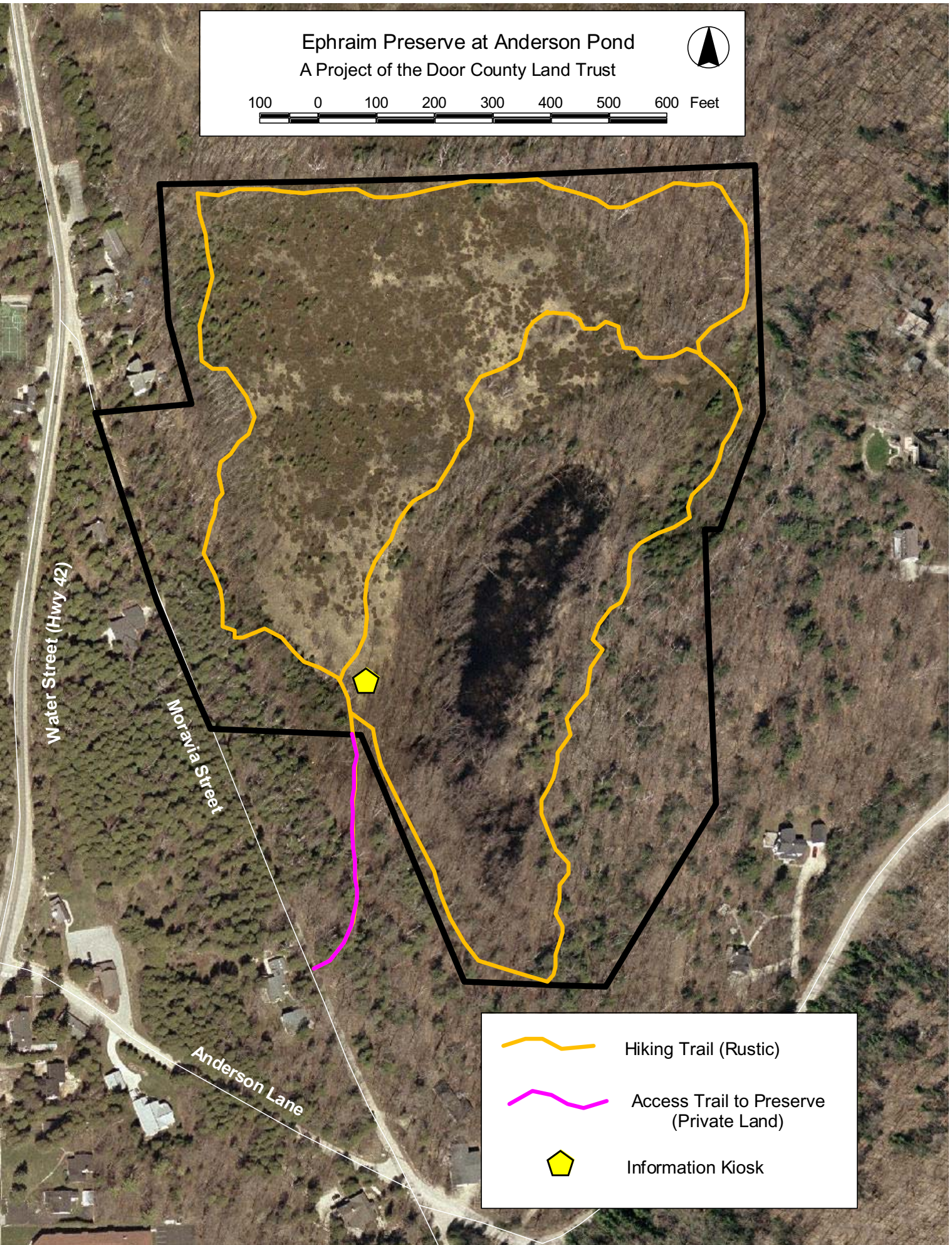





Ephraim Preserve at Anderson Pond
A Project of the Door County Land Trust



100 0 100 200 300 400 500 600 Feet



-  Hiking Trail (Rustic)
-  Access Trail to Preserve (Private Land)
-  Information Kiosk

Welcome to Door County Land Trust's Ephraim Preserve at Anderson Pond

Directions: The Ephraim Preserve at Anderson Pond is located in downtown Ephraim at the corner of Anderson Lane and Moravia Street. Parking is prohibited on Moravia and other public streets by Ephraim Village ordinance. Please park at established public parking areas on Highway 42 and walk to the preserve.

Preserve Guidelines

For the safety and enjoyment of our visitors as well as the health of our forests, meadows and wetlands, we ask that you please observe the following rules:

1. Please stay on the trails at all times. Pedestrians off-trail cause disturbance to vegetation and wildlife and may encounter poison ivy or other natural hazards. Also, portions of the trail are in close proximity to neighboring private lands.
2. Please use the boot brush station at the trailhead to clean your footwear before you begin your hike. By removing invasive plant seeds that cling to hikers' shoes, you can help us prevent the spread of invasive species which are one of the greatest threats to the native plant and animal communities on our preserves.
3. Dogs are welcome on the trails, but must be kept on a leash at all times.
4. Please take out everything you bring with you, including garbage.
5. For information on hunting rules and opportunities, please visit the Hunting Program section of our website at www.doorcountylantrust.org. Firearms are not allowed at the Ephraim Preserve at Anderson Pond and bow hunting requires a special permit from the village.
6. Remember to wear blaze orange or brightly colored clothing during open bow hunting seasons when visiting one of our preserves where we allow hunting. We do not recommend hiking on Land Trust Preserves during hunting seasons that involve firearms and visiting preserves during this time is at your own risk.
7. Please stay within the preserve boundaries and do not trespass on neighboring private lands.

Prohibited Activities

The following activities are not permitted on Door County Land Trust Preserves:

- Use of vehicles, including bicycles, ATVs, snowmobiles, and aircraft
- Camping
- Cooking or camp fires
- Caving or rock climbing
- Horseback riding
- Geocaching
- Pets off-leash
- Collection or disturbance of any natural material, alive or dead. This includes fruits, nuts, other edible plant parts, animals, fungi, rocks, minerals, fossils, archaeological artifacts, soil, downed wood, wildflowers and other plants, etc.
- Collection for scientific research requires permission from the Door County Land Trust and the WI Department of Natural Resources.
- Use of firearms or other weapons, except where allowed for permissible hunting activities as described on our Hunting Program webpage.

Thank you for respecting these rules as you enjoy visiting Door County Land Trust Preserves. We appreciate your help in keeping these special places a safe and serene environment for visitors and wildlife alike!



*Door County Land Trust * PO Box 65 * Sturgeon Bay, WI 54235*
*Phone: (920)746-1359 * Email: info@doorcountylantrust.org*