



Journal of the Door County Land Trust

LANDINGS

Save the Date!
Annual Gathering August 25

Spring 2023, Vol. 26, Issue 1 -
2022 Annual Report Enclosed



Rooting for the Future...thanks to you!

•A Burning Desire for Prairie Restoration

•A Tale of Two Shorelines •Now Streaming: Water Protection



We love to do silent sports all over Door County, and the Land Trust preserves are some of our favorite hiking spots! From Sturgeon Bay Ship Canal to Kangaroo Lake we love them all! My husband, Daniel, and our three children, Leo (6), Luna (4), and Lake (2), along with our puppy Leaf (1), find that being among the beautiful natural landscapes of Door County is what makes our family most happy! -Jillian Laurent

Trail Mix

Discover what the Land Trust means to those who enjoy our protected lands and waters. Send your images and comments to photos@DoorCountyLandTrust.org.



The Laurent children on Pebble Beach.

We have vacationed in Door County with our children since 1979. For the past 10 years, we have been bringing our grandchildren. During the pandemic, we began visiting less crowded places. We discovered the Door County Land Trust preserves. We have enjoyed our visits to the preserves, especially Little Lake and Kangaroo Lake Nature Preserves. -Michael Utzinger

I am so grateful for the Land Trust. My family has been coming up there for 30 years. I am so happy that land is being preserved. Pebble Beach has been one of our favorite spots. -Carol Behrens



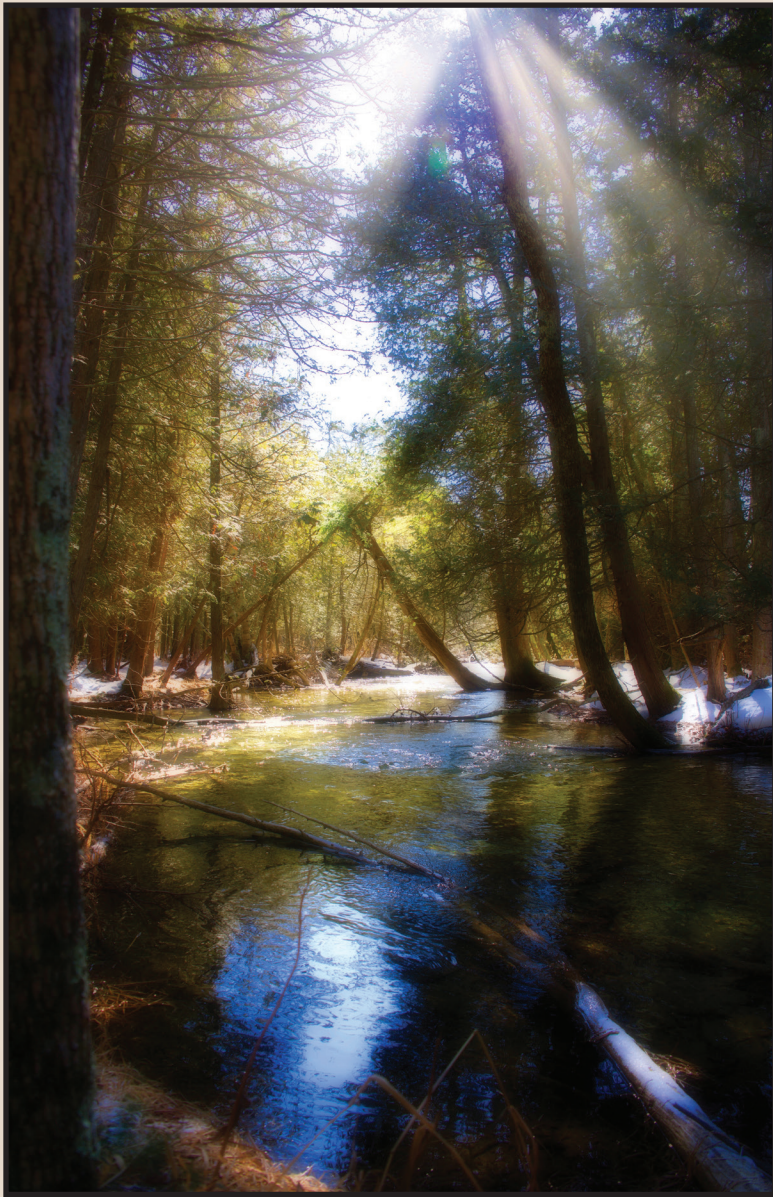
Photo by Julie Schartner

Juniper Joestgen



Heins Creek is our favorite preserve to explore. The hiking trail is the perfect distance for our toddler, Henry, and we love all the sights and sounds that the preserve has to offer. -Caitlin Joestgen





Site Seers

Since its beginning, the Door County Land Trust has depended upon the generosity and talents of landscape and wildlife photographers to help us tell our story.

The word photography is derived from the Greek words “photos,” meaning light, and “graphos,” meaning drawing, which when combined provide the full definition of “drawing with light”. We wanted to share the work of some of the newcomers to the Land Trust photo files who take the above description of their art to heart. Enjoy!

Clockwise from left: Heins Creek by John Fabina, Legacy Nature Preserve at Clay Banks by Susan Baus, Sunrise at Sturgeon Bay Ship Canal by Joanne Kurowski, and Three Springs Nature Preserve by Zoe Moreano.





Door County Land Trust

We are the
Door County
Land Trust



Jesse Koyen



Brian Forest



Drew Reinke



Terrie Cooper



Carrie
Ehrfurth



Tina Lee



Thomas
Stasiak



Paige Witek



Cinnamon
Rossman



Kay McKinley



Kristi Rice



Amy Dwyer



Emily Wood

Staff

Executive Director
Emily Wood

Land Program Director
Jesse Koyen

Land Protection Manager
Brian Forest

Conservation Easement Manager
Drew Reinke

Senior Land Protection Manager
Terrie Cooper

Land Protection Specialist
Carrie Ehrfurth

Ecological Restoration Specialist
Tina Lee

Land Stewardship Coordinator
Thomas Stasiak

Community Conservation
Coordinator
Paige Witek

Director of Charitable Giving
Cinnamon Rossman

Communications Coordinator
Kay McKinley

Administrative Director
Kristi Rice

Administrative Assistant
Amy Dwyer

Mailing: PO Box 65, Sturgeon Bay, WI 54235
Phone: (920)746-1359 • Fax: (920)746-1024
Email: info@DoorCountyLandTrust.org
www.DoorCountyLandTrust.org

Board of Directors

President
Donna Hake
President-Elect
Roy Thilly
Treasurer
Jeff Ottum
Secretary
Peter Deschler

Meredith Coulson-Kanter
Barbara Frank
Deb Hagman-Shannon
Mark Holey
Bob Ling
Mark Martin
Bryan Nelson
Anna Pepelnjak
Rick Scott

Past Board Members

Nancy Aten
Bob Barlament *
Jean Barrett
Tom Blackwood
Mike Brodd
Dan Burke
Fran Burton
Dave Callsen
Beth Coleman
Andy Coulson
Robert Cowles *
Sharon Donegan
Frank Failing *
Jack Finger
Cathy Fiorato
Robert Forsberg
Darlene Forsberg
Ken Gill
Betsy Guenzel *
Julie Guilette
Chan Harris *
Tony Haswell
Jon Hollingshead
Laurel Hauser
Jim Janning
John Jessup
Jim Ingwersen *
Jim Kinney
Lucy Klug
Lon Kopitzke
Terry Lappin

Jim Lester
Judy Lokken
Paul Mahlberg
Neil McCarty
John McMahon
Beverly Njaa *
Kevin Nordahl
Frank Pechman *
Judy Perkins
Nancy Rafal
Kate Rohrer
Gretchen Schmelzer
Carl Scholz
Neil Shadle
Oliver Skrivanie
Mary Standish
Tim Stone
Bill Tischler *
John Turner
Kieth Van Dyke
Rob Van Gemert
Rob Watson
John Wilson *
Kathy Wolff
Karen Yancey
Robert Yeoman
Bill Yunker *
Virginia Yunker *
Elizabeth Zimmerman
James Zimmerman *

* Founding Members

Make Your Legacy Nature's Forever Home



Planned giving through the Legacy Circle
protects the forever home of Door County's
living things—its vital lands and waters.

Please consider the Land Trust
in your estate plans.

Contact us at (920)746-1359 or email
giving@DoorCountyLandTrust.org



Rooting FOR THE Future

In celebration of Earth Day, Arbor Day, and the Door County Climate Change Coalition's Big Plant, thousands of native trees were planted across protected and private lands. These two- and three-year-old seedlings will take some nurturing and care before they put down roots.

Door County Land Trust's conservation work began in 1986 in much the same way as a seedling tree putting down roots. A passionate and dedicated group of volunteers tended to the needs of a growing Land Trust. Today, the Land Trust's roots are deep and far-reaching—thanks to the support of our community that cares so deeply.

As you read through this issue, aptly titled *Rooting for the Future*, I invite you to reflect on the ways that you helped the Land Trust thrive. With more than 9,000 acres of protected wilderness and strong relationships with conservation partners, landowners, members, volunteers, and the community, Door County Land Trust protects the peninsula's important land, water, and wild creatures. We achieved all these things because of your support, participation, and encouragement.

The land protection work and habitat restoration completed in 2022 is foundational to preserving the scenic beauty, undeveloped wild and open spaces, and the habitats where life thrives.

In this issue, you'll read stories about reinvigorating community programs that allow ample opportunities for you to engage with Land Trust staff, researchers, and conservation partners on protected lands. You'll learn of solid conservation



Tandem Photography/Madden Media

strategies to pursue new land protection projects that expand corridors, safeguard watersheds, and host thriving habitats for wild creatures. Discover new programs that expand scientific knowledge as we strive to improve stewardship and restoration efforts across the landscape.

The Door County Land Trust is primed to take bold and transformational steps to protect the landscape, watersheds, and ecology that make the Door Peninsula and its islands profoundly unique. Join us as we grow stronger rooting for the future together.

Thank you for your generous support and goodwill.

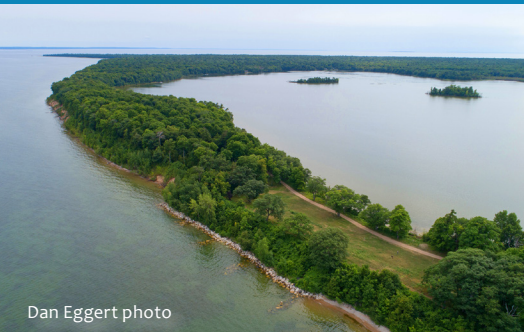
Yours in conservation,

A handwritten signature in blue ink, which appears to read "Emily".

Emily Wood,
Executive Director

2022 Land & Water Protection

FOR ALL LIVING THINGS



Dan Eggert photo

1. Chambers Island Nature Preserve

Through a generous outpouring of private donations from Chambers Island landowners, the Land Trust acquired an 18-acre isthmus located between the island's Lake Mackaysee and the bay of Green Bay. This addition to the Chambers Island Nature Preserve extends its land protection to 830 acres in total while

providing easy public access to the preserve. Formerly part of the grounds that hosted the Green Bay Catholic Diocese Holy Name Retreat Center, the preserve contains critical wildlife and fishery habitat. It is home to a multitude of plant, animal, bird, and insect species—some of which are classified as Endangered, Threatened, or of Special Concern. The project was partially funded by a Natural Resources Damage Assessment (NRDA) Grant, awarded by the Fox River Trustees Council.



- 1 Chambers Island Nature Preserve
- 2 Nell Conservation Easement, Sturgeon Bay
- 3 Nevins Land Donation, Egg Harbor



Patricia Nell (center) visits Conservation Easement Program Manager Drew Reinke (left) and Executive Director Emily Wood at the Land Trust office.

2. Nell Southern Door Conservation Easement

This past December, Patricia A. Nell donated 158-acres of her Sturgeon Bay property as a Door County Land Trust conservation easement. An important feature of the property is that it is within the zone of contribution for the Ahnapee watershed and surrounding wetlands. These areas slow down water runoff and filter sediments and nutrients before entering the river, adding to water quality protection in the area—forever. The Nell conservation easement is also abundant with wildlife, providing habitat for red fox, white-tailed deer, turkeys, and ruffed grouse, among others.

3. Nevins Egg Harbor Land Donation

Two parcels of shoreline property were donated to the Land Trust by Susan, Nancy, and Lori Nevins in memory of their conservationist parents, Pat and Gordy. The generous gift, which was adjacent to the sisters' girlhood home, is a vital parcel for conservation in Door County. The land is part of an important ecological corridor that provides landscape connectivity and movement of wildlife. It contains a coastal wetland community, wildlife habitat, bedrock beaches, surface and groundwater, a mix of mature northern hardwoods, and mesic (wet) cedar forests.



Left to right: Susan, Nancy, and Lori Nevins with their grandfather Harry on their Door County property around 1966.

Fischer Funds Expand Fen

A LOOK AHEAD IN 2023

John Fischer's desire to protect wild acreage that is reminiscent of where he spent happy summers in Door County as a boy has come to fruition. The funds the Fischer family donated to the Land Trust will make possible future land acquisitions at Kellner Fen.

This purchase will be augmented by grants. But, having the Fischer gift at the ready when the property became available makes grant funding more attractive to the organizations and government agencies that give in this way. The Fischer donation provided a high bar for matching funds through the Fischer Family Challenge, which raised more than \$450,000 in donations. These funds will be used for projects in Door County and its islands.

The new acquisition will be an important addition to the Kellner Fen Natural Area as it extends the groundwater protection around the fen. Kellner Fen is an unusually rare type of wetland. The fen features a large expanse of open water and an extensive, fragile sedge mat that floats on top of the underlying water. It is surrounded by dense forests. The fen provides habitat for rare and unusual species of wetland insects like the Federally Endangered Hine's emerald dragonfly. The fen is also home to a number of rare orchids and carnivorous plants including sundews and pitcher plants. Migratory waterfowl and Sandhill Cranes are common visitors and nest on the edges of the fen.

John feels his family's wish to honor their mother with their donation is complete. "I think that my mother, Anne, would be thrilled with the work the Door County Land Trust is doing for the Peninsula," he said. "The Fischer family is thrilled to be part of that mission and very thankful and appreciative of the work the Door County Land Trust staff and donors are doing."



Key McKinley photo

Top photo: Kellner Fen
Below: John and Xan Fischer

We thank the following partner organizations and agencies for their support of our current land acquisition and stewardship projects.

- Fox River & Green Bay Natural Resource Trustee Council
- Fund for Lake Michigan
- WI-DNR, *Knowles-Nelson Stewardship Program*
- National Fish and Wildlife Foundation, *Sustain Our Great Lakes*, in partnership with *Lake Michigan Bird Observatory*
- USFWS, *Great Lakes Restoration Initiative-Joint Venture Habitat Restoration and Protection*
- USFWS, *Great Lakes Restoration Initiative-Midwest Coastal*
- USFWS, *Partners for Fish and Wildlife Program*



Below the still surface of Door County's landscape, under and through the bedrock, water moves rapidly—a mixture of rainwater, snow melt, and dissolved particles collected from life above. In many areas, both nutrients and pollutants find their way quickly into the county's waterways—as well as Lake Michigan and Green Bay—at a rate that can overwhelm nature's filtration process.

According to Senior Land Protection Manager Terrie Cooper, natural water filtration on land in other places with adequate soil and deep-rooted plants takes hundreds of years rather than Door County's days, weeks, or months.

"The water immediately drains through the county's thin soils and bedrock into an underground cave system (karst) where there are tunnels and fractures in the bedrock that the water quickly passes through," Terrie says. "There's very little filtration taking place, out into the lake or down into the aquifer, where all our county's drinking water comes from."

Door County was once entirely forested with native trees and plants that slowed down runoff. Their root systems helped filter dissolved nutrients and minerals in ground water by pulling them up and using them for their growth. Today, our change in land use, and conversion from native forests to agriculture, residential development, and urban infrastructure compromises water filtration. As the population of Door County continues to grow, so does the threat to water quality. Municipalities have begun to address a major issue: leaking septic tanks. Required septic system inspections are helping, but this does not replace the urgent need for the protection of the forest and wetlands, and the restoration of existing buffers to supply clean water. Three ongoing project areas demonstrate the Land Trust's commitment to bolstering natural filtration.

Coffey Swamp Natural Area:

The recent donation to the Land Trust of a 10-acre white cedar forest in the Coffey Swamp State Natural Area on Washington Island is key to preserving water quality for Coffey Swamp and Lake Michigan. With



the donated forest ideally situated on the rim of the area's wetland basin, it provides a buffer from future residential development and its potential for sediment and nutrient runoff that could find its way through the wetland to Lake Michigan.

Another important aspect of the forest is that it expands the protection of the migratory bird habitat of Coffey Swamp, which is located on the northern edge of Washington Island and serves as a critical resting place for migrating birds within the Mississippi Flyway. The area is also home to several rare species associated with boreal-rich fens, as well as those more commonly found such as cotton-grass, bog-rosemary, Labrador-tea, and bogbean. Also present are carnivorous plants, including round-leaved sundew and pitcher plant.

Hibbards Creek Natural Area:

Of particular focus to the Land Trust is the Hibbards Creek watershed west of Kangaroo Lake. The protected Erskine Woods, Solitude, and Hibbards Creek Natural Areas lie within this corridor that

Water Protection

also facilitates the movement of wildlife across the peninsula. The watershed contains feeder streams, adjacent wetlands, and woodland buffers that follow Hibbards Creek on its way into Lake Michigan. Hibbards Creek is the longest creek in Door County north of Sturgeon Bay.



that feeds our water.” -Terrie Cooper



Three Springs Natural Area

“These are the veins, the lifeblood that feeds our water,” Terrie says. “You want to have these creeks and wetlands protected to filter what is coming off the land before it goes out into the lake. The corridor has pretty good water quality, but that is changing as more development takes place within the corridor and along the creek bed. We want to work with landowners and do what we can to protect the water quality while we still can.”

Terrie describes the headwaters of Hibbards Creek as “a big sponge, a filter that feeds the creek.” She notes that the spawning of native pike, and rainbow and brook trout indicate this creek has good water quality.

“There are a lot of native plants and aquatic insects that live in the water under the rocks that are the base of the food chain, and the fish and birds are eating them” Terrie adds. “Protecting these waterways supports wildlife habitat in Door County.”

DCLT currently protects several properties in the Hibbards Creek corridor and is actively exploring additional land protection opportunities.

Three Springs Natural Area:

The headwaters of Three Springs is another area that promotes clean water, while providing critical habitat for the Hine’s emerald dragonfly. The springs ultimately drain into North Bay in Lake

Michigan. Terrie says, “The quality of water in North Bay is critical to protect. Just offshore of North Bay is an area where historically 90% of Lake Michigan’s whitefish have spawned.”

Terrie also points out the economic impact of protecting Door County’s wetlands and waters. “Municipalities have to build sewage treatment plants, water filtration plants, and provide flood control—that



costs money,” she said. “But if we protect wetlands, and what’s happening on the ground, that’s a service the Land Trust and all other protected lands in the county are providing naturally.”

A Tale of Two Shores IN



Door County Land Trust photo

The Bogdanowicz land donation includes Lake Michigan shoreline.

Shoreline properties are always coveted for their value, but on the Door Peninsula and its islands, their ecological worth is priceless. The coastlines of Green Bay and Lake Michigan are within the Mississippi Flyway, one of four major bird migratory routes between North and South America. The protection of these shorelines directly affects the survival of songbird and waterfowl species as well as the future of water quality in Door County.

The Bogdanowicz family recently donated property with 150 feet of Lake Michigan shoreline to the Land Trust. Located in the town of Clay Banks, this land is directly to the south of the Land Trust's Legacy Nature Preserve at Clay Banks. The preserve's extended boundary expands its protection of amphibians, waterfowl, and shore birds.

The fact that the donated land is adjacent to a preserve named Legacy is fitting as the three lots that make up the donation were meant as a legacy gift to the three Bogdanowicz siblings—Kathryn, Luke, and Marta—from their maternal grandfather. In turn, the siblings wanted the wild

acreage to be a legacy for future generations that would visit the nature preserve.

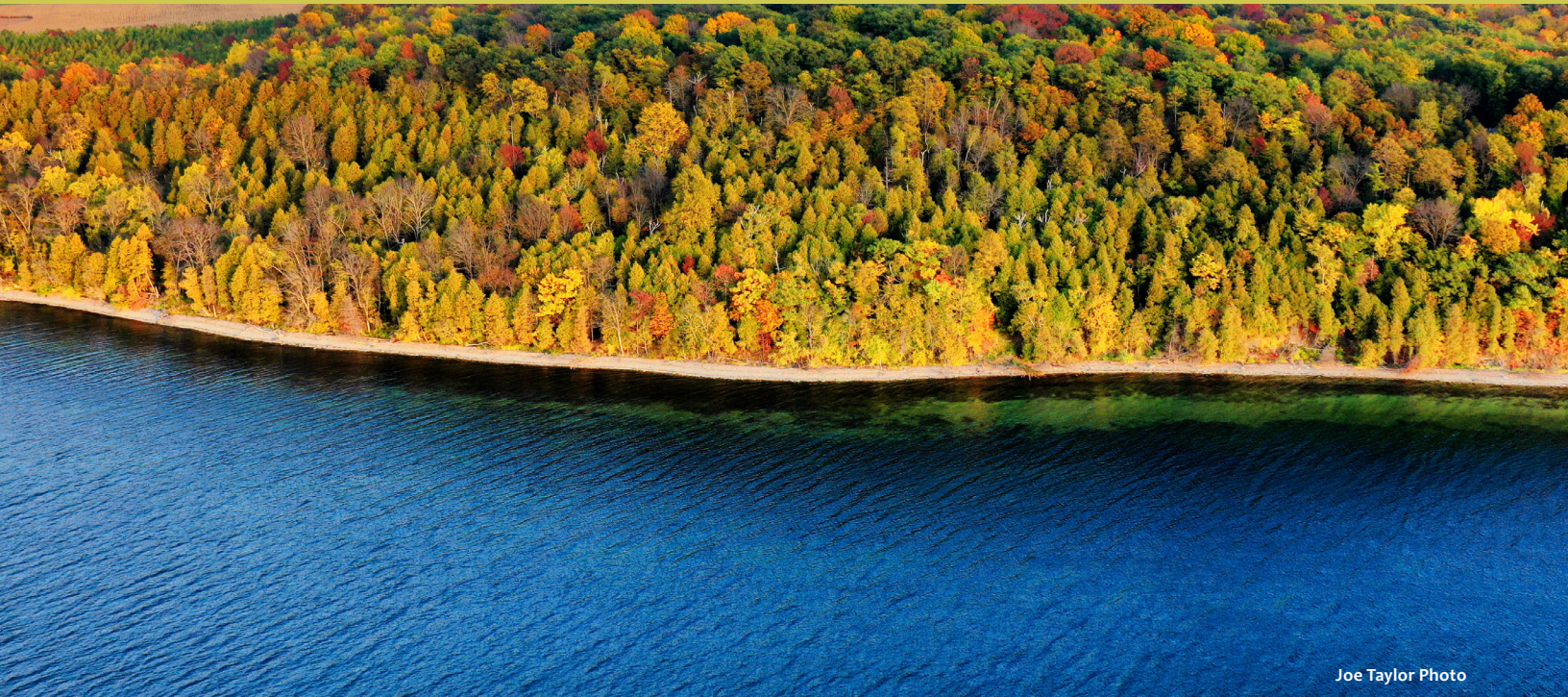
According to Marta, the land was purchased in 1980 and was never meant to be developed. "Its purpose was for camping," Marta said. "We grew up spending summers on the water. The land is completely untouched. The natural beauty is the same as it was then. We're happy to donate it to preserve it."

Marta describes an "idyllic childhood" spent along the shore. "When we were little, we'd look for wild strawberries and walk along the beach and skip rocks," she said. "We're all outdoorsy people—it's in our DNA."

Marta and her siblings agree that their time spent on the Lake Michigan shore in their youth influenced their appreciation of nature and the importance of protecting it as adults. "In some small way we want to leave the earth better than we found it," she said.

On the Green Bay side of the peninsula is a property with 1,700 feet of undeveloped shoreline that

Southern Door County



Joe Taylor Photo

An upcoming land purchase features 1,700 feet of Green Bay shoreline.

the Land Trust is in the process of purchasing. It is one of the largest remaining untouched lakeshore parcels in this area of Southern Door.

While the Bogdanowicz property has a low shoreline, the Green Bay parcel hosts Niagara Escarpment bluffs that rise 30-140 feet above the shore. Wrapped in dramatic natural beauty, the diverse ecology of the property outshines its aesthetics by providing an important asset to wildlife and water quality. Its location is also near a group of lands and conservation easements protected by the Land Trust, the Department of Natural Resources, and the County of Door.

Within the escarpment rock face are microclimates that are home to a number of Door County's ferns. Above the escarpment is a mature, northern mesic forest with a robust understory of trees and shrubs. A lower terrace has a healthy stand of white cedar. These features create a vital buffer to soil runoff and erosion. To the east of the forest, former agricultural lands are slated for restoration after acquisition. The Land

Land and Water Protection

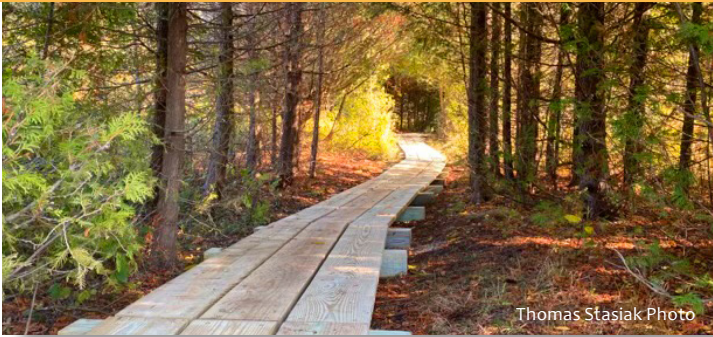
Trust's planned stewardship of the agricultural land includes planting trees and native plants that attract pollinators. This restoration will further boost runoff protection and water filtration in Southern Door.

According to Senior Land Protection Manager Terrie Cooper, the addition of these shore properties is pivotal for the Land Trust due to its focus on expanding land protection in Southern Door in years to come.

"We're very honored to work with families in Southern Door to further expand our protected lands and create new natural areas for wildlife and the community to enjoy," Terrie says. "Southern Door has sizable watersheds that feed into Green Bay and Lake Michigan that provide critical fish habitat and wildlife corridors across the peninsula. These areas are larger than those found further north, making them important investments in our future for water quality, which directly affects our quality of life."

Donations from members and the community will match grant funding and are vital to the completion of both projects.

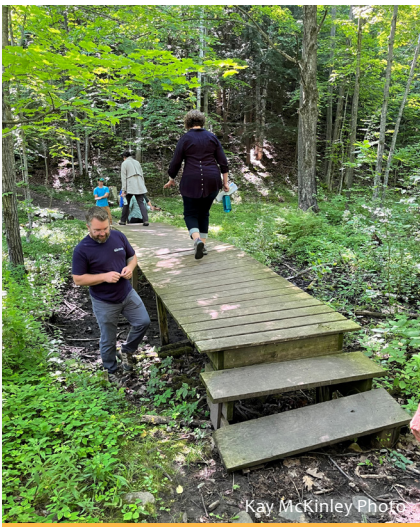
PROVIDING ACCESS WITH Respect FOR Nature



Thomas Stasiak Photo



Kay McKinley Photo



Kay McKinley Photo

A new trail bridge will be built at Bay Shore Blufflands.

The Door County Land Trust must strike a balance between visitor access and the vitality and safety of the species that call our nature preserves home. Increased enjoyment of the vista, protection of resources, and dry shoes were made possible with a new 80-foot-long boardwalk (above left) at Legacy Nature Preserve at Clay Banks. The trail will no longer be seasonally wet thanks to the work of Land Stewardship Coordinator Thomas Stasiak and volunteers Tim Wick and Pete Sherwood. The construction was funded in part by a Raibrook Grant.

Extensive improvements to the Three Springs Nature Preserve lookout deck (above right) were made possible by a generous donation in memory of Dr. Harold Deutsch by his widow, Regine, and daughter and son-in-law, Carolyn and Mike Friedl. Harold made many visits to the Land Trust preserves throughout his life, but this view at Three Springs is what he enjoyed in the final days of his life.

An engineering firm is completing final touches on their design recommendations to replace the trail bridge at Bay Shore Blufflands Nature Preserve. A new bridge will span ephemeral wetlands and withstand decades of foot traffic and weather in all seasons. DCLT is seeking contractor bids to build out the design beginning this fall. Email Land Program Director Jesse Koyen at jkoyen@DoorCountyLandTrust.org for details.

FINDING WAYS TO Protect New Life

The vintage 1872 barn at Three Springs Nature Preserve is the maternity roosting site for hundreds of little brown bats (*Myotis lucifugus*)—now listed as a federally endangered species. Reinforcing the barn's framing and installing a new roof will preserve the maternity roost for mother bats and their pups.

The Land Trust is currently seeking contractor bids, with plans to begin work in October after the bat migration. Please email Jesse Koyen at jkoyen@DoorCountyLandTrust.org for details.



Kay McKinley Photo

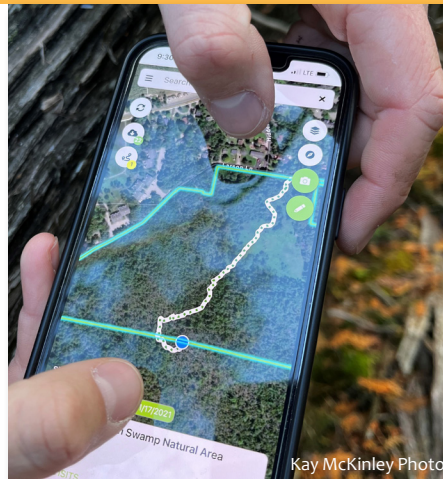
The maternity roost barn at Three Springs Nature Preserve.

Nature Taps INTO Technology

Land Trust stewardship staff members are now connected to land management software with a mobile app that puts the data of the Land Trust's more than 9,000 acres of protected land in the palm of their hands. The mobile app uses the capabilities of GPS but without the need for a cell signal.

According to Land Stewardship Coordinator Thomas Stasiak, because cell reception in the field can be problematic, using the new mobile app is a game-changer. "The GPS works without a cell signal to show property line boundaries and to track you off-line," he says. "It can update information in real time in the field and make a report. It provides an accurate snapshot of what's on our land."

With the new technology, staff and some specially trained volunteers can add to and look up information in the Land Trust's database, fill out annual monitoring reports, and take photos that



New technology creates efficiencies in fieldwork.

are automatically given a GPS-numbered location to pinpoint issues for attention. Another feature of the software is that a user can search a property by name, stewardship site, or aerial map.

Land Protection Specialist Carrie Ehrfurth uses a desktop version of the software to organize financial, legal, grant, and contract documents associated with each property. The software acts as a state-of-the-art project management tool. "This software should make it easier for our

team to communicate property issues with one another even though some of us are in the office and some of us are out in the field," she says. "In our work, we collect tons of data and records on the properties that we protect. This software will help us keep track of all that information and make it easier for us to use the data in our work. The software really speeds up the process of documentation that's necessary for land protection."

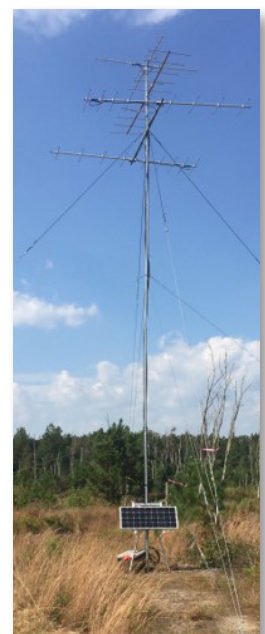
The Land Trust is now part of the international Motus Wildlife Tracking System. This network tracks migrating wildlife, particularly birds but also other small creatures like bats and insects. Tiny, lightweight transmitters placed on wildlife send signals to receivers placed along migration routes across the Western Hemisphere. The location for the Land Trust receiver is at the Domer-Neff Nature Preserve and Bird Sanctuary on Washington Island. The project is funded locally by a Sustain Our Great Lakes Grant coordinated and administered by the Lake Michigan Bird Observatory (formerly the Western Great Lakes Bat and Bird Observatory).

A community of researchers around the world maintains the Motus stations and reports data to the National Data Centre at Birds Canada where it is accessible to researchers and to the public. The data received helps identify an animal's location, time spent around a tracking beacon, migration speed

and distance, local population size, critical habitat and migration paths, and the impacts of local threats. This information may be viewed at www.motus.org.

"Standardizing a technology allows for global gathering and sharing of data," Land Program Director Jesse Koyen says, "When we're all using the same language and methods it's easier to understand and is a more powerful tool."

A chain of 17 receivers is planned for the shoreline of Lake Michigan and from Milwaukee to Madison. The Ridges Sanctuary and Crossroads at Big Creek are also participating in this project.



A Motus receiver

A Burning Desire



John Van den Brandt photo

Many species of birds will benefit from the Land Trust's prairie burns, including this American Kestrel.

The phrase “born of fire” takes on a literal meaning when describing prairie restoration. Used for centuries by indigenous peoples as a land management tool, today fire is being implemented as an environmentally sound method for land stewardship on a landscape where a native forest will take over. This year, the Land Trust is planning burns on our prairie plantings at Oak Road Nature Preserve and Legacy Nature Preserve at Clay Banks.

“Prairie habitat needs disturbance,” says Jesse Koyen, Land Program Director. “It’s a reset for tallgrass prairies that removes woody species and invasives that aren’t tolerant of fire. The fire also prepares the ground so native seeds can more easily germinate.”

The ground preparation that a burn provides recycles fertile nutrients such as potassium back to the soil. The native grassland species to be planted post burn are adapted to fire and have deeper roots than invasives such as spotted knapweed.

Installing a prairie happens in stages over months or even years. Spring mowing and burning are first, then herbicides are applied to manage specific summer weeds. The grassland seeds are then planted in late fall. According to Koyen, “Seeds of prairie plants need a period of time when conditions are really cold in order to germinate.”

Depending upon the result, the process may need to be repeated to successfully provide a home for grassland birds and pollinators. With Door County as a crucial stop for bird migration on the Mississippi Flyway, Koyen sees prairie restoration as a requirement for the peninsula’s biodiversity. “Everything in Door County would go to forest eventually without disturbance,” he said.

Burns for each of the two Land Trust preserves require a unique strategy for their restoration. All the burns are handled safely by professional contractors and timed to create the least disturbance for wildlife.

Oak Road Nature Preserve

The burn at Oak Road Nature Preserve, which staff and specialists conducted in April 2023, is the first in Land Trust history. It involved about 10 acres. At this location, a prairie is in place, but it contains some encroaching invasive plant species. Rather than purchasing more seed to supplement the burn site, the stewardship crew and volunteers will be hand-collecting seeds from native species previously planted on the preserve. The collection will occur in the late summer when the seeds are mature. The seed will be spread in late winter to avoid most of the rodents eating the seeds, but also give them enough time for cold stratification, which allows the seed to receive moisture from the snow to aid in germination.

for Prairie Restoration

Legacy Nature Preserve at Clay Banks

The first stage of this preserve's tallgrass prairie restoration on the upper bluff involves a burn of more than 17 acres, with an additional 11 acres to be restored within the next two to three years. Thirty-five species will be planted, including forbs (flowering plants) and grasses, along with a single shrub, Prairie Rose (*Rosa arkansana*). After the burn, Land Trust staff and volunteers will keep annual weeds at bay and prepare the site for a no-till seeding this fall.

In addition to the prairie planting, volunteers will plant native shrubs and trees on Legacy Nature Preserve's lower level this fall. The Land Trust has been preparing the area over the last two winter seasons with contractors and staff removing woody invasive species. To aid in the restoration of the site and provide competition for the woody invasives, these native shrubs will provide habitat for pollinators and migrating birds. This project is supported in part by the US Fish & Wildlife Partners program.



A controlled burn specialist lays down a fire drip at the recent burn at Oak Road Nature Preserve.



As a requirement for his Eagle Scout community service project, Dylan Zivalich-Schultz (center) took the lead on building 14 Bluebird boxes for the Land Trust with his Troop #1041 out of Green Bay. Dylan chose his project from a wish list provided by the Land Trust.

Stronger Together: Community Conservation



Photo by Thomas Stasiak

Amy enjoyed some good-natured hazing when her colleagues had her drag a memorial bench via sled during her introductory visit to the Gilson-Peterson Forest Natural Area.

Preserve Stewardship is Busman's

Amy Dwyer has worked as an administrative assistant for the Land Trust for over eight years, but the idea of volunteering as a preserve steward didn't occur to her until after taking the Wisconsin Master Naturalist class in 2022.

The master class requires a certain number of volunteer hours for a participant to remain certified. Amy reached out to Land Stewardship Coordinator Thomas Stasiak to discover opportunities. When she learned of the volunteer preserve steward position at the Gilson-Peterson Forest Natural Area near her Ellison Bay home, she'd found her match.

"It motivated me and renewed my interest in nature," she says. "I'm interested in learning about invasive species and what it takes to manage a property."

Walking the preserve or natural area with a stewardship team member to familiarize the volunteer with the area is part of the training. In Amy's case, her trail is a 1.75 mile loop.

Eagle Scout's Project is for the (Blue)birds

Thanks to Dylan Zivalich-Schultz's Eagle Scout project, 14 new Bluebird boxes are ready to install at Land Trust nature preserves—doubling the number of nature preserves where the Land Trust manages Bluebird nest boxes. For the first time, boxes will be installed at Three Springs, Lautenbach Woods, and Kangaroo Lake Nature Preserves.

According to Ecological Restoration Specialist Tina Lee, Dylan's donation of the boxes comes at an ideal time. "Bluebird populations are declining across the United States, so we want to support them," she says. "The success of Bluebird families is also an indicator of how well the environment is doing overall."

With the addition of the bluebird boxes, volunteers have stepped up to monitor them. Mark Glasser will check in on the birds at Kangaroo Lake, Jan Wrede at Lautenbach Woods, and Julie Roegnik at Three Springs. If interested in monitoring Bluebird or other avian species, please email Community Conservation Coordinator Paige Witek at pwitek@DoorCountyLandTrust.org.



Winter birds received nourishment from Gibraltar Girl Scouts when they created birdseed cakes from Land Trust kits.

Holiday for Land Trust Staffer

"You're the eyes and ears for the Land Trust," Amy says. "You notify the Land Trust of things like downed trees, invasive species, tree stands—any infringement of the rules for public use. You don't have to feel responsible, the Land Trust takes care of any issues that you would report."

Amy shares her assignment with Mary O'Grady, the current steward. There is no limitation on the number of stewards for an area. And volunteers can choose the land they want to represent. Standardized forms are made available to the stewards to record what they've witnessed on each visit.

Amy describes other benefits to being a preserve steward. "It's feeling a sense of intimacy and ownership over a particular property—really getting to know it," she says. "I feel good doing my part."

For more information on volunteering as a preserve steward, please contact Community Conservation Coordinator Paige Witek at pwitek@DoorCountyLandTrust.org.



Girl Scout Troop 4356 built six Wood Duck boxes and six Kestrel boxes this fall. On a single day in November 2022 the scouts installed some boxes at Kangaroo Lake and Lautenbach Woods Nature Preserves. The remaining boxes will be installed at other preserves at a later date.

Digging Deeper INTO New Activities



Volunteer Mike Fordney helps to blaze a trail at Oak Road Nature Preserve during a recent stewardship workday.

The Door County Land Trust is expanding its roster of activities so you might dig a little deeper into your involvement. Join others as you increase your knowledge of the natural world and play a part in research with citizen science projects. Enjoy an immediate sense of satisfaction when working on two-hour tasks during stewardship workdays—now scheduled for the third Tuesday of each month through October. You can also take part in guided hikes at Land Trust preserves, including new offerings that will teach you how to use mobile phone apps like Seek and Merlin to identify plants and bird calls—and enhance your experience in nature.

The Land Trust's commitment to increase the number of offerings for the community is

evident by the addition of a new staff member to oversee and create conservation events. Paige Witek was hired in January 2023 as a full-time community conservation coordinator. According to Executive Director Emily Wood, this position was on her to-do list when she joined the Land Trust in September 2022.

"The vitality of this or any other land trust is dependent on community input," Emily says. "Our aim is to provide a robust calendar for volunteers, learners, and appreciators of nature. It's important to bring people in to understand our mission while helping us attain it."

Since her hire, Paige is maintaining partnerships with other environmental organizations, one of which is the Chicago Botanic Garden (CBG). Through her volunteer coordination, participants will add to the CBG data base by monitoring pollinators of rare dune plants at the Sturgeon Bay Ship Canal Nature Preserve. Among the volunteers she is seeking are landowners that live near the preserve to help the Land Trust learn more about pollinator habitat.

"Citizen science projects are a great way for people to intimately connect to what's happening in the natural world," Paige says. "There is something special that happens when you take the time to notice the tiniest details, like what pollinators are landing on a flower."

To register and view any event updates online, visit www.DoorCountyLandTrust.org/events.



Save the Date!
Annual Gathering
August 25, 2-5 pm
Belgian Heritage Center

• live music • food • fine art • camaraderie

Tickets available online at DoorCountyLandTrust.org/gathering

Events

• Stewardship Workdays • Hikes
• Special Events • Citizen Science



Please register for ALL events online at www.DoorCountyLandTrust.org/events.

May 18th 8 am – 12 pm

Birding Outing at Lautenbach Woods & Kangaroo Lake with Daniel Edelstein
\$10, Open to the public

May 26th – 28th Varying times

Festival of Nature – DCLT led hikes
Various Nature Preserve locations

June 1st 1-3 pm

Learning to Read the Landscape Walk
with Lucy Klug
Kangaroo Lake Nature Preserve
Free, Open to all with registration

June 3rd 9-11 am

Learning to Read the Landscape Walk
with Lucy Klug
Kangaroo Lake Nature Preserve
Free, Open to all with registration

June 8th 1-3 pm

Peatland Bryophytes (Yes, Mosses!) of
Door County Walk with Keir Wefferling
\$10, Members Only

June 10th 2-4 pm

Peatland Bryophytes of Door County
Walk with Keir Wefferling
\$10, Members Only

June 20th 9 – 11am

Stewardship Workday –
Project Budburst
Sturgeon Bay Ship Canal
Nature Preserve

June 22nd 1-3 pm

Tapping Into Your Senses Walk
with Gretchen Schmelzer
Legacy Nature Preserve at
Clay Banks
Free, Open to all with
registration

June 24th 9 -11 am

Discovery Hike at Oak Road Nature
Preserve with Jan Wrede
Free, Open to all with registration

July 6th 1-3 pm

Discovery Hike at Solitude
with Sandy Miller
Solitude Natural Area
Free, Members Only

July 8th 9 - 11 am

Discovery Hike at Ephraim Preserve
at Anderson Pond with Sandy Miller
Free, Open to all with registration

July 18th 9 – 11 am

Stewardship Workday
Ephraim Nature Preserve at
Anderson Pond

July 20th 1-3 pm

Fascinating Flora: Adaptations of Plants
Walk with Jane Whitney
Oak Road Nature Preserve
Free, Open to all with registration

August 3rd 9 – 11 am

Guided Hike: Using Seek App to Engage
in Nature with Barb Ottum &
Paige Witek
Heins Creek Nature Preserve
Free, Open to all with registration

August 5th 9 – 11 am

Guided Hike: Using Merlin Bird ID App
to Engage in Nature with Barb Ottum
& Paige Witek
Heins Creek Nature Preserve
Free, Open to all with registration

August 15th 9 – 11 am

Stewardship Workday
Oak Road Nature Preserve

August 25th 2-5 pm

Annual Gathering
Belgian Heritage Center, Brussels
Open to all; Ticket details online at
DoorCountyLandTrust.org/gathering

August 31st 1-3 pm

Tapping Into Your Senses Walk
with Gretchen Schmelzer
Lautenbach Woods Nature Preserve
Free, Open to all with registration

Sept. 19th 9 -11 am

Stewardship Workday
Washington Island

Sept. 21st 1-3 pm

The Fungus Amongst Us: Fall Fungi and
Mushrooms Hike with Charlotte Lukes
Lautenbach Woods Nature Preserve
\$10, Members Only

Oct. 10th 1 – 3pm

Learning in Retirement Discovery Hike
with Terrie Cooper & Paige Witek
Kangaroo Lake Nature Preserve
Free, Learning in Retirement
members

Oct. 14th 9 – 11 am

Fall for Autumn Foliage Walk
with Jane Whitney
Kangaroo Lake Nature Preserve
Free, Open to all with registration

Oct. 17th 9- 11 am

Stewardship Workday
Legacy Nature Preserve at
Clay Banks

Artist Inspired to Give Back



Dan Collins with his painting of Three Springs Nature Preserve.

The landscape of Door County has been instrumental in many areas of Dan Collins' life—in courting his wife, as artistic inspiration, and now his support of the work of the Door County Land Trust.

"I brought my wife up here when we were dating and she decided to fall in love with me," Dan said. "We've been charmed by the rural environment of the peninsula for 40 years."

Dan and his wife, Maureen, moved to Ellison Bay full-time in 2021 from Crystal Lake, Illinois.

An avid cyclist, he brings his camera with him on his bike to capture reference photos along the back roads of Door County. But a chance invitation to visit Three Springs Nature Preserve

brought a new focus to his acrylic paintings: a series inspired by the Door County Land Trust nature preserves. Along with it, there was a desire to give back. Dan is donating 100% of the funds received for his Three Springs painting to the Land Trust. The painting is on view at Skip Stone Coffee in Sister Bay.

"It made sense when I found out how beautiful these properties are," he says. "I thought it would be nice to make a donation because the Land Trust provides the inspiration for landscapes to paint."

Even before the painting went on display, it had an impact. "I was showing the painting to some friends and they didn't know the preserves were open to the public," Dan says. "The preserve paintings are not only a communication tool to expand my artwork, but also to expand knowledge of the Land Trust. Maureen and I want to contribute to the longevity of the open spaces of Door County."

Martins Inducted INTO Conservation

Congratulations to Door County Land Trust Board Member Mark Martin and his wife, Susan Foote-Martin, for their induction into the Wisconsin Conservation Hall of Fame. Their careers with the Department of Natural Resources and their active volunteerism in retirement have helped to protect thousands of acres of vital habitat throughout Door County. Their accomplishments set a high bar for conservationists.

While with the DNR, Susan worked at MacKenzie Environmental Education and the Bureau of Endangered Resources, where she created the Great Wisconsin Birding and Nature Trail. She also created the Bird City Wisconsin program, which to date has helped almost 100 communities establish protocols for being more bird-friendly. Susan also established The Ridges Sanctuary Festival of Nature.

Mark worked out of the DNR's central office to establish State Natural Areas. Big Marsh and Little Lake on Washington Island and Three Springs are among the many sites that he helped to secure funding for in Door County. Mark also serves on the board of The Ridges Sanctuary and helped The Nature Conservancy protect Baileys Harbor Boreal Forest and Wetlands Preserve.

Welcome, Brian AND Paige!

Two new staff members joined the Land Trust team in January



Brian Forest

Brian Forest, Land Protection Manager

Brian brings over 20 years of conservation experience, including work with Door County Soil and Water Conservation Department and The Ridges Sanctuary. He grew up in Institute, just north of Sturgeon Bay. Brian attended UW–Green Bay where many of his studies and research focused on the natural resources of Door County. He earned a Bachelor of Science in Earth Science, with an emphasis in geology and a minor in environmental science. After college, Brian spent time with The Nature Conservancy, as well as working for the Oconto County Land Conservation Department. When not consumed by the activities of his busy kids Gavin and Gillian, Brian enjoys working on house and yard projects, hiking, kayaking, reading, playing the guitar, or relaxing around a campfire.



Paige Witek

Paige Witek, Community Conservation Coordinator

As the community conservation coordinator, Paige engages the Door County community in natural resources stewardship, environmental education, and ecological research. Paige grew up on the west side of Green Bay, where she loved the outdoors and was fascinated by all its creatures. She graduated from UW–Madison with a Bachelor of Science in zoology and a certificate in environmental studies. After a variety of professional and personal experiences in the field, she developed a strong passion for environmental education. Before joining the Land Trust, Paige spent five years in Missouri working as an education and outreach coordinator, developing many meaningful community programs and partnerships. In her free time, you'll find her birdwatching alongside her partner, Erik, peering through binoculars to enjoy any bird that flies their way.

Hall of Fame

After many years of service, the Martins continue to take their work home with them. Since 1979, they've resided and acted as stewards at Goose Pond, an Audubon Society nature sanctuary in Columbia County, where they restored and continue to manage mesic prairie.

"Mark and Sue's contribution to conservation in Door County and throughout Wisconsin is exemplary," says Terrie Cooper, senior land protection manager. "Not only have they secured millions in state and federal grants for land protection, but their unwavering passion for conservation and education continues to inspire those who care about the sustainability of our planet."



Arlene Koziol photo

Mark Martin and Susan Foote-Martin

A Forever Tribute



Preserving life and protecting land with a legacy that lives forever

Our earth will be here long after we are gone, but in what condition? Establishing land protection through conservation is a legacy that future generations will be thankful for. You can help.

Whether to protect a shoreline that is open to all or a hemlock forest that offers shade to protect endangered species, the Door County Land Trust exists to make sure that our wild, beautiful land can remain that way forever.

Making a charitable donation that helps the natural lands on our peninsula live on forever is easier than you might imagine.

Door County Land Trust has set in place an organizational foundation for perpetuity.

If you have not already named the Door County Land Trust in your estate plan, the best time to begin planning your legacy is today.

The simplest way is to name the Door County Land Trust as one of the beneficiaries of your retirement accounts or your life insurance.

Planning a bequest in your will or trust can be as easy as asking your attorney to include a provision for the Door County Land Trust.

Ask us how. No matter the size of your gift, we can help you create a legacy that lasts forever. Contact Director of Charitable Giving Cinnamon Rossman at (920) 746-1359 or giving@doorcountylandtrust.org.

Lasting Stewardship

Door County Land Trust is accredited by the Land Trust Accreditation Commission. The seal of accreditation confirms Door County Land Trust operations meet and exceed the national Land Trust Alliance Accreditation Commission's standards of sound finances, ethical conduct, responsible governance, and lasting stewardship.

The Door County Land Trust thanks the following benefactors who have indicated that the Land Trust has been included in their estate plans.

Abbott, Ann	Kress, Billie
Anderson, Bob and Dorothy	Laatsch, Bill and Hunter, Fran
Anderson, Robert C	Larson, Richard and Roberta
Anonymous (8)	Leavitt, Mitch and Jean
Aufrere-Sebetic, Jacqueline L	Lester, Jim and Barbee
Aulabaugh, Norman and Carol	Licata, Tony and Judy
Baer, Charles and Stephanie	Lisle, Tom and Bev
Barlament, Steve and Riley, Carolyn	Luker, Donald R
Barrett, Jean and Nevalainen, David	Lukes, Charlotte
Batchos, Thomas and Patricia	Madden, Michael and Barbara
Beadell, Priscilla and Anthony	Mendius, Barbara
Bell, Hugh and Joyce	Meyer, Gertrud
Blankenburg, Ralph and Kathy	Miller, Ed and Sandy
Blanton, James and Barbara	Miller, Kenneth and Glenda
Burkhardt, Richard and Dorothy	Millicent S Ficken
Burton, Paul and Fran	Moline, Ronald and Barbara
Bussard, Ken	Morris, Greg and Terry
Cady, Bonnie	Nowak, Peter and Jean Ann
CaJacob, Claire and DuMont, Debra	Olsen, Lawrence and Lynn
Callsen, Dave and Vonnice	Ottum, Jeff and Barb
Carpenter, John and Julie	Perry, Kerry
Cermak, Ardis	Propsom, Rich and Bruesch, Jane
Coleman, Beth and Wessel, Curt	Queenen, Allen and Karen
Collins, Dan and Aten, Nancy	Schultz, Craig and Sandy
Conroy, Peter and Beverly Ann	Schwengel, Jim and Judy
Cooper, Terrie	Seagard, Tom and Kozma, Brigitte
Cosgrove, Michael and Julia	Seville, Joseph
D'Abbraccio, Deanna and Morgan, Barbara	Sherman, Jerry and Lipp, Carolyn
Davis, Rob	Silberman, Ann Monteith
Deschler, Peter and Gina	Singleton, Dawn and Church, Steve
Diekman, Marianne	Standish, Michael and Mary
Dimberg, Lyn	Steffens, Jayne and Cross, Jerry
Donegan, Sharon	Swanson, John and Deanna
Ellis, James and Karen	Traven, Lee
Friedl, Mike and Carolyn	Turner, John and Judy
Fundingsland, Donald W	Turrieff, Tom
Gerrits, Lloyd R and Dorothy J	Van Den Brandt, John and Jean
Goldberg, Nancy	Vanden Houten, Dale and Scott, Richard
Hake, Donna	Vervoren, Thora
Hansotia, Marilyn	Walwark, James and Polly
Harrington, Richard and Mary	Warner, Rose
Herndon, Richard and Carol	Watson, Rob and Picken, Judy
Heveran, Edward and Janet	Wick, Tim and Cindy
Holm, Barbara	Wilson, John and Karen
Howe, Eric and Wegner, Kristin	Wissink, Steve and Janet
Jacobson, Rod and Jean	Wittenkeller, Al
Klepp, Dottie	Yancey, John and Karen
Klug, Karl and Lucy	Yeast, Gary and Barbara
Knox, Robert W and Schlott, Kathryn E	Yeomans, Robert and Charlotte
Kokes, Dan and Jeannie	Youell, Sylvia
Koutnik, Dr. Ed and Cindy	Zehr, Alison

Have you included the Land Trust in your planned giving? If so, please inform us of your intent so we may thank you and include you in our Legacy Circle listing.

Vonnie & Dave Callsen: A Legacy Written IN THE Stars



Vonnie and Dave Callsen at their Ellison Bay home.

A love for the outdoors guided Vonnie and Dave Callsen to put down stakes permanently in Ellison Bay over 35 years ago. But for Dave, the urge to surround himself with nature has been a lifelong pursuit, beginning as a boy living in Madison.

“I grew up with friends who liked to go out in the country,” he says. “When we were in grade school we’d camp out all by ourselves. No tents, we’d just lay down on blankets and sleep on the side of a hill.” Vonnie adds, “Under the stars.”

After their marriage and a move to the Chicago suburbs for Dave’s management position at AT&T, the pull to live in Door County made itself known during family camping trips when their three children were young. “Our favorite place to camp was on the peninsula,” Vonnie said. “It was then we pretty much decided we would move up here.”

The couple built the family-run grocery, Main Street Market, in Egg Harbor in 1987. They value their home’s rural setting on 25 acres as an antidote to the busy store.

“I like it here because of the wildlife and it’s peaceful,” Dave said. “The night skies are gorgeous here. You have a clear night in the winter or the summer, it doesn’t matter, it’s just great.”

The couple’s understanding of the value of wild places has grown from living in Door County and from their involvement with the Door County Land Trust. Dave served on the board for a number of years, holding many offices including Board

President. “It was fascinating when I got on the board because I learned so much more,” Dave says.

A lifestyle that includes the benefits of nature is something the Callsens have promoted with their children, grandchildren, and now great-grandchildren, many of whom live on the peninsula. It is also something they feel is important to protect for future generations overall. Vonnie and Dave have shown their commitment by becoming members of the Land Trust’s Legacy Circle, a planned giving program.

“If you’re going to leave something for those you leave behind, we always felt that what we do should be something that would be lasting,” Dave said. “If you want to leave a truly lasting presence, the Legacy Circle is a great place to do it because it’s forever. Once you get involved with it, whatever properties you’re talking about... it goes on generation after generation.”

“And we want the family to feel about land and preservation like we do,” Vonnie said. “We want them to be aware and interested.”

When asked if the message has taken hold, Vonnie relays this anecdote while laughing: “Dave took a hike with our granddaughter Regan, who was eight at the time. When they came back I asked her if she saw anything and she said, ‘I saw a lot of invasive species.’ They definitely appreciate nature.”

DOOR COUNTY LAND TRUST 2022 By THE Numbers

2023 YEAR TO DATE

9,050 acres
protected today

500+ acres
of land protection in the pipeline

270 days
to understand Land Trust lingo,
including acronyms

Countless times
that staff poorly imitated bird calls

7 islands
with protected lands

8 conservation
easement
projects explored

6 Egrets sighted
at Kangaroo Lake on Earth Day

672 group text
messages
among staff announcing wildlife
sightings in the field

13 staff
members to make it all happen!

2022 Financial Report

As a community service 501(c)(3) organization, the Door County Land Trust depends on the generosity and contributions from members and supporters to finance our conservation work. 2022 audited financial statements and our Federal Form 990 will be available by request.

Net assets as of December 31, 2022 (pending audit)

Stewardship Endowment Fund ¹	\$	4,142,845
Land Acquisition Fund ²	\$	711,810
Legal Defense Fund ³	\$	260,461
Cash restricted for current land acquisition projects	\$	486,267
Working capital and operating reserve	\$	1,336,199
Investment in property and equipment	\$	498,150

Net assets excluding land	\$	7,435,732
----------------------------------	-----------	------------------

Value (at time of purchase) of land held for conservation	\$	29,574,460
---	----	------------

TOTAL NET ASSETS	\$	37,010,192
-------------------------	-----------	-------------------

Change in net assets versus 2021	\$	735,104
----------------------------------	----	---------

^{1 2 3} The Stewardship Endowment Fund, Land Acquisition Fund, and the Legal Defense Fund consist of donor contributions restricted by the donor, or designated by the Board of Directors.

¹ The Stewardship Endowment Fund provides annual revenue to the Land Trust to care for its lands, while at the same time growing to provide sustained funding to fulfill the obligation of caring for the lands long into the future.

² The Land Acquisition Fund provides a ready source of dollars to respond quickly to opportunities to purchase and protect properties of high ecological and scenic value. The fund supports the acquisition of lands at times when grant funding is not available or grant funding is delayed.

³ The Legal Defense Fund provides funding as needed for use in defending and enforcing Land Trust conservation easement agreements and in resolving encroachments or vandalism issues that may arise on protected properties.

Stewardship Endowment Fund Trustees

The Endowment is managed by Legacy Private Trust Company and is governed by the following Board of Trustees:

Lana Billeaud	Peter Deschler	Bill Schaars
Jim Black	Bob Ling	

Donations Mean THE World to Us!

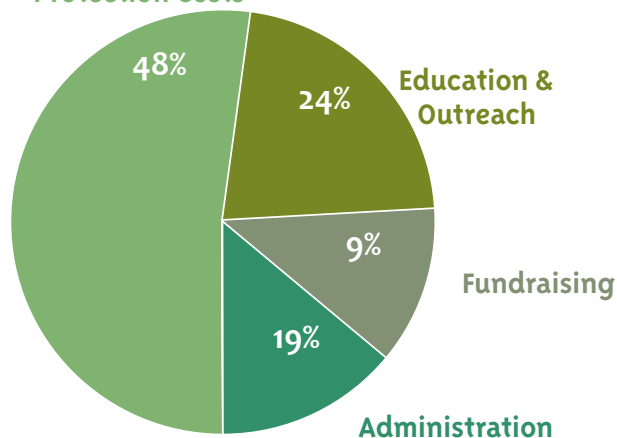
Member contributions helped fund more than 80% of land acquisitions in 2022!

2022 Annual Operating Revenue and Expenses

Thank
You!

Uses of Funds

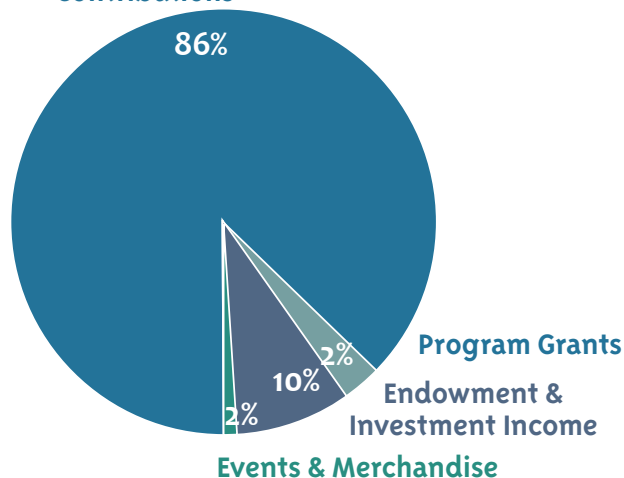
Land Stewardship & Protection Costs



The Door County Land Trust spent \$1,403,225 on the activities listed above.

Sources of Funds

Donor & Member Contributions



The Door County Land Trust raised \$1,559,098 from the sources listed above.

Door County Land Trust's annual operating budget includes the programs, supplies, and administrative costs to carry out the mission to protect and care for our protected lands.

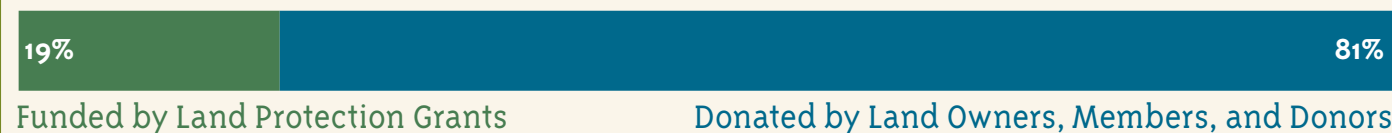
Door County Land Trust maintains an operating reserve fund designed to sustain core operations and uphold our commitment to land protection for perpetuity. \$155,873 was invested in the Stewardship Endowment Fund, Legal Defense Fund, and operating reserve fund to cover future

conservation obligations and ongoing growth of the organization.

From funding simple things like light bulbs to carrying out landscape-wide land restoration, the largest portion of our annual revenue comes from donor and member contributions. More than 2,485 households and individuals contributed to the mission to protect and care for Door County's exceptional lands and waters in 2022. **Thank you!**

2022 Land Acquisitions (Purchases and Donations)

Sources of funds for owned land acquisitions completed in 2022 *



As you might imagine, land conservation can be a very expensive endeavor. Three separate sources help Door County Land Trust establish new nature preserves or expand existing preserves. In some years, the largest source of funds for Door County Land Trust's acquisitions are obtained through grants that we apply for and secure from state, federal, and other agencies. In other years the largest source of funds is donor and

member contributions. Finally, in some years the value of donated land is greater than grants or contributions. During 2022, the Land Trust received two land donations from generous property owners.

**The cost of land acquisitions is based on purchase price or estimated fair market value, and does not include associated costs like surveys and title work. These expenses are funded with membership donations and program grants.*

Tributes, Memorials, AND Bequests

GIFTS RECEIVED BETWEEN 1/1/2022 AND 3/16/2023

Tributes

In Honor of Henry and Irene Anderson
Anderson, Henry and Levine, Shirley

In Honor of Laura Bartolo and Ron Corthell on Their Birthdays
Kobasa and Mancoff, Paul and Debra

In Honor of Corey Bogenschutz
Kiehnau, Dan and Pat

In Honor of John Bowman's Birthday
Bowman, John and Kay

In Honor of Jane Burress
Burress, Peter

In Honor of Terrie Cooper
Skewes, Russell and Winnett, Tedi

In Honor of Curtstock
Allweiss, Allan and Corbett, Emily

In Honor of Kevin and Carol DeVault
Pfarr, David and Sarah

In Honor of Steven Ehrmann
Hunt, Jeffrey and Christine

In Honor of Claranne English
English, Katharine

In Honor of Georgette Farley
Ewaskowitz, Jeff

In Honor of Beth and Michael Fiore
Enc, Defne and Lujan, Alonso

In Honor of Rosa Flanagan and Nick Chambers
Varone, Vince

In Honor of Alex Franceschi
Franceschi, Paul

In Honor of Cissie F Franklin
Beach, Anne

In Honor of A Friend
Besser, John

In Honor of Jim Gasper
Slater, Chris

In Honor of Van and Hildy Gathany
Andrews, Kristen

In Honor of Julie Gianni
Van Gemert, Rob

In Honor of Dan Guinn
Guinn, Shawna

In Honor of Peter Haase
Brost, Tricia

In Honor of Linda Halfmann
Frank, Sharon

In Honor of Marilyn Hansotia
Cady, Bonnie

In Honor of David Hartwell
Geoffrion, Tim and Jill

In Honor of David Haus
Haus, Joel and Le Corvaisier, Eleonore

In Honor of Laurel Hauser
Duffin, Jacinda

In Honor of Giz and Linda Herbst
Herbst, Alicia

In Honor of Jack and Emma
Davis, Bridget

In Honor of Dennis Kaldor
Dew, John and Jill
The Harding Group, LLC

In Honor of Maxx Kanzler
Mack, Laurie

In Honor of Kathi with the Cool Boots
Pickart, Therese

In Honor of Kathy Sedan's Birthday
Freeman, George and Bernie
Gomoll, Steve and Mary

In Honor of Cathy Kennedy
Coulehan, Amy

In Honor of John Koehn
Koehn, Christina and Rusch, Randy

In Honor of Don and Brigid Krutek
Krutek, Paul and Fran

In Honor of Chris Larsen
Larsen, Chris and Connie

In Honor of Don Larson's Birthday
Trobec, Terry

In Honor of Estella and Chuck Lauter
Bremer, Sid and Rodesch, Jerry

In Honor of Elaine Marshall
Collings, Leslie

In Honor of Lee Meyer
Meyer, Lee and Markie

In Honor of Laura Mol
Wilpers, Michael

In Honor of the Morris Families
Fields, Chuck and Carolyn

In Honor of Rick Murray
Murray, Leslie

In Honor of Aaron Myers and His Colleagues
Place, Sandra

In Honor of Justin Nauman
McDonough, Emilie

In Honor of Dick and Judy Neiman
Wilcox, Jock and Karen

In Honor of Michael Nelson
Nelson, Shafer

In Honor of David Neuman and Miranda Smith
Barrett, Jean and Neuman, Paul

In Honor of Mike and Beth Neuman
Barrett, Jean and Neuman, Paul

In Honor of Pat and Stacey Neuman
Barrett, Jean and Neuman, Paul

In Honor of Barb and Jeff Ottum
Cushman, Betsy and Preston, Barb

In Honor of Ralph and Mary Paul
Mulvey, Gary and Carla

In Honor of David and Sarah Pfarr
Devault, Carol and Kevin

In Honor of Lyn and Bruce Ranta
Sutton, Jack and Beth

In Honor of David Ray
Froelich, Andrew

In Honor of Bill and Patsy Reichert
Van Gemert, Rob

In Honor of Maureen Riopelle and Robin Baliszewski
Wilson, Sara

In Honor of Ali Scheig's Birthday
Scheig, KT

In Honor of Gerry Schwaller
Frank, Rick and Barbara

In Honor of Priscilla Schwartz
Rossman, Glen and Grace

In Honor of Sue Seeberg
Cera, Eric

In Honor of Marie Squire
Odekar, Vilan

In Honor of Bill Surbaugh
Cantley, Mary and Shelby

In Honor of Teresa Thiede
Boal, Tracy

In Honor of Brownie Trainer, Mary Brevard, and Mary Jane Rintelman
Frank, Rick and Barbara

In Honor of Bill and Barbara Urbrock's 60th Wedding Anniversary
Urbrock, Stephen

In Honor of David Van Gemert
Van Gemert, Rob

In Honor of Tim Wiegman
Burdett, Katie

In Honor of Al Wittenkeller
Wise, Karl and Jane

In Honor of Beth Robertson Yount
Kelly, Lori and Shawn

Memorials

In Memory of Brian Aden
Aden, Chad
Aden, Curt
Aden, Gerald and Janet
Aden, Lora
Aden, Nancy and Fotinakes, Nicholas
Aden, Ronald
Aden, Steve and Shellie
Aden, Wanda
Anonymous (12)
Barnes, Blaine and Angela
Belanger, Craig
Benedict, Allan
Brookmyer, Amy
Brunk, Karen and Sam
Carle, Sara
Carson, Matthew
Chen, William
Cleveland, Rachel
Concannon, Jean
De La Rosa, Hector
DeCaire, David and Ronda
Devestern, Lauren
Ephraim, Jonathan
Guidepoint
Gull, Ellen
Hahn, Robert
Healy, Lillian
Highfield, Corey
Intellisurvey, Inc
Isenberg, Harold and Tammy
Jackson, Alice
Jackson, Sally
Jacob, Jeannine
Johnson, Jesse and Rachael
Kanaar, Rebecca
Kates, Michael
Keller, Ed
Kemp, Troy
Kim, James

In Memory of Brian Aden, continued
Kompere, Claire, Pam, and Chris
Ladyzhensky, Leo
Langsen, Erica
LEK Consulting & Colleagues
Lynch, Nate
Mantis, George and Stephanie
Manwaring, Benjamin
Matousek, Sue and Jon
Maxfield, Jill and Bradley
Melton, Mackenzie
Nagaraja, Candace and Kishore
Nelson, Andy and Lori
Pearlman, Michael
Peters, Wesley and Cheryl
Picciola, Emanuele
Popielewski, Mary and Hall, Steve
Popielewski, Michele
Popielewski, Sharon and Ted
Powell, Gregg and Katherine
Rogers, Carol
Roznowski, Marie
Sabbatino, Matthew
Saenger, William
Saranno, Therese
Sawada, Yuria
Schilling, Alison
Shapiro, Samuel
Sharma, Aabha
Sher, Benjamin
Spicuzza, Marie and Gustafson, Kort
Spicuzza, Patricia
Sprauer, Catherine
Steingoltz, Maria
Szalinski, John
Testwuide, Molly
Till, Susan
Turner, John
Waddington, Kate
Webb, Christie
Weinstein, Adam
Wildt, Michael
Wolfish, David
Wu, Jen
Zhu, Jenny

In Memory of Darrell "Barky" Anderson
Merline, Robert and Linda

In Memory of Ted and Virginia Arey
Anonymous

In Memory of Steve Banasik
Prindiville, Mary

In Memory of Francha Barnard
Barnard, Elizabeth and Church, Steve
Finger, Jack and Diane
Klimaitis, Ron and Dougherty, Gloria
Nigrelli, Judith
Olson, Rolf and Carol Ann
Tessner, Susan
Thilly, Roy and Mary

In Memory of Jeanne Barnard
Cakerice, Roy and Myrna

In Memory of Paul Behrens
Behrens, Carol

In Memory of Mary Ann Blahnik
Brevard, Mary
Frank, Rick and Barbara
Stone, Tim and Sue

In Memory of Bob Brogan
Brogan, Gisela

In Memory of Bob Brogan, continued

Brogan, Julie
Dullard, Steve and Deb
Kirkwood, Rhonda
Krapf, Wiley and Roselyn
Luker, Don and Lynne
Parsons, Bill and Betty
Prindle, Peggy
Venderley, Charles
Village Clothier and Consignment

In Memory of Theophilus “Nash”

Buckingham
Ewaskowitz, Jeff

In Memory of Laura Bresnahan Bush

McNicholas, Elizabeth

In Memory of Tim Byers

Hutten, Jim and Helen

In Memory of Kathy Caliaro

Herbst, Giz and Linda

In Memory of The Campbells of

Jacksonport
Frings, James

In Memory of Betty and Henry Carstens

Carstens, Peggy

In Memory of Nola Cook

The Harding Group, LLC

In Memory of Dick Cornette

Marsh, Darren and Dawn

In Memory of Barbara Craig

Brevard, Mary

In Memory of John Danforth

The Sackerson Family
Zink, Lou and Betty

In Memory of Mary Dauffenbach

Brevard, Mary
Keith, Annie and Hurst, Mark

In Memory of David Townley Debenham

Debenham, Barbara

In Memory of John Denbow

Wilcox, Jock and Karen

In Memory of Joe Deschler

Goldberg, Barbara and Larry

In Memory of Harold F Deutsch

Friedl, Mike and Carolyn

In Memory of Thomas Donovan

Bartels, Kathryn
Birringer, Charles and Prudence
Dolven, Scott and Sharon
Evers, Janet
Hackbarth, Carol
Harling, Lee Ann
Heidt, Robert and Jean
Jones, Jerlene
Knab, Thomas
Kobylski, Craig and Christine
Lafountain, Gina
Madden, Martha
McAninch, James and Susan
Moeller, Jane
Mutchler, Keith and Sherry
Schmelzer, Gretchen
Wahlen, Jo
Winzenz, Jerold and Karon

In Memory of Bob Eccles

Berger, Amy and Nager, Glen
Borsuk, Paul
Campbell, Jean
Dunkle, Margaret
Moore, Duncan and Moore, Claire Eccles
Pryor, Barbara
Rizzo, Ronald
Sagoff, Kendra and Mark

In Memory of Maribeth Garafalo

Kilty, Tamara

In Memory of Delphine Gerdman

Antink, Nancy and Bill
Gerdman, David
Gerdman, Gary and Pat
Gerdman, Gil and Lynn
Gerdman, Glenn and Joyce
Johnson, Alan and Gail
Kapczynski, Mike
Neitzel, Judy and Dick

In Memory of Martha Kay Glessner

Barnes, Dave and Jocelyn
Card, Susan
Chelsvig, Cathy
Davis, Pam
Glessner, Rod and Susan
The Harding Group, LLC
Lash, Susan
Latta, Paula and Ralph
Morgan, Michael and Ann
Mugrove, Lisa
Redwine, Julia
Reinhold, Tina
Sindlinger, William and Ann
Stevenson, John and Jane
Stratton, Mary

In Memory of Art and Sandy Greaves

Herbst, Giz and Linda

In Memory of Dick Grelek

Brevard, Mary

In Memory of Raymond Gulbrand

Herbst, Giz and Linda

In Memory of Ronald and Helen Gustafson

Prokes, Lori

In Memory of Craig Hammerberg

Beidler, Prue and Frank
Connolly, Patrick
Dey, Christopher
Dill, Jennifer
Feiman, Eli
Gan, Fay
Giesemann, Evan
Glaessner, Emily
Grobes, Brandt and Sarah
Gupta, Purnendu and Terri
Hammerberg, Norma
Hilltop Investment Partners, LLC
Kerby, Sophia
Morrison, Pamela
Nelson, Keith and Lori
Newton, Samuel
Nguyen, Kim and Shu, Eric
Place, Sandra
Richardson, Irving
Richardson, Jo and Ambrose
Rogge, Katie
Rosenberg, Benjamin
Sampson, Caroline
Schneider, Jonathan
Sifen, Jeff
Strickling, Robert and Smith, Shelby
Trznadel, Nadine
Twomey, Madeline

In Memory of Klaus Hartter

Higley, Bill and Kandy
Tobin, Thomas

In Memory of Edie Hibbard

Armour, Gerald and Mary Ann

In Memory of Edith and Bill Hibbard

Molinaro Family

In Memory of Barbara Dezelan Hill

Eckers, Cathy, Melinda, Kathie, and Sue

In Memory of Avery Hossier

Ewaskowitz, Jeff

In Memory of Aub and LaVerne Johnson

Johnson, Lisa

In Memory of Arthur Kaftan

Luckerman, Douglas and Kaftan, Susan

In Memory of Larry Kaufman

Levine, David and Kaufman, Laura

In Memory of Dottie and Wally Klepp

Cummings, Susie

In Memory of Karl Klug

Birger, Jim and Susan
Davis, Rob
Heeringa, Don and Coggin
Hollingshead, Judy
Jansky, Chuck and Ann
Klug, Lucy
Lokken, Ron and Judy
Lukes, Charlotte
Ottum, Jeff and Barb
Sausen, Julie and Ted
Turrieff, Tom and Jo Ann

In Memory of Raymond (Skip) Koch

Koch, Laura

In Memory of Donald Larsen

Woehl, Roger and Sheryl

In Memory of Jacqueline Lau

Bavry, JoAnn

In Memory of Marce Leonard

Lutterman, Ted and Buckley, Susan

In Memory of Ann Flinspach Lewis

Bier, Angela and Kim, Jimmy

In Memory of Christine Lindenberg

Wizniak, Susan

In Memory of Tim Maley

The Harding Group, LLC

In Memory of Mildred McCormick Malzahn

Malzahn, Karen

In Memory of Marcia Mantei

Grimes, Patrick and Kristen

In Memory of Mike Martin

Blietz, Craig and Steger, Kim

In Memory of Dennis Mitchell

Kohn, Aimee

In Memory of George and Irene Morris

Morris, Geoffrey and Lois

In Memory of Paul Nauman

Bartel, Ron and Teri

In Memory of Gordy Nelson

LeVoy, Lee

In Memory of Evonne Olson

Caple, Louis

In Memory of Kent Pahlow

Funke, Lynn and Craig
Grubbs, Michael
Harvey, Michael and Kathryn
Hubbard, Derek and Angela
Melin, Phyllis
Mueller, Brad
Vandersteen, John

In Memory of Johanna Wright Parkes

Gage, Barbara

In Memory of Anoo Patel

Patel, Dawn and Kumbalek, Dale

In Memory of Barby Patronski

Luvisi, George

In Memory of Chick Peterson

Anderson, Jack and Sue
Anschutz, Dean and Susan
Austin, Bridget
Bergen, Jeffrey and Judith
Buell Family
Chomeau, Dave and Betty
Cottage Row Framing and Gallery
Ellsworth and Carla Peterson Charitable
Foundation
Flottman, Paul and Judith

In Memory of Chick Peterson, continued

Freedman, Joel and Donna
Gilson, Helen
Hartmann, Bob and Bonnie
Higgins, Tom and Christine
Kennedy, Teresa
Kiehnau, Dan and Pat
Klimaitis, Ron and Dougherty, Gloria
Lukes, Charlotte
Merline, Robert and Linda
Molina, Vincent
Nelson, Ranny and Kris
Ellsworth and Carla Peterson Charitable
Foundation
Peterson, Susan
Plansky, Bob and Joyce
Pouchert, Yvonne
Sarton, Mike and Julie
Scheckler, Bill and Rolliana
Stanislaus, Mike and Poeppel, Melinda
Stone, Tim and Sue
Thorp, Burt
Wilson, Paul and Kay
Wise, Karl and Jane
Woerfel, Mark and Sarah

In Memory of Patricia Picha

Corajod, Brian and Cheryl

In Memory of Roger Pinkert

Birger, Jim and Susan

In Memory of Don Polzin

Gerrits, Dottie
Kozak, Kenneth and Patricia
Spransy, Richard and Nancy
Startt, James and Catherine
Wellenstein, Lawrence and Mary
Ziegler, Barbara Packard

In Memory of Floyd and Shirley Popour

Popour, Lyle and Nancy

In Memory of Eugene Prime

Prime, Gail

In Memory of Don and Barb Rank

Rank, John and Natasha

In Memory of Dave Richard

Hanson, Danny and Danielle

In Memory of Carol Riesmeyer

Fitzpatrick, Mark and Nancy

In Memory of Elizabeth Rose

Wagner, Martha

In Memory of Eunice Rutherford

Schulze, Gary and Bev

In Memory of Sandy Sannes

Block, Marsha
Brodie, Kent and Robin
Dittus, Robert and Lois
Grasse, Thomas and Lynda
Hanson, Delene and Ueberroth, Thomas
Jelinek, Mary
Naatz, Kenneth and Kathleen
Petri, Phyllis
Podewils, William
Raz, Christine
Rossman, Cinnamon
Sannes, Randy
Schmidt, Donna
Whitson-Schmidt, Donald

In Memory of Robert Schartner

Chaudoir, Jodi
Dexheimer, Arvin and Judith
Gabert, Trent and Salva
Geisel, Heidi
Greisen, Ron and Mary
Krueger, Dean and Judith

In Memory of Mike Schinkten

Parsons, Bill and Betty

Memorials AND Bequests, *continued.*

GIFTS RECEIVED BETWEEN 1/1/2022 AND 3/16/2023

2022

In Memory of Bob Schmidt

Barkman, Nancy
Benson, Mary
Burroughs, Lucy

In Memory of Bob Schmidt, continued

Dalebroux, Dean and Lori
Dew, John and Jill
Dhein, Jere and Sheri
Garner, Frederick and Carol
Gilson, Russ and Paula
Granias, Cal
Heinrich, William and Lorena
Howald, Timothy and Judith
Johnson, Rick and Amy
Jones, David and Patricia
Kaftan, George and Bonita
Kiedinger, Barbara
Kneeland, James
Konecny, Michael and Nancy
Kuehne, Carl and Mary Ellen
Lemorande, Thomas
Liebergen, Gary and Adrienne
Liebmann, Bert and Diane
Lucier, Larry and Jeanne
McDonough, Courtney
Mielke, Bill and Ann
Miskella, Michael
Morgan, Joseph and Mary Kay
Plansky, Bob and Joyce
Quinn, Thomas and Mary
Rockne, Paul and Judy
Samson, Barbara
Schmidt, Maureen
Schumacher, Paul and Barbara
Walch, Jeffrey and Mary Jo
Wangerin, William and Barbara
White, David and Marilyn Sue
Wiers, Tom and Kate

In Memory of Carl Scholz

Cappelle, Jules and Chris
Carlson, Juanita
Freyman, Bill and Sarah
Heeringa, Don and Coggin
Kile, Lucy
Leonard, Rob and Jill
Lukes, Charlotte
Merline, Robert and Linda
Ottum, Jeff and Barb
Parsons, Bill and Betty
Schmelzer, Gretchen

In Memory of Pete Schuster

Schuster, Carol

In Memory of Robert Schwaab

Schwaab, Mike and Maureen

In Memory of Lois Shelgren

Beck, Vesna and William
Hoffman, Ilse
Tenner, Vicki

In Memory of Richard Shelgren

Beck, Vesna and William
Hardy, James
Jakaitis, Judith
Kolar, Dan and Karen
Milligan, David
Slattery, Ellen
Soule, Whitman and Coplon, Julie
Tenner, Vicki
Whitehead, Jeff and Kathy

In Memory of Lucille Sweeney Sohns

Wycisk, Max and Margaret
Wycisk, Paul and Maureen

In Memory of Roger Stoeger

Marsh, Darren and Dawn

In Memory of Eleanor and Dr Michael

Stoklos
Stoklos, Greg

In Memory of Jim Stollenwerk

Anderson, Eric and Ann
Stollenwerk, Alice

In Memory of Jeff Sweet

DeBruine, Jim and Cindi
Lablonde, Jack and Sara

In Memory of Rose Adele Tenor

Tenor, Jennifer

In Memory of Bob Ury

Wagner, Martha

In Memory of Marilyn Jensen Van Gemert

Van Gemert, Rob

In Memory of Phebe Vance

Young, Howard and Ann

In Memory of Jerry Wachowiak

Fredelake, Samantha
Hoeft, Brad
JW S Corporation
Laszkiewicz, Tim
Multer, Robert and Diana
Multer/Thieme Families
Patek, Ann and Islo, Spencer
Ritter, Mike and Jodi
Swiezynski, Ted and Joan
Worzalla, Patricia

In Memory of Susie Weber

Anonymous
Bley, Lee
Brungraber, John and Lorrie
Brungraber, Kim and Russell
Cowans, Shelly and Bill
Herbst, Giz and Linda
Madden, Michael and Barbara
Marshall, Dale and Kathy
Merritt, Tom and Nancy
Mocco, Cynthia
Stephenson, Kathy
Thompson, Linda

In Memory of Christine and Nelson Whyatt

Sandor, Bela and Ruth
Schlafge, Joyce

In Memory of Nelson Whyatt

Berninger, Dieter
Griffin, Shirley

In Memory of Steve Wilkie

Samson, David and Wilkie Samson, Krista

In Memory of Judy Wittenkeller

Bultman, David and Marge
Dwyer, Amy Watts
Surbough, Bill and Cheryl

In Memory of Sylvia Youell

Coleman, Delores

Bequests

Barnard, Francha
Larson, Richard and Roberta

We thank the following donors who, in partnership with the Door County Land Trust, help protect special places across the Peninsula and islands.

Welcome to our new supporters! Donor names listed in **bold type** made their first financial contribution to the Land Trust in 2022.

\$50,000 and above

Brico Fund LLC
David V Uihlein Sr Foundation
Fischer, Alexandra and John
Frank, Rick and Barbara
Knowles-Nelson Stewardship Program, WI-DNR

\$20,000-\$49,999

Anonymous
Bell, Hugh and Joyce
John C Bock Foundation
Brevard, Mary
Brumder, Robo and Kathy
Bush, Mark and Kathy
Callsen, Dave and Vonnie
Geyer, Phyllis
Haggerty, Mike and Jeanie
Laird, Ben and Rintelman, Mary Jane
Lester, Jim and Barbee
Lisle, Tom and Bev
Johanna W Parkes Chambers Island Family Trust
Trainer, Robert and Mary
Uihlein Jr, David and Julia
Robert A Uihlein Foundation Inc.

\$10,000-\$19,999

Alexander, Duncan and Keane, Kit
Anonymous
Baumgartner, John
Black, Jim and Trish
Brunsch, Robin and Julie
Bernal T Chomeau Private Foundation
Diekman, Karl
Diekman, Marianne
Fletcher, Robert and Suzanne
Friedl, Mike and Carolyn
The Mark and Anne Hansen Foundation
Kessler, Dennis and Barbara
Koch, Laura
Larson Estate, Richard and Roberta
Olson, Ted and Lady
Ross, Mason and Julie
Schreiber, John and Kathleen
Steffen, Michael
Von Briesen, Ted and Peggy

\$5,000-\$9,999

Al Johnson's Swedish Restaurant, Inc.
Ambuel, Helen
Anonymous
Brezan, Barry
Brown, Bob and Kathy
Ceres Foundation
Cummings, Susie
Eccles, Mary
Franklin, Larry and Cissie
Glaisner, Dick and Ellen
Karges, Steven, Lynn, and Kimberly
Licata, Tony and Judy
Lindstrand, Keith and Katherine
Ling, Bob and Heidi
Luber, Anne
Luber, Paul and Cathy
Maihaugen Foundation
McCoy, Mike and Marge
Mohr, Wayne and Barbara
Murphy, James K and Lititia
Nikles, Brad and Barb
Ottum, Jeff and Barb
Pepelnjak, Anna
Queenen, Allen and Karen
Roenigk, Randy and Julie
Rutabaga Paddlesports LLC
Schmitz, Michael J
Siebel, Barbara
Thenell, Julie
Van Den Brandt, John and Jean
Van Gemert, Rob
Vanderson, William and Gehrke, Christina

\$2,000-\$4,999

Acker, Cindy and Fred
Anonymous (2)
Baune, Brad and Deb
Beadell, Priscilla and Anthony
Becker, Bruce and Patty
Bednarowski, Keith and Mary
Bell, Steve and Susan
Berg, David and Diane
Bero, Robert and Judy
Bertler, David and Lisa
Blossom, John and Linda
Bowman, John and Kay
Bromley, Julie and David

The Door County Land Trust gratefully acknowledges the Door County Community Foundation for facilitating twenty donations through donor-advised funds.

Financial Supporters

Bunning, Jim and Barbara
 Callen, Chris and Katie
 Capp, Stephen and Carol
 Chomeau, Doug and Mary
 Ciezki, Nancy and Kostecke, Diane
 Conner, Dick and Kit
 Damrow, Roger
 Del Alamo Jr, Linda and Jorge
 DeNardo, Tony and Donna
 Deschler, Peter and Gina
 Deutsch, Regine
 DeWitt, David and Julie
 Door County Ice Cream Factory
 Door County Medical Center
 EarthShare
 Elson, Christine
 Fales, Mary
 Goldberg, Nancy
 Grubman, Eric and Green, Stephanie
 Guenther, William A
 Hake, Donna and Bruce
 Robert E Hansen Family Foundation
 Heim, Paul J and Watkins, Julie
 Hislop Family Foundation
 Hitt, Brad and Karol
 Hollingshead, Judy
 Ingwersen, Jim
 Jacobson, Rod and Jean
 Janning, Donna and Jim
 Kalmbach, Lois
 Kimmel, Don and Joan
 Klug, Lucy
 Kuester, Dennis and Sandy
 Lantero, Peter and Dawn
 Linquist, Ann
 McDonald, Kevin and Wanda
 McGinnis, John and Billeaud, Lana
 McLeish, Ken and Chris
 Mickevicius, Ray and Mickey
 Miller, Ed and Sandy
 Moede, Alexandra
 Morgan, Michael and Ann
 Munch, Nancy
 Nelson, Christopher and Olin, Joyce
 Nooyen, Steve and Kristi
 Northrop, Steve and Kaaren
 Perkins, Judy and Keen, Dave
 Riopelle, Maureen and Baliszewski, Robin
Schmidt, Beverly
 Seibold, Gary and Julie
 Semaca, Jenny and Nick
 Stanley, Emmy and Steve
 Stone, Tim and Sue
 Swanson, John and Deanna
 Swarm, Anton
 Thilly, Roy and Mary
 Thompson, Doris L
 Turriff, Tom and Jo Ann
 Vichick, Greg and Wendy
 Vincent, John and Annette
 Wake, Brian and Joan
 Waldburg-Wolfegg, Andreas
 Walker, David and Malecki, Maribeth
 Walter, Ron and Suzy
 Warner, Rose
 Watson, Rob and Picken, Judy
 White Gull Inn
 Williams, Jeffrey and Susan
 Wilson Jr, John
 Wolff, Bill and Kathy

\$1,000-\$1,999

Abbott, Ann
 Alibi Marina and Harbor Guest House
 Allen, Mark and Fisher, Judy
 Anderson, Bob and Dorothy
 Anderson, Henry and Levine, Shirley
 Anderson, Mary Pikul
 Anderson, Stefan and Joan
 Andino, Katy
 Andrae, Dan and Marjorie
 Anonymous
 Ator, Joanne
 Baer, Charles and Stephanie
 Barrett, Jean and Neuman, Paul
 Batzli, George
 Baumann, Daniel E
 Becker, Carl and Susan
 Benson, Adam and Linnea
 Blahnik Investment Group, Inc
 Blanchard, Pam
 Blue Dolphin House
 Boldt, Pat
 Bramsen, John and Norma
 Brooks, Linda
 Brorson, Jon and Linda
 Brown, Karen and Kingsley
 Buechel, Jim and Becky
 The Richard W and Dorothy J Burkhardt
 Charitable Fund
 Bykowski, John and Rose
 CaJacob, Claire and DuMont, Debra
 Carl, Rudy and Patricia
 Chase, Stuart and Gabriela
 Clark, Rick and Patricia
 Connolly, Dennis and Bonnie
 Conroy, Ann
 Conroy, Peter and Beverly Ann
 Cook, Andrew and Karen
Coplien, Doris
 Cramer, Ward and Judy
 Cubar, Susan and Jordan, Thomas J
Culver, Curt and Sue
 Cushman, Betsy and Preston, Barb
 D'Abbraccio, Deanna and Morgan, Barbara
 Dagon, Russell and Sandy
 Danielson, Donna
 Davis, Dwight and Linda
 Davis, Rob
 Doerr, Marilyn and David E
 Doneff, Robert and Lynn
 Dubick, Marc and Kris
 Eagle Harbor Inn
 Ecology
 Fallucca, Laurie
 Fehring, Lawrence and Liz
 Fiedler, Carol and Therien, Claude
 Fiedler, William
 Finger, Jack and Diane
 Ford, Diane and Patrick
 Forester, James
 Fox, Jim and Luann
 Friends of Door County Land Trust
 Fuhrmann, Don and Barbara
 Gallt, Jim and Margie
Gardi, Patricia and Garrett
Geisler, Sandra
Gellman, Bob and Nancy
 Gomoll, Tom and Kate
 Gould, Barbara
 Gray, Patrick

Gudmundsen, Jake
The Patrick and Beatrice Haggerty Foundation
 Hans, Sydney and Strickling, Lawrence
 Hansen, Doug and Cathy
 Hardy, Nancy
 Harlan, Bob and Madeline
 Hart, Anne and van Duym, Andy
 Haswell, Anthony
 Henke, Rob and Jean
 Hermann, Donna
 Hermann, John and Dolores
 Holey, Mark and Michaela
 Honig, Robert and Lisa
 Ralph and Genevieve B Horween
 Foundation
 Jankowski, Theodore and Patricia
 Johnson, Albert and Cynthia
 Johnson, JJ and Kris
 Johnston, Mike and LeTourneau, Sara
 Kanas, Richard and Moore, Linda
 Kapolnek, Jean
 Klein, Michael and Maureen
 Klug Jr, Karl
 Knight, Sue
 Koch, Tom and Brenda
 Kosky, Judy
 Kostecke, Keith and Jann
 Kurtz, Jim and Becki
 Lanser, Brian and Sue
 Larsen, Sara
 Later, Kate and Godshall, Jack
 Lauter, Charles and Estella
 Lemburg, Ruby L
 Lewis, Elmer
 Lindsay, Bill
 Luke, Jacquie and Rice, Ken
 Lukes, Charlotte
Lundell, Richard and Sherry
 Lynch Family Fund
 Lynch, Chuck and Barbara
 Lynch, Rich and Mary
 Madden, Michael and Barbara
 Mahoney, James and Gail
 Maloney, Kevin and Laura
 Manges, Randy and Lisa
 Marshall, Elaine
 McLaughlin, Rick and Joan
 Merline, John and Wilkerson, Inger
Milton, Bart and Heather
 Moline, Ronald and Barbara
 Moore, Chris and Sheri
 Moore, Tom and Kathie
 Myerson, Carla and Robert
 Nell, Patricia A
 Nelson, Jim and Mary
 Nicolet Bank
 Olsen, Lawrence and Lynn
 Olson, Carol and Bruce
 Olson, David and Fritsche, Claire
 Orner, William
 Parsons, Bill and Betty
 Perry, Kerry
 Pfeiffer, Mrs Gabriele F
 Place, Sandra
 Pope, Rex and Linda
 Pritchett, Wendell and Kringel, Anne
 Prusik, Dennis and Maietta, Maryellen
 Przybylo, Jay
 Puszycki, Ron and Chris

Radford, Craig and Lynn
 Raeker, Gary and Chris
 Rakoczy, Joe and Marie
 Ranta, Bruce and Lyn
 Richards, Bob and Nancy
 Richards, Jim and Marianne
 Ritger, Ed and Stevie
 Rockway, Todd and Sheryll
Rose, Debbie Baranek
 Samson, Steve and Peggy
 Sandor, Bela and Ruth
 Sanduski, Steve and Linda
 Schaars, Bill and Mary Jo
 Schanock, David and Kim
 Schaper, John and Susan
 Schmelzer, Gretchen
 Schoof, Tamara Su
 Schultz, Craig and Sandy
 Schultz, David and Kristine
 Sedar, Jo
 Sensenbrenner, James B and Carol L
 Shannon, Dan and
 Hagman-Shannon, Deborah
 Small, Dr Ron and Christine
 Smith, Phil and Katie
 Squire, Marie and Jara, Jeff
 Storm, Phil and Ann
 Stott, Nancy
 Surbaugh, William L and Cheryl S
 True North Real Estate
 Turner, John and Judy
 Urbrock, Bill and Barbara
 Van Lanen, Frances
 Vanden Houten, Dale and Scott, Richard
 Vaughan, Don and Jane
 Voskamp, Susan
Wait, Greg and Jodi
 Walker, Bill and Sunshine
 Walker, Melissa
 Wallace, Roger and Debbie
 Watson, Stacey
 Wenberg, David and Brenda
 Wenzel, Judith and Ristow, Thomas
 Wester, David and Sharon
 Wick, Tim and Cindy
 Wilcox, Jock and Karen
 Wilkie Samson, Krista and Samson, David
 Wilkie, Charles and Nancy
 Wilkinson, Thomas and Suzanne
 Wisconsin Land Fund of the Greater Green
 Bay Community Foundation
 Wittenkeller, Al
 Yard, Albert
 Yeast, Gary and Barbara
 Zimmer, Fred and Diane

A number of donations are given anonymously through Donor-Advised Funds (DAF) each year. If you have given through a DAF and your name is not listed, please contact us so we may appropriately thank you!

2022 Financial Supporters

\$500-\$999

Abrahamson, Theo and Jan
Ackell, Peter and Laurie
Anderson, Jim and Jane
Anonymous (5)
Arduser, Bruce and Jane
Austin, George and Vukelich-Austin, Martha
Banks, Kendall and Susan
Bay Ridge Golf Course
Benson, Don
Bier, Angela and Kim, Jimmy
Blackburn, Bob and Kay
Blanton, James and Barbara
Bloom, Jeraldene
Bosworth, Bob and Wendy
Bratz, Chris and Lisa
Bridge Up Brewing Company
Brogan, Gisela
Budzak, Archie and Kathe
Budzak, Lynn
Bulmahn, Melissa and Scott
Burke, Dan, Heidi, Makenzie and Nathan
Burkhardt, Jon and Karen
Carr, Diane
Chapman, Don and Deb
Claggett, Tom and Meg
Classen, Peter and Barbara
Coffman, Scott and Kircher, Robin
Collins, Dan and Aten, Nancy
Conway, Darrell and Susan
Cowles, Rob
Cramer, Chris
Crawford, David and Samara
Debenham, Barbara
Dee, Lauren
Derksen, Jon and Susan
DiBuono, John and JoAnn
Dickmann, Jeff and Karen
DiMonte, Jim and Kerri
Donnino, Joe and Sue
Duffin, Jacinda
Eades, Virginia T and Alan G
Egan, Martha
English, John and Claranne
Erickson, Mary
Fellman, Megan
Fialkowski, Mark and Julie
Fredrick, Richard and Jane
Frey, Fred and Barb
Frings, James
Fritz, Don
Froemming, Barbara D
Frudden, Bruce and Grace
Fuhrmann Clark, Kristin and Clark, Stephen
Gauger, Stephen and Aimee
Gerdman, Gil and Lynn
Germain, Chuck and Faye
Gerrits, Dottie
Gillen, Bev
Golla, Jay and Linæ
Hall, Kevin S
Hall, Lane and Moline, Lisa
Halverson, Paul and Gloria
Harmon, Judy and George
Haus, David and Jill
Hayes, Howard and Charlotte
Healy, Beth and Fordney, Mike
Hendrickson, Duane
Hlavacka, Roger and Linda
Holly, Mike and Deb
Holm, Barbara
Holman, Dave and Barbara
Horst, Robert

Jacobs, Steve and Amy
James, Mary Beth and Barry
Jerry's Flowers
Johnson, Alan and Gail
Johnson, Arlene
Johnson, Dave and Mel
Johnson, Dennis and Janet
Johnson, Gary and Krista
Johnson, Sandra
Jones, Douglas
Judd, Robert
Kane, Ralph and Gretchen
Keller, Dr Tom and Marge
Kimbell, Becky and Dave
Kinosian, Bob and Sue
Kirkwood, Rhonda
Knuettel Family, Paul and Barbara
Konitzer, Thomas and Linda
Kostro, Jerome
Krebs, Marty
Kruse, Kent and Ginner
Laluzerne, David and Lynn
Larson, Eric and Lewis, Susan
Lautenbach Orchard Country
LaViolette, Jeff and Shelly
Lecy, Jerry
Lengh, Robert and Carolyn
Levine, David and Kaufman, Laura
Lindahl, Bob and Van Arragon, Wilma
Livingston, Jan and Curtis, Al
Lokken, Ron and Judy
Malloy, Michael and Mary
Mathys, Ken and Shawn
Matzke, Rev Mark G and Susan
Mazeski, Conrad and Kelly
McCarthy, Chip and Mary Jo
McCutcheon, Windsor and Mike
Mead, Chuck
Meissner, David and Marion
Metz, Matthew and Johnson, Aleathea
Moegenburg, Pete and Laura
Moore, Mary J
Moroder, Mary and Myrland, Jim
Morrison, Michael
Moster, Mary
Mudrak, Ray and Pat
Nabbefeldt, Scott and Peggy
Nelson, Bruce and Cindy
Novicki, Joe and Judy
Ostrand, Andrew and Gina
Panzer, Fred and Sandy
Parks, Bob and Cathi
Paschen, Douglas and Bradshaw Finch, Jane
Pennington, Mark
Perille, Robert and Amy
Peterson, Scott and Desenis, Judy
Petrie, Pete and Lucia
Pikas, Bruce and Joan
Prindiville, Mary
Quick, Doug and Rhonda
Rabjohns, Ronald and Camilla
Racker, Stephen and Daphne
Rand, Jane
Reza, Naseem and Lou
Riordan, Brighid
Romant, Carrie and Nibbelink, Karl
Roppuld, Paul
Rosecky, Mary
Ross Estate Planning
Russell, Stan and Dorothy
Sannes, Randy
Satola, Nancy
Sautebin, David and Karen
Sauter, Martha
Schmidt MD, Beth and Fritz
Schoenfeld, David and Green, Candice
Schultz, Jim and Marti
Schultz, Susan
Schwaab, Mike and Maureen
Schwartz, Carl and Barbara
Scrivner, Tom and Meredith
Sherman, Jerry and Lipp, Carolyn
Sickel, James and Kathlin

Silberman, Ann Monteith
Slovins, Nathan and Julie
Smythe, Dick and Mary
Snapp, Erik and Brubaker, Cathy
Spevacek, Glenn and Kathleen
St Claire, David
Sternher, Elsa and Frank
Stockhausen, Anna
Stout, Chris and Beckstrand, Karen
Sturgeon Bay High School Service Club
Sweeney, Michael and Barbara
Szuberla, Wayne and Geri
Terra Cottages
Thurrow, Dave and Posy
Troutman, Bryan and Diane
Uteley, Bill and Phyllis
Van Duym, Raina and Franco, Sebastian
Wahlert, David and Nancy
Washington Island Ferry Line Inc.
White, Richard and Jan-ann
Wilson, Nick and Demoly, Marc
Witt, Gene and Carmen
Wycisk, Paul and Maureen
Zapffe, Carl and Sandy
Zaug, Jerry and Joan
Zwettler, Rob and Kelly, Anne

\$250-\$499

Adlam, Robert
Agnew, Bob and Marge
Ahlbeck, Dirk and Tracy
Alexander, Kenneth and Mary Ellen
Allweiss, Allan and Corbett, Emily
Alme, Brian and Luanne
Anastaplo, Theodora and Westerberg, David
Anderson, Eric and Ann
Anderson, Ernest
Anderson, Jack and Sue
Anderson, Renie and Greg
Anonymous (8)
Ashbrooke Hotel
Aukeman, Cheryl
Ballard, Linda
Barrie, Tom and Sue
Basten, Lee and Susan
Baus, Susan and Brian
Beck-Engel, Dave and Terri
Beckett, Caroline and Sandner, Frank
Bhatheja, Alexis Pfeiffer
Bither, Philip and Gavin, Kathleen
Blackwood, Thomas and Joan
Blankenburg, Ralph and Kathy
Bleser, Helen
Blietz, Bev
Braband, Kennard and Mary
Bradley Family, Jim and Libby
Branson, Anne
Bretl, Ron and Linda
Brogan, Julie
Buechel, Lindsay
Bultman, Steven J and Donna M
Cady, Bonnie
Carmen, Sam and Vicky
Chang, Robert and Reynolds, Sheila
Chowdhury, Mofazzal and Audrey
Coleman, Beth and Wessel, Curt
Collins Family, Robert J
Collins, Chris and Judi
Corriveau, John and Mary
Cowan, Karen
Craig, Richard
Craig, Will and Ginny
Cross, Andy
Cummings, James and Lisa
Cushman, Susan and Quimby, Charlie
Dammon, Ron and Candy
DeLisle, Becky
Demanes, Scott and Elisa
Didion, Paul and Bellay, Yvonne
Differding, James C and Dickes, James R
Diltz, Peter and Kathy
Dougherty, Thomas J and Linda L
Doyle, Charles and Rita
Drake, Carol
Drouet, Christina and Michael
Dugan, George and Susan
Eco-Building and Forestry, LLC - Girolamo, Tom and Kathy
Eley, Tom and Victoria
Engelke, Dan and Jean
Enright, Mike and Molly
Erbe, Paul and Laura
Evenson, Phil and Carolyn
Feeney, Barbara
Feist, Tim and Braatz, Laurel
Fermanich, Mark and Flood, Nora
Fickes, Robert and Liesbeth
Filosa, John and Roach, Cathaleen
Fiore, Beth and Michael
First Light Arts LLC - Jim Perry
Forret, Ray and Pat
Forsberg, Bob
Freyman, Bill and Sarah
Fults, Tim and Marsella
The Garden Lady
Gardner, Juliann
Gaskill, Warren and Sharon
Geoffrion, Tim and Jill
George, David and Zelon, Laurie
Gerrits, Nick and Katherine
Gesme, John
Gilford, Steve and Anne
Gills Rock Pottery
Gimelli, Giorgio and Golestanian, Ellie
Glasser, Mark and Linda
Glidden Lodge Beach Resort
Goetz, Janis
Grasse's Grill
Greenfeldt, Barbara and Eric
Gretz, Kenlyn and Lynn
Guenther, John
Hanney, Rick and Roxanne
Hartman, Bill and Mary
Haus, Joel and Le Corvaisier, Eleonore
Hauser, Dick and Carrie
Hauser, John and Laurel
Hayes, Christine
Heinrich, Douglas and Renea
Hickey, Dave and Pat
Hoelzel, Jim and Linda
Hoes, Brady, Jen, and Dresden
Hole, Sarah
Holland, K Michael
Hollenbach, Bryan and Dorothy
Hoppa, George and Nancy
Houston, Mary and David
Hoyer, David and Rachel
Huff Family, Chris and Elizabeth
Jehle, Michael
Jenkins, Mark and Ann
Johnston, Richard and Charlotte
Jonas, Jon and Sally
Jondahl, Thor and Darlene
Kalupa, Anthony and Linda
Kaufman, Marie
Kelsey, Peggy and Teich, Michael
Kiehnau, Jason and Nancy
Kile, Lucy
King, Janis
Kita, Terry
Klimaitis, Ron and Dougherty, Gloria
Koenig, Melissa
Herbert H Kohl Charities
Kopecky, Rob and Cheryl
Korolewski, John and Sally
Korte, Joseph
Krainak, Mike and Farber, Janet
Krapf, Wiley and Roselyn
Krol, Gary and Ekaterina
Kudick, Julie and Wayne
Kummer, Lee and Eileen
Kupper, John and Koestring, Janet
Kwaterski, Mitchell and Carol
LaBorde, John and Lisa
Lacy, Mary Pauly
Landwehr, John

Lang, Carmen
Lapp, Beatrice
Later, Tim and Field, Mary
Lees, Lynn
Lenehan, Roma
Lesica, Mike and Julie
Lhost, John and Cynthia
Lifestyle Health Systems Inc
Lincoln, Jim and Eleanor
Linsley, Dan and Judy
Locher, George and Patricia
Lockhart, Alex
Lockwood, Margaret and Walker, Allin
Loy, Judy and Phil
Lundquist, John and Mary Ann
Luvisi, George
Macola, Greg and McEnerney, Mary
Marsho, Jim and Nancy
Mazza, Peter and Mary
McAninch, James and Susan
McClenahan, Bill
McCoy, Bob and Sharon
McDonough, Dave and Colette
Meiners, John and Alice
Meissner Landscape, Inc
Meissner, Greg and Marsha
Mercurio, Michael and Sarah
Merline, Robert and Linda
Meyer, David and Elizabeth K
Meyer, Lee and Markie
Meyer, Riley and Libby
Mix, Phoebe A
Mohr, Larry and Janet
Mooney, Melissa and Schultz, Philip
Mueller, Paul and Ingrid
Mutchler, Keith and Sherry
Nelson, Joanne J
Nelson, Ken and Wendy
Newkirk, Martha
Norfray, John
Notermann, Tom and Carol
Nowak, George and Susan
Nsight Wireless, LLC/DBA Cellcom
Oimoen Family, Denise and John
Olson, Chris
O'Malley, Peggy
Ostrem, Randy and Lisa
Parks, Alan and Pierce, Lynn
Parks, Bill and Emily
Pelto, Mike and Kathy
Peninsula Vision Care, LLC
Pescheret, Marc and Kathleen
Peshek, Sharon A and Peter A
Peterson, Amy
Pintar, Frank and Angela
Podewils, James and Sadie
Pojunas, Kathleen
Polachek, Joe and Kathy
Pollatz, Lori and Michael
Potts, Greg and Marilyn
Quale, Ann
Raaths, Jack and Susan
Rankin, JoAnne and Jim
Reda, Jeanette T
Reichwald, Harry and Carla
Reiser, Dale and Maureen
Republic Associates Of Wisconsin, Inc.
Ristau, Paul and Barbara
Rix, Bill and Jerri
Roback, David and Virginia
Robertson Yount, Beth
Rogers-Ketterling, Kaye
Rossman, Cinnamon
Rossman, Glen and Grace
Rugg, Mr and Mrs Brian C
Saathoff, Lauren
Saksowski, Margie and Dave
Sandstrom, Karen
Schaefer, James and Lora
Schaulis, Dan and Cindy
Scheckler, Dr Bill and Rolliana
Scheinoha, Chad and Jenny
Scherer, Mark and Jean
Schmeltz, Tony and Barbara

Schneider, David
Scholz, Ruth
Schouten, Thomas and Susan
Schroeder, Brent and Mary Kay
Schroeder, David
Schuh, Dale and Annette
Schuler, Chris and Amanda
Schultz, Jim and Ginny
Sedan, Gary and Kathy
Sharpe, Lindsay
Shields, Walt and Tiggy
Shoemaker, Christina
Shumway, Bernice
Simpson, Kenneth
Skiles, Jeffrey and Barbara
Smith, Kris
Smith, Steven and Bonnie
Spude, John
Stanger, Steven and Arlene
Stanley, Jerrel and Judy
Steffens, Mary
Sternkopf, Richard and Barry, Kathleen
Stevenson, Nancy
Stiefel, John
Story, David and Liz
Strauch-Nelson, Jon and Wendy
Stuebi, Bob and Rose
Tessin, Jeff
Timothy D Tishler D.D.S. Ltd
Trent, Katie
Tveite, Paul and Emily
Twelve Eleven Wine Bar & Provisions
Urbrock, Stephen
Utzinger, Michael and Orchard
Van Zandt, Susan and Michael
Verhagen, Rick and Liz
Vervoren, Thora
Voight, Leon and Nikki
Voigt, Ken and Sue
Volk, Greg and Gretta
Vopat, James and Theresa
Voreis, Mark and Allen-Voreis, Lucia
Wachowiak, Lisa
Wagon Trail Campground
Waldron, Merrilee and John
Wanda, Nick and Jane
Warner, Elizabeth H
Watkins, Norman and Mabel
Weber, John
Weisse, Mark and Patty
Westbrook, Dan and Connie
Westrich, Carole and Todd
Whitman, Maggie
Whitney, John and Jane
Widder, Tripp and Nancy
Wilder, Nick and Keven
Wiley, Sally and George
Wilkie, Joan
Winter, David and Rene
Wise, Karl and Jane
Wolfram, Dan and Joan
Wolter, Kirk and Mary Jane
Wood, David and Doughty, Jane
Woodyard, John and Pat
Wulfsberg, Susan
Yae, Rich and Lisa
Yeomans, Geoffrey and McKeefry, Bruce
Ziarnik, David and Shelley
Zimdars, Nan and Hoesly, Michael
Zimmerman, Steve and Jan
Ziolkowski, Steve and Sherry
Zuckerman, David and Madsen, Judy

\$150-\$249

Abreu, Jean
Alfred, Larry and Linda
Allen, Edson and Loretta
Alt, Tom and Sue
Anderson, Linda
Anonymous (4)
Aufreder-Sebetic, Jacqueline L
August, Alan J
Austin, Bridget

Axelrod, Jon
Barounis, Tom and Diane
Barta, Heidi
Bauer, Jim and Beth
Bearman, Ken and Larsen, Karla
Behrens, Carol
Benedict, Roger and Christensen, Paula
Bennett, Nancy and Tom
Berk, Avi and Laurie
Bichler, Kevin and Barbara
Birnschein, Bryan and Ann
Bisacchi, Ken and Martha
Biwer, Adam
Block, Jim and Allen, Terese
Bloedorn, Lucy and Michael
Bochek, Rick and Knutson-Bochek, Bev
Bolton, Jeff and Karen
Boucher, Karen and Taylor, Rick
Boyd, Ken and Carol
Brennan, John and Suzy
Brochtrup, Christine
Buck, Ryan
Bultman, David and Marge
Burroughs, James and Karen
Caldwell, Susan
Camenisch, Andrea
Campbell, Kathy and John
Cappaert Contemporary Gallery
Cavanaugh, Rebecca
Chelmecki, Tony and Trudy
Christenson, Toni
Ciszewski, Jerry and Elaine
Clay, Tom and Lisa
The Clearing
Collins, Tom and Pam
Cook, David
Cotts, Bill and Wilson, Carol
Coventry, Martha
Cox, Don and Trudy
Cushing, Marilyn
Dahlberg, Daniel and Nancy
Dallmann, Dan and Shirley
Danis, David and Nancy
Daubner, Chriss
Davie, Susan DeWitt
Debenham, Dave and Sarah
DeBruine, Jim and Cindi
DeMint, Tom and Judy
Donaldson, Nancy
Door Born LLC
Door Pioneer Trailblazers Snowmobile Club
Dowell, Linda Cushman
Dullard, Stephen and Debra
Eckert, John and Judith
Eckmann, James and Joann
Egg Harbor Business Association
Ehlers, D Todd and Cynthia
Ehrfurth, Carrie and Frye, Dave
Emmerich, Gerald and Signe
Engl, Rob and Robin
Enke, Finn and Nan
Ewaskowitz, Jeff
Ewig, Marianne
Fales, Andy
Farrell, Susan
Fay, John and Randi
Fedenia, Sue and Stanley, Jeff
Fenner, Bruce and Christine
Fiedler, George and Julie
Fiorato, Tony and Cathy
Fitzpatrick, Joan
Fogarty, Myrna Rae
Foote, William and Kari
Forbes, Sheila and Ockwig, Joe
Foster, Rick and Mary
Fowkes, Scott and Maria
Frazier, Jay and Alison
Gadient, Stephen and Margaret
Garrry, Dennis and Susan
Gerber, Cecilia
Gershan, Drs Bob and Jill
Glenn, Mardi
Goldberg, Barbara and Larry
Golobic, Tony and Magda

Goodner, Dale and Mary
Graff, Dave and Paula
Gralewski, Greg and Janis
Graul, Tim and Barb
Grier, Cathy
Grotz, Carl and Jennifer
Hage, Eric and Denise
Halverson, Eric and Judy
Hamersky, Dan and Jean
Hammen, Nancy
Harmon, John and Carol
Hartmann, Bob and Bonnie
Hatch, Mick and Lisa
Heeringa, Don and Coggin
Heier, Richard
Hendrix, Tom and Lisa
Henkelmann, Gary and Barbara
Herbst, Giz and Linda
Hillner, Ed and Nancy
Holub, Gregory and Mary
Horner, William and Susan
Hubbard, Kenneth and Denise
Huff, John and Alice
Hughes, Kate and Tommy
Hurtado, Geoff
Ingram, Kent and Kris
Isensee, Karen
The Jackson Harbor Inn
Jackson Harbor Soup
Jacobs, Nate
James, Allison
Janda, Melissa and Grzechowiak, Dale
Jivoff, Ray and Wright, Michael
Jome, Bob and Ruth
Kane, Terrence and Judith
Keene, John
Keller, Stephen G and Anna Marie
Kellstrom-Ray Agency, Inc.
Ketchum, Troy and Jamie
Ketterer, Margaret and Robert
Kibbee, Jo and Doug
Kidd, Karen and Joseph
Kiedrowski, John and Deborah
Kiefer, Kurt and Jone
Klatt, Mel and Shirley
Klinker, Mike and Martha
Knowles, Richard A J
Krall, Ed and Eileen
Krause, Nancy A
Krautkramer, Jim and Cindi
Kron, Paul and Karen
Krotek, Don and Brigid
Lange, Jeff and Brenda
Lawson, John and Anderson, Gail
Lee, John and Claire
Lenke, Robert and Linda
Leonard, Judie
Leporte, Lawrence and Elfriede
Liebmann, Bert and Diane
Lombardi, John and Kate
Lott, Peggy
Lurie, Matt
Lutsey, Jeff
Lyman, Kate
Mahlberg, Marilyn
Malzahn, Karen
Marcin, Marietta
Marsh, Darren and Dawn
Martin, Mark and Susan Foote-Martin
Mason, Ron and Carol
Mathewson, Randy and Karen
Mazurkiewicz, Mike and Carol
Mc Dermid, Debbie
McCain, Douglas and Patricia
Meyering, Tom and Rosinsky, Lynn
Miesbauer, Jerry and Kris
Miller, Jeff and Kim
Miller, Keith and Christine
Mizani, Keyan and Lissa
Moeller, Mark and Jennifer
Mooney, Brian and Christina
Moore, Bill and Sandy
Moore, Craig and Karen
Mortier, Daniel

2022 Financial Supporters

\$150-\$249 CONTINUED

Mueller, Ken and Judy
Mullaney, Pat and Gail
Mulvey, Gary and Carla
Murdock, Janice
Nelson, Ranny and Kris
Nelson, Rick and Patty
Nelson, Steven and Nicola
Nerenhausen, Mark and Martha
Neuman, Juliana
Newman, Peter and Castelli, Pat
Nottke, Allen and Kirtland-Nottke, Marcia
O'Hagan, Pat and Karen
Olsan, John
Olson, John and Susan
Osowski, Edward L and Maryjo
Ostrand, Madelyn
Ott, Sandie
Otto, William and Jane
Paral, Harriet
Parker, Brenda
Paul, Ralph and Mary
Payne, Don and Carolyn
Phillips, Carol
Phipps, Ken and Diane
Piehl, Rich and Ann
Pigati, Bill and Connie
Pingry, James and Mary
Pinter, Laura
Pittman, Gene and Karen
Popiel, Michael and Sharon
Popour, Lyle and Nancy
Postles, Jeff and Therese
Priske, Monte and Mary
Ralston, Doug and Nancy
Ray, Don and Kathy
Reeve, Jim and Ann
Repogle, Mark
Rhind, John and Connie
Rhoades, Steve and Carol
Richardson, J David
Rose, David and Margaret
Sanden, Jim and Kathy
Sankey, Peggy
Santilli, Bob and Gloria
Sautebin, Bruce and Chris
Scattergood, Kirk and Donna
Scheig, KT
Schoof, Jon and Trish
Schuler, Bill
Schulte, Joe and Catherine
Schultz, Dan and Paige
Schulze, Gary and Bev
Schumacher, Paul and Logerquist, Deb
Schwartz, David and Maureen
Seeborg, Sue
Seefeldt, Andy and Jillaine
The Seidel Family
Seidl, Dan and Jane
Seville, Joseph Y
Shadle, Neil and Lillie
Sherman, Jan and Art
Sherwood, Deb and Pete
Sieker, Fritz and Van Glarik, Janet
Siekman, Dianne
Simon, Tom and Kathy
Slater, Cathy and Doug
Smith, Ken and Nolde, Judy
Snyder, Trent and Amanda
Sommer, Rich and Carolyn
Sorensen, Kathy and Larry
Spangler, Mary S and Ray
Sperberg, Elizabeth Lu
Starck, Paulette and Hyde, B Jane
Steffens, Jayne

Steinle, Michael and Sarah
Stillman, Greg and Denise
Stinnett, Gary and Nancy
Stoklos, Greg
Stollenwerk, Alice
Stott, Donald
Stowell, Janice Y
Stroman, Patty
Theisen, Maria and Reda, Steve
Theisen, Mary G
Thompson, Floyd and Eileen
Tilton, Dave and Oeler, Paula
Toneys, Mike and Carol
Treleven, Joseph and Terry L
Tuch, David and Barbara
Tyson, Randy and Yvonne
Vavrus, Steve and Swanson, Susan
Viglas, Marie
Voss, William and Trudy
VoVilla, Matt and Leslie
Wagner, Kian
Wagoner, Andrea and Ruggeri, Roger
Walker, Jim and Wendy
Wallace, Carl and Darcy
Wentland, William and Lisa
White, Adam and Brigid
Wiegman, Tim and Cathy
Wienke, Jeff and Lin
Willer, Mary
Willhite, Marcia and Charles Clark
Wilson, Dennis and Jean
Wise, Bob and Nancy
Wojahn, Dennis and Karen
Wolfe, Tom and Cindy
Woodruff, Grace and Tony
Wren, Chris
Wuellner-Clark, Deb
Wyman, Anne and Glau, Rick
Youngsteadt, Duane and Leslie
Yunker, Bill and Virginia
Zehner, Diane
Zeller, Peter and Lisa
Zwicky, William

\$35-\$149

Ahrendt, Meg Fitzgerald
Aicher, Matthew
Alexander, Ann
Allen, Clarence and Owen, Maryann
Allen, David
Allen, Kevin and Jane
Almasi, John and Mary
Alt, Claudia J
Ammons, Mike and Lesley
Andera, Eileen
Anderson, Bill and Candy
Anderson, Brian and Rozan
Anderson, Jeff and Beth
Anderson, Joyce L
Anderson, Louise
Anderson, Paul and Erika
Anderson, Rob and Dona
Andrews, Doug and Mike
Andrews, Kristen
Angst, Dan and Kolb, Carolyn
Ankenbauer, Gil and Jenny
Anonymous (13)
Apfelbach, Paul
Arnold, Phil and Molly
Ascher, Cynthia
Ash, Maurie and Vicki
Asplund, Ray and Regina
Aulabaugh, Norman and Carol
Ault, Doug and Caroline
Axelrod, Michael and Roberta
Bach, John and Gorence, Patricia
Bachman, Kristen
Bacon, Lee and Inge
Banzhaf, Harry B
Barkman, Nancy
Barlament, Steve and Riley, Carolyn
Barnard, Francha
Barnstorff, John
Barta, Bud and Marilyn
Bartels, Thomas and Delores
Bartlein, Richard and Katz, Rea
Bartoli, Beth
Baruch, Eric
Bassuener, Kurt and Debra
Bastar, Brandon
Bauer, Gerard and Mary
Bauer, Tom and Mary Anne
Bauer, Tom and Melanie
Baukert, Emil and Mary
Baum, Chuck and Laurie
Baxter, James and Elizabeth
BayCare Clinic Foundation
Beadell, Jon
Beck, John
Becker, John and Amy
Beerntsen, Tom and Penny
Beeth, Michael
Beggs, Jon and Kathy
Behrens, Scott and Palimino, Esther
Bell, Mary and David
Bengston, Dirk
Bennett, Carl and Broeren, Sue
Bennett, Joan E
Bennett, Louise
Berg, Dorothy
Berg, Keith and Hedblom, Mary
Berg, W Gerald and Jane
Berggren, Janet and Ken
Berghammer, Joe and Ann
Bernier, Daniel and Susan
Berns, Kerry and Rossmessl, Joe
Bernstein, Debbie and Aaron
Bestor, William and Mary
Betz, Ronald and Christine
Bezouska, Bob and Mary
Biehl, Phil J and Grohskopf, Kevin
Birr, Lori
Bishop, Bruce and Cheryl
Block, Bob and Bonnie
Board, Paul and Cynthia
Bock, Barbara
Boehlke, Kevin and Jan
Boehnlein, Lynn and Blaser, William
Bomann, Gwen
Bonderud, Kendra and Parsons, Kenneth
Bondos, John
Borcherding, Carol and Hans
Borndahl, Ruth and William
Bossmeyer, Ann
Bourmoville, Cheryl
Bourmoville, Traci
Boyarski, David and Valerie
Boyce, Laurie and Christopher
Boyd, Nancy
Boyer, Ken and Sue
Branson, Beverly
Brehm, Phil and Judy
Bremer, Sid and Rodesch, Jerry
Julia Van Roo Bresnahan Charitable Fund Of
The Door County Community Foundation
Breving, Bob and Rosenberg, Emily
Bright, Jessica
Brodd, Judy and Mike
Brolin, Thomas
Brown, Jerry and Judy
Browne, Carolyn
Brunet, Mike and Mary Lee
Brunner, Lee
Brunswick, Scott and Lynn
Brusky, Kelly
Buchler, Mike and Patty
Budic, Peter and Ruth
Bungener, Christian
Bunker, Tom and Sally
Burda, Diana
Burkhardt, Jeffrey and Jeanine
Burlend, Warren and Nancy
Burns, Greg and Kathleen
Burruss, Peter
Byers, Cindy
Cance, John and Iris
Caple, Louis

Cardiff, Joe
Cardiff, Peggy
Carey, Renee
Carla and Ellsworth Peterson Foundation
Carlson, Juanita
Carlson, Richard and Sybil
Carpenter, John and Julie
Carstens, Peggy
Cary, Tim
Casagrande, Gary and Teri
Cascarano, David
Case, Gloria
Cashin, Paula
Casper, Al and Jill
Casper, David and Lee Ann
Chadde, Stuart and Deborah
Chan, Carlyle and Patricia
Charlton, Jane Ann
Chen, David and Patricia
Chomeau, Dave and Betty
Chopp, Jack and Claudia
Christiansen, Bruce and Laurie, Susan
Christy, Stephen and Jennifer
Clafin, Brent
Clarke-Brownstein, Krista
Clay Bay Pottery
Cochrane, Pete and Sandy
Collins, Dan and Maureen
Collins, Mary
Comeford, Chris
Conley, Bob and Lisa
Conner, Kathy
Cosgrove, Michael and Julia
Cote, Phil and Miriam
Coulon, Mae
Coulson, Andy and Jan
Covert, Ann
Craig, Evan and Paula
Cramer, Joe and Donna
Crass, Dale and Sue
Crebo, Trudy
Crocco, John and Syndi
Custer, Mitch and Sandie
Czajkowski, Ned and Carol
Czarnecki, Nancy
Dahlman, Jack and Betty Jo
Damon, Priscilla
Dannhausen, H Richard
Davies, Anne
Davis, Anne
Davis, Dale and Jan
Davis, Lynn
Davis, Michael and Buchanan, Susan
Day, John and Betty
Day, Selene
Dean, Christopher and Ellen
Deardorff, Stuart and Robyn
Degen, Mike and Ziegler, Meghan
Deggendorf, Robert and Lasee, Jennifer
DeLong, Paul and Myra
Demarest, Courtie
DeMets, Kathleen
Dennis, Abby
Desotell, Larry and Wied, Debbie
Desotelle, Bob and Lu Ann
Detert, Joyce
Detroit Harbor Ladies Aid
Devault, Carol and Kevin
DeWitt, Anne and Goldstone, Andrew
Di Iulio, Helene
Dickson, Bob and Liz
Dickson, Jay and Nancy
Dinan, Stephen and Joan
Dinesen, Niel
Dirks, Rich and Sandra
Dirst, Victoria
Dittmore, Mary and Rick
DiVincenzo, Ken and Cathy
Domiano, Steven and Stephanie
Dominiak, Rebecca
Draws, Jackie and Steve
Drey, Bob and Cynthia
Dries, Bob and Jeanne
Drost, George and Beth

Dubois, Paul and Karen
 Dude, Annie and Abern, Michael
 Dukehart, Tad and Andy
 Dunne, Richard
 Dunworth, Bob and Mary
 Durkin, Brendan and April
 Durkin, Raymond
 Durr, Jonathan
 Dwyer, Robert
 Dybas, Michael
 Eatough, Steven and Kay
Ebbott, William and Paul, Nancy
 Eckhart, Tom and Phyllis
 Edelstein, Daniel
 Egan, Richard and Anne
 Eggers, Pat and Jim
 Ehrbar, June D
 Ellis, James and Karen
 Ellsworth, James and Patti
 Elquist, Roy and Diane
 Enquist, Ida and Peggy
 Enroth, Mary
 Erbe, Julie
 Erbe, Richard H
 Erlenborn, Jim and Barb
 Erskine, Randy and Kami
 Erskine, Tim and Holly
 Esau, Tom and Andrea
Estrada, Richard E
 Evans, Tom and Pam
 Evanson, Bob
 Everhardus, Sally
 Fagiolo, Joseph and Mary
Fahrenheit, Richard and Lori
 Falck-Pedersen, Sverre and Christine
 Farber, Marcia
 Farnan, Laurie A
 Fasciotti, Hank and Mary
 Fass, Larry and Linda
 Fear, Rich and Maureen
 Feirer, Russ and Debbie
 Ferris, Ken and Beth
 Ferry, Mr and Mrs Ken and BJ
 Fields, Chuck and Carolyn
Findley, Elizabeth
 Fink, Bob and Marge
Fiore, Mark and Judy
 Fitchett, George and Judy
Flader, Bill and Joan
Flanagan, Rosa and Chambers, Nick
 Flansburg, Ron and Jean
Flatley, Tom and Maureen
 Florence, Robert and Delsart, Patti
 Ford, Deb
 Fortin, Guy and Samida, Judy
 Franceschi, Paul
 Francik, Jeffrey
 Frankenfield, Jay
 Franz, Jeff and Engs-Franz, Ruth
 Franz, Nancy
 Freeman, George and Bernie
 Frelly, Mike and Don
 Frunceck, John and Betsy
 Frunceck, Ron and Rosenwald, Margaret
 Fuller, Daniel and Lois
 Furlick, Tony and Cheryl
 Fye, Chris
 Gale, Barry and Brennan, Bernadette
Galson, Scott and Kerry
Gardner, David and Laura
 Garrity, Jerry and Lois
Garza, Ann Budzak
 Gaskell, Judith
 Gasper, Joan and Tom
 Gaston, Bud and Karen
 Gatenby, Anthony and Karin
 Gathany, Van and Hildy
 Geiger, Cheri
 Genskow, James
 Gerl, William and Maria
 Gerlach, Wayne and Linda
Gerstner, Maryanne
 Gianni, Julie
Gilbert, Robert and Julie

Gilchrist, Lynn
 Gille, Debra
 Gilson, Lynne and Schuman, Joel
 Gilson, Mike
Glatz, Margaret
 Glynn, John and Amy
Goitom, Haben
 Goodrich, Ellen
Gorbette, Diane
 Gordon, Brad and Judy
 Graham, David and Lizzie
Granchelli, Andrew and Seanna
 Grasse, Karen
 Green, Andrew and Louise
 Green, Richard and Lori
 Greene, Tad and Deb
 Griffin, Shirley
Groenfeldt, David and Annette
 Groenfeldt, Tom and Keli
 Gross, Heather
Growt, James
 Grubbs, Michael
 Gruenisen, Gary and Karen
 Guinn, Dan
Guisinger, Karen
 Habschmidt, Jim and Paula
 Hale, Mary
Halfmann, Linda
 Hamann, Jim and Jane
 Hammerberg, Kim and Lucy
 Hammerberg, Wally and Norma
 Handrich, Steve and Peggy
 Hanreddy, Jami and Joe
 Hansen, Carrie
 Hansen, Michael and Judith
 Hanson, Brett and Margaret
 Hanson, Curt and Sarah
Hanson, Danny and Danielle
 Hanson, Gretchen
 Hansotia, Marilyn
 The Harding Group, LLC
Harding, Jeff and Margaret
 Harding, Ruth and Jeff
 Harling, Lee Ann
 Harrington, Mary
 Harsh, Dr David and Ann
 Hat Head - Bob and Bonnie Spielman
 Hatch, Gillian
 Hauser, Mary
 Hauser, Sylvie
 Heath, Dar and Bill
 Hebal, Bill and Katie
 Hedquist, Pat and Susan
 Hegeman, Frederick and Kelley, Nora
 Heide, Doc and Jessup, Jody
 Heil, Dick and Carol
 Heilman, Dave and Barb
 Hein, Marilyn M
 Hellstedt, Linda
 Helm, Mary Jo
 Henderson, Barbara and Doug
 Henger, Gary and Jo Ann
 Hensge, Bill and Jane
 Herbst, James E
Herbst, Robert and Nina
 Herman, Doug
 Hersam, Larry and Joanne
 Hickey, Dennis and Lynnea
 Hilbert, Ryan and Jessa
Hilgenberg, Scott
 Hill, Fia and Murray, Howell
 Hill, Kenneth and Jeannie
 Hill, Leslie
 Hilton, Ron
Hinterland Brewery
 Hippler, Steven and Marcy
 Hitch, Gregory
 Hoefs, Mark and Kim
 Hoffman, Dave and Liz
Hoffman, Laurie
Hoffmeyer, Joe and Kate
 Hoft-March, John and Eilene
 Hogan, Michael and Geske, Janine
 Hollinger, David and Rosann

Homan, Christian and Jennifer
Honore, Michelle
 Hornick, Mark and Laurel
 Horvath, Arps and Pat
 Horwitz, Bruce and Marla
Houlton, Ross
 Howard, Phoebe
 Howe, Eric and Wegner, Kristin
 Hoy, Tracey and Pate, Lowell
 Hoyem, David and Carole
 Hubbard, Dave and Julie
 Hubbard, Rich and Rose
 Huber, Mark and Haig, Nari
Huber, Patricia and Dessart, Patrick
 Hughes, George and Sue Raye
 Hurckman, Amy
 Hutchins, Ann L
 Huth, Glenn and Dorothy
 Hutmacher, Michael and Carol
 Jacobs, Gail
 Jacobson, Tim
 Janda, Louie and Rosie
 Janes, Robert and Jillian
 Jansky, Chuck and Ann
 Jarosh, Joe and Sue
 Jarvis, Eugene and Barbara
 Jaskunas, Richard and Sharron
 Jensen, Susan
Jodlowski, Richard and Mary
 Johnson, Ann
Johnson, Erica
 Johnson, Jeff and Sue
 Johnson, John C
Johnson, Lisa
 Johnson, Marilyn G
 Johnson, Nancy and Tom
 Johnston, BJ and Linda
 Jordan, Raeona
 Julka, Vickie and Mike
 Jump, Mary Jo
 Kaercher, Susan
 Kalb, Judith
 Kalms, Walter and Michelsen, Patsy
 Kanzler, Barbara R
Kanzler, Maxx
 Kapellen, Thomas and Judith
 Karas, Debby
 Karch, Rev Katherine and Michael
 Karecki, John and Karin
 Karlo, Ken and Laurel
 Kasriel, Paul and Katy
Keadle, Lilly
 Kearney, Doug and Anne
 Keating, Julie and Terry
 Keefer, Mary and James
 Keene, James S
 Keith, Annie and Hurst, Mark
 Keith, Lloyd and Inge
 Keller, Craig and Kari
 Keller, Ed and Barbara
 Keller, Jack and Cathy
 Keller, Linda L
 Kelly, George and Zatlin, Phyllis
 Kennedy, Michael and Carol
 Kenney, Thomas and Shirley
 Kepper, Martin and Karen
Kerr, Bill and Kathryn
 Kexel, Duane and Jo Ann
 Khitsun, Andrew
 Kiehna, Dan and Pat
 Kiehna, Sue
 Kierstyn, Karen and John
 Kilty, Tamara
 Kimbell, Bob and Carolyn
 Kintopf, Alan and Linda
 Kirgues, Patricia and Roger
 Kitchens, Joel and Billett, Sherry
Klecker, Ray and Bradway, Carolyn
 Klein, Sarah
 Klensch, Nick
 Klossner, Ron and Susan
 Kluessendorf, Lucy
 Kneip, David and Ellen
 Knudsen, Polly

Knutson, Jerrold and Melinda
 Kochaver, Teresa
 Koehler Family, David and Kendall
 Koehn, Christina and Rusch, Randy
 Kohn, Bob and Alice
 Kolberg, Linda L
 Kolp, Tom and Darlene
 Konecny, Michael and Nancy
 Konkel, David
 Kopf, Angie
 Krause, Tim and Babler, Elizabeth
 Krebs, Jerry and Jean
 Kreisler, Scott and Jennifer
 Krings, Steven and Margaret
 Kroll, John and Mary Lou
 Krueger, Tom and Kim
 Krupp, Frank
 Krutek, Paul and Fran
 Krzyzanowski, Steven and Marsha
 Kubicek, Randy
 Kuepper, Karl and Jennie
 Kufrin, Bob and Lainie
 Kurtz, Gary and Nancy
 Kussart, Gene and Pauline
 Lacy, Ann and Klafka, Steven
 Lake Michigan Wind and Sun
 Lange, Doug
 Larsen, Barbara
 Larsen, Chris and Connie
 Larson, Audrey
 Larson, Don and Kayval
 Larson, James and Susan
 Larson, Marj
 Latta, Paula and Ralph
 LeClair, Linda and Michael
 Lee, Mark
 Leedy, Keith and Ursula
 Lefebvre, Terri and Campshire, Joe
 Legois, Jason, Jen, Jackson and Jameson
 Lehmann, Emmet
 Leist, Michael and Patty
 Leist, Rodney and Angela
 Lembck, Diane
 Lenahan, Brenda and Bud
 Lenius, Harlan and Sharon
 Leonard, Ralph and Barbara
 Lepkowski, Cynthia
 Lewcock, Jack
 Lewcock, Joe
 Lewis, Eric and Sheila
 Librizzi, Charles
 Lindgren, John and Elsie
 Lindh, Dana and Marsha
 Linehan, Dan and Kim
 Liss, Paul and Jan
 Lister, Jennifer
 Lohmeyer, Charles and Ellen Jane
 Londo, Cortney
 Loss, Robert and Doris
 Lovasik, Theresa
 Love, Brian and Kim
 Luchterhand, Kubet
 Lucier, Jeanne and Larry
 Luckerman, Douglas and Kaftan, Susan
 Luker, Don and Lynne
 Lundberg, Kathy
 Lundh, Christopher and Rebecca
 Lundstedt, Tom and Charli
 Lutzen, Valerie
 Lyday, Mark and Sue
 MacEachern, Mike and Alicia
 Mack, Laurie
 MacKenzie, Jennifer and Odland, Omar
 Mackenzie, Sonia
 Macomber, Caitlin and Logan
 Madel, Douglas
 Madsen, Edee
 Maguire, John
 Mahar, Michael and Shaw, Mary
 Mainwood, Barry
 Malchow, Jan and Lynn
 Mallien, Larry and Barbara
 Maras, Jeff and Amy
 Markelz, Peter and Karen

2022 Financial Supporters

\$150-\$249 CONTINUED

Maronek, James and Carole
Marquardt, Paul and Amy
 Martin, Lucy
 Martin, Max and Dee
 Masiak, Cory A
 Mason, Jeffrey and Elsie
Mast, Peter
 Mastrangelo, Jane
Mauermann, Ron and Lois
 Maxfield, Jill and Bradley
 Mayer, Irene
 Mayheu, Stephen
 McCabe, Jeff and Barb
 McCarty, Colleen
 McCluggage, Sandra
McCormick, Tim and Sheila
 McCurdy, Bob
 McDonald, Marilyn
 McDonough, Emilie
 McGee, Doug
 McGinnis, Dawn
McGoldrick, Marilyn
 McGrath, Maureen
 McKeever, Peter and Kehl, Marena
 McKeon, Judi and Tim
 McNamara, Daniel and Debby
Megan, Nancy and Joe
 Meiborg, Diane and Zacek, Roger
 Mellem, Roger and Connie
Meredith, Deb and Stiles
 Mettel, Carson and Lisa
 George L N Meyer Family Foundation
 Middendorf, Jim and Peg
 Mielke, John and Pat
 Miller, Dan and Anne
 Miller, Jack and Jane
Miller, Steve and Kathi
 Minahan, Thomas and Claire
Mirgain, Bill and Raetta
 Mitchell, Judith
 Mlodzik, Mike
Mol, Laura
 Molitor, Daniel and Tracy
 Moon, Chris and Alan
 Moran, Karen and Nicholas
 Morgan, Chris and Ed
 Morgan, David and Susan
 Morris, Bill and Ladew, Lisa
 Morris, Greg and Terry
 Moser, Alan and Dianna
 Moses, Marilyn
 Muderlak, Carol
 Mulinix, Tom and Carol
Mundigler, Annie
 Mundy, Alicia and Basil
 Murphy, Beth
 Murphy, Donna
 Murphy, Dorothea
 Murray, Rick and Leslie
 Murray, Tom and Sue
 Musiel, Tammy
 Naleway, Wally and Elaine
 Nauman, Justin and Keeley
 Neddersen, Nedd and Natalie
 Neiman, Dick and Judy
 Nelson, Bill and Kay
 Nelson, Doug and Judy
 Nelson, Jim and Judi
 Nelson, Randy and Jane
 Nelson, Rick and Barb
 Neuman, David and Smith, Miranda
 Neuman, Mike and Beth
 Neuman, Pat and Stacey
 Newbern, Karen

Newby, William and Barbara
 Newlon, Joan
 Newton, Tim and Gina
Nielsen, Paul and Connie
 Niesen, Dan and Penny
Noffke, Janice
 Norsetter, John and Rhonda
 Nowak, Peter and Jean Ann
 Ocock, Glenn
 O'Connor, Steve and Margie
 Odell, Staci
 Off The Wheel Pottery
 O'Grady, Tom and Mary
 O'Keeffe, Paul
 Olszanowski, Gene
 Ortinau, John and Marilyn
 Ortlieb, John and Judi
 Pagel, Jeep
 Palmer, Jason and Jamie
 Palmer, Patrick
 Parent, Steve and Mary
 Parsons, Robin M
Pascale, Jessica
Patel, Dawn and Kumbalek, Dale
 Patera, Ned and Ellen
 Perkins, Jay and Cushman, Marcia
 Perkovich, Tawnie
 Perley, Jeff and Julie
 Peroutka, Michael and Donna
 Peroutky, John
Perryman, Fred and Janet
 Peterman, Jim and Maggie
Peters, Henry
 Peters, Stefan and Glenna Carla and
 Ellsworth Peterson Foundation
 Peterson, Janet
 Pfarr, David and Sarah
Phillips, Edith
 Pierson, Cal and Trish
 Pike, John and Kay
 Piotrowski, Constance
Pleuss, Joan
 Ploor, Jerry and Pat
 Poehlman, Sandra L
Pohl, Emily
 Polacek, Tom and Lynn
 Polzin, Jacqueline
 Popp, James
 Porter, Bill and Anne
 Potter, Judy
 Poulton, David and Marlene
 Powis, Don and Judy
 Prindle, Peggy
Prine, Gail
 Prout, Steve and Susan
 Quigley, Mike and Mary
 Quinn, Patricia
 Quist, Kathy
 Raben, David and Schulz-Raben, Jane
 Radandt, Scott and Knippel, Bonnie
 Radue, Jane and Riopelle, Pat
Ragins, Randi and Markowski, Bob
 Rank, Steve and Jeri
 Ranney, Dave and Wright, Pat
 Ray, David
Raymond, John and Gera
 RBC Wealth Management - Door County
 Reddin, Jon and Mary
 Redwine, Julia
 Reed, Stephen D
 Regnier, Paul and Cindy
Rentsch, Mr and Mrs David
Reuter, Jason
Rice, Dale
 Richard, Dave and Carrie
 Richrath, Scott
 Rieder, John
 Riker, Terry and Gini
 Riley, Melanie
 Ripp, Dave
 Risser, Joyce
 Robertshaw, Mr and Mrs Fred
 Rockenstein, W and J
 Roenning, George and Kristi

Roever, Philip and Rebecca
 Rogers, Franklin and Elisabeth
 Rogers, Jim and Kitty
Roisum, David and Jane
 Roline, Mark and Vicki
 Rom, Patricia and Paustian, Glenn
 Romano, Dugan
 Ronvik, Rick and Tara
 Rosenthal, Becky
 Rosenthal, Deborah
 Roth Family
 Rothe, Stephen and Kathy
 Roughen, Douglas and Jane
 Rowdon, Noelle
 Rowe, Kathy
 Rowings, Jim and LaDonna
 Rowley, Gordon and Naomi
 Russe, Sarah and Irakliotis, Leo
 Rutledge, Ham and Chari
 Ryan, Bob and Sue
 Ryan, Jim and Seubert, Sherry
 Sadler, Frank and Annie
Salmi Klotz, Jason and Kristina
 Samuelson, Lane
 Sander, Bob and Marie
 Sanford, Lynda
 Santora, Gery and Jackie
 Sargent, Madeleine
 Sargent, Nancy
 Saron, Gordon and Dianne
 Sawicki, Randall
Saxton, Robert and Laurie
 Schaefer, John and Sandra
 Schartz, Christopher and Allen, Jennifer
Schmeckpeper, Jeff and Ramsey, Susan
 Schmidt, Kenneth and Rebecca
 Schmitz, William and Donna
 Schneider, Allan and Betty
 Schneider, Mike and Cindy
 Schneider, Terry
 Schoenfeld, Meredith
 Schorer, Jim and Kriss
 Schranz, Ann
Schult, William
 Schultz, Scott and Kathy
 Schulz, Eric and Laura
 Schuster, Carol
 Schwaller, Gerry
 Scott, Carol
 Scott, Ron and Sharon
 Seagren, Warren and Barbara
Searing, Al and Teri
 Searls, Noelle
 Seaver, Nona
 Secor, Richard and Alayne
 Seegers, Dale and Cynde
Seifert, Renee
 Seiler, Jeff and Sally
 Selenica, John and Jody
 Selke, Esther
 Serrahn, Janet
 Serrahn, Robin
 Shanahan, Allen and M Karen
 Shea, Shelley and Larry
 Shemanske, Susan and Wicklund, Peter
 Shereikis, Judith
 Sherman, Don
 Shoreline Charters, LLC
 Siegel, Ginny and Ross
 Sikora, David and Matzelle, James
 Simmons, Jerome
 Simons, Paul and Bonita
 Simpson, Mona B
Singer, Kenneth
 Sister Bay Bowl
 Sitte, Murray and Kathy
 Skewes, Russell and Winnett, Tedi
 Skoglund, Bob and Janet
 Skogsbakken, John and Pat
 Skydell, Louis and Eleanor
 Slater, Chris
 Slater, Janet
 Slavik, Richard and Mary
 Smith, Babs

Smith, Ed
 Smith, Gary and Dianne
 Smith, Greg and Alice
Smith, Matthew
 Smith, Sue and Lee
 Smuda, Jerald
 Sokol, George and Chrissy
Sparenberg, Steve and Roberta
Spaude, Elizabeth
 Spoerke, Robert
 Sprague, Mark
 Spude, Donald Lloyd
 Squier, Virginia and Nauman, Lorin
Stamos, Julie Allen
 Stark, Donald and Patricia
 Steiner, Bruce and Carol
 Steinke, Nancy
 Stidwell Parker, Cheryl and Lavell, Stephen
 Stoelting, Eric and Peterson, Ellen
 Stoelting, Paul and Carol
 Stonypath LLC
 Stowe, Dennis and Kathy
 Strauch, Dave and Marie
 Strelow, Larry
 Stringer, Steve
 Studebaker, David and Karen
 Studio 768 LLC
 Stultz, Jenni and Rich
Suchy, Joseph
 Sullivan, Bob and Rita
 Sullivan, Maury and Ann
 Sutter, Thomas and Janet
Sutton, Jack and Beth
 Swanson, Lewis
 Sweargin, Sherry
 Sweeney, Josh and Meredith
 Swinburn, James and Marilyn
 Takle, Miriam and Eugene
 Tanck, Glen and Lou Ann
 Tank, Rick and Kathy
 Tarczewski, Eugene and JoAnn
 Taylor, Bob and Linda
 Taylor, Charles
 Taylor, Joe
 Thiede, Teresa
 Thobaben, James and Marcy
 Thoftne, Dan
Thompson, Craig and Mary
 Thompson, John and Sheffler, Linda
 Thompson, Linda
 Thompson, Marti
 Thomsen, Catharina H
 Tibbetts, Jim and Drew
 Torkelson, Erik and Tara
 Toth, Susan and Peirce, Nancy Jane
 TR Pottery LLC
 Trebotich, Michael
Treu, Walter
 Troch, Brian and Jennifer
 Turner, Ron and Millie
Tuttle, Tom and Barb
 Ulrich, Brooke
 Umentum, Andrew
 Utley, Sarah and MacAulay, Angus
 Van De Carr, Lawrence and Janet
 Van de Ven, Dick and Anne
Van Gemert, David
 Van Houten, Bruce and Becky
Van Mun, Shari and Evenson, Mark
Vance, Brigid
 Vanderheyden, Michele
 Vass, Joe and Barbara
 Vercauteren, Kelley
 Veremis, Joanne
 Veremis, Martha
 Vermillion, David
 Virlee, Biz and Sharon
 Vogel, Mary
 Voight, Dennis and Lisa
 Vytacil, Rhea
 Waack, Nick and Heather
 Wagner, Adrian and Judy
 Wahi, Bob and Barba
 Wahlen, Jo

Waitkus, Phil and Audrey
 Waldner, David and Tolliffe, Claire
 Waldron, Steve and Laura
 Walesh, Steven
 Walsh, Bill and Adele
 Walsh, Jim and Ann
 Walsh, Melody and Holm, Randy
 Walters, Charles
 Walz, Dennis
Warntjes, Mike and Lisa
 Warth, Robert and Mary
 Wassilak, Kristin
 Webber, Dr Deborah
 Webster Jr, Charles M
 Webster, Bobbie and Cypinski, Rob
 Weidman, Richard and Mari
 Weis, Jane W
 Welch, Nancy and Plank, David
 Wellhausen, Donna
Wennerstrand, Esther
Werblow, John and Eileen
 Wessels, Bill and Trudy
 West, Tim and Sue
 Westen, Dave and Liz
 Whipple, Thomas and Christine
 White, Darrel and Dianne
 White, Lynn
 White, Nena
 Whitehead, Kathy and Jeff
 Whitelaw Gorski Family, Deb and Paul
 Whitney, Carl and Alison
 Whitney, Sue and Don
Wick, Gary and Claire
 Wieners, Kevin and Cindy Ann
 Wiers, Tom and Kate
 Williams, Clyde V and Marsha T
 Williams, Lee and Becky
 Wilpers, Michael
Wilson, George and Mary Jo
 Wilson, Luke
 Wilson, Mary E
 Wilson, Paul and Kay
 Wilson, Todd and Joan
 Wiltse, Curtis and Roxanne
Wineinger, Joyce
 Winkler, Anita
 Winkler, Lee
 Winzenz, Jerold and Karon
 Wissink, Steve and Janet
 Woelfel, Dan and Arlene
 Woelfel, David and Joy
 Woerfel, Carol
 Wolf, Terry and Debbie
 Wolst, Henk and Buttons
Wood, Emily and Amy
 Wright, Gordon and Carol
 Wulle-Dugan, Kate
 Wyandt, Dorothy
 Yonker, Jim and Candy
 Young, Dave
 Young, Matt and Kirsten Dixner
Zachariasen, Neil
 Zamora, Margarita and Green, Judith
 Zehr, Alison
 Zeldenrust, Lucy
 Zeller, Dwight and Pamela
Ziegler, Ron and Sylvi
 Zilavy, Jack and Barbara
 Ziman, Rudy and Shirley
 Zolnosky, Mike and Linda
 Zwick, Kenneth and Hollar, Carol
Zwicky, Jerry and Joan
 Zwiefelhofer, Peter and Sarah

IN-KIND DONATIONS

Bazyli Studio
 Brown, Donna and Keir, Errol
 Eagle Harbor Inn
 Ecology
 Edgewood Orchard Galleries
 Eggert, Dan
 Feirer, Russ and Debbie
 Flora Flowers
 Grasse's Grill
 Grier, Cathy
 Lengh, Robert and Carolyn
 Maltman, Elizabeth
 Nevins, Lori
 Nevins, Nancy and Logerquist, James
 Nevins, Susan
 Ottum, Jeff and Barb
 Pearl Wine Cottage
 Sail Door County
 Schrab, Geri
 Shannon, Dan and
 Hagman-Shannon, Deborah
 Shoreline Restaurant
 Sip
 The Koyen Collection
 Van Den Brandt, John and Jean
 Washington Island Ferry Line Inc.
 White Gull Inn
 Williams, Rob and Shirley

MATCHING GIFTS

Abbott Laboratories
 AmazonSmile Foundation
 American Family Insurance
 Bristol Myers Squibb
 Exelon Foundation
 Google, Inc.
 J.J. Keller Foundation, Inc
 Johnson Controls Foundation
 Kiewit Corporation
 Kimberly-Clark
 LEK Consulting
 Liberty Mutual
 Microsoft
 Nsight Wireless, LLC/DBA Cellcom
 Raytheon Technologies
 RBC Wealth Management
 SAP
 Schreiber Foods
 Thrivent Financial/Thrivent Choice
 Uline
 William Blair & Company

**Your gift deserves to
 be acknowledged.
 If we have made an
 error, please notify
 us so we may correct
 it in future listings.**

**Beginning in 2024, our donor listings will
 include donors giving \$100 and more.**

Members, Donors, and Contributors

Our Partners in Saving Nature's Forever Home...



Thank you!

Platinum sponsors



Al Johnson's
 Swedish Restaurant & Butik



dave's
 tree services inc.



rutabaga
 paddlesports

Gold sponsors



BRIAN FRISQUE
 SURVEYS INC



Wealth
 Management
 Door County



Silver sponsors



Blahnik
 Investment Group
 AN INDEPENDENT FIRM



The Ashbrooke Hotel
 Bridge Up Brewing Company
 Door County Eye Associates
 Door Landscape & Nursery
 Eagle Harbor Inn
 Ecology
 First Light Arts, Jim Perry
 The Garden Lady, Beth Coleman
 Gills Rock Pottery
 Glidden Lodge Beach Resort
 Grasse's Grill
 The Harding Group, LLC
 Impressions Printing & Graphics

Jerry's Flowers
 Meissner Landscaping
 Nicolet Bank
 RentShadowLawn.com
 Ross Estate Planning
 Smile Designs of Door County
 Sunnypoint Landscape
 Terra Cottages
 Dr Timothy Tishler, DDS
 True North Real Estate
 Wagon Trail Campground
 Washington Island Ferry Line



Door County Land Trust

Protecting Door County's Exceptional Lands and Waters...Forever

(920) 746-1359 • www.DoorCountyLandTrust.org

PO Box 65, Sturgeon Bay, WI 54235



- Sound Finances
- Ethical Conduct
- Responsible Governance
- Lasting Stewardship



Following our Trails?

Follow us on Facebook & Instagram!

Find links at **DoorCountyLandTrust.org**

"If you want to leave a truly lasting presence,
the Legacy Circle is a great place to do it because it's forever."

- Dave Callsen

See story on page 23