

# *Landings*

Journal of the Door County Land Trust

A photograph of two people, a man and a woman, hiking on a narrow dirt path through a dense forest. They are walking towards the camera, smiling. The woman on the left is wearing a white t-shirt with a rainbow and the words "Pella Weekend" and black shorts. The man on the right is wearing a grey t-shirt and dark shorts. The path is surrounded by lush green foliage and trees, with sunlight filtering through the leaves. The overall scene is peaceful and natural.

**Where the  
Wildest Things Are**



Protect the lands  
and waters you love...  
*forever.*

Our commitment to protecting Door County's  
exceptional lands and waters is forever.

You can help protect the land you love by  
making a gift that will last forever.

Make a gift through your will, trust,  
retirement accounts, or life insurance.



#### The Legacy Circle

When you inform the Door County Land Trust of your intent to make a planned gift, you will be welcomed into the Legacy Circle, a group of benefactors who have indicated that the Land Trust has been included in their estate plans.

For more information, contact Director of Charitable Giving Cinnamon Rossman or Executive Director Tom Clay at [giving@doorcountylandtrust.org](mailto:giving@doorcountylandtrust.org) or (920)746-1359.

[DoorCountyLandTrust.org/PlannedGiving](http://DoorCountyLandTrust.org/PlannedGiving)



# Door County Land Trust



#### On the cover...

Violet and Lily Seiber explore the upper loop of the Bay Shore Blufflands Nature Preserve trail, Spring 2021

#### STAFF

Executive Director  
Tom Clay

#### LAND PROTECTION

Land Protection Director  
Julie Schartner

Conservation Easement Program Manager  
Drew Reinke

Community Conservation Director  
Terrie Cooper

#### STEWARDSHIP AND RESTORATION

Land Stewardship Director  
Jesse Koyen

Land Stewardship Coordinator  
Thomas Stasiak

Ecological Restoration Assistant  
Tina Lee

#### MEMBERSHIP, DEVELOPMENT, AND OUTREACH

Director of Charitable Giving  
Cinnamon Rossman

Communications Coordinator  
Mary Van Dyke

#### ADMINISTRATION

Administrative Director  
Kristi Rice

Administrative Assistant  
Amy Dwyer

#### BOARD OF DIRECTORS

President  
Donna Hake

President-Elect  
Roy Thilly

Treasurer  
Jeff Ottum

Secretary  
Peter Deschler

Past President  
Donna DeNardo

Jack Finger  
Barbara Frank  
Deb Hagman-Shannon  
Mark Holey  
Bob Ling  
Mark Martin  
Anna Pepelnjak  
Bryan Nelson  
Gretchen Schmelzer

#### PAST BOARD MEMBERS

Nancy Aten  
Bob Barlament \*  
Jean Barrett  
Tom Blackwood  
Mike Brodd  
Dan Burke  
Fran Burton  
Dave Callsen  
Beth Coleman  
Andy Coulson  
Robert Cowles \*  
Sharon Donegan  
Frank Failing \*  
Cathy Fiorato  
Robert Forsberg  
Darlene Forsberg  
Ken Gill  
Betsy Guenzel \*  
Julie Guilette  
Chan Harris \*  
Tony Haswell  
Jon Hollingshead  
Laurel Hauser  
Jim Janning  
John Jessup  
Jim Ingwersen \*  
Jim Kinney  
Lucy Klug  
Lon Kopitzke  
Terry Lappin  
Jim Lester

Judy Lokken  
Paul Mahlberg  
Neil McCarty  
John McMahon  
Bryan Nelson  
Beverly Njaa \*  
Kevin Nordahl  
Frank Pechman \*  
Nancy Rafal  
Kate Rohrer  
Carl Scholz  
Neil Shadle  
Oliver Skrivanie  
Mary Standish  
Tim Stone  
Bill Tischler \*  
John Turner  
Kieth Van Dyke  
Rob Van Gemert  
Rob Watson  
John Wilson \*  
Kathy Wolff  
Karen Yancey  
Robert Yeoman  
Bill Yunker \*  
Virginia Yunker \*  
Elizabeth Zimmerman  
James Zimmerman \*

\* Founding Members

Office: 23 N. Fifth Avenue

Mailing: PO Box 65, Sturgeon Bay, WI 54235

Phone: (920)746-1359 • Fax: (920)746-1024

Email: [info@doorcountylandtrust.org](mailto:info@doorcountylandtrust.org)

[www.DoorCountyLandTrust.org](http://www.DoorCountyLandTrust.org)



# WHERE DO THE WILD THINGS GO WHEN WE'RE ALL OUTSIDE?

Dear Friends,

Aldo Leopold said, "There are some who can live without wild things, and some who cannot." Evidenced by the high volume of foot traffic on our nature preserves throughout the pandemic, clearly, many of us cannot live without wild things and wild places.

For so many of us, escaping our homes to explore nature has never been so vital. What does that mean for Door County Land Trust? It means we must do our level best to ensure that our visitors experience nature at its finest, but our mission extends far beyond the trails.

Door County, Wisconsin, is a place like no other. Here, where land meets water, every harbor has its distinct ecology. The number of rare plants, birds, insects, and animals found on the Door Peninsula, its islands, and surrounding waters is truly remarkable. Our land protection work does so much to preserve these natural wonders, as well as the beauty and wilderness of the county, but it is far from over.

With nearly 30 miles of rustic trails to explore and more folks than ever discovering the joys of the great outdoors, preserving Door County's wilderness areas is more important than ever. Door County's wild things deserve a place of their own, uninterrupted by our presence.

Back when I was the family birddog, my dad would remind me that there was only one animal that walked through the woods without stopping. He, of course, was referring to me.

As you explore the Door Peninsula and its surrounding islands, I ask you to please be mindful that we are visitors in nature's home. I ask that we tread carefully as we experience our incredible plant and animal communities. And I especially ask that we STOP, LOOK, and LISTEN. That is when you see and hear Door County's wildest things.

On behalf of its Board of Directors and dedicated staff, we thank you for making our work possible. We have accomplished so much, and with your continued support, we will continue working to protect and nurture wild places for wild things.



Tom Clay  
Executive Director





# Our Conservation Family Story

It takes a lot of love to protect Door County's exceptional lands and waters!  
Send your notes and stories to [giving@doorcountylandtrust.org](mailto:giving@doorcountylandtrust.org)



Thank you for preserving  
Door County's natural areas!  
- Jamie



What would we do  
w/o the wonderful Land  
Trust trails, woods, creeks,  
grasslands and lakes! We love them all! Thank you  
for all the good work you do to preserve these sacred,  
natural places for us and for future generations.  
- Judy and Ken Mueller

My favorite thing  
about Land Trust  
preserves is the fact  
that they're protected.  
- Jane Whitney

We hiked six of your preserves in  
a day and enjoyed them. Thank  
you for all the great work you do!  
- Marie Closson



Photo by Amy Hurckman



We have really enjoyed exploring local Land Trust  
properties while we were "Safer at Home."  
Thank you for that opportunity.  
- Anne and Rob Kifer

The Door County Land Trust is such a  
topnotch and amazing organization and I  
feel good about being a member. I have  
many fond memories going back to the mid  
1970's of enjoying all that Door County has  
to offer and look forward to getting back  
up there at some point when this current  
coronavirus crisis is eventually behind us.  
- Michael Holland







Heins Creek by Mitchell Pellish

I love that there are so many preserves around and the walking trails are all so fun! I love taking my toddler there to explore.  
- Cady Paschke

My favorite thing about Land Trust preserves is no cost, dogs allowed, and they give me a reason to be outside.  
- Dave Heilman



Photo by Jeff Lutsey



Photo by Collin Richter

Love the peacefulness of Door County Land Trust preserves. often don't see any other people.

- Lynn Daul

Thank you all at Door County Land Trust for working to save special lands of the county. We're delighted about the Ephraim Swamp protection for its extensive habitat!

- Ned and Natalie Nedderson

*I love the wildflowers of Land Trust nature preserves.*  
- Lyn Therese



It sure has been a privilege to experience the evolution of the Oak Road Preserve over the past decade plus. Thank you for having the vision...

Jeff Ewaskowitz



Photo by Lisa Hendrix



Photo by Sam Hoffman

Thank you for your hard work to save and preserve our natural resources. Please continue to work hard at this mission. What you are doing is very worthwhile and important.

- JB

*thank you!*

Visit [DoorCountyLandTrust.org/DailyNature](http://DoorCountyLandTrust.org/DailyNature) to submit your stories and photos for the archive!



# PROTECTING LANDS AND WATERS, PLANTS AND ANIMALS

Door County Land Trust's mission to preserve the peninsula and islands' exceptional lands and surrounding waters is unwavering. The actions we take on land (and not just the Land Trust's preservation efforts, but all of our human actions) will fundamentally affect the water in our wells, the health of our streams, lakes, and shorelines, and the beauty of this place we all love. Door County's coastal wetlands are a primary focus of our efforts because these wetlands are home to remarkable species and play a significant role in filtering both ground and surface water. During 2020, Door County Land Trust completed permanent land protection in the following places:

- 1 Land donation of cedar forest at the edge of Kellner Fen Natural Area**  
Kellner Fen Natural area is home to numerous species that could be considered the rarest of the rare precisely because they make their home in the nutrient-rich, wetland sedge mat. This 40-acre donation preserves forested wetlands and a part of the floating sedge mat at Kellner Fen while protecting water quality and important wildlife habitat.
- 2 Conservation easement along a wetland corridor, west Baileys Harbor**  
Conservation-minded landowners protected 40 acres located along the forested wetland corridor connecting Ephraim and Baileys Harbor.
- 3-5 Cedar forest wetlands, Gibraltar-Ephraim Swamp Natural Area**  
Three properties, totaling 105 acres, are now permanent additions to the protected natural area in this significant coastal wetland. Species here include rare and threatened Ram's head lady's slipper and the red shouldered hawk.
- 6-7 Coastal wetlands and forest, Big and Little Marsh State Natural Area**  
Two properties, totaling 40 acres, were added to the Big and Little Marsh State Natural Area, protecting coastal wetlands and rare species within.
- 8 Upland buffer area along coastal wetlands, Coffey Swamp Natural Area**  
This 12-acre upland forested area within the Coffey Swamp State Natural Area helps to filter water flowing into the rare coastal habitat.

**We thank the following partner organizations and agencies for their support of our current land acquisition and stewardship projects:**

U.S. Fish & Wildlife Service and The Nature Conservancy,  
Migratory Bird Joint Venture-Great Lakes Restoration  
Initiative Funds

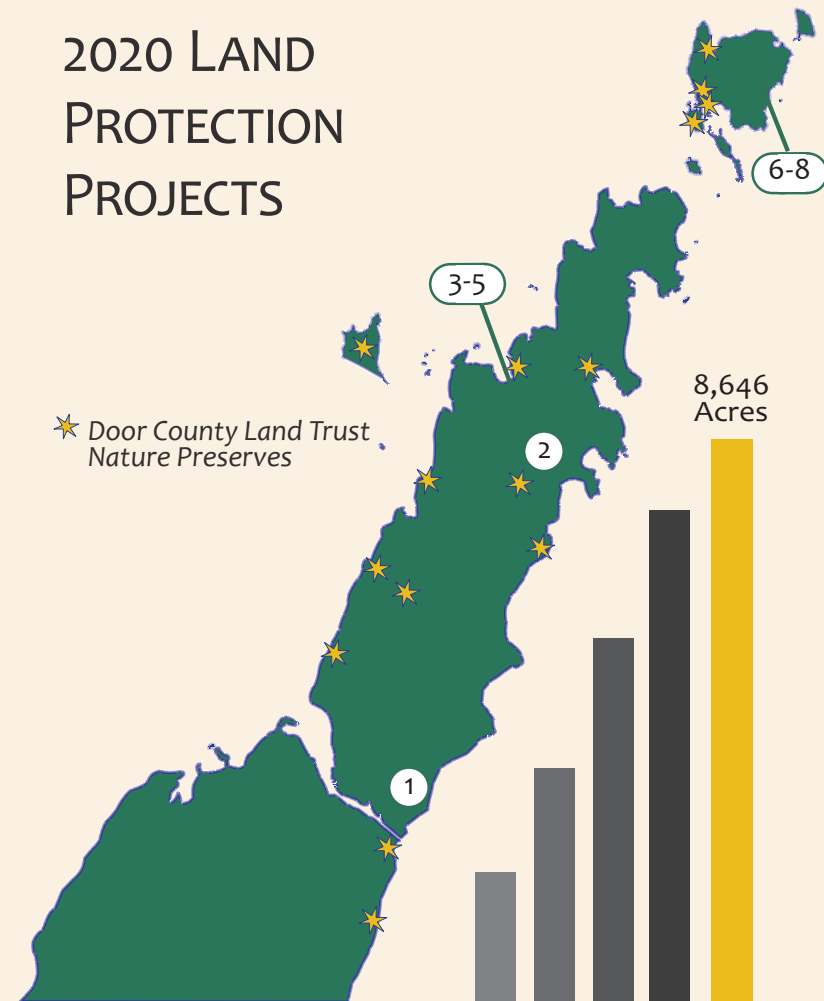
Fox River & Green Bay Natural Resource Trustee Council

County of Door, Sustain Our Great Lakes Grant

WI Department of Natural Resources, Knowles-Nelson  
Stewardship Program



## 2020 LAND PROTECTION PROJECTS



Door County Land Trust has protected 8,646 acres since our inception in 1986. Protected acreage includes lands owned and managed by the Land Trust, as well as privately owned conservation easements and lands transferred to conservation partners.

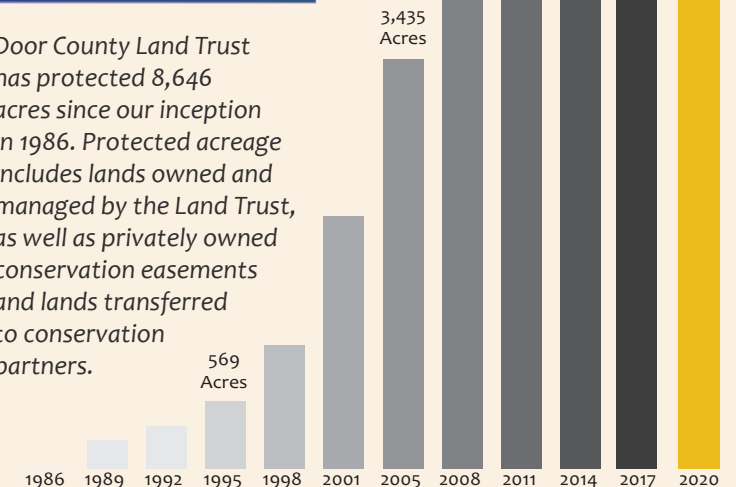


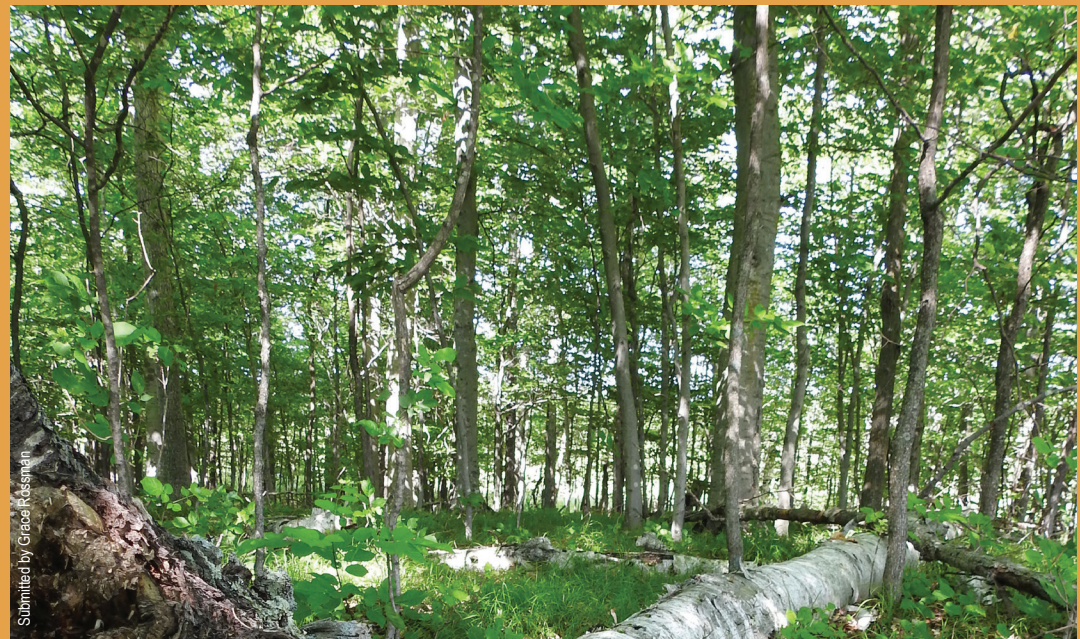




Photo by Jeff Davis

## A Legendary Gift of Land at Kellner Fen Natural Area

Just in time for Christmas, Door County Land Trust received a wonderful gift of land at the Kellner Fen Natural Area. In 2005, two parcels in the Kellner Fen area were available for sale, but Door County Land Trust didn't have the resources to purchase them at the time. Neighbors Donna and Jim Janning (Jim served on the Board of Directors at the time) acted as conservation buyers and purchased two parcels in the natural area with the intent of holding them until Door County Land Trust could purchase the land. In 2012, the Jannings sold one property to the Land Trust. In December 2020, they gifted the other 40-acre parcel to the Land Trust. Door County Land Trust wishes to thank Donna and Jim Janning, two wonderful and extraordinarily generous supporters, for helping to preserve the legendary Kellner Fen Natural Area. Read the full story, "Wild Wetlands: Legends, Landowners, and Loving Door County" at [www.DoorCountyLandTrust.org/Legends](http://www.DoorCountyLandTrust.org/Legends).



Submitted by Grace Kasper

## Connecting Protected Lands near Baileys Harbor

Door County Land Trust completed a new conservation easement agreement on lands along the western edge of the Ephraim-Baileys Harbor Swamp corridor.

Tom and Cynthia Wolfe purchased the 40-acre property in 1981 and set out to rebuild a native forest. The land was historically part of a 160-acre dairy farm, before being used for crops and then left fallow. In 1981, after the 40 acres were purchased by the Wolfe family, they began to remove invasive species and replace them with native trees and shrubs. Since then, the Wolfes have planted hundreds of trees annually and will continue to expand the forest by planting tamarack and white willow trees this year. As the forest matures and grows, it provides habitat for native wildlife and improves both water and air quality.

About the Wolfe's desire to protect and reforest their land to help combat development and climate change, Tom said, "With climate change accelerating, conservation of nature must also accelerate to try to mitigate its deleterious effects. To quote fellow Wisconsinite John Muir, 'Anything that is dollarable is not safe' – meaning not safe from development."

One corner of the Wolfe conservation easement connects to the internationally designated "Door Peninsula Coastal Wetlands," an extensive wetland complex of regional and global importance. The Wolfe conservation easement will help to preserve open space and wildlife habitat, while protecting the ecological integrity of the connected landscapes.





Photo by Joe Taylor

## Gibraltar-Ephraim Swamp Natural Area: Creating a Coastal Sanctuary

Door County's coastal wetlands are among the highest priorities for land protection on Lake Michigan, and for good reason. Coastal wetlands like the Gibraltar-Ephraim Swamp Natural Area provide enormous benefit to the water quality of Lake Michigan. These coastal wetlands provide filtration as rain and snowmelt travel from upland areas, through the wetlands, and eventually into Eagle Harbor and Green Bay.

Not surprisingly, Door County is home to a number of coastal wetlands that provide these significant benefits to Lake Michigan and, with its position along Green Bay waters, Gibraltar-Ephraim Swamp has the added benefit of providing habitat for a number of rare species too. Its forest of northern white cedar, tamarack, and eastern white spruce attract a number of rare and threatened boreal birds, as well as the Red-shouldered hawk. Even the federally endangered Hine's emerald dragonfly has been sighted foraging in the area. The threatened Ram's head lady's slipper orchid is also found here.

Protecting the key lands both in and around Gibraltar-Ephraim Swamp—nearly 1,600 acres—is among Door County Land Trust's priorities. Over the past few years, a combination of diligent land priority planning, outreach to local landowners, and strong partnerships with state

and federal funders has resulted in the protection of 393 acres, including our 2020 land protection efforts: the addition of three parcels totaling 105 acres!

Partial funding of the purchase of these conservation lands was provided by two grant awards from the Great Lakes Restoration Initiative (GLRI) Migratory Bird Joint Venture with one of these grant awards applied for in partnership and administered by The Nature Conservancy and additional contributions from Knowles-Nelson Stewardship Program, Fox River and Green Bay Natural Resource Trustee Council and the Bock Foundation.

Funding for additional acquisition costs and the long-term care and management of these lands is provided by Land Trust members like you. Thank you!

Video of the Gibraltar-Ephraim Swamp Natural Area project is available online at [www.DoorCountyLandTrust.org/GESwamp](http://www.DoorCountyLandTrust.org/GESwamp).

*Right: DCLT Land Stewardship Program Director Jesse Koyen; WI-DNR Knowles-Nelson Nonprofit Grant Manager Pam Foster-Felt, WI-DNR Community Services Specialist Faith Murray, and DCLT Land Protection Director Julie Schartner tour Gibraltar-Ephraim Swamp Natural Area; Wetlands at the heart of the swamp*



Photo by Terrie Cooper



Photo by Channah Rossman





Photo by Joe Taylor

## Washington Island: Coastal Wetlands at the Big and Little Marsh and Coffey Swamp State Natural Areas

Coffey Swamp State Natural Area stretches across the northern third of Washington Island, and the Big and Little Marsh State Natural Area parallels the Island's eastern shoreline. Each of these extraordinary natural areas is listed by the Wisconsin Department of Natural Resources (WI-DNR) as a globally significant conservation area in the Wisconsin Wildlife Action Plan (2015-2025). During 2020, Door County Land Trust protected 40 acres at Big and Little Marsh and 12 acres at Coffey Swamp.

Protection of these coastal wetlands helps to preserve the integrity of North America's Great Lakes ecosystem. These natural areas support habitat for the federally threatened dwarf lake iris, as well as more than 30 bird species listed as rare, threatened or of special concern. Both areas are considered coastal wetlands and each benefits water quality and fish by preventing pollution and runoff into the Great Lakes.

Additionally, the newly protected land at Big and Little Marsh protects ground water for critical breeding habitat used by the federally endangered Hine's emerald dragonfly and connects other conservation land that lies to the east and west, forming a protected corridor of high-quality forest and wetland habitat. Permanent protection of connected natural lands helps to preserve the health of forests and promotes biodiversity by ensuring wildlife the ability to move freely between protected habitats.

Funding to protect these lands is provided by Wisconsin's Knowles-Nelson Stewardship Program and the Fox River and Green Bay Natural Resource Trustee Council. The permanent protection and care of these properties was made possible through a bequest from the estate of Barbara Mendijs, as well as support from Door County Land Trust members.



Photo by Julie Scharfner

## Southern Door Creek Beds and Watersheds

The habitat surrounding Southern Door's creek beds and watersheds plays a critical role in the ecosystem of Green Bay. The waters around Sawyer Harbor and Little Sturgeon Bay are critical sites for fish spawning and provide habitat for young fry and mature fish. Land protection in and around Southern Door's watersheds provide filtration of sediments before rain and runoff enter Green Bay. According to a recent report from the Lower Fox River and Green Bay Natural Resource Trustees Natural Resource Damage Assessment, "In this area, poor water quality has compromised musky eggs in Sawyer Harbor, while natural walleye reproduction has disappeared from Little Sturgeon Bay. The land acquisition would protect habitat for Green Bay fisheries, such as musky and walleye, as well as other fish that spawn in both areas, including smallmouth bass, largemouth bass, northern pike, and yellow perch."

The Door County Land Trust is working with Southern Door landowners to conserve priority conservation lands focusing on the protection of stream corridors, wetlands, and shoreline areas that contribute to the health of the waters and fisheries of Green Bay. With the support of grant funding from the Lower Fox River and Green Bay Natural Resource Trustees, we aim to implement a targeted conservation approach to protect Southern Door creeks and watersheds.



# CARING FOR THE LAND

## Pond Restoration at Grand View Scenic Overlook and Park

One of Door County's most iconic views, the 'Grand View' from the top of Ellison Bay Bluff, was protected through a partnership project in 2012—and that partnership continues strongly today. When the opportunity to protect the property arose, Door County Land Trust helped raise the funds to purchase the land. Once permanently protected, ownership of the land was transferred to the Township of Liberty Grove to be maintained as a town park. The partnership ensured that the 'Grand View' would never be obstructed and would remain accessible to all—but it also ensured that habitat for wildlife would be improved.

During 2020, restoration efforts focused on caring for the prairie plants installed the previous year and introducing native shrubs around the ponds at the base of the hill. This project is part of a larger effort to improve habitat for birds and pollinators and to restore biodiversity to this once-manicured area. The newly planted shrubs, five different species, will provide avian nesting habitat and shelter around the ponds. The plants help to filter rain and melting snow before it enters the ponds, ensuring healthy habitat for amphibians too!

The restoration is supported through the US Fish and wildlife Service who donated seeds and assisted with planting. Dan Collins and Nancy Aten of Landscapes of Place assisted with the initial restoration planting. Shrubs were provided by Door Landscape & Nursery and through a donation by Land Trust Board member Mark Holey.

## Get to Know Your Invasive Plants: Garlic Mustard

Garlic mustard is an invasive species that packs quite the punch considering its diminutive size. Standing less than 18" tall when full grown, this plant has devised a few strategies to knock out its competitors before they can even put up a fight. Garlic mustard sprouts up early in the spring, before other plants break their winter dormancy. It will quickly leaf out and shade any other seedlings. And, it has a secret weapon within its roots: a toxin that can disrupt fungi, and the trees and plants that rely on these fungi in symbiotic relationships. Where garlic

mustard grows, it creates a monoculture in which tree and plant seedlings just can't compete. What's more, all these effects are exacerbated as the climate changes. Garlic mustard is adapting faster than native plants.

Door County Land Trust is battling garlic mustard at several nature preserves. During 2020, significant work was continued at Heins Creek Nature Preserve and Richter Community Forest Nature Preserve where removing this invasive species will ultimately help restore diversity to the forest.

**Invasive garlic mustard, *Alliaria petiolata***



Photo by Jesse Koenig



At left, a typical Pitcher's dune thistle takes 5-7 years to reach maturity and bloom. Once seeds are dispersed, the plant dies. Mature thistle leaves are dead and, in the open sand, the tiny leaves and light green foliage of younger thistle plants is barely visible. Walking in dune thistle habitat can easily kill off seedlings and spread invasive seeds.

## Stay off the Dunes! Protect the Pitcher's Dune Thistle

Sturgeon Bay Ship Canal Nature Preserve is home to a healthy list of rare plants and animals, but among the rarest is the federally threatened Pitcher's dune thistle. This plant is found only in sandy dunes around Lake Michigan—the very same places that we humans like to bask on the beaches. Habitat loss from development and the recent high lake water levels, combined with invasive weevils, make healthy populations of this plant ever more difficult to find. At Sturgeon Bay Ship Canal the Pitcher's dune thistle population is permanently protected from development, but still faces the threat of weevils and erosion of the dunes where it grows.

In a partnership with Chicago Botanic Garden, Door County Land Trust helped to collect and propagate seeds of plants that provide a pollinator buffet after invasive species are removed. The partnership aims to restore Pitcher's dune thistle at the nature preserve, but also to work with interested shoreline landowners to improve the habitat on their land for the coastal dune community, including Pitcher's dune thistle. Look for these fuzzy thistles on your property and contact us to learn more about the project.

Funding for this project is provided in part by the Great Lakes Restoration Initiative through US Fish and Wildlife Service's Great Lakes Coastal Program.

## Brush Your Boots! Keep Exotic Hitchhikers Off the Trails

Door County sees some truly exotic hitchhikers from around the world—and they're the kind that settle in and make themselves right at home! No, we're not talking about your second cousin coming to visit. We're talking about the weed seeds that can be carried from one destination to another on the soles of shoes, on the fur of a pet, or clinging to clothing. In an effort to keep these weed seeds from ever making it onto the trails, more than 20 new boot-brush stations were installed at the trailheads of Door County Land Trust nature preserves over the spring and summer of 2020.

Look for these new boot-brush stations the next time you hit the trails, and take a moment to give them some good use. Each station holds a different sign noting the exotic invasive species that are a problem at that preserve, as each nature preserve is a little different. That's a good reason to brush your boots before and after every hike.



Photo by Julie Schermer



Photo by Mary Van Dyke



Photo by Gretchen Blumkin



Photo by Thomas Szasak



Photo by Alisa Lohman



Photo by Lisa Hendrix



# STRONGER TOGETHER: COMMUNITY CONSERVATION

## Safe Distancing Found on Land Trust Trails

The numbers are in: During 2020, in nearly every way imaginable, more people were outside. More state park stickers were sold than ever before. Sales of fishing and hunting licenses were up. Phone apps for birding and plant identification were downloaded at a record pace. Counters on bike trails marked near-double use over the previous year. And in Door County? Well, cars lined the sides of the roads once parking lots filled. No doubt, Door County Land Trust nature preserves were busier than ever as people sought ways to safely distance and get outside.

Over the past year, we received so many notes of appreciation from folks who enjoyed time spent on our trails! We've shared some of them on the first few pages of this newsletter, but there just isn't room for the countless comments that poured in. Whether trekking solo or meeting safely with friends and family, for exercise or a chance to commune with nature, we heard words of gratitude. Many recognized that these places are protected thanks to members like you, so we want to pass that recognition for safe outdoor places right to you—the members who helped protect these remarkable nature preserves.

**From one member to another, thank you!**



Photo by Cinnamon Roseman



Photo by Breanna Butler



Photo by Karla Mertens



## Stuck on a Great Idea: Magnets for Members!

A great idea struck photographer David Heilman in the fall of 2020. What if he were to donate photo magnets—one of his best selling photo products—to help support the Land Trust? Could it benefit conservation in some way? Absolutely! The Land Trust began offering this incentive to prompt members to increase their donation by \$50 or more. The Land Trust ended up giving away nearly 500 magnets in December and January. All that equals a lot of love for Door County Land Trust—and more land protected in the future.

The Land Trust will continue to give away magnets in 2021. When you make your membership renewal this year, increase your annual donation by \$50 or more, and you'll receive a magnet to keep your fridge happy, as well as all the satisfaction of knowing you've helped protect more of the peninsula and islands that we all love!







## Nature Notes Calendar: 365 Days of Science and Beauty

As we began planning last year's events, it became abundantly clear that there were few events that could remain the same. In fact, the only things we knew for sure were that the flowers would bloom, the migratory birds would return, and the Hine's emerald dragonflies would emerge. Aren't these just exactly the kind of events that we all look forward to anyway?

The first-ever Door County Land Trust phenology calendar included 18 months of nature's events so members like you would have something to remember Door County by—no matter where you are. Compiling the calendar was a group effort that involved many staff members, experts and partners from other conservation organizations, and some incredible 'citizen scientists' who have been tracking cyclical natural events for years.

The result is a work of art that weaves beautiful photographs taken by Land Trust members and volunteers with daily facts about birds, blooms, insects, animals, historic events, and more.

**Send in your photos for the next calendar!** Door County Land Trust will produce a 2022 calendar this fall and will accept photo submissions until September 15. Upload your photo submissions at [www.DoorCountyLandTrust.org/photos](http://www.DoorCountyLandTrust.org/photos).

**A calendar for every member!** Consider renewing your membership by October 31st this year in order to receive your calendar before January 1, 2022. Your membership must be current to receive a calendar.



## Dining for a Cause... Choose Your Own Adventure!

Gosh, we sure miss seeing members! But we've put events on hold til the end of 2021. In lieu of our regular hikes and events, we strongly encourage you to make your own adventures! To recreate a Land Trust experience, take a hike with friends, get together for a locally-harvested meal, or simply call a fellow member just to say, "hello." Wherever your adventures lead you, be inspired by the great places that Land Trust members helped to protect over the past 35 years.

Let us help connect you with fellow members or plan your own adventure to benefit the Land Trust. Contact Director of Charitable Giving Cinnamon Rossman at (920) 746-1359 or [giving@doorcountylandtrust.org](mailto:giving@doorcountylandtrust.org).



## Benefit Concert with Last Man Standing Friday, July 9, 7pm • \$20 tickets

Purchase tickets by calling Woodwalk Gallery at (920) 629-4877

Classic and not-so-classic bluegrass music, Door County style. Their toe-tapping, danceable, catchy music is a joy to listen to! Each year, *Last Man Standing* has provided live music to benefit the Land Trust, whether at our volunteer appreciation parties or as a benefit concert. This year, *Last Man Standing* will donate all proceeds from this concert to benefit Door County Land Trust's land protection and stewardship efforts!



## 2020 Financial Report

As a community service 501(c)(3) organization, the Door County Land Trust depends on the generosity and contributions from members and supporters to finance our conservation work. 2020 audited financial statements and our Federal Form 990 are available by request.

### Net assets as of December 31, 2020 (pending audit)

Stewardship Endowment Fund <sup>1</sup>	\$	3,900,838
Land Acquisition Fund <sup>2</sup>	\$	437,383
Legal Defense Fund <sup>3</sup>	\$	249,876
Cash restricted for current land acquisition projects	\$	414,994
Working capital and operating reserve	\$	923,794
Investment in property and equipment	\$	177,617
Net assets excluding land	\$	6,104,502
Value (at time of purchase) of land held for conservation	\$	27,645,860
<b>TOTAL NET ASSETS</b>	<b>\$</b>	<b>33,750,362</b>
Change in net assets versus 2019	\$	1,300,268

<sup>1 2 3</sup> The Stewardship Endowment Fund, Land Acquisition Fund, and the Legal Defense Fund consist of donor contributions restricted by the donor, or restricted or designated by the Board of Directors.

<sup>1</sup> The Stewardship Endowment Fund provides annual revenue to the Land Trust to care for its lands, while at the same time growing to provide sustained funding to fulfill the obligation of caring for the lands long into the future.

<sup>2</sup> The Land Acquisition Fund provides a ready source of dollars to respond quickly to opportunities to purchase and protect properties of high ecological and scenic value. The fund supports the acquisition of lands at times when grant funding is not available or grant funding is delayed.

<sup>3</sup> The Legal Defense Fund provides funding as needed for use in defending and enforcing Land Trust conservation easement agreements and in resolving encroachments or vandalism issues that may arise on protected properties.

### Stewardship Endowment Fund Trustees

The Endowment is managed by Legacy Private Trust Company and is governed by the following Board of Trustees:

Peter Deschler	Jim Lester	Bill Schaars
Tony Fiorato	Bob Ling	

### Stony Creek, Southern Door

The Door County Land Trust is working with Southern Door landowners to conserve priority conservation lands focusing on the protection of stream corridors, wetlands, and shoreline areas that contribute to the health of the waters and fisheries of Green Bay and Lake Michigan. Stony Creek is home to river otters and spawning fish. The forest along the river offers critical habitat for nesting and migratory birds, as well as important water filtration that helps to minimize nutrient runoff as waters flow into Lake Michigan.

Photo by Julie Schmitt

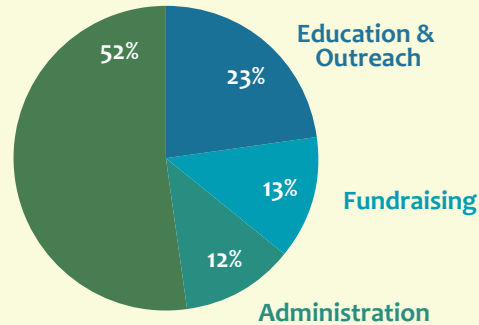




## 2020 Annual Operating Revenue and Expenses

### USES OF FUNDS

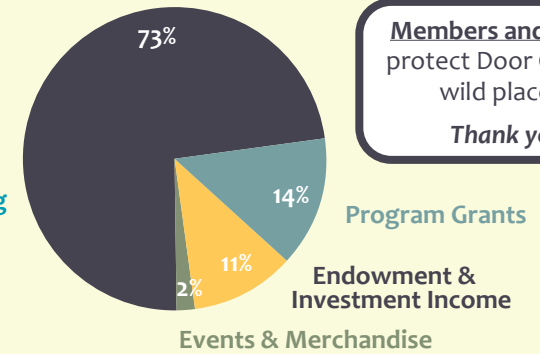
Land Stewardship & Protection Costs



The Door County Land Trust spent \$1,032,673 on the activities listed above.

### SOURCES OF FUNDS

Donor & Member Contributions



The Door County Land Trust raised \$1,193,472 from the sources listed above.

Did you know that your contributions were so important?

**Members and donors** protect Door County's wild places!!!

**Thank you!**

Door County Land Trust's annual operating budget includes the programs, supplies, and administrative costs to carry out the mission to protect and care for our protected lands. From funding simple things like light bulbs to carrying out landscape-wide land restoration, the largest portion of our annual revenue comes from donor and member contributions. More than 1,800 households and individuals contributed to the mission to protect and care for Door County's exceptional lands and waters in 2020. **Thank you!**

Door County Land Trust maintains an operating reserve fund designed to sustain core operations and uphold our commitment to land protection for perpetuity. \$160,799 was invested in the operating reserve fund to cover potential future conservation obligations.

## 2020 Land Acquisitions *(Purchases, Bargain Sales, and Donations)*

### SOURCES OF FUNDS FOR LAND ACQUISITIONS COMPLETED IN 2020

**In 2020, \$798,250 was expended to acquire 7 properties, totaling 197 acres!**

84%

Funded by Land Protection Grants

16%

Funded by Donor and Member Contributions

As you might imagine, land conservation can be a very expensive endeavor. Three separate sources help the Door County Land Trust establish new nature preserves or expand existing preserves. In most years, the largest source of funds for the Door County Land Trust's acquisitions are obtained through grants that we applied for and secured from state, federal, and other agencies. During 2020, we received one land donation from generous property owners. Donations of property may be used as a match for leveraging grant funds.





*This photo, Kangaroo Lake, as seen from above Lake Michigan, is one of twenty aerielscape photographs by Paul M. Lurie featured in the new book, "A Shoreline at the Edge: Door County's Lakeside Forests and Wetlands." Through a generous donation from Paul Lurie, Door County Land Trust is making the book available for free to the community in an effort to inspire a greater love of the peninsula's wilderness and to propel further conservation efforts across the peninsula, its islands, and surrounding waters.*



# Shoreline at the Edge: Door County's Lakeside Forests and Wetlands

Door County's beauty inspires the imagination. In a new book, titled "A Shoreline at the Edge: Door County's Lakeside Forests and Wetlands," photographer Paul M. Lurie captures the imagination with a series of stunning aerial photographs taken from Lake Michigan. His photographs show the transition from forest to farm field, from wilderness to development. And, upon closer look, they show where Door County's dark conifer boreal forests hug the cooler climate areas of the shoreline.

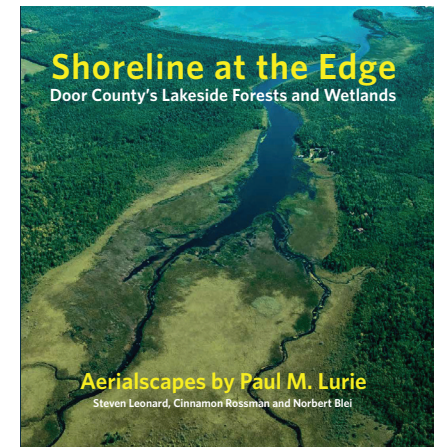
Paul Lurie's photographs beg the question of how to protect the uniqueness of Door County as we lose wilderness habitat to development and as our boreal forests are visibly transitioning in response to climate change. Former executive director of The Ridges Sanctuary, Steve Leonard, and Door County Land Trust's director of charitable giving, Cinnamon Rossman, co-authored the narrative and captions that accompany Paul Lurie's photographs. They narrate Lurie's photographs with history that spans from geologic times to present, adding ecological and scientific facts throughout.

The final result is a book that will deepen an appreciation for the Door Peninsula, its islands, and surrounding waters. Ultimately, it serves as a call to action—for the preservation of Door County's remarkable wilderness and forests, and for taking bold action against climate change that threatens these lands.

Photographer Paul Lurie, along with co-authors Leonard and Rossman, created the book as a volunteer effort to help further land conservation across the peninsula. Thanks to a significant contribution from Paul Lurie and a grant from a private foundation, Door County Land Trust is able to offer

*Hardcover with dust jacket,  
105 pages, 10 ¼" x 11 ¼" x ¾"*

*Copyright 2021, Published by  
Door County Land Trust*



the book to the general public upon request, at no charge, except \$7.00 shipping and handling.

**Reserve your free copy today!** To reserve a book, please visit [www.DoorCountyLandTrust.org/Book](http://www.DoorCountyLandTrust.org/Book) or call the Door County Land Trust at (920) 746-1359. A limited number of books are available and requests will be fulfilled on a first-come, first-serve basis. One book per household, please. Additional books may be purchased through The Ridges Sanctuary's Nature Store and local bookstores.

**Publishing Events** In partnership with WriteOn Door County and the Climate Change Coalition, Door County Land Trust will host readings, Q&A, and signing with the photographer and authors.

**Tuesday, August 10, 4-6pm, Woodwalk Gallery, Egg Harbor**  
**Tuesday, August 17, 4-6pm WriteOn Door County, Juddville**  
For more information, visit [www.DoorCountyLandTrust.org/Book](http://www.DoorCountyLandTrust.org/Book).

*The writing, creation, and publication of this book is thanks to the generosity of Paul Lurie. Book fulfillment services are generously donated by the volunteer program of Sunshine Resources, a Sturgeon Bay non-profit organization providing services and employment to Door County's special needs residents and their families.*





# Protect the lands and waters you love... forever.

## Plan a gift through your will, trust, retirement accounts or life insurance

The future of the peninsula and islands we love may be uncertain, but you can depend on the Door County Land Trust to protect the exceptional lands and waters we all love.

With your help, we can make a lasting difference for Door County's open spaces and wild places. Together, we can pass on a legacy of protected lands.

Consider making a gift that can last forever. Designate the Door County Land Trust as the beneficiary of your life insurance or retirement plan, or include a bequest provision in your will or trust.

## Planning your gift today can make a lasting difference in Door County tomorrow...and forever.

Give us a call to start the conversation. No matter the size of your gift, we can help you create your legacy. Call Director of Charitable Giving Cinnamon Rossman or Executive Director Tom Clay at (920) 746-1359.

*Door County Land Trust is accredited by the Land Trust Accreditation Commission. Their validation confirms Door County Land Trust operations meet the standards of sound finances, ethical conduct, responsible governance, and lasting stewardship.*

## LEGACY CIRCLE MEMBERS

Abbott, Ann  
Anderson, Bob and Dorothy  
Anderson, Robert C  
Anonymous (8)  
Aten, Nancy and Collins, Dan  
Aufrere-Sebetic, Jacqueline  
Aulabaugh, Norman and Carol  
Baer, Charles and Stephanie  
Barlament, Steve and Carolyn  
Barrett, Jean and Nevalainen, David  
Beadell, Priscilla and Anthony  
Bell, Hugh and Joyce  
Blankenburg, Ralph and Kathy  
Blanton, James and Barbara  
Burkhardt, Richard and Dorothy  
Burton, Frances and Paul  
Bussard, Ken  
Cady, Bonnie  
CaJacob, Claire and DuMont, Debra  
Callsen, Dave and Vonnie  
Carpenter, Julie and John  
Cermak, Ardis  
Coleman, Beth and Wessel, Curt  
Conroy, Peter and Beverly Ann  
Cooper, Terrie  
Cosgrove, Michael and Julia  
Cross, Jerry and Steffens, Jayne

D'Abbraccio, Deanna and Morgan, Barbara  
**Davis, Rob**  
Deschler, Peter and Gina  
Diekman, Marianne  
Dimberg, Lyn  
Donegan, Sharon  
Ellis, Karen and James  
Ficken, Millicent S  
Friedl, Mike and Carolyn  
Fundingsland, Donald W  
Gerrits, Lloyd R and Dorothy J  
Hake, Donna  
Hansotia, Phil and Marilyn  
**Harrington, Richard and Mary**  
Herndon, Carol and Richard  
Heveran, Edward and Janet  
Hoehn, James L and Goldberg, Nancy J  
Holm, Barbara  
Hunter, Fran and Laatsch, Bill  
Jacobson, Rod and Jean  
Klepp, Dottie  
Klug, Karl and Lucy  
Knox, Robert W and Schlott, Kathryn E  
Kokes, Dan and Jeannie  
Koutnik, Dr Ed and Cindy  
Kress, Billie

*The Door County Land Trust thanks the following benefactors who have indicated that the Land Trust has been included in their estate plans.*

Larson, Richard and Roberta  
Leavitt, Mitch and Jean  
Lester, Jim and Barbee  
Licata, Tony and Judy  
Lisle, Tom and Bev  
Luker, Donald R  
Lukes, Charlotte  
Madden, Michael and Barbara  
**Mendius, Barbara**  
**Meyer, Gertrud**  
Miller, Ed and Sandy  
Miller, Kenneth and Glenda  
Moline, Ronald and Barbara  
Morris, Greg and Terry  
Nowak, Peter and Jean Ann  
Olsen, Lawrence and Lynn  
Ottum, Barb and Jeff  
Perry, Kerry  
Propsom, Rich and Bruesch, Jane  
Queenen, Karen and Allen  
Schultz, Craig and Sandy  
Schwengel, Jim and Judy  
Seagard, Tom and Kozma, Brigitte  
Seville, Mr and Mrs Joseph Y  
Sherman, Gerald and Lipp, Carolyn  
Silberman, Ann Monteith  
Standish, Michael and Mary

Swanson, Deanna and John  
Traven, Lee  
Turner, John and Judy  
Turrieff, Tom  
Van Den Brandt, John and Jean  
Vanden Houten, Dale and Scott, Richard  
Vervoren, Thora  
Walwark, James and Polly  
Warner, David and Rose  
Watson, Rob and Picken, Judy  
**Wick, Tim and Cindy**  
Wilson, John and Karen  
Wissink, Steve and Janet  
Wittenkeller, Al and Judy  
Yancey, John and Karen  
Yeast, Barbara and Gary  
Yeomans, Robert and Charlotte  
Youell, Sylvia  
Zehr, Alison

New members of the Legacy Circle are listed in **bold** type.

*Have you included the Land Trust in your planned giving? If so, please inform of us of your intent so we may thank you and include you in our Legacy Circle listing.*



## Celebrating A Life Lived Deliberately and Generously

*Stories from a conversation with Mary Lee Greenfield and Jeannie Kokes, in memory of their sister Barbara Mendius. Door County Land Trust was one of several conservation organizations selected by Barbara to receive a bequest to support her love of the environment.*

In the late 1920s, young Martha Mendius, who was Jeannie and Mary Lee's aunt, had the great fortune to accompany her friend Louise Wagner Erickson to Washington Island. Years later, Louise would become an avid birder and conservationist who helped to protect the Jackson Harbor Ridges Preserve. In their teenage years they were avid swimmers and tennis players. Martha fell instantly in love with Washington Island. For more than five generations, the Mendius clan spent several weeks each summer on the island, staying at West Harbor Resort when it was first owned by the Sorensens, and then in 1947, by the Gibsons.

Jeannie, recalling memories of their family vacations said, "The island became something we all loved—our home away from home."

Barbara, or Barby as family called her, was the baby of the family. Mary Lee recalled one summer visit in 1952 when Barby was just 2 ½ years old. Her parents, Lee and Ed, were visiting on Gibson's porch on a beautiful July day when Mary Lee, in charge of her siblings, realized Barby had disappeared. Jeannie and her brother Larry did not know where she was, but soon she was found. She had wandered off in her little blue corduroy jumper and was near the pier picking wild raspberries.

"That was the last summer she was able to walk." That fall, Barby contracted polio and spent her third year in an iron lung to help her breathe and stay alive. Over the next two decades, the family was able to come to the island every summer except when Barby was undergoing medical treatments to help her remain as mobile as possible.



*Barb Mendius, ca. 1980*

In 1969, Ed Mendius built the family cottage on West Harbor of Washington Island. He was looking for a place where Barby could have wheelchair access to the water and was close to West Harbor Resort. The family was committed to creating a normal life for Barby and supported her independence and love of nature. Ed planted a raspberry patch for Barby and raspberries soon became her symbol. Later, when she moved across the country to Portland, Oregon, Barby planted raspberries among the native plants surrounding her home.

In an essay titled, "Out of Reach", published in The Sun magazine in 2004, Barby wrote about her experience being in a wheel chair where often her access to things and experiences was limited. Barby wrote, "I remember virtually nothing of the time when my body was normal, and I'm sure this has made adapting to wheelchair life much easier. I was one of those fiercely independent polio survivors: went to public school, college, graduate school; drove convertibles for two decades; lived alone; moved across the country by myself; built a house and grew a garden around it."

Barby's love of the outdoors and her formal education in biology and neuroscience led to a remarkable career and commitment to advance science. Underneath it all, her love of Washington Island never waned. When asked about conversations the sisters had about the island, Mary Lee said, "We were all saddened by areas of the island that we used to go to that are now in private hands."

Jeannie describes Barby's passion for the environment as that of a 'severe' conservationist: recycling bins for zero to #9, carefully evaluating what she bought and each choice in her life. Her Portland home, which she designed using recycled windows and doors, was awarded a Silver Star by the Portland Oregon Audubon Society for its native biodiversity that attracted birds, insects, and wildlife. "Barby was committed to making a positive impact on earth," said Jeannie. "She lived what she believed. Barby put her own funds into lands that could be preserved for future generations."

Door County Land Trust is pleased to honor Barby's memory and generosity with a legacy of permanently protected and well-cared for lands on Washington Island. Barby's generosity helped to support recent land purchases on Washington Island, as well as the long-term care of all the Land Trust's Washington Island nature preserves. Barby's Legacy Circle gift ensures that everyone may experience the wonders of the island and its special places.



*From left, Helene Mendius, Martha Mendius, and Tommy Mendius (far right) playing tennis, West Harbor Resort, 1931*



*Barby Mendius and Frank Gibson at Gibson's West Harbor Resort, ca. 1955*



# BEQUESTS, MEMORIALS, AND TRIBUTES

Gifts received between January 1, 2020 and February 15, 2021

## BEQUESTS

**Larson, Richard and Roberta**  
**Mendijs, Barbara**  
**Meyer, Gertrud**

## MEMORIALS

**In Memory of John Ames**  
Agnor, Millicent  
Wilcox, Thomas and Nancy

**In Memory of John and Betty Ames**  
Thomson, Ned and Mary Jane

**In Memory of Ron Anders**  
McDonald, Tom

**In Memory of Roger Anderson**  
Knutson, Jerrold and Melinda

**In Memory of Barbara Asher**  
Hein, Jill  
WI Educators Association Council  
Region 6

**In Memory of Paul Behrens**  
Behrens, Carol

**In Memory of Bill Benson**  
Luvisi, George

**In Memory of Edgar and Zita Berners**  
Berners, Edgar

**In Memory of Chuck Bither**  
Anderson, Jean  
Bauer, Tim and Barb  
Beerntsen, Tom and Penny  
Bither, Philip and Gavin, Kathleen  
Bunning, Jim and Barbara  
Cohen, Dan and Elizabeth  
Comeford, Christine  
Czechowski, Gary and Margo  
Czechowski, Kathryn  
Czechowski, Meghan  
Dhein, Annette  
Dickens, John and Nancy  
Emerson, Jan  
Evers, Janet  
Feuerstein, Katherine  
Fisher, Brent  
Follick, Jack and Cindy  
Forbes, Mark and Jill  
Friends and Family at Warner Records  
Frinak, Vicki  
Hansen, James and Barbara  
Harland, Richard  
Hebal, Bill and Katie  
Hendricksen, Pamela  
Johnston, John and Elizabeth  
Jorgensen, Laurel  
Leach, Katie  
Ledzian, Joni and Dean  
Lucas, Steven

**In Memory of Chuck Bither (cont.)**

Mackay, Linda  
McAninch, James and Susan  
McCarrier, James and Mary  
Meyer, James  
Mirr, Julie  
Murphy, Alan and Sandy  
Murphy, Fred and Mary  
Nelson, Robert and Dolores  
Nystuen, Lynne  
Peisch, Jeffrey  
Poland, Terry and Barbara  
Pudvah, Tama  
Rossberg, Betsy  
Sokolowski, Jim and Carol  
Thomas, L and Plouff, Tita  
Van Bramer, Peter and Judith  
Warth, Robert and Mary  
Watson, Al and Maribeth  
Weiss, Melissa  
Wilhelmi, Ginger  
Zimmer, Roy and Ginny

**In Memory of John Bladholm**  
Collins, Les and JoAnne  
Kollman, Robert  
Windau, Marilyn Zelke

**In Memory of Mary Kirsch Browne**  
Herbine, Lauren  
Upward, Meredith

**In Memory of William Bruns**  
Bruns, David

**In Memory of Richard and Dorothy Burkhardt**  
Burkhardt, Jon and Karen

**In Memory of Bob and Chris Buselmeier**  
Buselmeier, Bryn

**In Memory of Franklin W Peter Bush**  
Giuliani, Jamie

**In Memory of Kevin Butler**  
Knapp, Mary and Klein, James

**In Memory of Tim Byers**  
Anonymous  
Chizzo, Steve  
Gildner, Adam and Margaret  
Gross, Michael  
Grygleski, Jim  
The Highbanks, Campbells and  
Gustafsons

Hladky, Paul and Julie  
House, Melinda  
Hutten, Jim and Helen  
Maat, Tracie  
O'Brien, Christopher  
Peterson, Barbara  
Schuller, Susan  
Spoerl, Gerard and Elizabeth  
Tomaszewski, Jessica  
Van Haren, Jane  
Wamke, Jolene Sullivan  
Wisconsin Center for Environmental

**In Memory of Tim Byers (continued)**

Education Staff  
Yockers, Dennis

**In Memory of the Campbells of Jacksonport**  
Frings, James

**In Memory of Donald Cushman**  
Flory, Al  
Lange, Linda  
The Perkins Family

**In Memory of Jean Damrow**  
Killeen, Nancy

**In Memory of John Dauffenbach**  
Dauffenbach, Jane  
Thomas, David and Patricia  
Ester, Ed  
Fowler, Susan  
Watson, Gail  
Leberman, Tim and Donna  
Proctor, Harold and Judith

Regel, Mary  
Saiki, Sherry  
Tobin Solutions, Inc  
Yahnke, Jim  
Yahnke, Joan

**In Memory of Darlene Davies**  
Davies, Andy

**In Memory of Bob Davis**  
Davis, Rob

**In Memory of Nancy Davis**  
Barkhausen, Susan  
Bicoy, Bret and Cari  
Bush, Guy and Dorie  
Colburn, Marshall and Arlene  
Finger, Jack and Diane  
Fiorato, Tony and Cathy  
Halvorsen, Hal  
Heim, Paul J and Watkins, Julie  
Hughes, Kate and Tommy  
Kennedy, Susan  
Schultz, Doug and Penny  
Stone, Tim and Sue

**In Memory of Lois Deane**  
Schneider, Thomas and Jane

**In Memory of David Townley Debenham**  
Debenham, Barbara

**In Memory of Dr Harold Deutsch**  
Deutsch, Regine  
Friedl, Mike and Carolyn

**In Memory of W W De Voe**  
De Voe, Nick

**In Memory of Bob Dude**  
Anonymous  
Connelly, John  
Delind, Carol  
Dude, Annie  
Dude, Mary Ann  
Hutchins, Ann L  
Jonas, John and Lisa

**In Memory of Bob Dude (continued)**

Kilps, Russell and Kathleen  
Mueller, Mark and Debra  
Olson, Mart  
Pautz, Edward and Mary Ann  
Teplin, Jeffrey

**In Memory of John Ehrfurth**  
Ehrfurth, Paul and Marcec, Paula  
Hedgehog Holdings  
Kramer, Mark  
Rhoades, Bruce and Katherine  
Waltonen, Stu

**In Memory of Salli Eley**  
Burbidge, DJ  
Chang, Rowland  
Edelson, Sheldon and Roberta  
Kobasa and Mancoff, Paul and Debra  
Shannon, Dan and Hagman-Shannon,  
Deborah  
Smith, Todd

**In Memory of Salli and Tom Eley**  
Davis, Anne

**In Memory of Anne and Ken Ericson**  
Ericson, Mitch and Vogt, Carol

**In Memory of Darlene Forsberg**  
Forsberg, Bob

**In Memory of Bob and Carol Farwell**  
Leiline, Paul and Leslie

**In Memory of Marybeth Garafalo**  
Girouard, Thomas

**In Memory of Helen Gustafson**  
DeSalvo, Albert

**In Memory of Pete Hagen**  
Ewig, Marianne  
Gerken, Judith  
Geyer, Phyllis  
Grasley, Allen  
Hagen, Diane  
Hagen, Joyce  
Olson, Susan

**In Memory of William Haker**  
Parshalle, Donna

**In Memory of Martha L Hall**  
Hall, Kevin S

**In Memory of Marshall B Hanks, Jr**  
Anderson, Bob and Dorothy  
Bell, Hugh and Joyce

**In Memory of Richard L Harrington**  
Harrington, Mary

**In Memory of Meredith Davis Hart**  
Brownell, Lisa  
Fults, Tim and Marsella  
Hart, Fraser

**In Memory of Eric "Corky" Heil**  
Ewaskowitz, Jeff

**In Memory of Sue Hyson**  
Anderson, Bob and Dorothy  
Bell, Hugh and Joyce

**In Memory of Catherine Johnson**  
Harding, Marc and Debra

**In Memory of Sherwood Johnston**  
Urbrock, Bill and Barbara

**In Memory of Harold Just**  
Quick, Doug

**In Memory of Larry Kaufman**  
Kaufman, Sam and Liza  
Levine, David and Kaufman, Laura

**In Memory of Susan Marie Kocken**  
Deaton, Janet

**In Memory of Frances Kosalos**  
Higley, Bill and Kandy

**In Memory of Susan Kosmo**  
Asher, Barbara M

**In Memory of Marilyn Kouba**  
Rix, Bill and Jerri

**In Memory of Carol Lang**  
Lang, Merle

**In Memory of Bob Larsen**  
Berg, David and Diane  
Finger, Jack and Diane  
Klimaitis, Ron and Dougherty, Gloria  
Larsen, Sara  
Lokken, Ron and Judy

**In Memory of Gary Larson**  
Larson, Marj

**In Memory of Nick Lauter**  
Hansotia, Marilyn  
Klimaitis, Ron and Dougherty, Gloria

**In Memory of Dr James Mackey**  
Robertson Yount, Beth

**In Memory of Gordon MacQuarrie**  
Ewaskowitz, Jeff

**In Memory of Mildred Malzahn**  
Bramsen, John and Norma  
Malzahn, Karen

**In Memory of Steve and Dorothea Mann**  
Bomann, Gwen

**In Memory of Sara Martin**  
Bestor, William and Mary

**In Memory of Randee Matsoff**  
Sweeney, Mike and Barbara

**In Memory of Shelby Matzke**  
Blahnik, Jon and Christianna  
Brevard, Mary  
Brumder, Robo and Kathy  
Busch, Lynn and Sharon Krause  
Dauffenbach, Darrin and Dawn

Feirer, Russ and Debbie  
Frank, Rick and Barbara  
Glojek Limited  
Grelck, Kurt and Stephanie  
Harris, Dave

Keith, Annie and Hurst, Mark  
Krause, Jeff and Terri  
Kuehn, Gregg and Kathy  
Laird, Ben and Rintelman, Mary Jane  
Laske, Larry and Barb  
Ralph, Rick and Laura

**In Memory of Shelby Matzke (cont.)**

Reinders, Craig and Karen  
Reza, Naseem and Lou  
Rintelman, JR and Linda  
Rogers, Fawn, Peter, Nick and Ryan  
Spitzley, John and Judy  
Squier, Robin  
Trainer, Robert and Mary

**In Memory of Neil McCarty**  
Andrae, Dan and Marjorie  
Austin, Bridget  
Boldt, Pat

The Robert Brogan Family  
Christenson, Toni  
Gonzalez, Iris  
Kinsey-Jauquet, Andrea  
Lang, Jane  
LeVoy, Lee  
Madden, Michael and Barbara  
McCarty Law LLP  
McCarty, Joseph  
McKenzie, Thomas and Newman, Jill  
Merline, Robert and Linda  
Mooney, Melissa and Schultz, Philip  
Pitsoulakis, Sarah  
Rieger, Matt and Jo  
Smith, Robert  
The Vock and Vondracek Family  
WaterStone Bank Fund Of The  
Waukesha County Community  
Foundation  
Wolff, Bill and Kathy

**In Memory of Robert and Dorothy Merriman**  
Merriman, Jim and Patricia

**In Memory of Dorothy Mary Miller**  
Vernon, Robert and Bianco, Marjorie

**In Memory of John Munch**  
Santini, Steve  
Thompson, Mark and Marjore

**In Memory of Gene Musolf**  
Douma, Kate  
Forbes, Sharyn  
Muehlenbein, Ann

**In Memory of Jim Nagle**  
Anderson, Bob and Dorothy  
Bell, Hugh and Joyce

**In Memory of Andrew Nocker**  
Village Of Sister Bay

**In Memory of Evonne Olson**  
Caple, Louis

**In Memory of Johanna Wright Parkes**  
Braunagel-Brown, Mary  
Brevard, Mary  
Brumder, Robo and Kathy  
Cady, Adrienne  
Fletcher, Robert and Suzanne  
Frank, Rick and Barbara  
Gage, Barbara  
Jackson, Tom and Gaela  
Laird, Ben and Rintelman, Mary Jane  
Reed, Nedra and Craig, Gladys



**In Memory of Johanna Wright Parkes (cont.)**

Reza, Naseem and Lou  
Schewitz, Mary  
Stenber Dobyns, Alicia  
Stenger Riplinger, Cynthia and  
Riplinger, Mike  
Stenger, Michele and Gracz, Mike  
Tobiessen, Jon and Nancy

**In Memory of Peter M Platten, Jr**  
Harrington, Richard and Mary

**In Memory of Floyd and Shirley Popour**  
Popour, Lyle and Nancy

**In Memory of Arnie Rentmeester**  
Kudick, Julie and Wayne

**In Memory of Dick Robbins**

**In Memory of Kathleen (Neen) Rock**

Harris, Susan  
Rock, William  
Scheckler, Dr Bill and Rolliana  
Stone, Tim and Sue  
The Bill and Marge Walsh Family - John,  
Bill & Shirley, Mary & Ellis, Michael &  
Beth, Kate & Jim, Dan & Liz & Kids

**In Memory of David A Rosenberg**  
Breving, Bob and Rosenberg, Emily

**In Memory of David and Mary Ellen Rothwell**  
Wagner, Martha

**In Memory of Mary Ellen Rothwell**

**In Memory of Zalman Philip Saperstein**  
Bednarek, Jonas  
Callsen, Dave and Vonnie  
Lang, Carla  
Logic, Jeffrey  
Van Roo, Sarah

**In Memory of Donald and Shirley Schartner**  
Wenzel, Julie

**In Memory of Shirley Schartner**  
Brevard, Mary  
Finger, Jack and Diane  
Frank, Rick and Barbara  
Laird, Ben and Rintelman, Mary Jane  
Lichter, Stephanie  
Madden, Michael and Barbara  
Ottum, Jeff and Barb

**In Memory of Ruth Ellen Olkowski Guillen**  
Huntoon Scheider  
Huntoon, Linda

**In Memory of Erik Theodore Schjoth (1808-1888)**  
Halverson, Eric and Judy

**In Memory of Steve Schmelzer**  
Skahen, Dennis and Marguerite

**In Memory of Robert Schoof**  
Duitsman, Tiffany  
Fregien, Ronald and Fern  
Galginaitis, Dan and Bonnie  
Kangaroo Lake Association, Inc  
Konitzer, Thomas and Linda

**In Memory of Robert Schoof (cont.)**

Kreil, William  
Mahlberg, Marilyn  
Schneider, Thomas and Jane  
Schoof, Frederic  
Schoof, Jon and Trish  
Schoof, Roger and Katherine  
Schoof, Tamara Su  
Wallace, Linda

**In Memory of Pete Schuster**  
Madden, Michael and Barbara  
Stiefel, John  
Wilsman, Norman and O'Harrow, Peg  
Wingert, Kathleen

**In Memory of Carol Schwoerer, of our youth on Sawyer Harbor**  
DeRose, Nicolet

**In Memory of Marshall Sergenian**

Bass, Steven and Kathleen  
Hird, Stephen and Susan  
Marly, Ron and Peggy  
Melin, Tim and Liz  
Post, Greg  
Shulla, Peter and Rella  
Simmons, Ken and Gail  
Skolaski, Nancy and Stan  
Volker, John and Mary  
Wainwright, Mark and Sue

**In Memory of Hap Smith**  
Barnes, Dave and Jocelyn  
Bunning, Jim and Barbara  
Parsons, Bill and Betty  
Scholz, Carl and Ruth  
Zimmerman, Robert and Teresa

**In Memory of Mary Jo Stock**  
Duffy, Bob  
Hentzen, Michael and Dawn

**In Memory of Otto Thilenius**  
Thilenius, Stephen

**In Memory of My Brothers, Charles and Lee Tishler**  
Tishler, Bill and Betsy

**In Memory of Margery Uihlein**  
Beadell, Priscilla and Anthony  
Brevard, Mary  
Caldwell, Susan  
Fredrick, Mary  
Friedlander, Pete and Louise  
Hilton, James Robert  
Morrison, Mark and Ellen  
Sadoff Investment Management LLC  
Stanford, Gloria  
Stone, Tim and Sue  
Trainer, Robert and Mary

**In Memory of Gerry Voll**  
Voll, Linda

**In Memory of Steve Wilkie**  
Samson, David and Krista Wilkie

**In Memory of Jon M Willms**  
Zaborski, Mary

**In Memory of Thelma Windhauser**  
Wissink, Steve and Janet

## TRIBUTES

**In Honor of Eric and Ann Anderson**  
Stollenwerk, Deb

**In Honor of David Aurelius**  
Clay Bay Pottery

**In Honor of Kent Bahner**  
Bahner, Gail

**In Honor of Robin Baliszewski**  
Wilson, Sara

**In Honor of Bob Bartlett**  
Ristow, Thomas and Wenzel, Judith

**In Honor of Laura Bartolo's Birthday**  
Kobasa and Mancoff, Paul and Debra

**In Honor of Maryellen Beach**  
Beach, Kathleen

**In Honor of Keith Berg**  
Berg, Keith and Hedblom, Mary

**In Honor of Maxine Lindem Brennan**  
Gale, Barry and Brennan, Bernadette

**In Honor of Frank and Mary Brotz**  
Brotz, Tricia

**In Honor of Daniel Chosy**  
Chosy Greblo, Susan

**In Honor of Richard and Patricia Clark**  
Clark, Kelly

**In Honor of Thomas and Pamela Collins**  
Collins, Riley

**In Honor of Gina and Peter Deschler's 50th Wedding Anniversary**  
Margolies, Jonathan and Marjorie

**In Honor of Kevin and Carol DeVault**  
Pfarr, David and Sarah

**In Honor of Anna Franceschi**  
Franceschi, Paul

**In Honor of Barb and Rick Frank**  
Brumder, Robo and Kathy

**In Honor of Andy Gasper**  
Slater, Meagan

**In Honor of Dr Eggert**  
Eggert, Maggie

**In Honor of Jeff Ewaskowitz**  
Johnson, Barb and Rex, Don

**In Honor of Martin and Hilary Ford**  
Ford, Chris, Ali, Will and Nick

**In Honor of The Galson Family**  
Knudsen, Brian

**In Honor of Jim Gasper**  
Gasper, Melissa

**In Honor of Van and Hildy Gathany**  
Andrews, Kristen

**In Honor of Chris Gerlach's Birthday**  
Anonymous

**In Honor of Gibraltar-Ephraim Swamp**  
Eco-Building and Forestry, LLC - Tom  
and Kathy Girolamo

**In Honor of Julie Gianni**  
Gianni, Nicole

**In Honor of Barb Gilligan**  
Preston, Mary

**In Honor of Marie Grewal**  
Schmitz, William and Donna

**In Honor of Jake Gudmundsen**  
Liabo, Mark and Corenne

**In Honor of David Hartwell**  
Geoffrion, Tim and Jill

**In Honor of Giz and Linda Herbst**  
Herbst, Alicia

**In Honor of Mark Hoefs**  
Leisgang, Nancy

**In Honor of Robert Judd**  
Vasak, Rachel

**In Honor of Margaret Ketterer**  
Ketterer, Andrew

**In Honor of The Knudsen Family**  
Knudsen, Brian

**In Honor of Bill Krouse**  
Nsigthtel Wireless, LLC/DBA Cellcom

**In Honor of Don and Brigid Krutek**  
Krutek, Paul and Fran

**In Honor of Irene Kuiper**  
Leisgang, Nancy

**In Honor of Chris and Connie Larsen**  
Parrish, Todd and Shelley

**In Honor of Jeffrey and Alexis Lasky**  
Lasky, Gene and Yolanda

**In Honor of Estella and Chuck Lauter**  
Bremer, Sid and Rodesch, Jerry

**In Honor of John Liebmann's Retirement**  
Godres, Honneli

**In Honor of Sarah and Jay Livingston**  
Curtis, Al and Livingston, Jan

**In Honor of Deb Logerquist and Paul Schumacher**  
Curtis, Al and Livingston, Jan

**In Honor of Leo Mahoney**  
Mahoney, Andrea

**In Honor of Mike and Barb Madden's 50th Wedding Anniversary**  
Lukes, Charlotte

**In Honor of Marty and Dorita Malecki**  
Walker and Malecki, David and  
Maribeth

**In Honor of Dave and Colette**  
McDonough

**In Honor of The Morris Families**  
Fields, Chuck and Carolyn

**In Honor of Rick Murray**  
Murray, Leslie

**In Honor of Dick and Judy Neiman**  
Wilcox, Jock and Karen

**In Honor of David Neuman and Miranda Smith**  
Neuman, Paul and Jean

**In Honor of Mike and Beth Neuman**  
Neuman, Paul and Jean

**In Honor of Pat and Stacey Neuman**  
Neuman, Paul and Jean

**In Honor of Paul O'Keeffe**  
O'Keeffe, Heather

**In Honor of Pat and Jerry Olson**  
Olson, Susan

**In Honor of Barby Patronski**  
Luvisi, George

**In Honor of David and Sarah Pfarr**  
Devault, Carol

**In Honor of Rich and Ann Piehl**  
Krahn, Amy

**In Honor of Sandra Place**  
Harrer, Bernie and Schab, Lisa

**In Honor of David Plank and Nancy Welch**  
Goodspeed, Elizabeth

**In Honor of Jane Radue and Pat Riopelle**  
Radue, David

**In Honor of Bruce Ranta**  
Ranta, Zac

**In Honor of Jake Reddin**  
Spohn, Bill

**In Honor of Jon and Mary Reddin**  
Nolan, Kate

**In Honor of Jean Reynolds**  
Mcgowan, Smitty

**In Honor of Betsy Rogers**  
Villota, Gwynne

**In Honor of Valerie and Melvin Root**  
Ewaskowitz, Jeff

**In Honor of Baby Scheidt**  
Hammerberg, Craig and Kate

**In Honor of Gretchen Schmelzer**  
Skahen, Dennis and Marguerite

**In Honor of Gerry Schwaller**  
Stelzer, Aaron and Rosemary

**In Honor of Amy, Ryan, Marlo and Bauer Seefeldt**  
McCabe, Jeff and Barb

**In Honor of Susan Shemanske**  
Wicklund, Peter

**In Honor of Jane Shipe**  
Elson, Christine

**In Honor of John Skogsbakken**  
Skogsbakken, Kristian

**In Honor of Marvin Strawn**  
Luginbill, Kristin

**In Honor of The Sullivan Family's Best Hunter**  
Sullivan, Matt, Maurice and Logan

**In Honor of Joe Taylor**  
Sullivan, Julia

**In Honor of John and Darlene Thenell**  
Thenell, Matthew and Heather

**In Honor of Mugsie Townsend**  
Casper, Carin

**In Honor of Mary and Robert B Trainer, Jr**  
Manuel, Christian and William

**In Honor of Andrew Umentum**  
Anonymous

**In Honor of Steven and Laura Umentum**  
Anonymous

**In Honor of Bill and Barbara Urbrock**  
Urbrock, Stephen

**In Honor of Melody Walsh**  
Wayman, Deb

**In Honor of Mark Weisse**  
Hansen, Elizabeth

**In Honor of Nancy Welch and David Plank**  
Plank Family, Steve

**In Honor of Jed White**  
Reddin, Jake and Sarah

**In Honor of Cathy Wiegman**  
Foret, Adam and Mallory

**In Honor of Tim Wiegman**  
Foret, Adam and Mallory

**In Honor of Ashley Wigley**  
Eggert, Maggie

**In Honor of Jerry Winzenz**  
Hagemeister, Annelies

**In Honor of the Marriage of Ruann Lynn Wood and Daryl Allen Larson**  
Abbott, Ann

**In Honor of Beth Robertson Yount**  
Kelly, Lori and Shawn

Several wonderful friends and members have recently passed away. Gifts in memory of the following beloved members will be acknowledged in the 2021 Annual Report:

John Bladholm  
Darlene Bosch  
Franklin W Peter Bush  
John Dauffenbach  
Lois Deane  
John Ehrfurth  
Salli Eley  
William Haker  
Marshall Hanks, Jr  
Richard Harrington  
Catherine Johnson  
James Mackey  
Jim Nagle  
Andrew Nocker  
Dick Robbins  
Kathleen (Neen) Rock  
Zalman Philip Saperstein  
Pete Schuster  
Carol Schwerer  
Hap (Clyde) Smith  
Jon Willms



# 2020 FINANCIAL SUPPORTERS

Total contributions received during 2020

We thank the following donors who, in partnership with the Door County Land Trust, help protect the special places of Door County.

Welcome to our new supporters! Donor names listed in **bold type** made their first financial contribution to the Land Trust in 2020.

## \$50,000 AND ABOVE

Janning, Donna and Jim  
Larson, Richard and Roberta  
Mendius, Barbara

## \$20,000 - \$49,999

John C Bock Foundation  
Callsen, Dave and Vonnice  
Lester, Jim and Barbee  
Thenell, Matthew and Heather  
Trainer, Robert and Mary  
David V Uihlein Sr Foundation

## \$10,000 - \$19,999

Anonymous  
Bernal T Chomeau Private Foundation  
Diekman, Marianne  
Friedl, Mike and Carolyn  
**Gale, Barry and Brennan, Bernadette**  
Geyer, Phyllis  
Kessler, Dennis and Barbara  
Lisle, Tom and Bev  
Nooyen, Steve and Kristi  
Olson, Ted and Lady  
Steffen, Mike  
Sunshine Charitable Foundation  
WIDNR State Stewardship Funda

## \$5,000 - \$9,999

Alexander, Duncan and Keane, Kit  
Ambuel, Helen  
Brezan, Barry  
Bush, Mark and Kathy  
Daniel, David and Janet  
Fiorato, Tony and Cathy  
Fletcher, Robert and Suzanne  
Frank, Rick and Barbara  
Franklin, Larry and Cissie  
Glaesner Foundation  
The Mark and Anne Hansen  
Foundation

Heim, Paul J and Watkins, Julie  
Kapolnek, Jean  
Licata, Tony and Judy  
Lindstrand, Keith and Katherine  
Ling, Bob and Heidi  
McCoy, Mike and Marge  
Meyer, Gertrud  
**Murphy, James K**  
Ottum, Jeff and Barb  
Perkins, Judy and Keen, Dave  
The Roenigk Family Foundation  
Ross, Mason and Julie  
Siebel, Barbara  
Skinner Family Fund  
**Thirty-O'Leary Foundation**  
Vanderson, William and Gehrke,  
Christina  
Wenberg, David and Brenda

## \$2,000 - \$4,999

Anderson, Henry  
Anonymous  
Anonymous  
Anonymous  
Baumgartner, John  
Beadell, Priscilla and Anthony  
Becker, Bruce and Patty  
Bell, Steve and Susan  
Benson, Adam and Linnea  
Bero, Robert and Judy  
**Bertler, David and Lisa**  
Black, Jim and Trish  
Board, Rich and Barb  
Brown, Bob and Kathy  
Callen, Chris and Katie  
Chomeau, Doug and Mary  
Collins, Dan and Aten, Nancy  
Conner, Dick and Kit  
DeNardo, Tony and Donna  
Deschler, Peter and Gina  
Deutsch, Regine  
DeWitt, David and Julie  
EarthShare  
**Ericson, Mitch and Vogt, Carol**  
Foote, Peter and Wilson, Robin  
**Gudmundsen, Jake**

Harmon, George  
Henke, Rob and Jean  
Hislop Family Foundation  
Hitt, Brad and Karol  
Hoehn, James L and Goldberg, Nancy  
Hollingshead, Judy  
Jacobson, Rod and Jean  
Judd, Robert  
Keller, Chuck and Carol  
Kimmel, Don and Joan  
Klug, Karl and Lucy  
Konitzer, Thomas and Linda  
Larsen - Beadell Foundation  
Lauter, Charles and Estella  
Luber, Paul and Cathy  
Main Street Market  
McDonald, Kevin and Wanda  
McGinnis, John and Billeaud, Lana  
McLeish, Ken and Chris  
Nikles, Brad and Barb  
Northrop, Steve and Kaaren  
Pepelnjak, Anna  
Przybylo, Jay  
Riopelle, Maureen and Baliszewski,  
Robin  
Stanley, Emmy and Steve  
Swanson, John and Deanna  
Von Briesen, Ted and Peggy  
Waldburg-Wolfegg, Andreas  
Walker and Malecki, David and  
Maribeth  
Watson, Rob and Picken, Judy  
Wick, Tim and Cindy  
Wolff, Bill and Kathy

## \$1,000 - \$1,999

Acker, Fred and Cindy  
Al Johnson's Swedish Restaurant,  
Inc.  
Anderson, Ernest  
Anderson, Stefan and Joan  
Andrae, Dan and Marjorie  
Anonymous  
Anonymous  
Anonymous  
Augustian, Chris and Billina



Photo by Mary Goodner

Baer, Charles and Stephanie  
Barrett, Jean  
Becker, Carl and Susan  
Bednarowski, Keith and Mary  
Bell, Hugh and Joyce  
**Bell, Albert and Laurian**  
**Berg, David and Diane**  
Blackburn, Bob and Kay  
Blanchard, Pam  
Bramsen, John and Norma  
Bromley, Julie  
**Brunsch, Robin and Julie**  
Bunning, Jim and Barbara  
The Richard W and Dorothy J  
Burkhardt Charitable Fund  
Bykowski, John and Rose  
Cady-Kruse, Nell and Kruse, Steven  
CaJacob, Claire and DuMont, Debra  
Capp, Stephen and Carol  
Carl, Rudy and Patricia  
Carla and Ellsworth Peterson  
Foundation  
**Chase, Stuart and Gabriela**  
Ciezki, Nancy and Kostecke, Diane  
Coffman, Scott and Debra  
Connolly, Dennis and Bonnie  
**Conroy, Ann**  
Conroy, Peter and Beverly Ann  
Conta, Dennis and Deborah  
Cook, Andrew and Karen  
Cowles, Rob  
Cramer, Ward and Judy  
D'Abbraccio, Deanna and Morgan,  
Barbara  
Dagon, Russell and Sandy  
Davis, Dwight and Linda  
Davis, Nancy  
Davis, Rob  
Door County Ice Cream Factory

Dubick, Marc and Kris  
Fehring, Larry and Liz  
Fiedler, Carol and Therien, Claude  
Fiedler, Jessie  
Fiedler, William  
Finger, Jack and Diane  
**Fisher, Michael and Jody**  
Ford, Diane and Patrick  
Gerrits, Dottie  
Gould, Spencer and Barbara  
Graupner, Philip  
**Greenbury, Jeff and Laurian**  
Gunderson DeNardo Foundation  
Hake, Donna and Bruce  
Hansotia, Marilyn  
Harlan, Bob and Madeline  
Hart, Anne and van Duym, Andy  
Healy, Beth and Fordney, Mike  
Heeringa, Don and Coggin  
**Heilman, David**  
Hermann, John and Dolores

Jankowski, Theodore and Patricia  
Joel Eggert D.D.S., S.C.  
Johnston, Mike and LeTourneau, Sara  
Kimbell, Alan and Anne  
Klein, Michael and Maureen  
Knabel, Mark and Mary  
Knight, Sue  
Kosky, Judy  
Kostecke, Keith and Jann  
Kuester, Dennis and Sandy  
Kurtz, Jim and Becki  
Laatsch, Bill and Hunter, Fran  
Lanser, Brian and Sue  
**Lantero, Peter and Dawn**  
Larsen, Sara  
Levi, Jill and John  
Lewis, Elmer and Ann  
Lindsay, Bill  
Luke, Jacquie and Rice, Ken  
Lukes, Charlotte  
Madden, Michael and Barbara  
**Mahoney, James**  
Mahoney, Liz and Mike



Photo by Jamie Palmer





Photo by Mo Jo

Maloney, Kevin and Laura  
Manges, Randy and Lisa  
Margolies, Jonathan and Marjorie  
Marshall, Elaine  
Mathys, Ken and Shawn  
McCutcheon, Mike and Windsor  
Meissner, Genie and David  
Miller, Ed and Sandy  
Moline, Ronald and Barbara  
Moore, Tom and Kathie  
Morgan, Michael and Ann  
Myerson, Carla and Robert  
Nell MD, Patricia  
Nelson, Christopher and Olin, Joyce  
Olsen, Lawrence and Lynn  
Olson, Carol and Bruce  
Olson, David and Fritsche, Claire  
Orner, William  
Parsons, Bill and Betty  
Perry, Kerry  
Pinkert Law Firm LLP  
Ranta, Bruce and Lyn  
Reinders, Craig and Karen  
Reza, Naseem and Lou  
Richards, Jim and Marianne  
Richards, Nancy and Bob  
Robert E Hansen Family Foundation  
Rockway, Todd and Sheryll  
Samson, David and Wilkie Samson,  
Krista  
Sandor, Bela and Ruth  
Schaars, Bill and Mary Jo  
Schmelzer, Gretchen  
**Schreiber, John and Kathleen**  
Schultz, David and Kristine  
Scriver, Tom and Meredith  
Sedar, Jo  
Semaca, Jenny and Nick  
Sensenbrenner, James B and Carol L  
Small, Dr Ron and Christine

Stenger, Michele and Gracz, Mike  
Szuberla, Wayne and Geri  
**Taylor, Jeff and Rebecca**  
Thenell, Julie  
Thilly, Roy and Mary  
Turner, John and Judy  
Turrieff, Tom and Jo Ann  
Van Den Brandt, John and Jean  
Van Dyke, Greg and Annie  
Vanden Houten, Dale and Scott,  
Richard  
**Vaughan, Don**  
Vichick, Greg and Wendy  
Vincent, John and Annette  
**Voll, Linda**  
**Voskamp, Susan**  
Wake, Brian and Joan  
Warner, David and Rose  
Washington Island Ferry Line Inc.  
White Gull Inn  
Wilcox, Jock and Karen  
Wilkie, Charles and Nancy  
**Wille, Scott**  
Williams, Jeffrey and Susan  
Wilson, John, Jr  
Wilson, Karen  
Wittenkeller, Al and Judy  
Yancey, John and Karen

## \$500 - \$999

Ackell, Peter and Laurie  
Andersen, Bill and Heather  
Anderson, Bob and Dorothy  
Anderson, Jim and Jane  
**Anonymous**  
Anonymous  
Anonymous  
Banks, Susan and Kendall  
**Baruch, Eric**

### Baune, Brad and Deb

Beckett, Caroline and Sandner, Frank  
Benson, Don  
Blahnik, Jon and Christianna  
Blanton, James and Barbara  
Blitz, Bev  
Bowman, John and Kay  
Brevard, Mary  
Brorson, Jon and Linda  
Brumder, Robo and Kathy  
Budzak, Archie and Kathie  
Budzak, Lynn  
Buechel, Jim and Becky  
Burke, Dan, Heidi, Makenzie and  
Nathan  
Cady, Bonnie  
**Carr, Diane**  
Chapman, Don and Deb  
Christiansen, Julianne  
Claggett, Tom and Meg  
Classen, Peter and Barbara  
Classon, Karen  
Clay, Tom and Lisa  
Colburn, Marshall and Arlene  
**Collins, Marshall and Beth**  
Corriveau, John and Mary  
Cramer, Chris  
Cubar, Susan and Jordan, Thomas J  
Danielson, Dan and Donna  
**Dean, Eleanor and John G**  
Debenham, Barbara  
Derksen, Jon and Susan  
DiBuono, John and JoAnn  
Dobyns, Vince and Alicia  
Doneff, Robert and Lynn  
Dull, Charles and Joanne  
Elson, Christine  
Erickson, Mary  
Fales, Mary  
Frudden, Bruce and Grace  
Fuhrmann, Don and Barbara  
Germain, Chuck and Faye  
Glasser, Mark and Linda  
Gomoll, Tom and Kate  
Grelck, Kurt and Stephanie  
Hall, Kevin S  
Harrington, Richard and Mary  
Haswell, Anthony  
Haus, David and Jill  
Hauser, John and Laurel  
Hayes, Howard and Charlotte  
Heal, Eunice  
Hendrickson, Duane  
Herndon, Richard and Carol  
The Herrell Family  
Holey, Mark and Michaela  
Holly, Mike and Deb  
Holm, Barbara  
**Honig, Robert and Lisa**  
**Jack & Jill's Landscape Co**

Jacobs, Steve and Amy  
Johnson, David and Mel  
Johnson, Dennis and Janet  
Kane, Ralph and Gretchen  
Kaufman, Marie  
Keller, Dr Tom and Marge  
Keller, Frank  
Kissel, Robert and Beverly  
The Paul Knueppel Family  
Kopeck, Joe and Karen  
Korolewski, John and Sally  
Krebs, Marty  
Kriha, Rob and Darcy  
Laird, Ben and Rintelman, Mary Jane  
Larson, Eric and Lewis, Susan  
Lecy, Jerry and Andino, Katy  
Lengh, Robert and Carolyn  
Lindahl, Bob and Van Arragon, Wilma  
**Lynch, Chuck and Barbara**  
Lynch, Rich and Mary  
Madison Community Foundation -  
Lynch Maximum Giving Fund  
The Rev and Mrs Mark G Matzke  
Family  
McCarthy, Chip and Mary Jo  
McLaughlin, Rick and Joan  
McMillan, Florence  
Mead, Chuck  
MMG Foundation Inc.  
Moore, Chris and Sheri  
Mullaney, Pat and Gail  
Neuman, Paul and Jean  
Norfray, John D

Northwestern Mutual  
**Novicki, Joe and Judy**  
Nsighttel Wireless, LLC/DBA Cellcom  
O'Brien, Frances  
O'Mara, Brian and Debbie  
Ottum, Brad  
Panzer, Fred and Sandy  
Pelt, Mike and Kathy  
Pennington, Mark  
Peterson, Scott and Desenis, Judy  
Petrie, Pete and Lucia  
Platt, Todd and Margaret  
Pope, Rex and Linda  
**Popp, James**  
Pritchett, Wendell and Kringel, Anne  
Prusik, Dennis and Maietta,  
Maryellen  
Radtke, Al and Sue  
Roenigk, Randy and Julie  
Roppuld, Paul and Marianne  
Rowley, Gordon and Naomi  
Russell, Stan and Dorothy  
**Sanduski, Steve and Linda**  
Sannes, Randy and Sandy  
Scheckler, Dr Bill and Rolliana  
Schroeder, Brent and Mary Kay  
Schuldt, John and Moore, Mary  
Schultz, Craig and Sandy  
Schultz, Susan  
Schwartz, Carl and Barbara  
**Seibold, Gary and Julie**  
Shannon, Dan and Hagman-Shannon,  
Deborah

Smythe, Dick and Mary  
Stanley, Jerrel and Judy  
Steffens, Mary  
Stern, Elsa and Frank  
Stern, Frank and Elsa  
Stone, Tim and Sue  
**Stott, Donald**  
Stott, Nancy  
Sunnypoint Landscape  
Surbaugh, William L and Cheryl S  
**Swarm, Anton**  
Sweeney, Mike and Barbara  
Thurman, Tom and Barbara  
Trainer, Charles and Booth, Anne  
Tyson, Randy and Yvonne  
Utey, Bill and Phyllis  
Van Gemert, Rob and Jensen, Marilyn  
Van Lanen, John and Frances  
Voigt, Ken and Sue  
**Walter, Ron and Suzy**  
Walters, Mark and Diane  
Wessels, Bill and Trudy  
White, Richard and Jan-ann  
Whittow, Dick and Jan  
Wilder, Nick and Keven  
**Wilkinson, Thomas and Suzanne**  
Wilson, Doug and Vicki  
Wisconsin Land Fund of the Greater  
Green Bay Community Foundation  
Witt, Gene and Carmen  
Wolgram, Dan and Joan  
**Wylie, Rick**



Photo by Chris Kruse



# 2020 FINANCIAL SUPPORTERS

Total contributions received during 2020

## \$250 - \$499

Abbott, Ann  
Agnew, Bob and Marge  
Alexander, Kenneth and Mary Ellen  
Allen, Mark and Fisher, Judy  
Allweiss, Allan and Corbett, Emily  
Anderson, Jack and Sue  
Anderson, Mary  
The Charles and Mary Anderson  
Charitable Fund, A Donor Advised  
Fund Of The U.S. Charitable Gift  
Trust  
Anonymous (3)  
Austin, George and Vukelich-Austin,  
Martha  
Axelrod, Jon and Susan  
**Ballard, Linda**  
Barrie, Tom and Sue  
Basten, Lee and Susan  
Baumann, Daniel E  
**Beck-Engel, Dave and Terri**  
Bhatheja, Alexis Pfeiffer  
Blacksmith Inn  
Blackwood, Thomas and Joan  
Blahnik, James and Judith  
Bleser, Helen  
Blue Dolphin House  
Boldt, Pat

Brogan, Bob  
**Budysz, Bonnita and Theaker, Robert**  
**Buechel, Lindsay**  
Buege, David and Linda  
Bultman, Steven J and Donna M  
Bultman, Tim and Ruth  
Cardiff, Peggy  
Carmen, Sam and Vicky  
Christensen, John and Mary  
The Robert J Collins Family  
Conway, Darrell and Susan  
Craig, Richard  
Cummings, James and Lisa  
Dammon, Ronald and Welcher  
Dammon, Candy  
Dammow, Roger  
**Del Alamo, Jr, Linda and Jorge**  
Devault, Carol  
Dickmann, Jeff and Karen  
Diekmann, Karl  
**DiMonte, Jim and Kerri**  
Dineen, Dan and Vanden Heuvel  
Dineen, Linda  
**Domer, Britton and Charlie**  
Door County Nature Works  
Door Landscape & Nursery  
Dougherty, Thomas J and Linda L  
Doyle, Charles and Rita  
Dr Timothy Tishler D.D.S.  
Drake, Merton and Carol  
Dude, Mary Ann  
Eco-Building and Forestry, LLC/Tom  
and Kathy Girolamo  
Eley, Tom and Victoria  
Erbe, Paul and Laura  
Erickson, Miriam  
Fallucca, Laurie  
Fasciano, Susan Nicholas  
**Fass, Larry and Linda**  
Feist, Tim and Braatz, Laurel  
Filosa, John and Roach, Cathaleen  
Fiore, Beth and Michael  
Fish Creek Moccasin Works  
**Flemming, Creston**  
Forsberg, Bob  
**Fowkes, Scott and Maria**  
Frey, Fred and Barb  
Foemming, Barbara D  
Fults, Tim and Marsella  
Gauger, Stephen and Aimee  
Gerrits, Nick and Katherine  
Gesme, John  
Gills Rock Pottery  
Gimelli, Giorgio and Golestanian, Ellie  
Gissell, George  
Goldammer, William and Colette

The Goldammer Family Foundation Inc  
Graul, Barb and Tim  
Greenfeldt, Barbara and Eric  
**Gretz, Kenlyn and Lynn**  
Guenther, John  
Hanke, Dale and Kathy  
Hanney, R and R  
Hart, Fraser  
Hartman, Bill and Mary  
Hauser, Dick and Carrie  
Hendrix, Tom and Lisa  
Herbert H Kohl Charities  
**Hermann, Donna**  
Hickey, Dave and Pat  
Hoes, Jennifer, Brady and Dresden  
**Hoke, Steve and Michelle**  
Holland, Michael  
Hoyem, David and Carole  
Hoyer, David and Rachel  
Hubbard, Ron and Bev  
Impressions Printing and Graphics Inc  
Jerry's Flowers  
Johnson, Arlene and Weidenbacher,  
Chris  
Johnson, Nancy and Tom  
Kahle, Keith and Lori  
**Katt, Gloria**  
Kenney, Thomas and Shirley  
Kinosian, Bob and Sue  
Klimaitis, Ron and Dougherty, Gloria  
Kopecky, Rob and Cheryl  
Krainak, Mike and Farber, Janet  
Krulek, Don and Brigid  
Kudick, Julie and Wayne  
LaBorde, John and Lisa  
Lacy, Mary Paul  
**Landscapes Of Place LLC**  
Landwehr, John  
Lang, Carmen  
Lapp, Beatrice  
Larson, James and Susan



Photo by Andrew Pirrung

Larson, Marj  
Later, Tim and Field, Mary  
Lemburg, Keith  
Levine, David and Kaufman, Laura  
Lewis, Lloyd  
Lincoln, Jim and Eleanor  
Livingston, Jan and Curtis, Al  
Lockhart, Alex  
Lokken, Ron and Judy  
Lundquist, John and Mary Ann  
Luvisi, George  
Madel, Margaret  
Maloney, Ron and Pam  
Martin, Mark and Susan Foote-  
Mason, Mr and Mrs Ronald J  
Mazza, Peter and Mary  
McAninch, James and Susan  
McCoy, Bob and Sharon  
McDonough, Dave and Colette  
McHolland, Jim and Cass  
McNamara, Daniel and Debby  
Meissner, Greg and Marsha  
Meyer, David and Elizabeth K  
Mix, Phoebe A  
Moegenburg, Pete and Laura  
Mohr, Wayne and Barbara  
Mooney, Melissa and Schultz, Philip  
Moster, Mary  
Murdock, Janice  
Mutchler, Keith and Sherry  
Naleway, Wally and Elaine  
Nelson, Joanne  
Newkirk, Martha  
**Ostrem, Randy and Lisa**  
Parks, Bob and Cathi  
Parrish, Todd and Shelley  
Paschen, Douglas  
Peninsula Vision Care, LLC  
Pescheret, Marc and Kathleen  
Peshek, Sharon A and Peter A  
Peterman, Jim and Maggie

Pfeiffer, Mrs Gabriele F  
Place, Sandra  
Pojunas, Kathleen  
Polacheck, Joe and Kathy  
Postles, Jeff and Therese  
Potts, Greg and Marilyn  
Quick, Doug  
**Quist, Kathy**  
Rand, Jane  
Rankin, JoAnne and Jim  
**Reda, Jeanette T**  
Regan, Brian and Angela  
Reichwald, Harry and Carla  
Reiser, Dale and Maureen  
RentShadowLawn.com  
Riker, Terry and Gini  
Riley, John and Maryellen  
Riordan, Brigid  
Ristau, Paul and Barbara  
Ristow, Thomas and Wenzel, Judith  
Roback, Dave and Gini  
**Robertson Yount, Beth**  
Rogers, Robert and Emily  
Rosecky, Mary  
Rossman, Cinnamon  
Sautebin, David and Karen  
Sauter, Martha  
Schaper, John and Susan  
Schaulis, Dan and Cindy  
Schmidt MD, Fritz and Beth  
Scholz, Carl and Ruth  
Schoof, Frederic  
Schoof, Jon and Trish  
Schouten, Thomas and Susan  
Schultz, Jim and Ginny  
Schultz, Jim and Marti  
Schulze, Gary and Bev  
Schwaab, Mike and Maureen  
Schwartz, David and Maureen  
Sessler, Greg and Kaufman, Dale Ann  
Shadle, Neil and Lillie May  
Sharpe, Lindsay  
Sheard, Bart and Linda  
Sherman, Jerry and Lipp, Carolyn  
Shields, Walt and Tiggy  
Simpson, Kenneth  
Sister Bay Bowl  
**Smith, Stephen and Kristi**  
Snapp, Erik and Brubaker, Cathy  
Spevacek, Glenn and Kathleen  
Stiefel, John  
Stuebi, Bob and Rose  
**Teich, Michael and Kelsey, Peggy**  
Terra Cottages  
Tessin, Jeff  
The Garden Lady  
Theisen, Maria and Reda, Steve  
Thurrow, Dave and Posy  
Tishler, Bill and Betsy  
True North Real Estate

Urbrock, Bill and Barbara  
Urbrock, Stephen  
**Vanden Heuvel and Dineen S.C.**  
Vopat, James and Theresa  
Voreis, Mark and Allen-Voreis, Lucia  
Waldron, Merrilee and John  
Walker, Richard and Melissa  
Wallman, Steve and Betsy  
Wanda, Nick and Jane  
Watkins, Norman and Mabel  
Wedige, Steve and Doris  
Westbrook, Dan and Connie  
Whitney, John and Jane  
Widder, Tripp and Nancy  
Wiley, Salley and George  
Wilson, Nick and Demoly, Marc  
Wood, David and Doughty, Jane  
Woodwalk Gallery/Andrew and  
Jillaine Seefeldt  
Woodyard, John and Pat  
**Wubben, Deborah**  
Yeast, Gary and Barbara  
Zaug, Jerry and Joan  
Ziarnik, David and Shelley  
Zingsheim, Kurt and Sue

## \$150 - \$249

Abrahamson, Theo and Jan  
Ahlbeck, Dirk and Tracy  
Alfred, Larry and Linda  
Allen, Edson and Loretta  
Alme, Brian and Luanne  
**Anonymous**  
Anonymous  
Anonymous  
Ash, Maurie and Vicki  
Barnard, Francha  
Baxter, James and Elizabeth  
Bearman, Ken and Larsen, Karla  
Benedict, Roger and Christensen,  
Paula  
Blanc, Marge and Jon Lyon  
Blankenburg, Ralph and Kathy  
Block, Phil and Cindy  
Bonovich, Brian and Sarah  
Bosman, Julie  
Bosworth, Bob and Wendy  
Boucher, Karen and Taylor, Rick  
Bradley, Jim and Libby  
Breving, Bob and Rosenberg, Emily  
Brogan, Julie Anne  
Bruns, David  
Buck, Ryan  
Buechner, David  
Bultman, David and Marge  
Burkhardt, Jeffrey and Jeanine  
Burkhardt, Jon and Karen  
Busby, John and Terry  
Cahan, Jim and Schneider, Linda



Photo by Jeff Lutsey



Campbell, Kathy and John  
 Casagrande, Gary and Teri  
 Chang, Robert and Reynolds, Sheila  
 Christensen, Frank and Cristy  
 Christenson, Toni  
 Comeford, Christine  
 Conrad, Tony and Lillie  
 Cowan, Karen  
 Craig, Will and Ginny  
 Cushman, Betsy and Preston, Barb  
 Danis, David and Nancy  
 Davie, Susan DeWitt  
 DeLisle, Becky  
 Differding, James C and Dickes,  
 James R  
 Diltz, Greg and Julie  
 Diltz, Peter and Kathy  
 Dirks, Rich and Sandra  
 Donaldson, Nancy  
 Donnino, Joe and Sue  
 Door Pioneer Trailblazers  
 Snowmobile Club  
 Douglass, Ed and Adele  
**Drost, George and Beth**  
 Eckert, John and Judith  
**Eckmann, James and Joann**  
 Ehlers, D Todd and Cynthia  
 Engl, Rob and Robin  
 Evenson, Phil and Carolyn  
 Ewaskowitz, Jeff  
 Ewig, Marianne  
 Fedenia, Sue and Stanley, Jeff  
 Feeney, Barbara  
**Foote, William and Kari**  
 Francik, Jeffrey  
 Freyman, Bill and Sarah  
 Frings, James  
 Gershan, Drs Bob and Jill  
 Gilford, Steve and Anne  
 Glenn, Bill and Mardi

Goetz, Janis  
 Goodner, Dale and Mary  
**Graff, Dave and Paula**  
 Grota, Carl and Jennifer  
 Hall, Lane  
 Hammen, Nancy  
 Hartmann, Bob and Bonnie  
 Helm, Mary Jo  
 Henriksen, Charlie and Kathy  
**Herbine, Lauren**  
 Herschberger, Lisa  
 Hilbert, Roger and Danette  
**Hoffert, Stan and Susan**  
 Hoffman, Dave and Liz  
**Hoffman, Mark and Allyson**  
 Hoffmann, Susan and Leon  
 Hoganson, Bob and Vicky  
 Holub, Gregory and Mary  
 Houston, Kate  
 Howe, Eric and Wegner, Kristin  
 Hubbard, Kenneth and Denise  
**Huppertz, Jeffrey**  
 Isensee, Karen  
 Jome, Bob and Ruth  
 Just, Nancy and Harold  
 Kanas, Richard and Moore, Linda  
 Kaufman, Sam and Liza  
 Keller, Stephen G and Anna Marie  
 Kennedy, David and Jeanne  
 Ketterer, Margaret and Robert  
 Kibbee, Jo and Doug  
 Kiehnau, Jason and Nancy  
 Kierstyn, Karen and John  
 Kile, Lucy  
 King, Janis  
 Kitchens, Joel and Billett, Sherry  
 Klatt, Mel and Shirley  
 Knutson Boche, Bev and Boche,  
 Rick

**Koch, Thomas and Brenda**  
 Konetzke, Steven and Carol  
 Korte, Joseph  
 Koyen, Jesse and Sam  
 Krebs, Jerry and Jean  
 Krol, Gary and Ekaterina  
 Kuehn, Gregg and Kathy  
 Lang, Merle  
 Lange, Jeff and Brenda  
**Larson, Daryl and Ruann**  
 Latta, Paula and Ralph  
 Lawson, John and Anderson, Gail  
 Leavitt, Mitch and Jean  
 Lee, John and Claire  
 Lees, Lynn  
 Leiterman, Mary  
 Lemburg, Ruby  
 Lenehan, Roma  
 Lenke, Robert and Linda  
 Liederbach, Elida  
 Locher, George and Patricia  
 Longert, Jack and Lyman, Kate  
 Lott, Peggy  
 Lundstedt, Tom and Charli  
**Macola, Greg and McEnerney, Mary**  
 Mahlberg, Marilyn  
**Malecki, Marty and Dorita**  
**Malizio, Marguerite**  
**Malloy, Michael and Mary**  
**Malzahn, Karen**  
 Marsh, Darren and Dawn  
 Marsho, Jim and Nancy  
 Masterson, Michael and Claudia  
 Mathewson, Randy and Karen  
 Mazeski, Conrad and Kelly  
 Mazurkiewicz, Mike and Carol  
 Mc Dermid, Debbie  
 McClenahan, Bill  
 McGee, Doug  
 McGrath, Maureen  
 Merline, Robert and Linda  
 Mohr, Larry and Janet  
 Morris, JoAnne  
 Mudrak, Ray and Pat  
 Mueller, Paul and Ingrid  
 Naples, Greg and Lynn  
 Nelson, Bill and Kay  
 Nelson, Jim and Judi  
 Nelson, Ken and Wendy  
 Nelson, Randy and Jane  
 Neuman, Juliana  
 Newman, Peter and Castelli, Pat  
 Niesen, Dan and Penny  
 Norsetter, John and Rhonda  
 O'Hagan, Pat and Karen  
**O'Keefe, John**  
 Osowski, Edward L and Maryjo  
 Ott, Sandie  
 Payne, Don and Carolyn  
 Pfarr, David and Sarah

Phipps, Ken and Diane  
 Piehl, Rich and Ann  
 Piotrowski, Constance  
**Polczynski, Mark and Maureen**  
 Raaths, Jack and Susan  
 Recht, Dr Donna  
**Rhind, John and Connie**  
**Rhoades, Steve and Carol**  
 Ripp, Dan  
 Ritger, Ed and Stevie  
 Rogers-Ketterling, Kaye  
**Ryan, Jim and Seubert, Sherry**  
 Saksewski, Dave and Hagene, Margie  
 Sanden, Jim and Kathy  
 Sandstrom, Karen  
 Sankey, Peggy  
 Schartner, Julie  
 Scheig, Katie  
 Schmeltz, Tony and Barbara  
 Schmuhl, John and Carol  
 Schneider, Tom and Sarah  
 Schroeder, David  
 Schulte, Joe and Catherine  
 Schumacher, Paul and Logerquist,  
 Deb  
 Schwengel, Jim and Judy  
 Sedan, Gary and Kathy  
 Seville, Joseph Y  
 Shea, Shelley and Larry  
 Sherman, Jan and Art  
 Sieker, Fritz and Van Glarik, Janet  
 Simon, Tom and Kathy  
 Slater, Janet  
 Squier, Robin  
 Stanger, Steven and Arlene  
 Starck, Paulette and Hyde, B Jane  
 Stevenson, Nancy  
 Strauch-Nelson, Jon and Wendy  
 Stultz, Rich and Jenni  
 Swanson, Gerry and Mickey  
**Thilenius, Stephen**  
 Thompson, Floyd and Eileen  
 Treleven, Joe and Terry  
 Tuch, David and Barbara  
 Tveite, Paul and Emily  
 Van Zandt, Mike and Sue  
 Volk, Greg and Gretta  
 Wagner, Kaye  
 Wagoner, Andrea and Ruggeri, Roger  
 Wahl, Bob and Barba  
 Watson, Cathy and Dunne, Richard  
 Webber Chiropractic Office  
 Weber, John  
**Weisse, Mark and Patricia**  
**Whitman, Maggie**  
 Wild Tomato  
 Williams, Dan and Joyce  
 Wilson, Dennis and Jean  
 Winkler, Anita  
 Wise, Bob and Nancy



Photo by Rebecca Struck

Wojahn, Dennis and Karen  
 Wojciechowski, Jim and Jane  
 Woodruff, Grace and Tony  
 Woodside, Terri Witthuhn  
**Wren, Chris**  
 Wyman, Anne and Glau, Richard  
 Yeomans, Geoffrey and McKeefry,  
 Bruce  
 Youngsteadt, Duane and Leslie  
 Zehner, Diane  
 Zimmerman, Steve and Jan  
 Ziolkowski, Steve and Sherry  
 Zuckerman, David and Madsen, Judy

## UP TO \$149

Accardi, Nick and JoAnna  
 Aicher, Matthew  
 Alexander, Ann  
 Allen, Clarence and Owen, Maryann  
**Allen, David**  
**Allen, Kevin and Jane**  
 Alt, Claudia J  
 Ammons, Mike and Lesley  
 Andera, Eileen  
 Anderson, Bill and Candy  
 Anderson, Brian and Rozan  
 Anderson, Eric and Ann  
 Anderson, Joyce L  
 Anderson, Linda  
 Anderson, Paul and Erika  
 Andrews, Kristen  
 Angst, Dan and Kolb, Carolyn  
 Anonymous (7)  
**Anonymous (5)**  
 Armstrong, Lloyd and Susan  
 Ascher, Cynthia  
 Asher, Barbara M  
**Asplund, Ray and Regina**

**Atkinson, Allan**  
 Aufrere-Sebetic, Jacqueline L  
 Augustson, Dawn  
 Aulabaugh, Norman and Carol  
 Bacon, Lee and Inge  
 Banzhaf, Harry B  
**Barkman, Nancy**  
**Barnes, Dave and Jocelyn**  
 Barta, Bud and Marilyn  
**Barta, Heidi**  
 Bartels, Thomas and Delores  
 Bartlett, Robert  
 Bartoli, Beth  
 Bartolini, Susan and McMillan,  
 Michael  
 Bartolo, Laura  
 Bass, Leroy and Marjorie  
**Bassuener, Kurt**  
**Bastar, Brandon**  
 Batzli, George  
**Bauer, Gerard and Mary**  
 Bauer, Tim and Barb  
 Bauer, Tom and Mary Anne  
 Bauer, Tom and Melanie  
 Bauhs, Mary  
 Bay Shore Outfitters  
 Beck, John  
**Becker, John**  
 Beerntsen, Tom and Penny  
**Behrens, Carol**  
 Behrens, Scott and Palimino, Esther  
 Bell, Mary and David  
 Bengston, Dirk  
 Bennett, Carl and Broeren, Sue  
 Bennett, Joan E  
 Benson, Donna  
 Berg, Keith and Hedblom, Mary  
 Berger, Jean

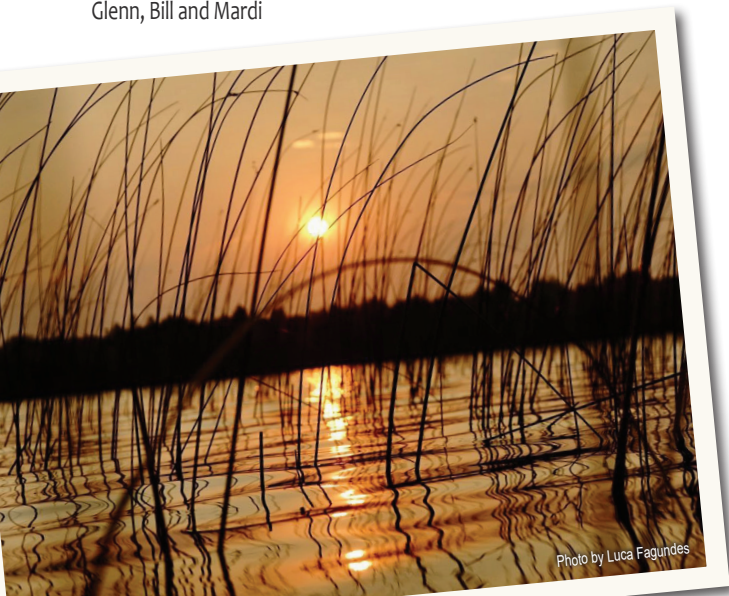


Photo by Luca Fagundes



# 2020 FINANCIAL SUPPORTERS

Total contributions received during 2020



Photo by Melissa Miller

Berggren, Janet and Ken  
**Berghammer, Joe and Ann**  
 Berk, Avi and Laurie  
**Berners, Edgar**  
**Berns, Kerry and Rossmeissl, Joe**  
**Bestor, William and Mary**  
 Bezouska, Bob and Mary  
**Bichler, Kevin and Barbara**  
 Bicoy, Bret and Cari  
 Biebl, Phil J and Grohskopf, Kevin  
**Birnschein, Bryan**  
 Birr, Lori  
**Bisacchi, Ken**  
 Biwer, Adam  
 Bleckwenn, William  
 Block, Bob and Bonnie  
 Block, Jim and Allen, Terese  
**Block, Marsha**  
 Bloedorn, Lucy and Michael  
 Bock, Barbara  
 Boehlke, Kevin and Jan  
**Boerke, David and Suzy**  
**Bomann, Gwen**  
 Bonderud, Kendra and Parsons,  
 Kenneth  
 Bork, Barbara  
 Boudous, J  
**Boyerski, David**

Boyce, Chris and Laurie  
 Boyd, Nancy  
 Boyer, Ken and Sue  
 Branson, Beverly  
 Brehm, Phil and Judy  
**Bremer, Sid and Rodesch, Jerry**  
 Brennan, Jeanine  
 Brennan, John and Suzy  
 Breseman, Mark  
 Brice, James  
 Brickman, Jay and Rita  
 Briese, Joanna  
 Brodd, Judy and Mike  
 Brogan, Gisela  
**Brotz, Frank and Mary**  
 Brown, Jerry and Judy  
**Brunner, Lee**  
 Brusky, Kelly  
 Buck, Dave and Patty  
**Bukala, Stanislaw**  
 Bunker, Tom and Sally  
**Burda, Diana**  
 Burlend, Warren and Nancy  
**Burns, Greg and Kathleen**  
**Burruss, Peter**  
**Busch, Lynn and Krause, Sharon**  
**Butek, Russell**  
 Caldwell, Susan  
 Cameron, Cindia  
 Campbell, Brian and Lori  
 Canter, Sharon and Richard  
**Cappaert Contemporary Gallery**  
 Cardella, Karina  
 Cardiff, Joe  
 Carey, George and Linda  
 Carlson, Juanita  
**Carpenter, Chuck and Sally**  
 Carpenter, John and Julie  
**Carroll, Mark**  
**Carter, Josh**  
**Case, Gloria**  
 Case, Karen A  
 Cassidy, BJ  
**Cecchini, Anthony and Jill**  
 Chan, Carlyle  
 Chelmecki, Tony and Trudy  
**Chen, David**  
**Chosy, Dan**  
 Christiansen, Bruce and Laurie, Susan  
 Christiansen, Dave and Sally  
 Ciszewski, Jerry and Elaine  
 Clark, Daniel and Miller-Clark, Mary  
**Clark, Richard and Patricia**  
 Clay Bay Pottery  
 Clay, Erik  
 Cobb, George and Sharon

Cochrane, Pete and Sandy  
 Colin, Mark and Metzler, Melissa  
 Conner, Kathy  
**Corbisier, Alayna**  
 Cosgrove, Michael and Julia  
 Cote, Phil and Miriam  
**Cotter, Tracy and Susie**  
 Coulon, Mae  
 Coventry, Martha  
 Covert, Jack and Ann  
 Cramer, Joe and Donna  
 Crass, Dale and Sue  
 Crayton, John and Mary Ann  
 Crocco, Syndi and John  
 Cross, Andy  
**Cruger, Peter**  
 Culver, Tom and Cheryl  
 Cushing, Marilyn  
 Custer, Mitch and Sandie  
 Czajkowski, Ned and Carol  
 Dahlberg, Daniel and Nancy  
 Dahlman, Jack and Betty Jo  
**Dallmann, Dan and Shirley**  
 Danforth, John  
 Dannhausen, H Richard  
**Darling, Chris**  
 Daubner, Chriss  
 Dauffenbach, Darrin and Dawn  
 Davis, Dale and Jan  
 Davis, Mike and Buchanan, Susan  
**Day, Selene**  
**De Voe, Nick**  
 Deardorff, Stuart and Robyn  
 Debenham, Dave and Sarah  
 DeCock, Dave and Jane

**Degen, Mike and Ziegler, Meghan**  
 Degeneffe, Amy  
 Delaney, Don and Janice  
 DeLong, Paul and Myra  
 Demarest, Courtie  
 DeMaster, Sandy and Larry  
 DeMets, Kathleen  
 DeMint, Tom and Judy  
 Desotell, Larry and Wied, Debbie  
 Detert, David and Joyce  
**Dewalt, Mark and Gail**  
 DeWitt, Anne  
 Dhein, Annette  
 Di Iulio, Helene  
 Dickson Jr, Charles W  
 Dickson, Bob and Liz  
 Dimitrov, Stoyan and Arce, Carolina  
 Dinan, Stephen and Joan  
 Dinesen, Niel  
 Dirst, Victoria and Miller, Allen D  
 Dittmore, Mary and Rick  
 DiVincenzo, Ken and Cathy  
 Dorn, Dennis and Maribeth  
 Dowell, Linda  
**Doyle, Michael and Kristen**  
 Dramm, Hans and Keller, Sarah  
 Dramm, Kurt and Marlene  
**Dresselhuys, Donn and Waldorf, Heather**  
 Drey, Bob and Cynthia  
 Dries, Bob and Jeanne  
 Drouet, Christina and Michael  
 Dubois, Paul and Karen  
 Dude, Annie  
 Duffin, Carol  
 Dugan, George and Susan  
 Dukehart, Tad and Andy  
**Dullard, Steve and Deb**

**Duncombe, David and Skran, Claudena**  
 Dunworth, Bob and Mary  
**Durflinger, Michelle**  
**Durkin, Brendan and April**  
**Durkin, Raymond**  
**Duy, William**  
 Dwyer, Robert  
**Edmundson, John and Maureen**  
 Edmundson, Rob and Cathy  
**Egerer, Lydia**  
**Eggert, Maggie**  
 Ehrbar, June D  
 Elder, Randall  
 Elliott, Rob and Colleen  
 Ellis, James and Karen  
**Ellmann, David**  
 Ellsworth, James and Patti  
 Elmore, Joann  
 Elquist, Roy and Diane  
 Emmerich, Gerald and Signe  
 Engberg, Will and Ava  
**Engel, Gordon**  
 Enroth, Mary  
 Erbe, Julie  
 Erbe, Richard  
 Erskine, Tim and Holly  
 Evans, Tom and Pam  
 Evanson, Robert K  
 Everett, Curtis and Joan  
 Everhardus, Sally  
 Fagiolo, Joseph and Mary  
**Farley, Georgette**  
 Farnan, Laurie A  
 Fear, Rich and Maureen  
 Feirer, Russ and Debbie  
 Feldman, Jason and Holly

**Fenner, Bruce and Christine**  
 Ferris, Ken and Beth  
 Ferry, Mr and Mrs Ken and BJ  
 Fields, Chuck and Carolyn  
 Fink, Robert and Marge  
 Fitchett, George and Judy  
 Fitzpatrick, Joan  
 Flansburg, Ron and Jean  
 Florin, Jack and Gail  
 Fogarty, Myrna  
**Forbes, Sheila**  
 Ford, Chris, Ali, Will and Nick  
 Ford, Deb  
 Ford, Martin and Hilary  
 Foss, Kirby and Margaret  
 Foster, Richard and Mary  
 Frankenfield, Jay  
 Franz, Jeff and Engs-Franz, Ruth  
 Frazier, Jay and Alison  
 Freer, Maynard  
 Frelly, Mike and Don  
 Frunceck, John and Betsy  
 Frunceck, Ron and Theresa  
**Fryda, Erin**  
**Fulwiler, Kathryn**  
**Fye, Chris**  
 Gadiant, Stephen and Margaret  
**Galson, Kerry Knudsen**  
**Gardner, Juliann**  
 Garrity, Jerry and Lois  
 Gaskell, Judith  
 Gaskill, Warren and Sharon  
**Gaspar, Joan**  
 Gaston, Bud and Karen  
**Gatesman, Julie**  
 Gathany, Van and Hildy  
 Gauger, Elizabeth  
 Gawlik, Marilyn  
 Geiger, Cheri  
 Genskow, James and Judy  
**Geoffrion, Tim and Jill**  
 Gerdman, Gil and Lynn  
**Gerl, William and Maria**  
 Gerlach, Wayne and Linda  
 Germain, Cynthia  
**Gianni, Julie**  
 Gilligan, Barbara  
**Gillilan, Bruce and Marta**  
 Gilson, Mike  
 Gimla, Francine  
 Godres, Honneli  
 Goldberg, Larry and Barbara  
**Golobic, Tony and Magda**  
 Goode, Margot  
 Goodrich, Ellen  
 Gordon, Brad and Judy  
 Gorski, Deb and Paul Whitelaw  
 Goss, Tom and Nancy  
**Gottschalk, Fawn**  
 Graff, Jerry and Ann



Photo by Lisa Rosenbush Hendrix



Graham, David and Lizzie  
**Great Northern By Design LLC**  
 Green, Andrew and Louise  
 Greene, Tad and Deb  
 Grier, Cathy

**Griggs, Thomas and Mary**  
 Groenfeldt, Tom and Keli  
 Grzechowiak, Dale and Janda,  
 Melissa

Habschmidt, Jim and Paula  
 Haldane, Diane and Schultz, Richard  
 Hale, Mary Jean

**Hallstrand, Rick and Linda**  
 Halverson, Eric and Judy  
 Halverson, Paul and Gloria  
 Hamann, Jim and Jane  
 Hamersky, Dan and Jean  
 Handrich, Steve and Peggy  
 Hanke, David and Terri  
 Hanreddy, Jami and Joe

**Hansen, Carrie**  
 Hansen, John and Barbara  
 Hanson, Curt and Sarah  
 Hanson, Gretchen

Hardin, Melissa  
 Harding, Ruth and Jeff

**Harkaway, Jill**  
 Harrer, Bernie and Schab, Lisa

Harris, Dave  
 Harriss, Kirtley

Harsch, Roy and Leslie  
 Harsh, Dr David and Ann

**Hastings, Jan**  
 Hat Head - Bob and Bonnie Spielman

Hatch, Mick and Lisa  
 Hauser, Peggy and Tom

**Hauser, Sylvie**  
**Hawker, Richard and Rebecca**

Hayes, Mike and Donna  
 Heath, Dar and Bill

Hebal, Bill and Katie  
 Hedquist, Pat and Susan

Heide, Doc and Jessup, Jody  
 Heier, Richard

Heil, Richard and Carol  
 Hein, Marilyn M

Hellstedt, Linda  
 Henderson, Barbara and Doug

Henger, Gary and Jo Ann  
 Hensge, Bill and Jane

Herbst, Giz and Linda  
 Herbst, James E

**Herlache, Kay**  
 Herlache, Peggy

Hersam, Larry and Joanne  
 Hibbard, Bill and Edith

**Hickey, Dennis and Lynnea**  
 Higley, Bill and Kandy

Hilbert, Ryan and Jessa  
**Hill, Fia and Murray, Howell**

Hilton, Ron  
 Hippler, Steven and Marcy  
**Hoefs, Mark and Kim**  
 Hoelzel, Jim and Linda  
 Hoffman, Gill and Barbara  
**Hoffman, Samuel**  
 Hogan, Michael and Geske, Janine  
 Holada, William and Mary  
 Hole, Sarah

**Hollinger, David and Rosann**  
**Holtz, Susan**

Hoover, Robert and Rebecca  
 Hornick, Mark and Laurel

Horwitz, Bruce and Marla  
**Houston, Mary**

Hubbard, Rich and Rose  
 Hubing, Dan and Kathy

Huff, John and Alice  
 The Huff Family

Hughes, Kate and Tommy  
**Huntoon, Andrea**

Hurckman, Amy  
 Hutchins, Ann L

Hutmacher, Michael and Carol  
**Jacobs, Fred**

Jacobs, Gail  
 Janda, Louie and Rosie

James, Robert and Jillian  
 Jarosh, Sue and Joe

Jaskunas, Richard and Sharron  
**Jehle, Michael**

Jenkins, Mark and Ann  
 Johnson, Donna

Johnson, Jeff and Sue  
**Johnson, Kayla**

Johnson, Marilyn G  
 Johnston, BJ and Linda

**Johnston, David and Jessica**  
**Jonas, Jon**

Jondahl, Thor and Darlene  
 Jones, Debra

Jordan, Raeona  
**Julka, Mike and Vickie**

**Jump, Mary Jo**  
 Jurss, Allan and Sue

Kalb, Judith  
 Kalms, Walter and Michelsen, Patsy

Kalupa, Anthony and Linda  
 Kane, Terrence and Judith

Kanzler, Barbara R  
**Kapellen, Thomas and Judith**

Karch, Rev Katherine and Mr  
 Michael

Karecki, John and Karin  
 Karlo, Ken and Laurel

Kasriel, Paul and Katy  
 Keating, Julie and Terry

Keck, Krista  
 Keefer, Mary and James

Keene, James S

Keene, John  
 Keith, Annie and Hurst, Mark  
**Keith, Stuart, Jackie, Miranda and**  
**Nolan**

Keller, Craig and Kari  
 Keller, Ed and Barbara

Kelly, George and Zatlin, Phyllis  
**Kenny, Eugene**

**Kenny, Gene and Berch-Kenny, Helen**  
 Kepper, Martin and Karen

Kexel, Duane and Jo Ann  
 Khitsun, Andrew

**Kiehna, Susan**  
**Kifer, Rob and Anne**

**Killeen, Nancy**  
**Kimbell, Becky**

King, Mark and Tina  
 Kinsey-Jauquet, Andrea

Kintopf, Alan and Linda  
 Kirgues, Patricia

Kirkland, Diane  
 Kirkwood, Rhonda

**Kirtland-Nottke, Marcia**  
 Klein, Herb H

Klensch, Nick  
**Kloss, Jeremy**

**Klossner, Ron and Susan**  
 Kluessendorf, Lucy and Jerry

Klug, Bill and Gretchen  
 Knapp, Eric and Jeanine

Kneip, David and Ellen  
 Knowles, Richard A J

Knox, Merritt and Julie  
**Knudsen, Andrew and Jen**

Knutson, Jerrold and Melinda  
 Koch, Pam and John

Kochaver, Teresa  
 The David and Kendall Koehler Family

**Koenen, Margaret**  
**Kohn, Bob and Alice**

**Kolacinski, Greg and Kathy**  
**Kolp, Tom and Darlene**

Kozicki, Chris and Jane  
**Kraack, Tim and Jenna**

Krall, Ed and Eileen

Krapf, Wiley and Roselyn  
 Krause, Gerald and Nancy

Krause, Tim  
 Krautkramer, Jim and Cindi

Kreif, Tony and Connie  
 Kretzmann, Conrad T

Kriegsmann, Greg and Barbara  
 Kron, Paul and Karen

Krueger, Dean and Judith  
 Krueger, Tom and Kim

**Krupp, Frank**  
 Kruse, Christopher

**Kruse, Kent and Ginner**  
 Krutek, Paul and Fran

Kuehn, Blake  
 Kuffner, David and Kathleen

Kufirin, Bob and Lainie  
**Kuiper, Irene**

Kupper, John and Koestring, Janet  
 Kupsch, David

Kurtz, Gary and Nancy  
 Kussart, Gene and Pauline

Laluzerne, David and Lynn  
**Lange, Doug**

Laske, Larry and Barb  
**Lasky, Jeffrey and Alexis**

**Last, Peter**  
 Law Office Of Peter McKeever

Lefebvre, Terri and Campshire, Joe  
 Legois, Jason, Jen, Jackson and

Jameson  
**Leline, Paul and Leslie**

Lembck, Diane  
 Lenahan, JC and Brenda

Lenius, Harlan and Sharon  
 Lenius, Pat

Leonard, Judie  
 Lepkowski, Cynthia

Leporte, Lawrence and Elfriede  
 Levar, Frank and Brooks-Levar,

Judith  
 Lewcock, David and Danielle

Lewcock, Jack  
 Lewcock, Joe

Librizzi, Charles  
 Liebmann, Bert and Diane

Lindgren, John and Elsie  
 Lindh, Dana and Marsha

Link, David and Caroline  
**Linnemanstons, Greg**

Linquist, Ann  
 Linsley, Dan and Judy

Livengood, Susan  
 Livingston, Sarah and Jay

Lohmeyer, Charles and Ellen Jane

**Londo, Courtney**  
 Longseth, Richard and Kim

Loss, Robert and Doris  
 Loy, Phil and Judy

Luchterhand, Kubet  
 Lucier, Larry and Jeanne

Luginbill, Kristin  
**Lundberg, Kathy**

Lundh, Christopher and Rebecca  
 Luning, Thomas and Betty

Lurie, Paul and Margaret  
 Lutsey Family Foundation, Inc.

**Lutsey, Tom**  
**Lyday, Mark and Sue**

Lyndahl, Dale and Kay  
 MacEachern, Mike and Alicia

**Mackenzie, Jennifer**  
 Maguire, John

Mahar, Michael and Shaw, Mary  
 Malchow, Jan and Lynn

Mallien, Larry and Barbara  
 Maloney, Edward and Elizabeth

Maples, Larry and Nancy  
 Maras, Jeff and Amy

Markelz, Peter and Karen  
 Marquis, Robert and Kelly, Carol

Martin, Lucy  
 Martin, Max and Dee

Martinez, Tony  
 Masiak, Cory A

Mason, Jeffrey and Elsie  
**Mathee, Jamie and Bettys**

Matousek, Ron and Louise  
 Mayer, Irene

Mayheu, Stephen  
 McCain, Douglas



Photo by David Heilman



Photo by Amy Hagen



# 2020 FINANCIAL SUPPORTERS

Total contributions received during 2020

## McCarthy, Mike

McCluggage, Sandra  
McCurdy, Bob  
McDonald, Marilyn  
McDonough, Emilie  
McKeon, Judi and Tim  
McLeish, Allison  
**Medved, Paul and Danita**  
Meiborg, Diane and Zacek, Roger  
Mellem, Roger and Connie  
Merline, John and Wilkerson, Inger  
Mettel, Carson  
Meyer, Elizabeth  
Meyer, Lee  
**Meyer, Libby**  
Middendorf, Jim and Peg  
Middleton, Fred and Judy  
Miesbauer, Jerry and Kris  
Miller, Bill and Diane  
**Miller, Dan and Anne**  
Miller, Jack and Jane  
Miller, James  
**Miller, Jeff and Kim**  
Mitchell, Judith  
Moeller, Mark and Jennifer  
Molitor, Daniel and Tracy  
Mollberg, Amy  
**Mooney, Brian and Christina**  
Mooney, Debra  
Moore, Bill and Sandy  
Moore, Craig and Karen  
Morgan, Ed and Chris  
Morris, Greg and Terry  
Morrison, Michael  
Mortensen, Daniel and Bassler, Karen  
**Morton, Marianne**  
Moser, Alan and Dianna

## Moses, Marilyn

Motyka, Steve and Mary  
**Mr and Mrs Fred Robertshaw**  
**Mueller, Ed and Mueller, Eve Peterson**  
Mueller, Ken and Judy  
Mulligan, Tom and Elaine  
**Mundy, Alicia and Basil**  
Murphy, Beth  
Murphy, John and Dorothea  
**Murray, Rick and Leslie**  
Murray, Tom and Sue  
Musiel, Tammy  
Mutchler, Leo and Monica  
Needelman, Jerry and Margie  
Neiman, Dick and Judy  
Nelesen, John and Shirley  
Nelson, Bruce and Cindy  
Nelson, Bryan and Holliday, Joan  
Nelson, Doug and Judy  
Nelson, Rick and Barb  
Nelson, Rick and Patty  
Nerenhausen, Mark and Martha  
Neuman, David and Smith, Miranda  
Neuman, Mike and Beth  
Neuman, Pat and Stacey  
Neumann, William C  
Newbern, Karen  
Newlon, Joan  
Newport, Mark and Jan  
Nicolet Bank  
**Normoyle, Brian**  
Notermann, Tom and Carol  
**Nothman, Jan and Jerney**  
Nowak, Peter and Jean Ann  
Ocock, Glenn  
**O'Connor, Steve and Margie**  
**Odell, Staci**  
**O'Dowd, Maryanne**  
**Off The Wheel Pottery**  
**O'Keeffe, Paul**  
**Olson, Chris**  
**O'Malley, Peggy**  
Orthober, Mike and Lorie  
**Otto, Bill and Jane**  
Pagel, David  
**Pagel, Jeep**  
Palmer, Jason and Jamie  
**Pappas, Susan**  
Paral, John and Harriet  
Parent, Steve and Mary  
Parker, Brenda  
**Parr, Justin**  
Parsons, Robin M  
Patera, Edward and Ellen  
Paul, Norman and Amy



Photo by Collin Richter

## Paustian, Glenn and Rom, Patricia

**Pearson, Robert and Patricia**  
Pedersen, Sverre and Falck, Christine  
Penpek, Elaine  
**Peot, Catherine**  
Perkovich, Tawnie  
Peroutky, John  
Peters, Stefan and Glenna  
Peterson, Janet  
Pierson, Cal and Trish  
Pikas, Bruce and Joan  
**Pike, Kay**  
**Pittman, Gene and Karen**  
Ploor, Jerry and Pat  
Polacek, Tom and Lynn  
Popiel, Michael and Sharon  
Popour, Lyle and Nancy  
Porter, Bill and Anne  
**Porter, Karen**  
Potter, Jeffrey and Annie  
Potter, Judy  
Poulton, David and Marlene  
**Price, Suzanne**  
Prindiville, Mary  
Prindle, Peggy  
Propsom, Rich and Bruesch, Jane  
Protz, Jane  
Prout, Steve and Susan  
Quale, Ann  
Quigley, Mike and Mary  
**Quinlan, Michael J and Kathryn M**  
Quinn, Patricia  
Raben, David and Jane  
**Rabjohns, Ronald and Camilla**  
**Radue, Jane and Riopelle, Pat**  
Rafal, Nancy  
Ralston, Doug and Nancy  
**Rank, Steve and Jeri**  
Ranney, Dave and Wright, Pat  
**Reddin, Jake and Sarah**  
**Redling, Bud and Becky**

## Redwine, Julia

Reed, Stephen and Valerie  
Reeve, James and Ann  
Regnier, Paul and Cindy  
Repp, Pete and Shirley  
Reynolds, Jean  
Richard, Carrie  
Richrath, Scott  
Rieder, John  
Riley, John and Lynn  
**Riley, Melanie**  
Rintelman, JR and Linda  
Ripp, Dave  
Risser, Joyce  
Rix, Bill and Jerri  
**Robbins, William**  
**Rock, Tess**  
**Rockenstein, Walter and Jodel**  
**Roesch, Louis and Carole**  
**Roever, Philip and Rebecca**  
Rogers, Pete and Fawn  
Romano, Eileen  
**Rose, David and Margaret**  
**Rosenthal, Becky**  
Rosenthal, Deborah  
**The Roth Family**  
Rothschild, John E  
**Roughen, Douglas and Jane**  
Rowdon, Noelle  
**Rowe, Kathy**  
**Rowings, James**  
**Rugg, Mr and Mrs Brian C**  
Runez, Barbara  
**Rupnow, Judy**  
**Rusnak, Morgan**  
Rutledge, Ham and Chari  
**Rutter, Zeb**  
Ryan, Bob and Sue  
The Gerald Ryan Family  
Ryder, Ingrid

Sadler, Frank and Annie  
Sajna, Barbara  
Samson, Steve and Peggy  
Samuelson, Lane  
Sanford, Lynda  
Santilli, Bob and Gloria  
Santora, Gery and Jackie  
Sargent, Nancy

## Saron, Brandon and Christine

Saron, Gordon and Dianne  
**Sautebin, Bruce and Chris**  
**Sawicki, Randall**  
Scattergood, Kirk and Donna  
Schaefer, John and Sandra  
**Schaefer, Lora**  
Scheinoha, Chad and Jenny  
**Scherer, Mark and Jean**  
Schluter, Ernest and Betty  
Schmidt, Kenneth and Rebecca  
**Schmidt, Stephen**  
Schmitt, Mark and Sandi  
**Schmitz, William and Donna**  
Schneider, Allan and Betty  
Schneider, Thomas and Jane  
Schomburg, Jerry and Ronda  
Schoof, Roger and Katherine  
Schrantz, Ann  
Schudson, Charlie and Karen  
Schueppert, Tom and Mac  
Schuh, Dale and Annette  
Schuster, Bill  
Schuster, Carol  
Schwaller, Gerry  
Scott, Carol  
Scott, Ron and Sharon  
Scripp, John and Susan  
Seagren, Warren and Barbara  
**Secor, Richard**  
Seegers, Dale and Cynde  
**The Seidel Family**  
Seidl, Dan and Jane  
Seiler, Jeff and Sally  
Selenica, John and Jody  
Selke, Esther  
Serrahn, Janet  
Serrahn, Robin  
Shappell, Dick and Dottie

## Sharpe, Pat

**Shea, Bryon**  
Shelgren, Lois  
**Shemanske, Susan and Wicklund, Peter**  
Sherwood, Deb and Pete  
Sholem, Stanford and Susan  
Shoreline Charters, LLC  
**Siedschlag, John and Virginia**  
Siekman, Dianne  
Sijgers, Robert and Reid, Christine  
Sikora, David and Matzelle, James  
Silverwood, George and Patricia  
Simons, Paul and Bonita  
Simpson, Mona B  
**Sitte, Murray and Kathy**  
Skaff, Larry and Franie  
Skahen, Dennis and Marguerite  
Skoglund, Bob and Janet  
Skogsbakken, John and Pat  
Skrivanie, Oliver and Lynn  
Slater, Cathy and Doug  
Slavik, Richard and Mary  
Slovin, Nathan and Julie  
**Smile Designs of Door County**  
Smith, Babs  
Smith, Ed  
Smith, Gary and Dianne  
Smith, Greg and Alice  
Smith, Ken and Nolde, Judy  
Smith, Lee and Sue  
Smuda, Jerald  
**Sokul, George and Chrissy**  
Sorensen, Larry and Kathleen  
Spangler, Mary S  
Sperberg, Elizabeth  
Spitzley, John and Judy  
Spoerke, Robert  
Sprague, Mark  
Spude, Donald Lloyd  
**Squire, Marie**  
St Dennis, Aletha  
Steffens, Jayne  
Stein, Harry and Heimerl, Kristine  
Steiner, Bruce and Carol  
**Steinle, Michael and Sarah**



Photo by Elizabeth Wood

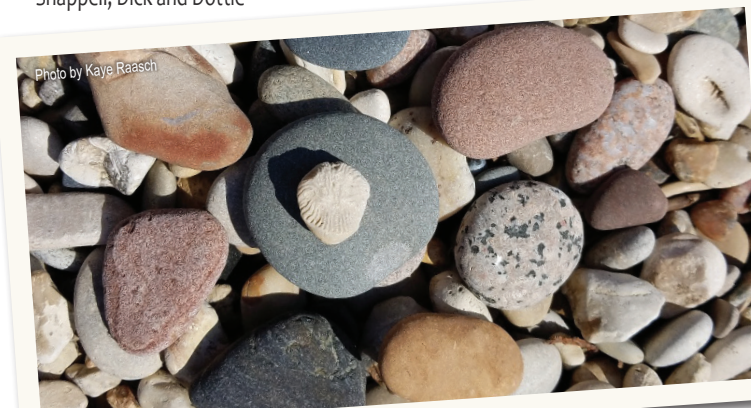


Photo by Kaye Raasch



Stenger Riplinger, Cynthia and Riplinger, Mike  
 Stenzel, Gary and Sue  
 Stevens, Bill  
 Stoelting, Paul and Carol  
 Stonypath LLC  
 Stordeur, Margie  
 Stowe, Dennis and Kathy  
 Stowell, Janice Y  
 Strauch, Dave and Marie  
 Strelow, Larry  
 Stricklin, Carol and Glenn  
 Stringer, Steve and Jan  
 Studio 768 LLC  
 Sucharda, Rick and Sue  
 Sullivan, Bob and Rita  
**Sullivan, Matt, Maurice and Logan**  
**Sumnicht, Steve and Karen**  
**Swanson, Lewis**  
 Swearngin, Sherry  
 Sweeney, Josh and Meredith  
**Taddy, Christina**  
**Takle, Miriam and Eugene**  
 Tanck, Glen and Lou Ann  
 Tank, Rick and Kathy  
 Tarczewski, Eugene and JoAnn  
 Tarkowski, Jim  
 Taylor, Charles  
 Theisen, Mary E  
 Thohtne, Dan  
**Thompson, John and Sheffler, Linda**  
 Thompson, Linda  
 Thompson, Marti  
 Thomsen, Catharina H  
**Tibbetts, Jim and Drew**  
 Tilton, Dave and Oeler, Paula  
 Tomchaney, Paul and Linda  
 Toneys, Mike and Carrol  
 Top O' The Thumb Snowmobile Club  
 Toth, Susan and Peirce, Nancy Jane  
 TR Pottery LLC  
 Tranquilli, Bill and Sue  
**Trebotich, Michael**  
 Turner, Ron and Millie  
**Upward, Meredith**  
**Urban, John and Kris**  
 Valitchka, Luke and Sherri  
 Van De Carr, Lawrence and Janet  
 Van de Ven, Ann and Richard  
 van Duym, Dirk and Siegner, Katherine  
 Van Houten, Bruce and Becky  
 Vandenberg, Kathryn  
 Vass, Joe and Barbara  
 Vavra, Kerry  
 Veremis, J  
 Veremis, M  
 Villota, Gwynne  
 Vincent, Jennifer  
 Virlee, Richard "Biz" and Sharon

Voeks, Susan  
 Voight, Dennis and Lisa  
 Vuksanovic, Cathy  
 Vytlicil, Rhea  
**Wagner, Adrian and Judy**  
 Waitkus, Phil and Audrey  
**Walden, Mary**  
**Waldner, David and Claire**  
 Waldron, Steve and Laura  
 Walesh, Steven  
 Wallace, Carl and Darcy  
 Wallace, Linda  
 Wallner, Joseph and Elizabeth  
 Walsh, Bill and Adele  
 Walsh, Jim and Ann  
 Walwark, James and Polly  
 Walz, Dennis  
 Warth, Robert and Mary  
**Warwick, Rachel**  
 Watson, Al and Maribeth  
 Weber, Mary  
 Webster, Bobbie  
**Weidman, Richard and Mari**  
 Weis, Jane W  
 Welch, Nancy and Plank, David  
 Wellhausen, John and Donna  
 Welsing, Pat and Jane  
**Wentland, William and Lisa**  
 Wergin, Dan and Carol  
 Westen, Dave and Liz  
**Westenberger, Debbie**  
 Whipple, Thomas and Christine  
**Whisman, Carolyn**  
 White, Bill  
**White, Jed**  
 Whitney, Susan  
**Wiegman, Tim and Cathy**  
**Wienke, Jeff and Lin**  
 Wilde, Greg and Jean  
**Willems, Charles and Sarah**  
 Willer, Mary  
 Williams, Lee and Becky  
 Williamson, Jim and Betsy  
**Wilson, Lynn**  
 Wilson, Mary E  
 Wilson, Todd and Joan  
 Wilson, Tom and Barb  
 Winzenz, Jerold and Karon  
 Wise, Karl and Jane  
 Wissink, Steve and Janet  
 Woelfel, Dan and Arlene  
 Woelfel, David and Joy  
 Wolf, Barbara  
 Wolf, Duane and Bonnie  
 Wolf, Terry and Debbie  
 Wolfenberger, Jim and Janet  
 Wolst, Henk and Buttons  
 Wolter, Kirk and Mary Jane  
 Wolter, Rich and Cindy  
 Wood, Patricia

Wulle-Dugan, Kate  
 Wyandt, Dorothy  
**Yocius, Rich and Karen**  
**Young Blood Beer Company**  
 Young, Kenneth E  
 Young, Larry and Kate  
 Young, Norma  
 Yunker, Bill and Virginia  
 Zamora, Margarita and Green, Judith  
 Zapotocny, Douglas  
 Zehr, Alison  
 Zeldenrust, Lucy  
 Zeller, Dwight and Pamela  
 Zeller, Peter and Lisa  
 Zeratsky, J Bur  
**Zero Sum Muffin Shop**  
 Ziemann, Jan  
 Zilavy, Jack and Barbara  
 Ziman, Rudy and Shirley  
 Zimonick, Chris and Hermanson, John  
**Zolnosky, Mike and Linda**  
 Zwick, Kenneth and Hollar, Carol  
 Zwiefelhofer, Peter and Sarah

## IN-KIND GIFTS

Abrahamson, Theo and Jan  
 IN-KIND GIFTS  
 Heilman, David  
 Janning, Jim and Donna  
 Ottum, Jeff and Barb

## MATCHING GIFTS

Abrahamson, Theo and Jan  
 Aetna Foundation  
 AmazonSmile Foundation  
 American Family Insurance  
 Ameriprise Financial, Inc.  
 Bank Of America  
 Caterpillar Foundation  
 Chevron  
 Energy Management Collaborative  
 Exelon Foundation  
 Google, Inc.  
 Hatco Corporation  
 IBM  
 Johnson Controls Foundation  
 Kimberly-Clark  
 Microsoft  
 Morgan Stanley  
 Northwestern Mutual  
 Nsighttel Wireless, LLC/DBA Cellcom  
 SAP  
 Thrivent Financial/Thrivent Choice  
 Uline

# Protect the lands and waters you love... forever.

*Our commitment to protecting Door County's  
exceptional lands and waters is forever.*

*You can help protect the land you love by  
making a gift that will last forever.*

*Make a gift through your will, trust,  
retirement accounts, or life insurance*



### The Legacy Circle

When you inform the Door County Land Trust of your intent to make a planned gift, you will be welcomed into the Legacy Circle, a group of benefactors who have indicated that the Land Trust has been included in their estate plans.

For more information, contact Director of Charitable Giving Cinnamon Rossman or Executive Director Tom Clay at [giving@doorcountylandtrust.org](mailto:giving@doorcountylandtrust.org) or (920)746-1359.

**[DoorCountyLandTrust.org/PlannedGiving](http://DoorCountyLandTrust.org/PlannedGiving)**



## 2020 VOLUNTEERS

Andrae, Marjorie  
Barnes, David  
Barrett, Jean  
Blackwood, Tom  
Blahnik, Judith  
Budic, Ruth  
Bunker, Sally  
Cochrane, Carl  
Degeneffe, Amy  
DeNardo, Donna  
Deschler, Peter



Photo by Jeff Lusey

Di Iulio, Helene  
Eggert, Dan  
Finger, Diane  
Finger, Jack  
Fiorato, Cathy  
Fortin, Guy  
Frank, Barbara  
Friedberg, Gerri  
Glasser, Linda



Photo by David Heiman

Glasser, Mark  
Goodner, Dale  
Goodner, Mary  
Hagman-Shannon, Deb  
Hake, Donna  
Hartman, Mary  
Heilman, David  
Holey, Mark  
Holm, Randall  
Jacobs, Gail  
Klug, Lucy



Photo by Jamie Palmer

Kruse, Chris  
Lester, Jim  
Ling, Bob  
Lokken, Ron  
Lukes, Charlotte  
Maloney, Laura  
Maloney, Ron  
Martin, Mark  
McCutcheon, Windsor



Photo by Mary Van Dyke

Miller, Diane  
Miller, Jason  
Mullaney, Gail  
Nelson, Bryan  
O'Grady, Mary  
Ottum, Jeff  
Palmer, Jamie  
Pepelnjak, Anna  
Perkins, Judy



Photo by Mary Goodner

Perry, Jim  
Peters, Glenna  
Peters, Stefan  
Radtke, Al  
Rossman, Grace  
Samida, Judy  
Sauve, Bill  
Schaars, Bill  
Schmelzer, Gretchen  
Schuster, Bill  
Stewart, Ruth



Photo by Jamie Palmer

Stone, Matt  
Swanson, John  
Taylor, Joe  
Thilly, Mary  
Thilly, Roy  
Van Gemert, Rob  
Walsh, Melody  
Watson, Rob  
Wessels, Bill



Photo by Mari-Jo Young

Wessels, Trudy  
Wick, Cindy  
Wick, Tim  
Wilcox, Jock  
Wilcox, Karen  
Wolf, Debra  
Wolff, Kathy  
Yancey, Karen

*thank you!*

## VOLUNTEERING IN THE YEAR AHEAD...

Door County Land Trust was first formed 35 years ago by a group of committed volunteers, and to this day, volunteers continue to share their commitment to the mission in profound ways. Last year, to keep both staff and volunteers safe, we had very few opportunities to work together, to build camaraderie, or to take pride in a task accomplished together.

While things are not yet fully back to normal, in the coming seasons we look forward to opportunities for volunteers to work together to restore landscapes, improve our trails and kiosks, and share stories and photographs from Land Trust members.

**Volunteer for the 'Shoreline at the Edge' book project:** Orders for Door County Land Trust's new book 'Shoreline at the Edge' will be packaged and handled by volunteers in a new partnership with Sunshine Resources. Beginning in mid-July, we will meet Mondays from 9am-12pm and Fridays 9am-12pm and 1-2:30pm.

Sign up for this opportunity and learn about other opportunities as they arise by visiting our website at [www.DoorCountyLandTrust.org/signup](http://www.DoorCountyLandTrust.org/signup).

## CALLING ALL PHOTOGRAPHERS!

Have you noticed the incredibly gorgeous photographs on all of Door County Land Trust's publications, Facebook, and Instagram pages? All of these photos are submitted by members and volunteers just like you. If you happen to take a great photo on the nature preserves, we hope you'll send it in for one of our future publications! Here are a few tips for taking great nature photos to share with fellow members...

1. Set your camera or phone to the highest resolution possible.
2. Take multiple shots, vertical and horizontal.
3. Leave some extra space around the focal point so pictures can be cropped to just the right size.
4. Know your invasive species. We choose photos of native species first.
5. People pictures are always welcome! We love seeing happy hikers on the trails!
6. Include your name and the location in the photo file name, like "Kangaroo Lake by George Eastman."
7. Upload your photo directly so they aren't downsized during email. Visit [www.DoorCountyLandTrust.org/photos](http://www.DoorCountyLandTrust.org/photos).



## DOOR COUNTY LAND TRUST STAFF TEAM CONTINUES TO GROW

We often say that protecting Door County's land is just the beginning. If we want to preserve the Door County we know and love, caring for the lands under our protection is where the true effort to maintain and enhance our native wildlife habitats begins. Being good stewards of the land makes all the difference for the rare and threatened species that need our help.

Whether it is pulling invasive garlic mustard that threaten rare native wildflowers on the forest floor, or battling the thickets of buckthorn, honeysuckle, and autumn olive that quickly crowd out native plants, the Land Trust has an obligation to preserve the ecology of Door County's exceptional lands and waters. With more than 8,600 acres now under protection—and new invasive species threatening Door County—the efforts to care for protected lands are of utmost importance.

Door County Land Trust is pleased to announce our newest staff member, Ecological Restoration Assistant Tina Lee. Tina comes to us with past experience working for The Nature Conservancy and brings a wealth of knowledge that will help improve critical habitats. As the Ecological Restoration Assistant, Tina fills a critical role by assisting with inventorying species, conducting habitat restoration, mapping, updating land management plans, and implementing other land stewardship activities. Tina has a B.S. degree in Conservation and Environmental Science from the University of Wisconsin – Milwaukee. During her free time, she enjoys canicross, hiking, and biking. If you hike frequently, you may find Tina working at one of our nature preserves or natural areas.



**Career Opportunity** The Door County Land Trust now employs 10 full-time and 1 part-time staff member. In addition, the Land Trust is currently seeking applicants for a newly created position of Land Protection Project Coordinator or Specialist. This new hire will assist with all aspects of land acquisition, by assisting with real estate transactions, due diligence tasks involving surveys and appraisals, as well as ecological assessments. Applications are due by July 9. For more information on career opportunities, please visit [www.DoorCountyLandTrust.org/careers](http://www.DoorCountyLandTrust.org/careers).

Join us in thanking our Annual Business Members!



Alibi Marina and Harbor Guest House  
Ashbrooke Hotel  
Blue Dolphin House  
Brilliant Marketing  
Brown County Graphics  
Door County Courier  
Door County Eye Associates  
Door County Nature Works  
Door County Premium Rentals  
Door Landscape & Nursery

EcoDoor, LLC  
Ecology  
First Light Arts, Jim Perry  
Glidden Lodge Beach Resort  
The Garden Lady, Beth Coleman  
Gills Rock Stoneware  
Grasse's Grill  
Impressions Printing and Graphics  
Out of the Woods Woodworking, Curt Wessel  
Pinkert Law Firm, LLP

RentShadowLawn.com  
Ross Estate Planning  
Smile Designs of Door County  
Sunnypoint Landscape  
Terra Cottages  
Dr Timothy Tishler, DDS  
True North Real Estate  
Wagon Trail Campground  
Washington Island Ferry Line  
Wickman House Restaurant

**Business Member donations help to protect Door County's lands and waters. And, Business Members experience great marketing visibility too! See your business logo around the county on the Door County Land Trust hiking map, Nature Notes calendar, and more. For information about business and corporate giving, please contact Director of Charitable Giving Cinnamon Rossman at (920) 746-1359 or [giving@doorcountylandtrust.org](mailto:giving@doorcountylandtrust.org).**





# Door County Land Trust

*Protecting Door County's Exceptional Lands and Waters...Forever*

(920) 746-1359 • [www.DoorCountyLandTrust.org](http://www.DoorCountyLandTrust.org)

PO Box 65, Sturgeon Bay, WI 54235



- Sound Finances
- Ethical Conduct
- Responsible Governance
- Lasting Stewardship



Following our Trails?

Follow us on Facebook & Instagram!

Find links at [DoorCountyLandTrust.org](http://DoorCountyLandTrust.org)

***“Marvel over the beauty in company with  
the poet of our woods, the white birch.  
It is Door County at its best, it is true art.”***

**— Emma Toft**

from *“Toft Point: A Legacy of People and Pines”* by Roy Lukes