

# Landings

Journal of the Door County Land Trust

A Year of  
Discovery  
Ahead



Door County Land Trust

Protecting Door County's Exceptional Lands and Waters...Forever



# Protect the lands you love... forever.

Our commitment to protecting Door County's  
exceptional lands and waters is forever.

You can help protect the land you love by  
making a gift that will last forever.

Make a gift through your will, trust,  
retirement accounts, or life insurance



## The Legacy Circle

When you inform the Door County Land Trust of your intent to make a planned gift, you will be welcomed into the Legacy Circle, a group of benefactors who have indicated that the Land Trust has been included in their estate plans.

For more information, contact Development Director Cinnamon Rossman or Executive Director Tom Clay at [giving@doorcountylandtrust.org](mailto:giving@doorcountylandtrust.org) or (920)746-1359.

[DoorCountyLandTrust.org/PlannedGiving](http://DoorCountyLandTrust.org/PlannedGiving)



## Door County Land Trust

Protecting Door County's Exceptional Lands and Waters...Forever



### The Staff of the Door County Land Trust

From left: Drew Reinke, Tom Clay, Mary Van Dyke, Cinnamon Rossman, Julie Schartner, Amy Dwyer, Amanda Pyke, Terrie Cooper, Jesse Koyen, and Kristi Rice.

#### STAFF

Executive Director  
Tom Clay

Community Conservation Director  
Terrie Cooper

Administrative Assistant  
Amy Dwyer

Land Protection and Stewardship Specialist  
Jesse Koyen

Stewardship and Restoration Manager  
Amanda Pyke

Conservation Easement Program Manager  
Drew Reinke

Administrative Director  
Kristi Rice

Development Director  
Cinnamon Rossman

Land Program Director  
Julie Schartner

Communications Coordinator  
Mary Van Dyke

Office: 23 N. Fifth Avenue

Mailing: PO Box 65, Sturgeon Bay, WI 54235

Phone: (920)746-1359 • Fax: (920)746-1024

Email: [info@doorcountylandtrust.org](mailto:info@doorcountylandtrust.org)

[www.DoorCountyLandTrust.org](http://www.DoorCountyLandTrust.org)

#### BOARD OF DIRECTORS

President	Jean Barrett
Donna DeNardo	Tom Blackwood
President-Elect	Jack Finger
Donna Hake	Peter Deschler
Treasurer	Barbara Frank
Roy Thilly	Mark Martin
Secretary	Bryan Nelson
Rob Watson	Judy Perkins
Past President	Gretchen Schmelzer
Jeff Ottum	Kathy Wolff
	Karen Yancey

#### EMERITUS BOARD MEMBERS

Nancy Aten	Jim Lester
Bob Barlament *	Judy Lokken
Mike Brodd	Paul Mahlberg
Dan Burke	Neil McCarty
Fran Burton	John McMahon
Dave Callsen	Beverly Njaa *
Beth Coleman	Kevin Nordahl
Andy Coulson	Frank Pechman *
Robert Cowles *	Nancy Rafal
Sharon Donegan	Kate Rohrer
Frank Failing *	Carl Scholz
Cathy Fiorato	Neil Shadle
Robert Forsberg	Oliver Skrivanie
Darlene Forsberg	Mary Standish
Ken Gill	Tim Stone
Betsy Guenzel *	Bill Tischler *
Julie Guilette	John Turner
Chan Harris *	Kieth Van Dyke
Tony Haswell	Rob Van Gemert
Jon Hollingshead	John Wilson *
Laurel Hauser	Robert Yeoman
Jim Janning	Bill Yunker *
John Jessup	Virginia Yunker *
Jim Ingwersen *	Elizabeth Zimmerman
Jim Kinney	James Zimmerman *
Lucy Klug	
Lon Kopitzke	
Terry Lappin	

\* Founding  
Board Member



## A YEAR OF DISCOVERY AHEAD

Dear Friends,

I wonder how many of us sip our morning coffee and consider our relationship with nature. If you strategically place copies of Aldo Leopold's *A Sand County Almanac* around your home (bedside and kitchen table for starters), you may well begin thinking about what keeps you warm on frozen winter mornings or why geese arrive in March carrying "the conviction of a prophet who has burned his bridges."

This year, the world celebrates the 70th anniversary of the publication of *A Sand County Almanac*. And here at Door County Land Trust, our work follows in the spirit of Leopold's land conservation ethic, "That land is a community is the basic concept of ecology, but that land is to be loved and respected **is an extension of ethics.**"

Acting on our ethics every day could change the world—beginning with the lands and waters we know personally—our beloved Door County.

Land Trust staff has declared this the 'Year of Discovery' in anticipation of new research and work that will set the stage for stronger conservation. But, the theme carries through all our work, and extends into the community as an invitation to **join us on the journey to discovery.**

Within these pages, you'll find ways that you can bring your land ethic to life—show your love and respect for our lands and waters by putting your land ethic in action. Discover your citizen science niche. Discover the conservation value of your land. Discover the value of your membership contribution. Discover your legacy...and pass it on to the next generation.

Join us on this exciting journey. And, let's work together—as a community of plants, animals, and people dependent on healthy soils and clean waters—to bring our land ethic to life.

Yours in conservation,



Tom Clay  
Executive Director



Aldo Leopold near his Baraboo shack in 1946



Not only are the bright chirps from the spring peeper an early indicator of warmer weather, they are also an indicator of the health of our lands and our community—the audible extension of our ethics in action. As Aldo Leopold wrote, "...land is a community..." As all of us—you and the Land Trust—work together, we ensure all life thrives on the greater peninsula, our islands, and our waters.



# THE KNOWLES-NELSON STEWARDSHIP PROGRAM



**Knowles-Nelson is for Wisconsin's water, wildlife, and our way of life.**

The Wisconsin Legislature created the Knowles-Nelson Stewardship Program (KNSP) in 1989 to preserve valuable natural areas and wildlife habitat, protect water quality and fisheries, and expand opportunities for outdoor recreation. Since the inception of the fund, Door County Land Trust has received funding to protect more than 3,800 acres.



Grand View Scenic Overlook and Park

**The fund has helped to protect Door County's most special places...**

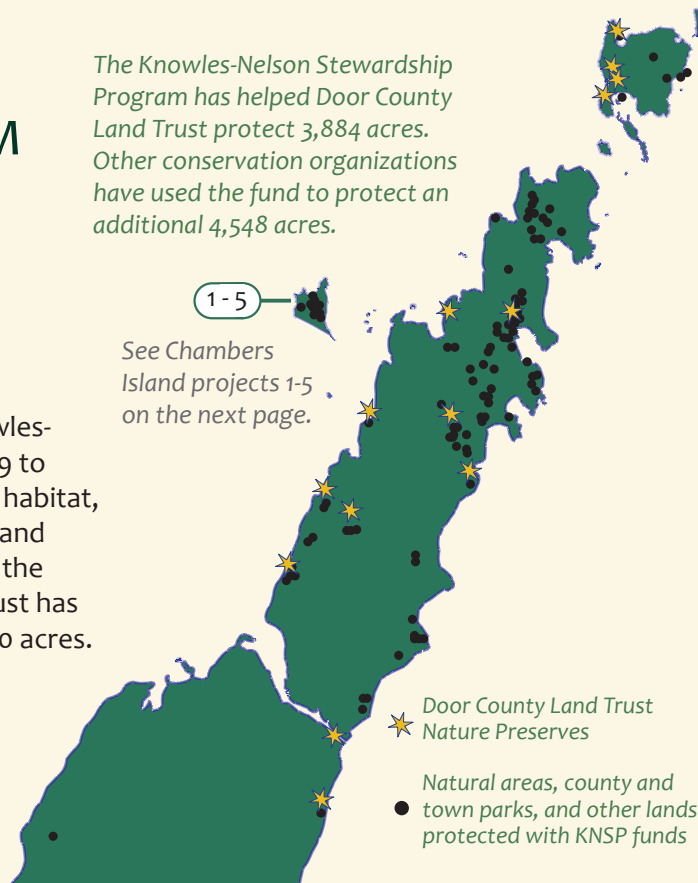
Ahnapee Trail, Baileys Harbor Boreal Forest, Baileys Harbor Marina, Brussels Town Park, Brussels Town Picnic Area, Cana Island Park, Cave Point County Park, Door County Fair Park, Egg Harbor View Park, Ellison Bluff County Park, Ephraim Village Wetland Park, Garrett Bay Town Park, Grand View Scenic Overlook and Park, Jacksonport Lakeside Park, LaSalle Park, Meridian Park, Mink River Estuary, Murphy Park, North Bay Natural Area, Otumba Beach, Shivering Sands Natural Area, Sister Bay Waterfront Park, Sturgeon Bay Festival Waterfront Park, and many more!

## Help Renew the Knowles-Nelson Stewardship Program

The governor and state legislature must act to renew and strengthen the Knowles-Nelson Stewardship Program in their 2019 budget or the fund will soon expire. Now is the time to act! Please ask your legislators to renew this important program. Wisconsin residents—*just like you*—can ensure that we have the tools to care for Wisconsin's land, water, wildlife, and way of life by advocating to protect the Knowles-Nelson Stewardship Program. Our partners at *Gathering Waters: Wisconsin's Alliance for Land Trusts* invite you to join Team Knowles-Nelson today. Visit [teamknowlesnelson.org](http://teamknowlesnelson.org) for more information.

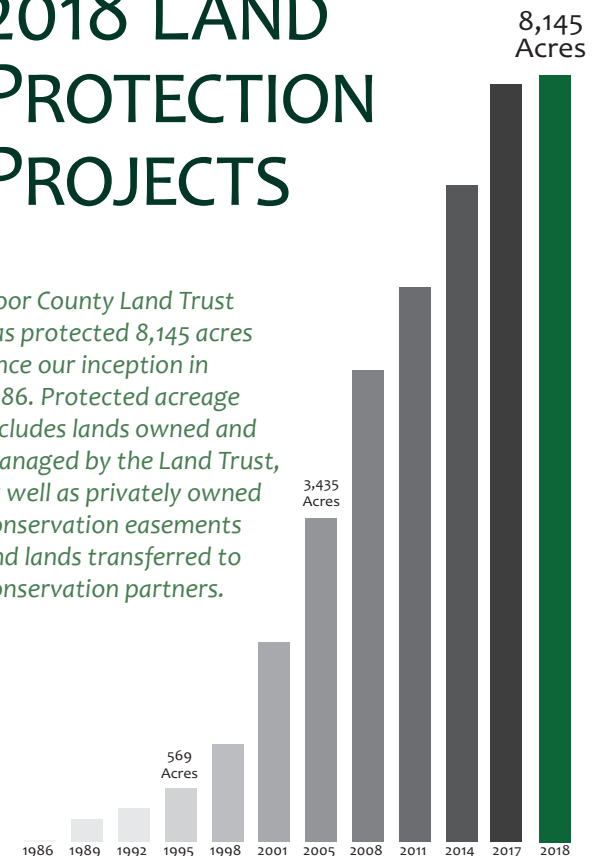


The Knowles-Nelson Stewardship Program has helped Door County Land Trust protect 3,884 acres. Other conservation organizations have used the fund to protect an additional 4,548 acres.



## 2018 LAND PROTECTION PROJECTS

Door County Land Trust has protected 8,145 acres since our inception in 1986. Protected acreage includes lands owned and managed by the Land Trust, as well as privately owned conservation easements and lands transferred to conservation partners.







## Vision Becomes Reality at Chambers Island Nature Preserve

With the five new additions at the Chambers Island Nature Preserve completed in 2018 and approximately 100 acres planned for protection in the coming year, almost all of the island's most important areas of interior forest and inland lakes are protected.

The Chambers Island Nature Preserve began with conversations among island landowners about the future of their beloved island. Their concern was the possibility of division and development as land was passed along from one generation to the next. In 2013 these conversations led to a shared vision among islanders and the Door County Land Trust to create a nature preserve on Chambers Island in order to 'Save—Sustain—Study.' The work toward these ends has been significant, and the Door County Land Trust is proud to partner with a group of individuals who have such a strong conviction to protect the lands they love.

**Save** Over the past year, 96 acres were protected, bringing the nature preserve to 690 acres. Key wildlife habitats have been protected, including significant areas of contiguous forest, Door County's only leather-leaf muskeg bog, portions of Lake Mackaysee shoreline, and its two interior islands. Islanders have played a lead role in raising the private funds necessary for the preserve, far exceeding other projects which rely more heavily on grant funding. Just over 62% of the total cost of the acquisition has been donated or pledged by islanders to date! State and Federal grants have funded the remaining 38%.

**Sustain** Following the initial land protection, efforts shift towards the long-term care of the lands. The vision to sustain the Chambers Island Nature Preserve includes caring for the island's unique plant and wildlife communities to promote healthy land and water. Sustainable forest management, detecting and eradicating invasive species, and protecting sensitive habitats like the muskeg bog, inland lake, and contiguous forest canopy, ensures a natural balance on the island to sustain native plants and wildlife. Last fall, the Land Trust continued the work of islander Debbie Feirer to remove *Phragmites* along the shoreline of Lake Mackaysee with financial assistance from USFWS Partner Grant and Cellcom Green Gifts Grant.

**Study** Inspired by their love of nature, landowners are actively collecting, recording and contributing to the study of the island. Islanders helped coordinate and host a four-day BioBlitz during the summer of 2018 to document the plant and animal species of the island, adding to the wealth of scientific information collected over the years. Islanders are leading multiple ongoing research projects, including photographic documentation of island bird, butterfly, and insect species, a study of island breeding birds, a small mammal study, and Monarch butterfly propagation.

- 1 **Lake Mackaysee Islands, Chambers Island Nature Preserve** The two islands, just over two acres, protect critical habitat for migratory birds, and have played host to nesting bald eagles for many years.

*Door County Land Trust thanks the Town of Gibraltar for their partnership to protect these islands.*

- 2 **Northern Mesic Forest, Chambers Island Nature Preserve \*** 35-acre purchase of high priority wildlife habitat and forested uplands adjacent to protected lands in the northern area of the nature preserve.

- 3-4 **Hemlock Forest and Muskeg Bog, Chambers Island Nature Preserve \*** 50-acre addition includes a hemlock forested property adjacent to the north end of the nature preserve and a key parcel adjacent to the southeastern section of the leather-leaf muskeg bog.

- 5 **Northern Mesic and Hemlock Forest, Chambers Island Nature Preserve** 9-acre donation of land near the western shore of the island connects two larger areas of the nature preserve and is known to be a nesting area for bald eagles.

\* Protected in part with funds provided by the Environmental Protection Agency's Great Lakes Restoration Initiative.





# A YEAR OF DISCOVERY AHEAD

## Citizen Monitoring Projects Across Door County

Wisconsin's history with citizen science began with a single Wisconsin birdwatcher who participated in the Christmas Bird Count in 1900. The Wisconsin Citizen-Based Monitoring Network was born in 2004 to house the growing number of projects in the state. In celebration of their 15th anniversary, we invite you to become part of a citizen science project.

Learn how to count birds or monitor frogs and contribute to Door County's citizen science projects. Your help is essential for these projects that propel research and land protection. The data and information we can collect in Door County will tell the success story of our conservation efforts—and will show changing environmental factors including climate, invasive species, and water quality.

Contact us to become a part of Door County's skilled citizen scientist group so we all may learn from the land!



### Bat Roost Monitoring

A single little brown bat can consume up to 1,000 mosquito sized insects in one hour! **Three Springs Nature Preserve** is home to a large colony of little brown bats—and it's no wonder! Wetlands at the nature preserve provide a plentiful diet for bat mothers and their young. The Wisconsin Bat Program is key to understanding the effects of White Nose Syndrome which has had a devastating impact on Wisconsin bat populations.



### Wisconsin Frog and Toad Survey

A healthy frog and toad population is a sign of healthy wetlands, so declines in frog population can be an early indicator when something has gone wrong. Frog counts at **Ephraim Preserve at Anderson Pond** and **Three Springs Nature Preserve** are included with other statewide data. The study began in 1984—making this one of the longest running amphibian monitoring projects in North America.



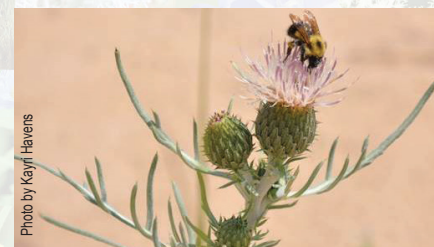
### Sucker Migration Monitoring

Is climate change affecting the migration of spawning fish? Shedd Aquarium researcher Karen Murchie is coordinating efforts at sites around Lake Michigan to help answer the question. **Heins Creek Nature Preserve** is among three Door County sites in the study.



### Wisconsin Breeding Bird Atlas II

**Chambers Island Nature Preserve, Three Springs Nature Preserve, Bay Shore Blufflands Nature Preserve, Sturgeon Bay Ship Canal Nature Preserve, and the Legacy Nature Preserve at Clay Banks** are four Door County sites to be included in this four-year, statewide study of nesting and breeding birds. Using a combination of observation data and point counts, the collected data track important regional trends.



### Pitcher's Dune Thistle Monitoring and Research

Chicago Botanic Garden tracks the federally threatened plant at a number of sites around the Great Lakes and has shown the **Sturgeon Bay Ship Canal Nature Preserve** is home to the healthiest population of the thistle at any of the sites they study. Researchers track the population, bloom time, and native pollinators at the site. The data tells the story of how this plant provides a critical food source for pollinators at a time when no other plants on the dunes are blooming. Without the thistles, dune pollinators are in jeopardy too.





## Discover Your Love of Science

### Door Peninsula Coastal Wetlands



June 21, 2019

### Three Springs Nature Preserve

Conservation partners join together to research and inventory lands protected by University of Wisconsin-Green Bay at Toft Point, The Ridges Sanctuary, and the Door County Land Trust's **Three Springs Nature Preserve**.

These lands are tied by common features: low-lying wetlands and cedar swamps, cool lake temperatures, and a remnant boreal forest that advanced with the cool micro-climate of slow-moving glaciers 10,000 years ago. The landscape is known as the *Door Peninsula Coastal Wetlands*—one of only 38 sites in the US designated by the Ramsar Convention of Wetlands of International Importance.

Volunteers are invited to participate in BioBlitz research! Become a scientist for a day and work alongside staff and researchers to document the species found here. The collected data will be used as a baseline for future studies, which may show changes over time. Visit [doorcountylandtrust.org/BioBlitz](http://doorcountylandtrust.org/BioBlitz)

## Discover Your Land's Conservation Value

In our 'Year of Discovery' we invite you to discover your conservation vision and the potential of your land. Private landowners can partner with the Land Trust to protect their property with a conservation easement. Conservation easements can protect a variety of lands, including wild places, undeveloped spaces, and even farmland. Conserving your land with Door County Land Trust may even have a charitable contribution benefit.

For more information, visit [doorcountylandtrust.org/CE](http://doorcountylandtrust.org/CE)

## Discover Your Volunteer Niche

Volunteers contribute their unique time and talent to the Land Trust in so many ways! Contact us to find your niche. Here are just a few of the ways volunteers help make our work possible:

- Maintain trails, monitor invasive species, collect litter, and other outdoor work.
- Become a Hike Leader.
- Office work and mailings.
- Take photos or write stories about special projects.
- Host or volunteer for an event.
- Donate an item for our auctions.

Learn more at [doorcountylandtrust.org/volunteer](http://doorcountylandtrust.org/volunteer)

## Celebrating Open Spaces and Wild Places

### Discover Your Door County Land Trust

Join us for a hike or hands-on activity at a protected wild place and discover Door County lands anew. Staff, hike leaders, and guest experts lead explorations on a variety of themes, each with a balance of science, observations, and hands-on experiences. Details may be found on our website. Registration will begin May 29. Look for your booklet in the mail around mid-May.

- **Explore the Door - Guided hikes.**
- **Wild Adventures - Science discovery activities.**
- **Special Events - Unique events for a cause.**
- **Dining for Open Spaces - Fundraising events. To be announced! Look for your booklet in the mail mid-May.**

Date	Time	Day	2019 Highlight Events
4/20	1-3pm	Sa	Earth Week Geology Walk
4/27	7-8:30pm	Sa	Nature's Opera: Frog Chorus Hike
5/4	9-11:30am	Sa	Water Discovery Adventure *
5/11	9-11am	Sa	Spring Flowers at Gilson-Peterson
5/16-19	All Day	Th-Sa	Washington Island Bird Festival
5/18	9-11am	Sa	Birding at Ship Canal
6/8	9-11am	Sa	Vernal Pond Aquatic Inventory *
6/15	9-11am	Sa	Niagara Escarpment Geology Hike
6/21	All Day	Fr	BioBlitz at Three Springs *
7/26	All Day	Fr	Washington Island Land Tour
8/17-18	All Day	Sa-Su	Annual Gathering Weekend Tours
8/18	3-6pm	Su	Annual Gathering Event/Presentation
9/20	9-11am	Fr	The Fungus Among Us Hike
9/28	8:30-10:30p	Sa	Deep Sky Astronomy
10/4	5:30-7pm	Fr	Sandhill Crane Migration
10/12	1-3pm	Sa	Strawberry Creek Hatchery Tour
12/14	1-3pm	Sa	Gibraltar-Ephraim Swamp Stomp

\* Participants will help collect data using biotic indexes.





# PROTECTING LAND AND WATER, PLANTS AND ANIMALS

## ***Protected Forests of Chambers Island Nature Preserve***

Seven miles of water separate Chambers Island from the Door Peninsula. During the 1920s, real estate developers planned a golf resort with hundreds of cottages. After the stock market crash of 1929, the plan was abandoned, leaving the island wild and natural. The connected forest, the leather-leaf-muskeg, inland lake, and other features make it a high quality nesting and stop-over site for more than 172 documented bird species. Door County Land Trust is protecting these forests as part of the growing Chambers Island Nature Preserve.

Photo by Dan Eggert

## **How We Work**

Door County Land Trust's conservation success to date is nothing short of remarkable. More than 8,000 acres... protected. Habitat for countless plant and animal species. Wetlands, streams and groundwater. Iconic scenic views. Undeveloped open space. Contiguous forests. And, the sometimes overlooked reasons for land protection—family legacy, a landowner's vision for the land, a love of place.

To achieve lasting conservation results, the Land Trust relies on several land protection methods: land purchases, land donations, or conservation easement agreements with private landowners.

Together, these methods allow for the Door County Land Trust to build connected—protected—landscapes. A love of place may lead landowners to donate their land for protection, leaving a legacy for future generations to enjoy. A conservation easement may be the perfect way to permanently protect a landowner's vision and family legacy. Door County Land Trust may purchase land at appraised value, or in a bargain sale, to expand a nature preserve.

## **Laying the Foundation for Land Protection**

As an accredited land trust, Door County Land Trust follows best practices to ensure permanent protection. The process includes evaluating the conservation purposes of the land, recommending lands for protection by the Land Trust's Land Policy Committee, and a review and final approval by the Board of Directors. Considerations for securing grant funding, raising donations from members, and planning for the long-term care of the property help shape the process.

Launching a land protection project takes time, usually more than a year and often several years from beginning to end. Securing funding is a major factor that influences the project timeline—especially when factoring in deadlines and timetables for state and federal grant sources. A “typical” grant application may take over two months to prepare, and another six to nine months for notice of approval, rejection, or partial funding.

What's the good news in all this? Door County Land Trust has a long history of working on important land protection projects that align with the priorities of grant funders and has a proven track record of successfully completing these projects, one at a time, toward a larger vision of interconnected natural areas.

Several years ago, the Land Trust began laying the groundwork for new land acquisitions at Chambers Island, Gibraltar-Ephraim Swamp Natural Area and Washington Island's Big and Little Marsh State Natural Area. If all goes as planned, we look forward to being able to announce new acquisitions in the coming years.



## Land Donated to Chambers Island Nature Preserve

Chambers Island is recognized by Door County conservation partners as a high priority wildlife habitat primarily because of the number of species of birds which migrate and nest on the island, forests, and wetlands. The Chambers Island Nature Preserve has expanded, thanks to generous land donations. A partial donation/bargain sale from Moss and Sharon Busch helped establish the preserve. In December 2018, Pete and Fawn Rogers, long-time summer residents on the island, made a wonderful gift of land at the Chambers Island Nature Preserve. Their 9-acre wooded parcel connects other protected lands within the contiguous interior forest on the island.

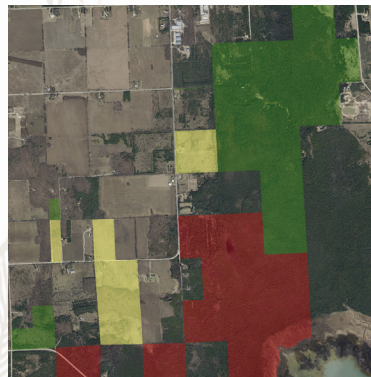
The Rogers and Busch families were among the islanders who began discussions about protecting the island in 2013. “The Door County Land Trust is a great organization for preserving land in its natural state for everyone to enjoy,” says land donor Pete Rogers. “We’re happy to see wild lands protected from development.”

The Rogers and Busches have both helped to bring the nature preserve vision to reality. Pete and Moss both served on the Chambers Island Nature Preserve committee assisting with landowner outreach and Fawn served on the committee assisting with fundraising, events, and outreach activities. Door County Land Trust thanks the Busches and the Rogers for their gifts of land and their commitment to the nature preserve.

## Protecting Wildlife Corridors with Conservation Easements

Does the Door County Land Trust need to own all exceptional lands and waters in the county in order to protect them forever? No! The Land Trust can still conserve unique places without owning them. Conservation easements can protect the lands located between nature preserves. Partnering landowners can protect their property with a conservation easement, retaining their ownership of the property, and the Land Trust ensures the landowner’s conservation vision is upheld... forever.

Door County Land Trust protects 72 conservation easements, ranging in size from a few acres to hundreds of acres and totaling more than 3,300 acres. During 2018, Conservation Easement Program Manager Drew Reinke began the work for several new properties to be protected, which strengthens the ecological value of other conservation easements.



*Door County Land Trust nature preserves (green parcels on the map above), are enhanced by partnerships with conservation easement landowners (yellow parcels), and connect forest and wildlife corridors with lands protected by other conservation partners like The Nature Conservancy (red parcels).*

## Land Protection Efforts Gaining Momentum at Gibraltar-Ephraim Swamp Natural Area

The Door County Land Trust’s land protection efforts are gaining momentum at the Gibraltar-Ephraim Swamp Natural Area. During 2018 the Land Trust laid the groundwork to secure funding for future acquisitions. “Many people are surprised when we tell them an average land purchase takes longer than a year,” said Land Program Director Julie Schartner.

The Land Trust currently owns 132 acres and protects another 25 acres through a conservation easement agreement within the Gibraltar Ephraim Swamp State Natural Area, and 2018 efforts will be rewarded with 120 more acres set to purchase in spring 2019. The project area focuses on the headwater wetlands in order to protect the water quality of Hidden Springs and Ephraim Creek that flow into Green Bay.

The spring purchase of 120 acres is supported through funding from two grants—the Environmental Protection Agency’s Great Lakes Restoration Initiative and the State of Wisconsin Knowles-Nelson Stewardship Program.

“We’ve been working on these parcels since fall of 2017,” said Schartner. “Securing funding can be a process. Grant applications were submitted in late 2017, and the tentative funding awards were just announced recently. Now we’re finally preparing to close on the purchase. And in the meantime, we’ve identified other priority parcels in the neighborhood, and we’ve applied for grant funding for future purchases.”

With a growing preserve and additional land purchases on the horizon, Door County Land Trust will continue to raise funds to further land protection efforts and for the long-term care of the Gibraltar-Ephraim Swamp Natural Area.



## Bay Shore Blufflands Buckthorn Blast

Stretching above the shores of Green Bay between Egg Harbor and Sturgeon Bay, the Bay Shore Blufflands Nature Preserve is known for its scenic views and variety of habitats for plants and animals. Wind-swept fields, towering pine forests, ephemeral wetlands and springs, and exposed Niagara Escarpment all contribute to the beauty of this special place.



The Bay Shore Blufflands Buckthorn Blast is a community conservation project to control invasive shrubs with two priorities: first, to inform and inspire neighbors to remove or replace invasive plants on their land, and second, to control invasive plants and restore habitat at the preserve.



*Denise Hubbard (center) and Ken Hubbard (right) with Land Trust staff Cinnamon Rossman, Tom Clay, and Amanda Pyke.*

Ken and Denise Hubbard, longtime supporters of the Land Trust and members of the Bay Shore Property Owners Association (BSPOA) helped conceive the project and built support for the effort. Working in partnership with the Bay Shore Property Owner's Association and other neighbors, significant progress has been made to remove invasive shrubs including buckthorn, honeysuckle, autumn olive and others from the nature preserve. During the June 2018 kick-off event, Land Trust staff and Door County Invasive Species Team coordinator Kari Hagenow demonstrated plant identification and control techniques to participants who pledged to remove the invasives at their property.

Capitalizing on the progress made in previous years, the Land Trust partnered with BSPOA volunteers and professional contractors to improve 232 acres of plant and animal habitat. Annual support from the Bay Shore Property Owners Association, the Land Trust's Stewardship Endowment Fund, Door Stewardship Alliance, and other private donations have helped fund the first round of invasive species treatment. As the Buckthorn Blast continues, the Land Trust will encourage neighbors to support the effort by working on their private property, volunteering at the nature preserve, and contributing funds to support the effort.

With the support of BSPOA and conservation champions like neighbors Ken and Denise Hubbard, restoration of the greater neighborhood is possible.

## CARING FOR THE LAND

Photo by Julie Schaninger

### **Richter Community Forest Nature Preserve**

Arni Richter, a visionary landowner on Washington Island, donated the largest, undeveloped parcel of land on Washington Island to the Door County Land Trust, thereby gifting the land to the communities of Washington Island and Door County.



## Forest for the People

The largest parcel of undeveloped land on Washington Island, the Richter Community Forest Nature Preserve, features a diverse mix of northern hardwoods, numerous tip-up mounds (uprooted trees), bedrock ridges, and an abundance of spring wildflowers. In 2001, Arni Richter donated the 160-acre forest so the community could enjoy the trails and use the forest as an outdoor classroom. To honor Arni Richter's vision for the forest, the Land Trust continues occasional timber harvests to promote species diversity.

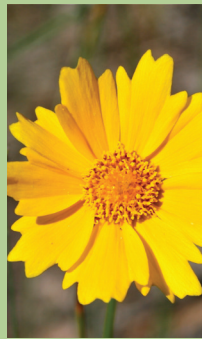
Before timber harvests occurred, Land Trust staff and volunteers worked to remove an incredibly tough invasive plant—garlic mustard. Easily spread and difficult to remove, garlic mustard seeds would contaminate the equipment and spread quickly to new areas if not treated first, out-competing the native plants for necessary resources. The first step for a successful winter timber harvest is to stop the spread of garlic mustard and prepare the preserve for forest activity.

In 2018 Land Trust staff and volunteers gathered to tackle this tough invasive, working in the field all day. Volunteers hand-pulled twenty-one bags of garlic mustard from the forest, readying the preserve for future forest management activities. Ultimately, stopping the spread of invasive garlic mustard and opening the forest floor will allow for new native seeds to sprout and saplings to grow. Arni's original vision—a forest for the community to experience and learn from—lives on at the Richter Community Forest Nature Preserve.

Stewardship volunteers removed nearly half a ton of garlic mustard from the forest understory, helping to stop the spread of the invasive plant. From left, Land Protection and Stewardship Specialist Jesse Koyen, Judy Samida, Bonnie Burnham, Bobbie Doerr, and Mike Berger.



Photo by Amanda Dyke



Photos by Carl Cochran

## Winning the Battle on Multiple Fronts

In 2015 the Door County Land Trust began an intensive, large-scale effort to remove invasive species from 399 acres at the Sturgeon Bay Ship Canal Nature Preserve. Monumental in its acreage, four-year time span, and financial commitment, the completion of this project in 2018 signifies a victory in habitat restoration at the nature preserve and a major milestone in Door County Land Trust history. It is the largest restoration project completed by the Land Trust to date.

Ship Canal Nature Preserve is bounded on the east side by nearly a thousand feet of sandy Lake Michigan shoreline. The preserve contains Strawberry Creek, the largest and most important Chinook salmon egg collection and fingerling stocking site in Wisconsin. A ridge swale complex, sand dunes, and wetlands can all be found within the preserve. The variety of landscape features hosts an array of threatened plant and animal species. One of the largest populations of federally-listed threatened Pitcher's dune thistle thrives at the preserve along with the federally-listed threatened dwarf lake iris, state-listed threatened dune goldenrod, and state-listed special concern Mingan's moonwort fern. Unfortunately, invasive plants were often out-competing native plants. With woody shrubs such as honeysuckle and buckthorn invading forests, spotted knapweed on the dunes, and invasive plants like reed canary grass, purple loosestrife, and *Phragmites* creeping into the wetlands, the Land Trust launched a battle on multiple fronts.

Since beginning the restoration efforts, native plants like the threatened Pitcher's dune thistle are now flourishing. Other native plants, like Canada blue grass, Canada yew, and spring ephemeral wildflowers such as trillium and *Hepatica*, are beginning to grow. This will help to reestablish a healthy and diverse ecosystem over time.

Funding for the initial 3-year phase of the project was provided by a North American Wetland Conservation Act (NAWCA) grant and an additional year was funded through the US Fish and Wildlife Service Partner Program Grant. As the preserve enters a phase of diligent monitoring and regular follow-up to maintain the work completed, the Land Trust will rely on volunteers to help at the preserve, as well as members and donors to fund the ongoing restoration.



## For the Birds! Hike Leaders and Preserve Stewards Train Together for Bird Count

Nearly 50 hike leaders and preserve stewards gathered in May 2018 at the Björklunden campus in Baileys Harbor to learn from staff and peers about nature preserves, trails, and upcoming hikes. But, the main agenda was training to participate in ongoing bird monitoring projects taking place at several nature preserves. Bird point counts and bird breeding information has been collected at multiple Door County Land Trust nature preserves over the past several years, and collecting data at the same points is critical for comparison in future years. Naturalist Paul Regnier took the group out to three different habitat areas to teach bird count methods. Volunteers from the group participated in gathering data at the Kellner Fen Natural Area, Sturgeon Bay Ship Canal Nature Preserve, and Three Springs Nature Preserve. The information will be included in Wisconsin's Breeding Bird Atlas II, which is a four year study to be completed at the end of 2019. Bird populations respond quickly to positive changes in their habitat areas, and data may show the positive impacts of restoration and stewardship efforts. Thanks to help from hike leaders and preserve stewards, Door County Land Trust is able to track the success of habitat improvement for migratory and nesting birds.

## ‘Year of the Bird’ at the 2018 Annual Gathering

Members and friends gathered at the Stone Harbor Resort in Sturgeon Bay to celebrate the ‘Year of the Bird’ with guest speakers Craig Thompson from the Wisconsin Department of Natural Resources and researchers Patti Vitt and Kayri Havens from the Chicago Botanic Garden. Our guest speakers shared stories putting our local conservation work in a global context. Thompson’s presentation, entitled “SOS—Saving Our Songbirds,” showed how Door County’s protected lands are key to the success of hundreds of species of birds. According to Thompson, Door County’s location along the Great Lakes migratory bird flyway makes this an ideal rest stop for birds on their 2,000 mile journey—but only if we continue to protect and restore natural habitats.

Five ways that you can help

‘Save Our Songbirds’:

1. Drink bird-friendly coffee
2. Make your yard an oasis for birds
3. Plant native species
4. Keep cats indoors
5. Mark your windows with a bird-saver material

Video highlights of the event may be found at [DoorCountyLandTrust.org/Gathering18](http://DoorCountyLandTrust.org/Gathering18)

**Save the date!** The 2019 Annual Gathering Weekend **Land tours** (Sat. August 17 and Sun. August 18) at privately protected conservation easement properties. **Annual Gathering** (Sun. August 18) with guest speakers.

### ***Bird-Friendly Coffee for Sale***

Buy your **Smithsonian-Certified Bird-Friendly Coffee** at the Door County Land Trust’s Sturgeon Bay office. This coffee is not just shade-grown—it’s grown in the rainforest, among the native vegetation, leaving rainforest ecosystems intact for birds. It’s organic... and delicious! Available in French Roast, Morning Blend, Dark Guatemalan, or Decaf for \$10 per 10 oz. package. Drop by the office Monday through Friday, 9-5, or call us at (920)746-1359.

## STRONGER TOGETHER

### ***Citizen Science at Every Age***

Gibraltar Fourth Graders made two impressive discoveries during their Spring 2018 field trip to the conservation easement protected property of Nancy Aten and Dan Collins. The central newt was a new discovery for the neighborhood. And, they also found freshwater sponges—never before documented in Door County!

Photo by Grace Rossman





## Girls Scout Day at the Kangaroo Lake Nature Preserve

What is a cuesta? Ask Girl Scout Troop #4356! Girl Scout leaders from several troops led a May 2018 day of activities at Girl Scout's Camp Cuesta, adjacent to the Kangaroo Lake Nature Preserve. About 60 girls ages 5-14, representing all five Door County public schools, spent the day helping with camp clean-up, nature-based art activities, and wildflower hikes on Door County Land Trust's adjoining property, Kangaroo Lake Nature Preserve. Land Trust hike leader Sarah Freyman and fellow volunteer Grace Rossman led the hikes. Each girl received a Land Trust activity kit and nature journal, colored pencils, and newfound knowledge of the native wildflowers in bloom at the preserve. And, what is a cuesta, anyway? The cuesta is the sloping bedrock and exposed escarpment cliff that's visible from the hiking trails on the preserve.

Spending time outside benefits the mind, body and spirit—especially for youth. Overwhelmingly, studies show that kids are spending more time in front of a screen, missing out on benefits like increased fitness, improved vision, lowered stress levels, improved critical thinking skills, and developing a sense of place—a love of Door County! These girls will be the next generation to help protect and care for these exceptional lands and waters.

## Meet the Staff...Call? Coffee? Or, Hike!

With more than 2,200 member households, meeting members face-to-face may be a lofty goal, but that's just what Executive Director Tom Clay and Development Director Cinnamon Rossman set out to do. During 2018, we offered to meet loyal annual supporters for coffee or a hike to get to know better their vision for the Door County Land Trust. In the process, we had some great laughs and some wonderful encounters with wildlife. An eagle took flight just as our group came around the bend—right on cue. Conversations like these inform our strategic planning, underway now. We invite you to join us this year to share your dreams for Door County. Call us to set a date on the calendar. We'll book the eagles in advance.

## Protect What You Love Welcome! Thank you, New Members

Last fall we invited the community to "Help Protect What You Love" by making a donation to join the Door County Land Trust. More than 185 new members joined the Door County Land Trust in 2018—and we thank you! The mission to protect our incredible peninsula and islands is stronger, thanks to you.

The 'Protect What You Love' campaign kicked off with great success on #GivingTuesday with fundraisers on the Land Trust's Facebook page and website. #GivingTuesday is a national day of charity that aims to promote charitable giving on the Tuesday that follows Thanksgiving—and some of the biggest shopping days of the year.

The campaign was such a success, we're going to do it again. Mark your calendars! #GivingTuesday is December 3, 2019.

## Double Your Donation

Matching donors helped double donations last fall. Look for your invitation to make a challenge gift to the campaign this spring. With your help, we'll inspire new members to join and double their donation!





# 2018 Financial Report

As a 501(c)(3) organization, the Door County Land Trust depends on the generosity and contributions from members and supporters to finance our conservation work. 2018 audited financial statements and our Federal Form 990 are available by request.

## Net assets as of December 31, 2018

Funds restricted or designated for future land acquisition <sup>1</sup>	\$	303,202
Funds restricted or designated for legal defense <sup>2</sup>	\$	215,781
Land stewardship endowment fund <sup>3</sup>	\$	2,814,353
Cash restricted for current land acquisition projects	\$	848,831
Working capital and operating reserve	\$	741,225
Investment in property and equipment	\$	201,459
Net assets excluding land	\$	5,124,851
Land held for conservation	\$	25,890,210
<b>TOTAL NET ASSETS</b>	<b>\$</b>	<b>\$31,015,061</b>
Change in net assets versus 2017	\$	366,799

<sup>1</sup>The Land Acquisition Fund is set aside for use in covering costs associated with land purchases.

<sup>2</sup>The Legal Defense Fund is a segregated fund for use in defending and enforcing Land Trust conservation easement agreements and in resolving encroachments or vandalism issues that may arise on Door County Land Trust owned properties.

<sup>3</sup>The Stewardship Endowment Trust is a segregated fund designed to provide a long-term stream of income through use of accrued interest for monitoring, stewarding, and restoring Door County Land Trust protected properties.

## Stewardship Endowment Trust

The Endowment is managed by Nicolet National Bank and is governed by the following Board of Trustees:

Peter Deschler	Jim Lester	Al Radtke	Roy Thilly
Tony Fiorato	Bob Ling	Bill Schaars	

If you are interested in making a tax-deductible donation to the Endowment, please contact Cinnamon Rossman at the Land Trust office, (920) 746-1359.



Spring Bloom at Three Springs Nature Preserve  
Photo by Colleen McCarty

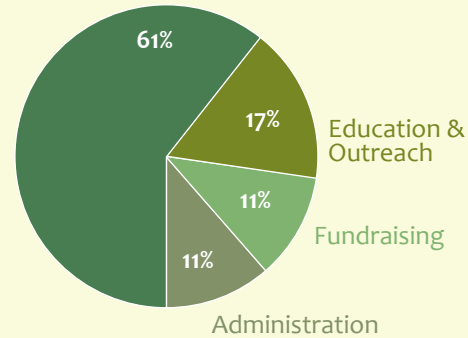




## 2018 Annual Operating Revenue and Expenses

### USES OF FUNDS

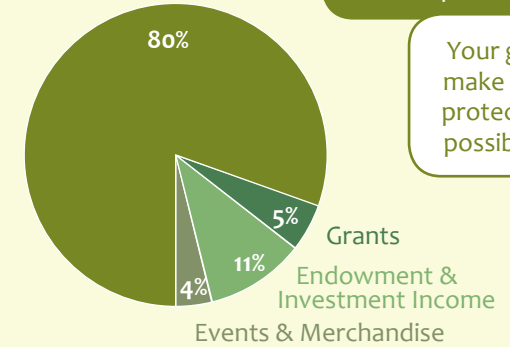
Land Stewardship & Protection Costs



The Door County Land Trust spent \$996,547 on the activities described above.

### SOURCES OF FUNDS

Donor & Member Contributions



The Door County Land Trust raised \$1,115,101 from the sources described above.

Did you know that donor and member contributions were so important?

Your gifts make land protection possible!!!

Door County Land Trust's annual operating budget includes the programs, supplies, and administrative costs to carry out the mission to protect and care for our protected lands. From funding simple things like light bulbs to carrying out landscape-wide land restoration, the largest portion of our annual revenue comes from donor and member contributions. More than 2,200 member households contributed to the mission to protect and care for Door County's exceptional lands and waters in 2018. **Thank you!**

Door County Land Trust maintains an operating reserve fund designed to sustain core operations and uphold our commitment to land protection for perpetuity. \$118,554 was invested in the operating reserve fund to cover potential future conservation obligations.

## 2018 Land Acquisitions *(Purchases, Bargain Sales, and Donations)*

### SOURCES OF FUNDS FOR LAND ACQUISITIONS COMPLETED IN 2018

**In 2018, \$333,000 was expended to acquire 5 properties, totaling 96.43 acres!**



As you might imagine, land conservation can be a very expensive endeavor. Three separate sources help the Door County Land Trust establish new nature preserves or expand existing preserves. The largest source of funds for the Door County Land Trust's acquisitions are obtained through grants that we applied for and secured from state, federal, and other agencies. In addition to grants, we use contributions from our supporters to help pay for land acquisition costs. This year we received one land donation from generous property owners. Donations of property may be used as a match for leveraging grant funds.



# BEQUESTS, MEMORIALS AND TRIBUTES

Gifts received between January 1 and December 31, 2018

## BEQUESTS

Carpenter, Joe

## TRIBUTES

**In Honor Of A Great Nature Walk!**

Martin, Gary

**In Honor of Maureen Riopelle and Robin Baliszewski**

Wilson, Sara

**In Honor of Jean Barrett**

Wolff, Bill and Kathy

**In Honor of Dick and Joan Baudhuin**

Saunders, Jeremy and Melissa

**In Honor of Kurt and Heidi Becker's 25th Wedding Anniversary**

Deschler, Peter and Gina

**In Honor of Jo Beno**

Scattergood, Kirk and Donna

**In Honor of Jeff and Ann Berner**

Classen, Peter and Barbara

**In Honor of Spencer and Martha Bonnie**

Bonnie, Kristin

**In Honor of Tisha Brown**

Hope Church

**In Honor of Jim and Barbara Bunning**

Sunshine Charitable Foundation

**In Honor of Dave and Vonnie Callsen's 60th Wedding Anniversary**

Coleman, Beth and Wessel, Curt

**In Honor of Deb Pace and Mark Carley, CA**

Wilson, Todd and Joan

**In Honor of The Cushman Family**

Cushman, Betsy and Preston, Barb

**In Honor of Charlie and Sarah DeNamur**

Franklin, Larry and Cissie

**In Honor of Gina Deschler's Birthday**

Demaster, Larry and Sandy

**In Honor of Peter Deschler's Birthday**

Margolies, Jonathan and Marjorie

**In Honor of Robert and Liesbeth Fickes**

Fickes, Christopher

**In Honor of Martin and Hilary Ford**

Ford, Chris, Ali, Will and Nick

**In Honor of Rick and Barb Frank**

Brevard, Mary

**In Honor of Jack and Marcy Fry**

Mielke, Tom and Vicki

**In Honor of Van and Hildy Gathany**

Andrews, Kristen

**In Honor of Michele Stenger and Mike Gracz**

Dobyns, Alicia Stenger

**In Honor of Scott Hansen**

Hope Church

**In Honor of Mick and Lisa Hatch**

Hatch, Gillian

**In Honor of Rick Hecker's 75th Birthday**

Frey, Fred and Barb

**In Honor of Tom Hendrix**

Hendrix, Lisa

**In Honor of Giz and Linda Herbst**

Herbst, Alicia

**In Honor of Brad and Karol Hitt**

Malmquist, Susan

**In Honor of Rich and Rose Hubbard**

Vandenberg, Kathryn

**In Honor of Lloyd and Inge Keith**

Keith, Annie and Hurst, Mark

**In Honor of Margaret Ketterer**

Ketterer, David

**In Honor of Don and Brigid Krutek**

Krutek, Paul and Fran

**In Honor of Jack Martin**

Needelman, Jerry and Margie

**In Honor of Patricia McCoy**

Cook, Jean

**In Honor of Dave and Colette McDonough**

McDonough, Emilie

**In Honor of Rob and Sherry Moore**

Moore, Jeff and Julie

**In Honor of The Morris Families**

Fields, Chuck and Carolyn

**In Honor of Robert and Julie Mueller**

Urbrock, Bill and Barbara

**In Honor of the Marriage of Jean Barrett and Paul Neuman**

Bramsen, John and Norma

**In Honor of the Marriage of Pam Davis and Lou Osadjan**

Jordan, Raeona

**In Honor of Jeff and Barb Ottum**

Ottum, Brad

**In Honor of Jeff Ottum's Presentation to PEO Chapter AI**

PEO Chapter AI

**In Honor of Kristin Pagano**

Salesforceorg

**In Honor of Johanna Parkes**

Gracz, Jeff  
Stenger Dobyns, Alicia

**In Honor of Nature Lovers Marie**

Anderson and Margie Paul

Crass, Sue

**In Honor of Sandra Place**

Harrer, Bernie and Schab, Lisa

**In Honor of Bill and Carol Roche's 50th**

**Wedding Anniversary**

Callen, Chris and Katie

**In Honor of Ali Scheig's Birthday**

Scheig, Mary

Scheig, Katie

**In Honor of Ali Scheig's Graduation**

Scheig, Mary

Scheig, Katie

**In Honor of Gretchen Schmelzer**

Skahen, Dennis and Marguerite

**In Honor of Robert Schoof's 91st**

**Birthday**

Schoof, Tamara Su

**In Honor of The Schuelke Family**

Schuelke, Lindsay

**In Honor of Ruby Shemanske**

Worrell, Jenny and Wicklund, Joel

**In Honor of Nathan Slovin**

Prager, Karen and Eric

**In Honor of Mark Sprague**

Ketterer, Margaret and Robert

**In Honor of Marvin and Sherry Strawn**

Luginbill, Kristin

**In Honor of Virge Temme**

Hope Church

**In Honor of Dr William Urbrock**

Hope Church

**In Honor of Lynn Utesch**

Hope Church

**In Honor of Jerry Winzenz**

Hagemeister, Annelies

Noffke, Janice

**In Honor of Jane McKie and Dave Zuhlke**

McKie, Eldon and Kathryn

## MEMORIALS

**In Memory of Bruce Ambuel**

Davis, Nancy

**In Memory of Betty Ames**

Abendroth, Robert and Roberta

Agnor, Millicent

Anderson, Constance Trenholm

Anonymous

Anonymous

Barr, Bruce and Maggie

Birger, Jim and Susan

Callsen, Dave and Vonnie

Community Church Of Fish Creek

Damon, Priscilla

Davies, Colleen

Flint, Pete

Gibson, Phyllis B

Howard, Don and Virginia

Laudon, Mary

Mohr, Mark and Jane

Oates, Dick and Carolyn

Panning, Florence

Parshalle, Donna

Prekosovich, Stephen and Megan

Schmidt, Michael and Diane

Slugg, Elizabeth

Stanley, Mary

Stephens, Carolyn

Thompson, Way and Jacquelyn

Trenholm, Marcy

Wernecke, Bill and Sue

Widman, Ruth

Wilcox, Thomas and Nancy

**In Memory of Frank Baker**

Fontaine, Mary M

**In Memory of Bill Benson**

Luvisi, George

**In Memory of Sandy Betts**

Marsh, Dawn

**In Memory of Terry Bolland**

McGaw, Jessica

**In Memory of Cal Bonnivier**

Birger, Jim and Susan

Campbell, Kathy and John

Glessner, Kay

Hammerberg, Wally and Norma

Hartmann, Bob and Bonnie

Madden, Michael and Barbara

Scholz, Carl and Ruth

Smith, Jim and Kay

Stone, Tim and Sue

**In Memory of Darwin Bork**

Bork, Jerry and Julie

Galloway, Deane and Joan

Krautkramer, Jim and Cindi

Schaefer, Gary and Janie

Schenck SC

Schiro-Digney, Debra

Sweet, Carol

Sweet, Cindy

Sweet, Tim and Cindi

Weber, Eugene

Weber, Lois

White, Richard

**In Memory of John Brogan**

Bednarowski, Keith and Mary

Brogan, Bob

Bungener, K Christian

Cristall, Peter and Myra

Dorsch, Aliece

Fischer, Gail

Frazier, Jay and Alison

Gissell, George

Glessner, Kay

Henger, Gary and Jo Ann

Horseshoe Bay Golf Club

Kasriel, Paul and Katy

Kress, James

Lulloff, Sarah

Lutsey Family Foundation, Inc

Ottum, Jeff and Barb

Quinlan, Anna

Schmitz, William and Adrienne

Schober, Thomas

Stone, Brett and Amy

Wagner, Terry

Zachariasen, Christina

**In Memory of Lyle Brundige**

Matthies, Suzanne D

**In Memory of Gary Buerstatte**

The Braga Family

Canter, Sharon and Richard

Constable, Thomas and Doreen

Gale, Kathleen

Governors Woods Property Owners Assoc

Hunt, Mary

Koenig, Al and Sherry

Kowalski, Mary and Jamie

Lange, Jeff and Brenda

McLeRoy, Laurie

Minteer, Stephanie and Jack

Rosenbeger, Herbert and Sandra

Thompson, Mark and Barbara

**In Memory of Richard and Dorothy Burkhardt**

Burkhardt, Jon and Karen

**In Memory of Joe Carpenter**

Mahoney, Mike and Liz

**In Memory of John Cebuhar**

O'Meara, Megan



**In Memory of Barbara Craig**  
Brevard, Mary

**In Memory of Bob Davis**  
Kubicz, Agnes  
Lukes, Charlotte

**In Memory of Joan Deardorff**  
Anonymous  
Beimborn, Janet  
Brophy, Michael and Debra  
Caelewarts, Carol  
Johnson, Raymond and Mary  
McVey, Ed  
Oleary, Nancy and Lindberg, Lois  
Schneider, Erik  
Schneider, Mike and Cindy  
Swearingen, Susan

**In Memory of David Townley Debenham**  
Debenham, Barb

**In Memory of Harold Deutsch**  
Deutsch, Regine  
Friedl, Mike and Carolyn

**In Memory of Amanda DeWitt**  
Franze, Eric, Bob, and Nanette

**In Memory of Robert and Jean Diehl**  
Diehl, Scott and Cheryl

**In Memory of Bob Franden**  
Martinez, Kathy  
Wolf-Franden, Cynthia

**In Memory of Prof Edwin R Fitzgerald**  
Mueller, Peter

**In Memory of Ralph Herlache**  
Herlache, Peggy

**In Memory of Russ Heyer**  
Abbott, Edward and McFadden, Susan  
Augustine, Kay  
Babula, Eric and Deborah  
Balestrieri, Cynthia  
Boyle, Joseph and Ann  
Dubord, John and Plunkett, Annette  
Fieber, Paul and Susan  
Goeldner, Alice  
Heyer, Kay  
Kirchman, Genevieve  
Koneazny, Kathleen  
McClutchy, Jim and Judy  
Mersberger, Peter and Marilyn  
Mersberger, Jacob and Jeanne  
Murtaugh, John and Lucia  
Ost, Mitchell and Sonia  
Rebro, Lawrence and Jane  
Reeves, Theresa  
Schneider, Karen  
Thorson, Shawn and Kelly  
Trokan, Michael and Tenorio, Rita  
Tweed, Terry and Susan  
Spaeth Werner, Liz

**In Memory of Thomas Daniel Hodge, Sr**  
Urbrock, Bill and Barbara

**In Memory of Jon Hollingshead**  
Andrae, Dan and Marjorie  
Arendt, Stephen and Janet  
Birger, Jim and Susan  
Bunning, Jim and Barbara  
Congdon, Mary  
DeNardo, Tony and Donna  
Dull, Charles and Joanne  
Elliott, Rob and Colleen  
Finger, Jack and Diane  
Hansen, James and Barbara  
Henrichs, Mel and Ruth  
Hermann, John and Dolores  
Hollingshead, Judy  
Johnson, Darrell and Dianne  
Johnson, John  
Johnson, William and Kristine  
Klimaitis, Ron and Dougherty, Gloria  
Korte, Joe  
Krapf, Wiley and Roselyn  
Kufrin, Bob and Lainie  
Lhost, Lee and Jill  
Lisle, Tom and Bev  
Lokken, Ron and Judy  
Lukes, Charlotte

Maloney, Ron and Pam  
Maples, Larry and Nancy  
Moellenberndt, Bob and Carol  
Moss, Glen and Mary Ann  
Moss, Susan and Himmelstein, Hal  
Mutchler, Keith and Sherry  
Neuman, Juliana  
Ottum, Jeff and Barb  
Ray, Diane and Ken  
Richards, Jim and Marianne  
Samuels, Lynne  
Scholz, Carl and Ruth  
Siebel, Barbara  
Slobe, Thomas  
Stone, Tim and Sue  
Swanson, John and Deanna  
Sweeney, Michael and Barbara  
Tuch, David and Barbara  
Wall, Cliff  
Wilkie, Joan  
Wilson, Tom and Barb  
Wolf, Duane and Bonnie  
Wolff, Bill and Kathy  
Youngsteadt, Duane and Leslie

**In Memory of Shirley Honold**  
Noland, Karin

**In Memory of Phyllis Ingwersen**  
Cady, Bonnie

**In Memory of Larry Kaufman**  
Bauer, Constance  
Butkovich, Susan  
Caldwell, Susan

**In Memory of Larry Kaufman**  
(Continued)  
Dahlin, Timothy  
Fagans, Douglas  
Flader, William and Joan  
Frohlichstein, David  
Frohlichstein, Harvey and Julie  
Gesmer, Jason and Louise  
Hatch, Leslie  
Hogan, Liza  
Johnson, Kathy  
K Source, Inc  
Kane, Barbara  
Kaufman, Sam and Liza  
Kennett, Kendra  
Levine, Bernard and Judith  
Levine, David and Kaufman, Laura  
Lorenz, William and Janice  
Mann, James E  
Mann, Thomas  
Pigati, Bill and Connie  
Pirri, Frank and Lucille  
Rapaport, Mike and Michelle  
Satin, Joanne  
Sheehan, Tom  
Weber, Ned and Susanne  
Wolfberg, Lynne

**In Memory of Carol Lentz**  
Benson, Nicholas

**In Memory of Suzanne A Lindsay**  
Lindsay, Bill

**In Memory of David Linsky**  
DeLisle, Becky

**In Memory of Christine Lokken Kelley**  
Davis, Nancy  
Davis, Rob  
Finger, Jack and Diane  
Greene, Tad and Debbie  
Swanson, John and Deanna  
Wilkinson, Karen

**In Memory of Paul Mahlberg**  
Faugust, Michael and Ikeda, Jennifer  
Hollingshead, Judy  
Rogers, Franklin and Elisabeth

**In Memory of Gretchen Maring**  
Turrieff, Tom and Jo Ann

**In Memory of John O'Gorman**  
Hess, Steve and Laurie

**In Memory of Emery Oleson**  
Asher, Barbara

**In Memory of Yvonne Bevry Olson**  
Alt, Claudia J  
Alt, George  
Caple, Louis  
Fine Line Designs Gallery  
Witt, Gene and Carmen

**In Memory of Mark Perry**  
Perry, Kerry

**In Memory of Colleen Person**  
Anderson, Neil and Patricia  
Bay Point Inn  
Bismark, Michael and Mary  
Bonde, Robert and Catherine  
Calewarts, Kenneth and Jeanne  
Creative Health Care Management  
Gesme, John  
Hagemann, George and Barbara  
Havill, Joshua and Sharpe-Havill, Alison  
Hokanson, Richard  
Hormann, Penny  
Kueppers, Mark  
Paffenroth, Steven and Deb  
Riester, Paul and Anna  
Robertson, Pat and Jerry  
Sharpe, Leslie and Marilyn  
Sprecher, Nancy  
Steinbach, Elaine T  
Victorsen, James and Rohanda

**In Memory of Floyd and Shirley Popour**  
Popour, Lyle and Nancy

**In Memory of Barry Quinnes**  
Witt, Gene and Carmen

**In Memory of Toska Quinnes**  
Alt, Claudia J  
Witt, Gene and Carmen

**In Memory of Andrew Rice**  
Allan, Mary and Terry

**In Memory of Dr William Rock**  
Forsberg, Bob  
Gorchynsky, George and Natalie  
Heidel and Family, Randy and Amy  
Larson, Jennifer  
Nelson, Rita  
Norsetter, John and Rhonda  
Rock, Maryellen  
Walsh, Michael B and Beth

**In Memory of Steve Schmelzer**  
Anonymous  
Heeringa, Don and Coggin  
Knutson, Jerrold and Melinda  
Quale, Ann  
Skahen, Dennis and Marguerite  
Skahen, Kara

**In Memory of James Schimp**  
Rose, Richard and Carolann

**In Memory of Chester Shevey**  
Frey, Fred and Barb

**In Memory of Mary Stevens**  
Stevens, Bill

**In Memory of David Speerschneider**  
Bonk, John and Eileen  
Gleason, Lloyd and Nancy  
Heiser, Ted and Ellen  
Kellstrom-Ray Agency, Inc  
Lawrence, Joan  
Mathews, Susan

**In Memory of David Speerschneider**  
(Continued)  
Richgels, Dale R and Janice R  
Speerschneider, Marilyn  
Wochos, Nick and Courtney

**In Loving Memory of Connie Squier**  
Squier, Susan and Roper, Gowen

**In Memory of John Squier**  
Brevard, Mary

**In Memory of Otto Thilenius**  
Thilenius, Elsbeth

**In Memory of Ralph Valatka**  
Perrine, Bess

**In Memory of Pauline Wesley Wanderer**  
Fischer, Gail

**In Memory of Penny Wawrzyniak**  
Asher, Barbara

**In Memory of Steve Wilkie**  
Askins, Caryl  
Bradley, Jim and Libby  
Bryntesen, Jordyce  
Debenham, Barb  
Dull, Charles and Joanne  
Elliott, Rob and Colleen  
Hallahan, Bill and Natalie  
Harding, Ruth and Jeff  
Heeringa, Don and Coggin  
Hollingshead, Judy  
Jarosh, Joe and Sue  
Klinefelter, Dorothy  
Kluessendorf, Jerry and Lucy  
Madden, Michael and Barbara  
Maloney, Edward and Elizabeth  
McAvoy, Bill and Kathy  
Milske, Jodi  
Murdoch, Joan  
Murphy, John and Dorothea  
Ottum, Jeff and Barb  
Parrish, Todd and Shelley  
Ritzma, Craig and Hahn, Jean  
Rosecky, Mary  
Schmidt, Betty Lou  
Travis, Jack and Morgan, Diane  
Utey, Bill and Phyllis  
Walston, Mike and Mary  
Watkins, Norman and Mabel  
Weiss, Mareda  
Werner, Jack and Hester  
Williams, Eleanor  
Youngsteadt, Duane and Leslie  
Zechel, Daniel

**In Memory of Jim Wilkinson**  
Lokken, Ron and Judy

**In Memory of Rita Wiltgen**  
Davis, Nancy



# Protect the lands you love... forever.

## Plan to pass on your legacy.

The future of the peninsula and islands we love may be uncertain, but you can depend on the Door County Land Trust to protect the exceptional lands and waters we all love.

With your help, we can make a lasting difference for Door County's open spaces and wild places. Together, we can pass on a legacy of protected lands.

Consider making a gift that can last forever. Designate the Door County Land Trust as the beneficiary of your life insurance or retirement plan, or include a bequest provision in your will or trust.

Planning your gift today can make a lasting difference in Door County tomorrow...and forever.

Give us a call to start the conversation. No matter the size of your gift, we can help you create your legacy. Call Development Director Cinnamon Rossman or Executive Director Tom Clay at (920) 746-1359.

*Door County Land Trust is accredited by the Land Trust Accreditation Commission. Their validation confirms Door County Land Trust operations meet the standards of sound finances, ethical conduct, responsible governance, and lasting stewardship.*

## LEGACY CIRCLE MEMBERS

*The Door County Land Trust thanks the following benefactors who have indicated that the Land Trust has been included in their estate plans.*



Photo by Henry Mun

*Have you included the Land Trust in your planned giving? If so, please inform of us of your intent so we may thank you and include you in our Legacy Circle listing.*

Photo by Tom Rossman





*Door County inspires a love of place, and many members have strong connections—generations long—and love Door County like home. It is a joy to hear the memories and the desire to preserve the natural places here. For me, Door County is home. And it is a soul-fulfilling pleasure to work with members and the community to help protect these places—to bring people's land ethic to life.*

*Last spring, I took the call from Alison Zehr. She'd been thinking about planning a gift through her will... Could we meet and tell her more about our work? I got to know Alison that morning, and her questions prompted a great conversation about the Land Trust's vision for the future. I invited Alison to tell her story, because she shared a Door County vision we can all agree on—love it like home.*

*-Cinnamon Rossman, Development Director*

## LOVE IT LIKE HOME

By Alison Zehr

Last year I finally wrote a will, which unexpectedly opened some surprising new doors. Like many, I'd been avoiding anything to do with a will for far too long. I didn't have much money to leave and who would I leave it to? I surmounted the first hurdle by ignoring it—you don't have to be a millionaire to make a difference.

The second hurdle was harder but I finally got to it by asking myself, "What do I care about?" Well, family, of course. So they are in my will. But also, the environment, the arts, the humanities, and civic dialogue. And then, to help narrow my thinking, I asked, "What about them do I want to preserve for the future?" The answer came quickly—access. And now came the fun part, choosing the organizations.

*The environment was my first decision.  
It had to be the Door County Land Trust.*

Like many families, mine has been spending summers in Door County for generations (in our case, four). We have walked its woods and meadows, swum and sailed its waters, golfed and biked, and marveled at its amazing canopy of stars.

*We have loved Door County like home and pined for it when we've been away.*

With such a long history in the county, we've also seen many changes and have been both excited and concerned about the amount of new development. That's why I was so pleased when I first began to see Door County Land Trust signs. My professional life has

been spent working in and for nonprofits and I was aware of the important work land trusts do. So, I called Door County Land Trust and asked to talk about their work and their plans for the future. Cinnamon Rossman (whom I liked immediately just because of her name) said, "Of course, come on over!"

I had very specific questions to ask based on my experience. Is the group healthy and organized for sustainability? What are their plans for the future? Cinnamon was ready with positive answers to each. But the kismet part of it—the new door that opened—was the immediate feeling that I would be a part of two big, exciting things. First, a well thought-out vision to save key lands so future generations can learn, marvel at, and generally enjoy the diversity and beauty of Door County's amazing and distinctive landscapes. And also, a community of flora- and fauna-loving people who are committed to preservation.

I am looking forward to gatherings of Land Trust supporters and tours of the lands. I've even gotten two more families involved and plan on getting more signed up. I feel good about myself and better about the future of the county, and proud to play even a small role in ensuring that what I have loved about this land will be available to others long after I'm gone.

*Tom and I invite you to give us a call to talk about the Door County vision and how you might make a difference in this place we all love like home. You may reach either of us, Cinnamon Rossman or Executive Director Tom Clay, at (920)746-1359. We'll put the coffee on.*



# 2018 FINANCIAL SUPPORTERS

Total contributions received during 2018

We thank the following donors who, in partnership with the Door County Land Trust, help protect the special places of Door County.

Welcome to our new supporters! Donor names listed in **bold type** made their first financial contribution to the Land Trust in 2018.

## \$10,000 AND ABOVE

Anonymous  
John C Bock Foundation  
Brevard, Mary  
Buege, David and Linda  
Callsen, Dave and Vonnie  
Carpenter, Joe  
Bernal T Chomeau Private Foundation  
Diekmann, Don and Marianne  
Fiedler, Jessie  
Frank, Rick and Barbara  
Friedl, Mike and Carolyn  
Geyer, Phyllis  
Holm, Barbara  
Kessler, Dennis and Barbara  
Knowles Nelson State Stewardship Fund  
Lester, Jim and Barbee  
Tom and Bev Lisle Fund  
Olson, Ted and Lady  
Steffen, Michael  
**Sunshine Charitable Foundation**  
Trainer, Robert and Mary  
David V Uihlein Sr Foundation  
Uihlein, Lynde B  
Uihlein, Margery  
Robert A Uihlein Foundation Inc  
Vanderson, William and Gehrke, Christina

## \$1,000-\$9,999

**Al Johnson's Swedish Restaurant**  
Alexander, Duncan and Keane, Kit  
Ambuel, Helen  
Ames, John  
Anderson, Ernest  
Anderson, Mary  
Anderson, Stefan and Joan  
Anonymous (6)  
Augustian, Chris and Billina  
Baer, Charles and Stephanie  
Barrett, Jean  
Batzi, George and Sandra

Bay Shore Property Owners Assoc  
Beadell, Priscilla and Anthony  
Becker, Bruce and Patty  
Becker, Carl and Susan  
Bednarowski, Keith and Mary  
Bell, Hugh and Joyce  
Bell, Steve and Susan  
Benson, Adam and Linnea  
Bero, Robert and Judy  
Black, Jim and Patricia  
Blackburn, Robert and Kay  
Blacksmith Inn  
Blahnik Investment Group  
Blahnik, Jon and Christianna  
Blanchard, Pam  
Blanton, James and Barbara  
Board, Rich and Barb  
The OC and Pat Boldt Family Fund Of  
The Community Foundation For The  
Fox Valley Region  
Bramsen, John and Norma  
Brezan, Barry  
Bunning, Jim and Barbara  
The Richard W and Dorothy J  
Burkhardt Charitable Fund  
Bykowski, John and Rose  
Cady, Bonnie  
Cady-Kruse, Nell and Kruse, Steven  
Callen, Chris and Katie  
Capp, Stephen and Carol  
Carl, Rudy and Patricia  
Ciezki, Nancy and Kostecke, Diane  
Classen, Peter and Barbara  
Collins, Dan and Aten, Nancy  
Conner, Dick and Kit  
Connolly, Bonnie and Dennis  
Conroy, Peter and Beverly Ann  
Conta, Dennis and Deborah  
Cook, Andrew and Karen  
Cramer, Ward and Judy  
D'Abbraccio, Deanna and Morgan,  
Barbara  
Dagon, Russell and Sandy  
Daniel, David and Janet  
Davis, Dwight and Linda

Davis, Nancy  
Davis, Rob  
DeNardo, Tony and Donna  
Deschler, Peter and Gina  
Deutsch, Regine  
DeWitt, David and Julie  
Doane, Alger and Blalock, Martha  
Donegan, Sharon  
EarthShare  
Eccles, Bob and Mary  
Finger, Jack and Diane  
Fitzgerald, Carolyn  
Fletcher, Grant and Keeter, Laura  
Fletcher, Robert and Suzanne  
Peter Foote and Robin Wilson  
Charitable Foundation Of The Cedar  
Street Charitable Foundation  
Ford, Diane and Patrick  
Franklin, Larry and Cissie  
Fuhrmann Clark, Kristin and Clark,  
Stephen  
Gould, Barbara and Spencer  
Grelck, Dick and Carol  
Guenther, William A  
Haggerty, Mike and Jeanie  
Hake, Donna and Bruce  
The Mark and Anne Hansen  
Foundation  
**Hansen, Melissa**  
Harlan, Bob and Madeline  
Heim, Paul J and Watkins, Julie  
Hermann, John and Dolores  
Hislop Family Foundation  
Hitt, Brad and Karol  
Hoehn, James L Hoehn and Nancy  
Goldberg  
Hollingshead, Judy  
Ingwersen, Jim  
Jacobson, Rod and Jean  
Karges, Steven, Lynn and Kimberly  
Keller, Chuck and Carol  
Keller, Paula and Bob  
Kimbell, Alan and Anne  
Kimmel, Donald and Joan  
Klein, Michael and Maureen

Klug, Karl and Lucy  
Knight, Sue  
Kuester, Dennis and Sandy  
Kurtz, Jim and Becki  
Lanser, Brian and Sue  
Lewis, Elmer and Ann  
Licata, Anthony and Judith  
Lindsay, Bill  
Lindstrand, Keith and Katherine  
Ling, Bob and Heidi  
Luke, Jacquie and Rice, Ken  
Lukes, Charlotte  
Main Street Market  
Margolies, Jonathan and Marjorie  
Marshall, Elaine  
McCarty, Neil J and Patricia  
McCoy, Mike and Marge  
McDonald, Kevin and Wanda  
McGinnis, John and Lana  
McLeish, Ken and Chris  
Mead, Chuck  
Meissner, Genie and David  
Miller, Ed and Sandy  
MMG Foundation Inc  
Moline, Ronald and Barbara  
Moore, Tom and Kathie  
Myerson, Robert and Carla  
Nell, Patricia MD  
Nooyen, Steve and Kristi  
Northrop, Steve and Kaaren  
Olson, Carol and Bruce  
Olson, David and Fritsche, Claire  
Orner, William  
Ottum, Jeff and Barb  
Parkes, Johanna  
Parsons, Bill and Betty  
Perry, Kerry  
Peterson, Scott and Desenis, Judy

Prusik, Dennis and Maietta, Maryellen  
Przybylo, Jay  
Raibrook Foundation  
Reynolds, Jean  
Riopelle, Maureen and Baliszewski,  
Robin  
Roenigk, Randy and Julie  
Roppuld, Paul and Marianne  
Ross, Mason and Julie  
**Russell, Deb**  
Rutabaga Paddlesports LLC  
Sankey, Peggy  
Schmelzer, Gretchen  
Schmitz, Michael and Jeanne  
Schultz, David and Kristine  
Sedar, Jo  
Sensenbrenner, James B and Carol L  
Siebel, Barbara  
Skinner Family Fund  
Skrivanie, Oliver and Lynn  
Spitzley, John and Judy  
Squier, Robin  
Stanley, Emmy and Steve  
Stone, Tim and Sue  
Swanson, John and Deanna  
Taylor, Gene and JoAnne  
Telfer, Lee and Ruth  
Tencate, Chuck and Lana  
Thilenius, Elsbeth  
Thilly, Roy and Mary  
Thompson, Doris L  
Trainer, Charles and Booth, Anne  
Trainer, Robert and Carrie  
Turner, John and Judy  
Uttley, Bill and Phyllis  
Vanden Houten, Dale and Scott,  
Richard  
Vichick, Greg and Wendy

Von Briesen, Ted and Peggy  
Wake, Brian and Joan  
Waldburg-Wolfegg, Andreas  
Walker, Bill and Sunshine  
Warner, David and Rose  
Waseda Farms  
Watson, Rob and Picken, Judy  
Wenberg, David and Brenda  
White Gull Inn  
Williams, Jeffrey and Susan  
Wilson, John, Jr  
Wilson, Karen  
Wiltse, Curtis and Roxanne  
Wisconsin Land Fund of the Greater  
Green Bay Community Foundation  
Witt, Gene and Carmen  
Wolff, Bill and Kathy  
Yancey, John and Karen  
Yeomans Cottages LLC  
Youell, Sylvia  
Zimmer, Fred and Diane

## \$500-\$999

Acker, Fred and Cindy  
Anderson, Bob and Dorothy  
Anderson, Henry  
Anonymous (2)  
Benson, Don  
Bonovich, Sarah and Brian  
Bowman, John and Kay  
Brogan, Bob  
Brorson, Jon and Linda  
Brown, Karen and Kingsley  
Budzak, Lynn  
Burke, Dan, Heidi, Makenzie and Nathan  
CaJacob, Claire and DuMont, Debra  
Chapman, Donald and Debra

We thank the following partner organizations and agencies for their support of our current land acquisition and stewardship projects:



Great Lakes  
RESTORATION



The Nature  
Conservancy  
Protecting nature. Preserving life.



Fox River and Green Bay Natural Resource Trustee Council  
Environmental Protection Agency, Great Lakes Restoration Initiative Funds  
The Nature Conservancy  
U.S. Fish & Wildlife Service, North American Wetland Conservation Act Grant  
U.S. Fish & Wildlife Service, Section 6 Endangered Species Grant  
WI Department of Natural Resources, Knowles-Nelson Stewardship Program



Chowdhury, Mofazzal and Audrey  
 Claggett, Tom and Meg  
 Classon, Karen  
 Clay, Tom and Lisa  
 Coffman, Scott and Debra  
 Colburn, Marshall and Arlene  
 Cubar, Susan and Jordan, Tom  
 Demanes, Scott and Elisa  
 Dempster, Dorene and Herrell, Mark  
 Derksen, Jon and Susan  
 DeVries, Jim and Barrett, Maggie  
 DiBuono, John and JoAnn  
 Doneff, Robert and Lynn  
 Drouet, Christina and Michael  
 Elson, Christine  
 English, John and Claranne  
 Enright, William  
 Fales, Dennis and Mary  
 Fehring, Larry and Liz  
 Fickes, Robert and Liesbeth  
 Fiedler, Carol and Therien, Claude  
 Fredrick, Richard and Jane  
 Fritz, Don  
 Frudden, Bruce and Grace  
 Fuhrmann, Don and Barbara  
 Germain, Chuck and Faye  
 Gerrits, Dottie  
 Gills Rock Pottery  
**Gray, Patrick**  
**Hall, Lane**  
**Hartter, Klaus and Carol**  
 Haswell, Anthony  
 Haus, David and Jill  
 Henke, Jean  
 Holly, Mike and Deb  
 The Huff Family  
 Johnson, Albert and Cynthia  
 Johnson, Dave and Mel  
 Johnson, Dennis and Janet  
 Johnston, Mike and LeTourneau, Sara  
 Kalmbach, Charles and Lois  
 Kane, Ralph and Gretchen  
 Keller, Dr Tom and Marge  
 Kissel, Robert and Beverly  
 Paul Kneuppel Family  
 Kopecky, Rob and Cheryl  
 Kopitzke, Lon and Ruth  
**Korolewski, John and Sally**  
 Kosky, Judy  
 Kostecke, Keith and Jann  
 Laird, Ben and Rintelman, Mary Jane  
 Laske Family  
 Larsen, Bob and Sara  
 Larson, Eric and Lewis, Susan  
 Larson, James and Susan  
 Larson, Richard and Roberta  
 Lauter, Charles and Estella  
 Lecy, Jerry  
 Lecy, Mark and Deana  
 Loewi, Helen

Lokken, Ron and Judy  
**Long, Donald and Cheryl**  
 Luker, Don and Lynne  
 The Lynch Family Fund - Madison  
 Community Foundation  
 Madden, Michael and Barbara  
 Mahoney, Mike and Liz  
**Maloney, Kevin and Laura**  
**Mathys, Ken and Shawn**  
 McCarthy, Chip and Mary Jo  
 McLaughlin, Rick and Joan  
 McMillan, Florence  
**Moede, Alexandra**  
 Mohr, Wayne and Barbara  
 Molnar, Alex and Lindquist, Barbara  
**Mooney, Melissa and Schultz, Philip**  
 Nelson, Chris and Olin, Joyce  
 Neumann, William C  
 O'Brien, Frances  
 Olsen, Lawrence and Lynn  
**Ottum, Brad**  
 Pennington, Mark  
 Pikas, Bruce and Joan  
 Pope, Rex and Linda  
 Pritchett, Wendell and Kringel, Anne  
 Radtke, Al and Sue  
 Rakoczy, Joe and Marie  
 Rockway, Todd and Sheryll  
 Russell, Stan and Dorothy  
 Sannes, Randy and Sandy  
**Sawyer, John and Jacqueline**  
 Schaars, Bill and Mary Jo  
 Scheig, Katie  
 Schimp, Brian and Marcia  
 Schultz, Craig and Sandy  
 Schwartz, Carl and Barbara  
 Sherman, Jerry and Lipp, Carolyn  
 Slovin, Nathan and Julie  
 Small, Ron and Christine  
 Smith, Phil and Katie  
 Smythe, Dick and Mary  
 Sterner, Elsa and Frank  
 Sunnypoint Landscape  
 Sweeney, Michael and Barbara  
 Szuberla, Wayne and Geri  
**Thenell, Darlene**  
 Thoreson, Larry and Judy  
 Van Lanen, Jack and Fran  
 Virge Temme Architecture Inc  
 Voss, William and Trudy  
 Washington Island Ferry Line Inc  
 Wick, Tim and Cindy  
 Widder, Tripp and Nancy  
 Wilcox, Jock and Karen  
 Wilson, Doug and Vicki  
 Young, Jim and Margaret  
 Zuhlke, David and McKie, Jane

## \$250-\$499

Abbott, Ann  
 Ackell, Peter and Laurie  
 Agnew, Bob and Marge  
 Aik, Betty  
 Alexander, Kenneth and Mary Ellen  
 Allen, Mark and Fisher, Judith  
 Andersen, Bill and Heather  
 Anderson, Greg and Mary  
 Anderson, Jack and Susan  
 Andrae, Dan and Marjorie  
 Arduser, Bruce and Jane  
 Axelrod, Jon and Susan  
 Banks, Susan and Kendall  
 Barker, Lisa  
 Barrie, Tom and Sue  
 Baxter, James and Elizabeth  
 Bearman, Ken and Larsen, Karla  
 Beerntsen, Tom and Penny  
 Bhatheja, Alexis  
 Blackwood, Thomas and Joan  
 Blankenburg, Ralph and Kathy  
 Bleser, Helen  
 Blue Dolphin House  
 Brevard, Athelea, John and Vivian  
 Brophy, Michael and Debra  
 Brown County Graphics  
 Brown, Bob and Kathy  
 Buck, Ryan  
 Bultman, Tim and Ruth  
 Carmen, Sam and Vicky  
 Casperson, Greg and Debbie  
 Christensen, John and Mary  
 Coleman, Beth and Wessel, Curt  
 Colton, Erv and Bev  
 Craig, Richard and Barbara  
 Craig, Will and Ginny  
 Cummings, James and Lisa  
 Curtis, Al and Livingston, Jan  
 Debenham, Barb  
 Delaney, Don and Janice  
 DeLisle, Becky  
 Dickmann, Jeff and Karen  
 Diltz, Greg and Julie  
 Dobyns, Alicia Stenger  
 Doerr, David and Marilyn  
 Donnino, Joe and Sue  
 Donovan, Ronald and Christine  
 Donovan, Tom and Linda  
 Door County Eye Associates  
 Door County Ice Cream Factory  
 Door Landscape & Nursery  
 Dougherty, Tom and Linda  
 Dr Timothy Tishler DDS  
 Drake, Merton and Carol  
 Dull, Charles and Joanne  
 Eagle Harbor Inn  
 Eccles, Margaret

## Gibraltar Fourth Graders discovered a freshwater sponge and a Central newt, both new discoveries at the Aten-Collins Conservation Easement!

Photo by Grace Rossman



EcoDoor LLC  
 Ecology  
 Feeco International Foundation Inc  
 Feist, Tim and Braatz, Laurel  
 Filosa, John and Roach, Cathaleen  
 Forkert, Frank and Jan  
 Forsberg, Bob  
 Foster, Terry and Ginny  
 Francik, Jeffrey  
 Frey, Fred and Barb  
 Fults, Tim and Marsella  
 Gadiant, Stephen and Margaret  
 Gesme, John  
 Gimelli, Giorgio and Golestanian, Ellie  
 Tom and Kathy Girolamo at  
 EcoBuilding & Forestry, LLC  
 Glenn, Bill and Mardi  
 The Goldammer Family Foundation  
 Gomoll, Thomas  
 Graebner, Richard and Hanson, Gail  
 Guenther, John  
 Hartman Family Foundation  
 John and Laurel Hauser Family  
 Foundation  
 Hayes, Howard and Charlotte  
 Heeringa, Don and Coggin  
 Hendrickson, Duane  
 Herndon, Richard and Carol  
 Holey, Mark and Michaela  
 Hoppa, George and Nancy  
 Horn, Andrew and Patricia  
 Hubbard, Kenneth and Denise  
 Hubbard, Ron and Bev  
 Johnson, Arlene and Weidenbacher,  
 Chris  
 Judd, Robert  
 Kaercher, Ray and Susan  
 Kaufman, Marie  
 Klimaitis, Ron and Dougherty, Gloria  
 Klug, Jr, Karl  
 Herbert H Kohl Charities  
 Kopec, Joe and Karen  
 Korte, Joe  
 Krainak, Mike and Farber, Janet  
 Krol, Gary and Ekaterina  
 Kuehn, Gregg and Kathy  
 LaBorde, John and Lisa

Lacy, Mary Pauly  
 Landwehr, John  
 Larson, Paul and Corky  
 Lee, John and Claire  
 Lees, Lynn  
 Lengh, Robert and Carolyn  
 Lesica, Mike and Julie  
 Levi, John and Jill  
**Levine, David and Kaufman, Laura**  
 Lewis, Lloyd  
 Lhost, Cynthia and John  
 Lindahl, Bob  
 Lockhart, Alex  
 Lott, Peggy  
 Lundh, Christopher and Rebecca  
 Lundquist, John and Mary Ann  
 Lyons, Timothy and Julie  
 Madel, Margaret  
 Madigan, Brian and Naylor, Andrea  
 Maloney, Ron and Pam  
 Mazurkiewicz, Mike and Carol  
 Mazza, Peter and Mary  
 McAninch, James and Susan  
 McCoy, Bob and Sharon  
 McCutcheon, Mike and Windsor  
 McDonough, Dave and Colette  
 McNamara, Daniel and Debby  
 Merline, Robert and Linda  
 Moore, Chris and Sheri  
 Moster, Mary  
 Mullaney, Pat and Gail  
 Mutchler, Leo and Monica  
 Nelson, Joanne  
 Neuman, Paul  
 Norfray, John  
 O'Mara, Brian and Debbie  
 Panzer, Fred and Sandy  
 Parks, Bob and Cathi  
 Parrish, Todd and Shelley  
 Paschen, Doug and Terry  
 Peninsula Vision Care, LLC  
 Pepelnjak, Anna  
 Pescheret, Marc and Kathleen  
 Peshek, Peter A and Sharon A  
 Pinkert Law Firm LLP  
 Place, Sandra  
 Pojunas, Kathleen

Polacheck, Joe and Kathy  
 Potts, Greg and Marilyn  
 Rankin, Jim and JoAnne  
 Ranta, Bruce and Lyn  
 Reichwald, Harry and Carla  
 Riker, Terry and Gini  
 Ritchie, Rich and Jackie  
 Rogers-Ketterling, Kaye  
 Rosecky, Mary  
 Ross Estate Planning  
 Rossman, Cinnamon  
 Rossman, Glen and Grace  
 Rotilie, John and Susan  
 Saksewski, Dave and Hagene, Margie  
 Sanden, Jim and Kathy  
 Sauter, Martha  
 Scattergood, Kirk and Donna  
 Schaper, John and Susan  
 Scharfner, Julie  
 Schaulis, Dan and Cindy  
 Schoof, Robert F  
 Schouten, Thomas and Susan  
 Schroeder, Brent and Mary Kay  
 Schultdt, John and Moore, Mary  
 Schultz, Jim and Ginny  
 Schultz, Jim and Marti  
 Schulze, Gary and Bev  
 Schwartz, Harry and Chris  
 Scrivner, Tom & Meredith  
 Sessler, Greg and Kaufman, Dale Ann  
 Shadle, Neil and Lillie May  
 Sheard, Bart and Linda  
 Shields, Walt and Tiggy  
 Simpson, Kenneth  
 Slavik, Richard and Mary  
 Squier, Susan and Roper, Gowen  
**St Clair, Dave**  
 Stanger, Steven and Arlene  
 Stanley, Jerrel and Judy  
 Stock, Mary Jo and Tom  
 Surbaugh, William and Cheryl  
 Terra Cottages  
 The Garden Lady  
 Thurow, Dave and Posy  
 Tishler, Bill and Betsy  
 Trellue, Ron and Patty  
 Tuch, David and Barbara



# 2018 FINANCIAL SUPPORTERS

Urbrock, Bill and Barbara  
 Van Den Brandt, John and Jean  
 Van Gemert, Rob and Jensen, Marilyn  
 Van Zandt, Mike and Sue  
 Vopat, James and Theresa  
 Voreis, Mark and Allen-Voreis, Lucia  
 Wachowiak, Jerry and Lisa  
 Waldron, Merrilee and John  
 Walker, Richard and Melissa  
 Watkins, Norman and Mabel  
 Westbrook, Dan and Connie  
**Whiteside, Kathi**  
 Wilkie, Nancy and Charles  
 Will, Frederic and Korb, Joan  
 Wilson, Jim and Doris  
 Wilson, Nick and Demoly, Marc  
 Wojciechowski, Jim and Mastrangelo, Jane  
 Wolfram, Dan and Joan  
 Wood, David and Doughty, Jane  
 Woodyard, John and Pat  
 Ziarnik, David and Shelley  
 Zimmer, John and Bernie  
 Zuckerman, David and Madsen, Judy

## \$150-249

Alfred, Larry and Linda  
 Allen, Edson and Loretta  
 Alme, Brian and Luanne  
 Alt, Claudia J  
 Alt, Tom and Sue  
 Anderson, Jim and Jane

Anonymous (5)  
 Bacon, Lee and Inge  
 Bartolini, Vickie and Galuszka, Larry  
 Basten, Lee and Susan  
 Bay Ridge Golf Course  
 BayCare Clinic Foundation  
 Bither, Chuck and Leanne  
 Block, Bob and Bonnie  
 Bocek, Rick and Knutson Bocek, Bev  
 Bosman, Julie  
 Bosworth, Bob and Wendy  
 Boyd, Ken and Carol  
 Brogan, Gisela  
 Brogan, Julie  
 Brooks, Peter and Linda  
 Bultman, David and Marge  
 Burton, Paul and Fran  
 Bussard, Ken  
 Campbell, Kathy and John  
 Caviggiola, John and Kim  
 Chang, Robert and Reynolds, Sheila  
 Chomeau, Vinni, Jay and Taylor  
 Conway, Darrell and Susan  
 Cushman, Betsy and Preston, Barb  
 Cushman, Susan and Quimby, Charlie  
 Dammon, Ron and Candy  
 Damrow, Roger and Jean  
 Danis, David and Nancy  
 Davis, Dale and Jan  
 Detert, David and Joyce  
 Diekman, Karl  
 Differding, James C and James R Dicks  
 Doerr, Mike and Bobbi

Doyle, Charles and Rita  
 Dramm, Kurt and Marlene  
 Dude, Bob and Mary Ann  
 Eckert, John and Judith  
 Edmundson, Rob and Cathy  
 Elliott, Rob and Colleen  
 Engl, Robin R and Robin J  
 Evanson, Robert and Nancy  
 Everett, Curtis and Joan  
 Fallucca, Laurie  
 Feeney, Barbara  
 Ficken, Millicent S  
 Fiorato, Tony and Cathy  
 First Light Arts LLC - Jim Perry  
 Fogarty, Myrna  
 Franz, Jeff and Engs-Franz, Ruth  
 Freyman, Bill and Sarah  
 Froemming, Barbara D  
 Frunce, John and Betsy  
 Garrity, Dennis and Susan  
 Geiger, Chuck and Cheri  
 Gerrits, Nick and Katherine  
 Gilford, Steven  
 Glasser, Mark and Linda  
 Goodner, Dale and Mary  
 Gousseff, Marla J  
 Graul, Tim and Barb  
 Grotz, Carl and Jennifer  
 Halverson, Paul and Gloria  
 Hammen, Nancy  
 Hanke, Dale and Kathy  
 Hanney, Rick and Roxanne  
 Harter, Bernie and Schab, Lisa  
 Harsh, Dr David and Ann  
 Hauser, Richard and Carrie  
 Hawley, Robert and Blahnik, Jennifer  
 Hays, Bob and Donna  
 Hein, Marilyn M  
 Helm, Mary Jo  
 Helpert, Leslie  
 Hensge, Bill and Jane  
 Hersam, Larry and Joanne  
 Hickey, Dave and Pat  
 Hillner, Ed and Nancy  
 Hoffman, Dave and Liz  
 Holada, William and Mary  
 Holman, Dave and Barbara  
 Holub, Gregory and Mary  
 Hornick, Mark and Laurel  
 Horwitz, Bruce and Marla  
 Ingersoll, Shelby  
 Johnson, Nancy and Tom  
 Jome, Bob and Ruth  
 Jordan, Raeona  
 Kane, Terrence and Judith  
 Kasriel, Paul and Katy  
 Keith, Annie and Hurst, Mark  
 Kiedrowski, John and Deborah  
 Kiehna, Jason and Nancy  
 Kile, Lucy

Klatt, Mel and Shirley  
 Kluge, Bob and Rosemary  
 Konetzke, Steven and Carol  
 Kress, James  
 Kriha, Rob and Darcy  
 Kudick, Julie and Wayne  
 Kupper, John and Koestring, Janet  
 Lang, Carmen  
 Lawson, John and Anderson, Gail  
 Leavitt, Mitch and Jean  
 Leiterman, Mary  
 Lembck, Diane  
 Lenius, Harlan and Sharon  
 Lenke, Robert and Linda  
 Liederbach, Elida  
 Luvisi, George  
 Mahlberg, Marilyn  
 Martin, Mark and Sue Foote-  
 Masterson, Michael and Claudia  
 Mc Dermid, Debbie  
 McGrath, Maureen  
 McHolland, Jim and Cass  
 McKeon, Judi and Tim  
 Meiners, Alice and John  
 Memmen, Jim and Mary  
 Meyer, David and Corinne  
 Miller, James  
 Mix, Phoebe  
 Moegenburg, Pete and Laura  
 Mohr, Larry  
 Muderlak, Carol and Ken  
 Mueller, Paul and Ingrid  
 Mutchler, Keith and Sherry  
 Nabbefeldt, Scott and Peggy  
 Naples, Greg and Lynn  
 Nelson, Ken and Wendy  
 Neuman, Juliana  
 Newkirk, Martha  
 Newman, Peter and Castelli, Patricia  
 Nielsen, Camilla  
 O'Hagan, Pat and Karen  
 Oimoen, John, Denise, Kristin, Jenna  
 and Erik  
 Osowski, Edward L and Maryjo  
 Pettengill, Darnell  
 Pfeiffer, Mrs Gabriele F  
 Pingry, James and Mary  
 Quick, Doug  
 Reeve, James and Ann  
 Remy, Eugene and Pat  
 Rentsch, Lothar  
 Ripp, Dan  
 Rix, Bill and Jerri  
 Rogers, Franklin and Elisabeth  
 Rogers, Robert and Emily  
 Rothschild, John  
 Schanock, David and Kim  
 Scheig, Mary  
 Schmidlin, Brian and Caryl  
 Scholz, Carl and Ruth

**Schwartz, Maureen**  
 Schwartz, Neena B  
 Seefeldt, Andrew and Burton  
 Seefeldt, Jillaine  
 Seegers, Cynde  
 Seville, Mr and Mrs Joseph Y  
 Shannon, Dan and Hagman-Shannon, Deborah  
 Sherman, Jan and Art  
 Siegel, Ginny and Ross  
 Sijgers, Robert and Reid, Christine  
 Simon, Kathryn  
 Snapp, Erik and Brubaker, Cathy  
 Spavacek, Glenn and Kathleen  
 Starck, Paulette and Hyde, Jane B  
 Stenzel, Gary and Sue  
 Sternkopf, Richard and Barry, Kathleen  
 Stevenson, Nancy  
 Stringer, Steve and Jan  
 Swanson, Gerry and Micky  
 Taylor, Rick and Boucher, Karen  
**The Clearing**  
 Tilton, Dave and Oeler, Paula  
 Treleven, JT and Terry  
 Troutman, Bryan and Diane  
 Turriff, Tom and Jo Ann  
 Utley, Sarah and MacAulay, Angus  
 Van Dyke, David and Mary  
 Van Dyke, Kieth and Cindy  
 Voigt, Ken and Sue  
 Volk, Gregory and Gretta  
 Wagner, Kaye  
 Wagoner, Andrea and Ruggeri, Roger  
 Webber Chiropractic Office  
 Werner, Jack and Hester  
 Whitney, John and Jane  
 Wienkers, Kevin and Cindy Ann  
 Wiley, George and Sally  
**Wilson, Dawn**  
 Winzenz, Jerry  
 Wise, Karl and Jane  
 Wittenkeller, Al and Judy  
 Wojahn, Dennis and Karen  
 Wyman, Anne and Glau, Richard  
 Yeast, Gary and Barbara  
 Youngsteadt, Duane and Leslie  
 Zaug, Jerry and Joan  
 Zimmerman, Stephen

Anderson, Bill and Candy  
**Anderson, Brian and Rozan**  
 Anderson, Joyce L  
 Anderson, Linda  
 Anderson, Paul and Erika  
 Andrews, Kristen  
**Angst, Dan and Kolb, Carolyn**  
 Anonymous (6)  
 Armstrong, Lloyd and Susan  
**Ascher, Cynthia**  
 Asher, Barbara M  
 Asp, Robert and Michele  
**Astor, Ray**  
 Aufreder-Sebetic, Jacqueline Leonie  
 Aulabaugh, Norman and Carol  
 Auricchio, Errico and Patrizia  
 Axelrod, Michael and Roberta  
 Bachman, Kristen  
**Bahner, Gail**  
**Baierl, Charollette and Amundsen, Marcus**  
 Banzhaf, Harry B  
 Barnard, Franca  
 Barounis, Tom and Diane  
 Barta, Bud and Marilyn  
 Bartoli, Beth  
 Bartolini, Susan and McMillan, Michael  
 Bauer, Dorothy  
 Bauer, Tom and Mary Anne  
**Bauer, Tom and Melanie**  
 Bauhs, Richard  
 Bauman, Kathy  
**Baumann, Galena**  
**Beck, John**  
 Beckett, Caroline  
 Behme, Bill and Veronica  
 Bell, Mary and David  
 Benedict, Roger and Christensen, Paula  
 Bengston, Dirk  
 Bennett, Carl and Broeren, Sue  
 Bennett, Joan E  
 Bennett, Thomas J and Nancy J  
 Benson, Donna  
 Berg, Keith and Hedblom, Mary  
 Berggren, Janet and Ken  
 Berk, Avi and Laurie  
 Berkeley, Anne  
 Berkenstock, Jim and Jean  
 Berns, Donald and Linda  
 Bezouska, Bob and Mary  
 Bicoy, Bret and Cari  
 Binder, Susan  
**Birr, Lori**  
**Bishop, Bruce and Cheryl**  
 Bither, Philip and Gavin, Kathleen  
 Blahnik, James and Judith  
 Bleckwenn, William  
 Block, Jim and Allen, Terese



**Land Protection and Stewardship Specialist Jesse Koyen, right, led a group from The Clearing for the annual winter 'Pubs, Parks and Preserves' class.**

Photo by Amanda Pyke



Bloedorn, Michael and Lucy  
**Blue Horse Cafe**  
 Bock, Barbara  
 Boehnlein, Lynn  
 Bogenschutz, Corey  
 Bork, Barbara  
**Boyce, Christopher and Laurie**  
 Boyd, Nancy  
 Boyer, Wayne and Eleanor  
 Bradley, Libby and Jim  
 Branson, Beverly H  
**Breilant, Hal and Patti**  
**Brennan, Jeanine**  
 Breseman, Mark and Hillstrom, Jane  
 Bresnahan, Julia  
 Breving, Bob and Rosenberg, Emily  
 Brown, Jerry and Judy  
**Brueckbauer, John**  
 Buresch, Jane and Propsom, Rich  
**Brunswick, Scott and Lynn**  
 Bryntesen, Jordyce  
**Brzezinski, Drew**  
 Bubnik, Paul and Gretchen  
 Budic, Peter and Ruth  
 Buechner, Dave  
**Bulgrin, Kendra**  
 Bunker, Tom and Sally  
 Burkhardt, Jeffrey and Jeanine  
 Burkhardt, Jon and Karen  
 Burlend, Warren and Nancy  
 Burress, Dick and Jane  
**Burton, Rick**  
**Caelewarts, Carol**  
**Calle, David**  
 Cance, John and Iris  
 Canter, Sharon and Richard  
**Cardella, Karina**  
 Cardiff, Joe  
 Carey, George and Linda  
 Carpenter, John and Julie  
 Casagrande, Gary and Teri  
 Case, Karen A  
**Cassidy, BJ**  
**Catarozoli, Kelly**  
 Cedar Hill Associates, LLC  
 Chan, Carlyle  
 Chelmecki, Tony and Trudy  
 Chopp, Jack and Claudia  
 Christenson, Toni  
 Christiansen, Bruce and Laurie, Susan  
 Christiansen, Dave  
 Christy, Stephen and Jennifer  
 Giszewski, Jerry and Elaine  
 Clark, Daniel and Miller-Clark, Mary  
 Classic Boat Tours of Door County LLC  
 Clay, Erik  
 Cobb, George and Sharon  
 Cochrane, Pete and Sandy  
 Collins, Pam and Tom  
 Conner, Kathy

**Cook, Jean**  
 Cooper, Terrie  
 Cory, Mr and Mrs William  
 Cosgrove, Michael and Julia  
 Cote, Phil and Miriam  
 Cotts, Bill and Wilson, Carol  
**Coulon, Joanna**  
 Coulon, Mae  
**Courtney, Gretchen**  
 Covalt, Robert  
 Cowan, Karen  
**Cowles, Rob**  
 Cramer, Chris  
 Cramer, Joe and Donna  
**Crass, Sue**  
**Cravens, Dee and Kirstin**  
 Cristall, Peter and Myra  
 Crocco, Syndi and John  
 Cushing, Jim and Marilyn  
 Custer, Mitch and Sandie  
 Czajkowski, Ned and Carol  
**Czar, Sarah**  
 Dahlman, Jack and Betty Jo  
**Daniels, Barbara**  
 Dannhausen, Richard H  
**Daubner, Chris**  
 Dave's Tree Services Inc  
 Davie, Susan DeWitte  
 De Boef, Connie  
 Deardorff, Stuart and Robyn  
 DeLong, Paul and Myra  
 Demarest, Courtie  
 Demaster, Larry and Sandy  
 DeMint, Tom and Judy  
**DeNamur, Sarah and Charlie**  
 Desotell, Larry and Wied, Debbie  
 Devitt, H William  
 Dickson, Bob and Liz  
 Dickson, Charles W Jr  
 Dickson, Jay and Nancy  
**Diehl, Kjerstin**  
 Diehl, Scott and Cheryl  
**Dietrich, John and McNeil, Diane**  
**Dimitrov, Stoyan**  
 Dinan, Stephen and Joan  
 Dinesen, Niel  
 Dirst, Victoria and Miller, Allen  
**Dittemore, Rick and Mary**  
 Domiano, Steven and Stephanie  
 Dorn, Dennis and Maribeth  
 Douglass, Ed and Adele  
 Dowell, Linda  
 Draeb, Joan  
 Drey, Robert and Cynthia  
 Dries, Bob and Jeanne  
 Dubois, Paul and Karen  
 Duffin, Carol  
 Dukehart, Tad and Andy  
 Dukes, Jack and Mary  
 Dunworth, Bob and Mary

## **Guests at the Kangaroo Lake Dining for Open Spaces event set off for a sunset cruise with captain (and host) Mark Huber**



Dupuy, Mark and Toft, Trudy  
 Dwyer, Amy Watts  
 Ealy, Tom and Linda  
 Edelman, Daniel  
 Egan, Richard and Anne  
**Eggers, Patricia Mueller**  
 Ehlers, D Todd and Cynthia  
**Ehrbar, June**  
 Ehrfurth, John and Linquist, Ann  
 Elder, Randall  
**Eley, Tom and Victoria**  
**Ellingson, Steve and Katie**  
 Ellis, James and Karen  
 Ellsworth, James and Patti  
 Elquist, Roy and Diane  
 Emmerich, Gerald and Signe  
 Enroth, Mary  
**Epstein, Anne**  
**Erbe, Julie**  
**Erbe, Richard**  
 Eric, Bob, and Nanette Franze  
 Erickson, Miriam  
 Erskine, Tim and Holly  
**Esau, Tom**  
 Evenson, Phil and Carolyn  
**Evenson, Sarah**  
 Everhardus, Sally  
 Ewaskowitz, Jeff  
 Fagiolo, Joseph and Mary  
 Falk, Janis  
**Falk, Matthew**  
 Fandrei, Loren  
 Farber, Marcia  
 Farnan, Laurie A  
**Fasciano, Susan Nicholas**  
 Fasciotti, Hank and Mary  
**Fay, Randi**

**Fearing, Andrea**  
 Fedenia, Sue and Stanley, Jeff  
 Feirer, Russ and Debbie  
 Ferris, Ken and Beth  
 Ferry, Mr and Mrs Ken  
 Fields, Chuck and Carolyn  
 Fine Line Designs Gallery  
 Fink, Bob and Marge  
 Fiore, Michael and Beth  
 Fish Creek Moccasin Works  
 Fitchett, George and Judith  
 Fitzgerald, Pat and Judy  
 Flansburg, Ronald and Jean  
 Florin, Jack and Gail  
 Ford, Chris, Ali, Will and Nick  
 Ford, Martin and Hilary  
 Fortin, Guy and Samida, Judy  
 Foss, Kirby and Margaret  
 Foster, Richard and Mary  
 Fox, Jim and Luann  
 Frazier, Jay and Alison  
 Freilly, Betty  
 Freilly, Mike and Don  
 Friedberg, Gerri  
 Frunceck, Ron and Theresa  
**Frykman, Tyler and Lusk, Ashley**  
 Fuller, Dan and Lois  
**Gafney, Diane**  
 Garrity, Jerry and Lois  
 Gaskell, Judith  
 Gaskill, Warren and Sharon  
**Gast, Kimberlee**  
**Gatenby, Anthony**  
 Gathany, Van and Hildy  
**Gauger, Elizabeth**  
 Gauger, Stephen and Aimee  
 Genskow, James and Judy

**Germain, Cynthia**  
 Gershan, Bob and Jill  
 Gilson, Mike  
 Gissell, George  
 Glessner, Kay  
**Godres, Honneli**  
 Goeppinger, Lynn  
**Goetz, Janis**  
**Goetzman, Michael**  
 Goldberg, Larry and Barbara  
 Goodrich, Ellen  
 Gordon, Brad and Judy  
**Gotstein, Laura**  
**Goyette, Jason and Amy**  
 Graff, Jerry and Ann  
 Graham, David and Elizabeth  
**Graupner, Chuck and Deb**  
 Green, Andrew and Louise  
 Greene, Tad and Debbie  
 Grier, Cathy  
 Groenfeldt, Tom and Keli  
 Grzechowiak, Dale and Janda, Melissa  
 Guasta, Joan  
 Habschmidt, Jim and Paula  
 Hage, Eric and Denise  
 Hale, Mary Jean  
 Hamann, Jim and Jane  
 Hammerberg, Lucy  
 Hammerberg, Wally and Norma  
 Handrich, Steve and Peggy  
 Hanke, David and Terri  
 Hanreddy, Jami and Joe  
 Hansen, Betsy  
 Hanson, Curtis and Sarah  
 Hanson, Gretchen  
 Hanson, Jon and Bonnie  
 Harding, Ruth and Jeff

Harmon, George and Judy  
 Harsch, Roy and Leslie  
 Hartmann, Bob and Bonnie  
 Hat Head - Bob and Bonnie Spielman  
 Hatch, Mick and Lisa  
 Hazen, Kimberly  
 Heath, Bill and Darlene  
 Hebal, Bill and Katie  
 Hediger, Al and Karen  
 Hedquist, Pat and Susan  
 Heier, Richard  
 Heil, Richard and Carol  
 Held, John and Grace  
 Hellstedt, Linda  
 Henderson, Barbara and Doug  
**Hendrix, Tom and Lisa**  
 Henger, Gary and Jo Ann  
 Henrichs, Mel and Ruth  
 Henshaw, Cullen and Sally  
**Herbst, Giz and Linda**  
 Herbst, James E  
 Heyer, Kay  
 Heyse, David and Ann  
**Hilbert, Georgia**  
 Hilbert, Roger and Danette  
 Hilbert, Ryan and Jessa  
**Hildebrand, Dennis and Montavon, Mary**  
**Hilst, Derek and Cheryl**  
 Hilton, Ron  
 Hippler, Steven and Marcy  
 Hitch, Gregory  
 Hoelzel, Jim and Linda  
 Hoffman, Gill and Barbara  
**Hoffman, Laurie**  
 Hoffman, Leon and Sue  
**Hoganson, Bob and Vicky**  
 Hole, Sarah  
**Holmes, Lisa**  
 Honig, Jim and Sheryl  
 Hoover, Robert and Rebecca  
 Houston, Kate  
 Howard, Phoebe  
 Howe, Eric and Wegner, Kristin  
**Hubbard, Rich and Rose**  
 Huber, Mark and Haig, Nari  
 Hubing, Dan and Kathy  
**Hudak, Ali**  
**Hueffner, Steve**  
 Hughes, George and Sue Raye  
 Hultman, Mary and Barb  
**Hunt, Mark and Sue**  
**Hurley, Patrick**  
 Hutchins, Ann L  
 Huth, Glenn and Dorothy  
 Hutmacher, Michael and Carol  
 Ihlenfeld, Lynn  
**Ingrouille, Laura**  
 Isaacson, Nancy  
 Isensee, Karen



# 2018 FINANCIAL SUPPORTERS

Jacobs, Gail  
 Jacobs, Steve and Amy  
 Jacobson, Tim  
 Janda, Louie and Rosie  
 Janes, Robert and Jill  
 Jarosh, Joe and Sue  
**Jaros, Jeff**  
 Jaskunas, Jeremy  
 Jaskunas, Richard and Sharron  
**Jennerjohn, Mark and Tina**  
 Jennings, Jon and Amy  
 Jerdee, Ann  
 Johnson, Alan and Gail  
 Johnson, Dale and Michele  
 Johnson, Darrell and Dianne  
 Johnson, Jeff and Sue  
 Johnson, Marilyn  
 Johnson, Sandra  
 Johnson, William  
 Johnson, William and Kristine  
 Johnston, BJ and Linda  
 Jondahl, Thor and Darlene  
 Juel, Vernamæ  
 Jurs, Allan and Sue  
 Kalb, Judith  
 Kaldor, Dennis and Patricia  
 Kalupa, Anthony and Linda  
 Kanas, Richard and Moore, Linda  
 Kanzler, Barb  
 Karch, Mr Michael and Reverend Katherine  
**Kay, Anna**  
 Kearney, Doug and Anne  
 Keating, Julie and Terry  
 Keck, Krista  
 Keefer, Mary and James  
 Keen, Dave and Perkins, Judy  
 Keene, James  
 Keene, John  
 Keller, Charles and Barbara  
 Keller, Craig and Kari  
**Keller, Stephen and Anna Marie**  
 Kelly, George and Zatlin, Phyllis  
 Kemmler, Mike and Lori  
 Kennedy, Michael and Carol  
 Kepper, Martin and Karen  
 Ketterer, Margaret and Robert  
 Kexel, Duane and Jo Ann  
**Khitsun, Andrew**  
 Kierstyn, John and Karen  
 Kimbell, Bob and Carolyn  
 King, Mark  
 Kinoshian, Bob and Sue  
 Kinsey-Jauquet, Andrea  
**Kintopf, Alan and Linda**  
 Kirgues, Patricia  
 Kirkwood, Rhonda  
 Kita, James and Meyers-Kita, Patricia

Klepp, Dottie  
 Kluessendorf, Lucy and Jerry  
 Klug Associates Inc  
**Knapp, Eric and Jeanine**  
 Kneip, David and Ellen  
 Knowles, Richard A J  
 Knox, Merritt and Julie  
**Knutson, Jerrold and Melinda**  
 Kochaver, Teresa  
 David and Kendall Koehler Family  
 Kolberg, Linda L  
**Kolden, Errin and Lynnae**  
 Kopf, Angie  
**Koyen, Jesse and Rock, Sam**  
 Kozicki, Chris and Jane  
**Krall, Ed and Eileen**  
 Krapf, Wiley and Roselyn  
 Krause, Tim  
 Krautkramer, Jim and Cindi  
**Krebs, Jerry and Jean**  
 Krings, Steven and Margaret  
 Krueger, Dean and Judith  
 Krueger, Tom and Kim  
**Kruse, Christopher**  
 Krutek, Don and Brigid  
 Krutek, Paul and Fran  
 Kubicz, Agnes  
 Kuehn, Andy  
**Kuehn, Blake**  
**Kuehn, Charles and Jane**  
 Kuffrin, Bob and Lainie  
 Kurtz, Gary and Nancy  
**Kussart, Gene and Pauline**  
 Laluzerne, David and Lynn  
 Lang, Merlin and Carol  
 Lange, Jeff and Brenda  
**LaPlant, Peter**  
 Larsen, Ben  
**Larson, Marge**  
 Later, Tim and Field, Mary  
**Lau, Katlyn**  
 The Lauter and Passananti Family  
 Lawler, Elizabeth  
 Lefebvre, Terri and Campshire, Joe  
 Legois, Jason, Jen, Jackson, and Jameson  
 Lehmann, Emmet  
 Leist, Michael and Patty  
**Lemburg, Keith**  
**Lenahan, JC**  
 Lenahan, Roma  
 Lenius, Norb and Pat  
 Leonard, Judie  
 Leonard, Richard  
**Leonard, Susan**  
 Lepkowski, Cynthia  
 Leporte, Lawrence and Elfriede  
 Levar, Frank and Brooks-Levar, Judith

Lewcock, David and Danielle  
 Lewcock, Jack  
 Lewcock, Joe  
 Lewinski, Chris and Rachael  
 Librizzi, Charles  
 Liebmman, Bert and Diane  
 Lincoln, Jim and Eleanor  
**Linden, Art**  
 Lindgren, John and Elsie  
 Liss, Paul and Jan  
 Livengood, Susan  
**Livingston, Jay and Sarah Meredith**  
**Livingston, Leland and Andy**  
 Locher, George and Patricia  
 Longert, Jack and Lyman, Kate  
 Lorenz, Nancy  
 Loss, Robert and Doris  
 Loy, Phil and Judy  
 Luchterhand, Kubet  
 Lucier, Larry and Jeanne  
 Lundstedt, Tom and Charli  
 Luning, Thomas and Betty  
**Lutsey, Jeff**  
 Lutzen, Robert and Valerie  
**Lux, Richard and Mary**  
 Lynch, Steve and Rose, Amy  
 Lyndahl, Dale and Kay  
 Lyon, Tom and Barbara  
 MacEachern, Mike and Alicia  
**Mahar, Michael and Shaw, Mary**  
 Malchow, Jan and Lynn  
 Mallien, Larry and Barbara  
 Maltman, Lizabeth  
**Mancheski, Anna**  
 Maras, Jeff and Amy  
 Marlett, Myron and Pat  
 Maronek, James and Carole  
 Marquis, Robert and Kelly, Carol  
 Marsho, James and Nancy  
**Martin, Gary**  
 Martin, Lucy  
**Martinez, Demaris**  
**Martinez, Tony**  
 Masiak, Cory  
 Mason, Jeffrey and Elsie  
 Mason, Ron and Carol  
 Mathewson, Randy and Karen  
 Matousek, Ron and Louise  
 Mayer, Irene  
 Mayheu, Stephen  
 McCain, Douglas  
**McCarty, Colleen**  
**McClenahan, Bill**  
 McCluggage, Lee and Sandy  
 McCurdy, Bob  
 McDonald, Marilyn  
**McGaw, Jessica**  
 McGee, Doug  
**McHugh, Kristin Thorson**  
 Law Office Of Peter McKeever

McKie, Eldon and Kathryn  
**McVey, Ed**  
 Meiborg, Diane and Zacek, Roger  
 Mellem, Roger and Connie  
**Mersberger, Jacob and Jeanne**  
 Meyer, Elizabeth C  
 Middendorf, Jim and Peg  
 Middleton, Fred and Judy  
 Miller, Bill and Diane  
 Miller, Jack and Jane  
**Miller, Keith and Spielman, Bethany**  
 Miller, Marvin and Audrey  
**Miller-Larson, Ann**  
 Milske, Jodi  
 Mitchell, Judith  
 Moeller, Mark and Jennifer  
 Molitor, Daniel and Tracy  
 Moore, Bill and Sandy  
 Moore, Craig and Karen  
**Moore, Rob and Sherry**  
**Morgan, Michael and Ann**  
 Morris, Greg and Terry  
 Morrison, Michael  
 Moses, Marilyn  
 Motyka, Steve and Mary  
 Mrazek, Joe and Janet  
**Mudrak, Ray and Pat**  
 Mueller, David and Erin  
**Mueller, Judith**  
 Mueller, Ken and Judy  
 Malchow, Peter  
 Murphy, Beth  
**Murphy, Carrie**  
 Murphy, John and Dorothea  
 Musiel, Tammy  
 Musolf, Gene E  
 Naleway, Wally and Elaine  
 Needelman, Jerry and Margie  
 Neiman, Dick and Judy  
 Nelesen, John and Shirley  
 Nellen, James and Joan  
 Nelson, Bill and Kay  
 Nelson, Bruce and Cindy  
 Nelson, Doug and Judy  
 Nelson, Jim and Judi  
 Nelson, Randy and Jane  
 Nelson, Rick and Patty  
 Nelson, Samuel  
 Neuman, David  
 Neuman, Mike and Beth  
 Neuman, Pat and Stacey  
**Nevins, Nancy**  
**Newbern, Karen Mytas**  
 Nicolet Bank  
 McCurdy, Bob  
**Nordeen, Bill**  
 Norsetter, John and Rhonda  
 Norz, Ann Elder  
**Notz, John K**  
 Nowak, Peter and Jean Ann



*Hikers discovered countless tiny frogs, just emerged from Lake Mackaysee on Chambers Island.*



Ocock, Glenn  
**Ohnesorge, Mitch and Gloria**  
**Olson, John and Susan**  
 The Orchardist  
**Orlock, Michael and Liz**  
 Orthober, Mike and Lorie  
**Ortinau, Jeff and Nancy**  
 Ortlieb, John and Judith  
 Ostrand, Madelyn  
**Otopalik, Doug**  
 Ott, Sandie  
 Page, Susan  
 Palmer, Jason and Jamie  
 Pardonner, Don and Reninger, Judy  
 Parent, Steve and Mary  
 Parker, Cheryl and Lavell, Stephen  
 Parsons, Robin M  
 Passen, Phil and Gregorich, Barbara  
 Patera, Edward and Ellen  
**Paul, Norman and Amy**  
 Pedersen, Sverre and Falck, Christine  
**Peloquin, Peter and Melissa**  
**Pelrine, Gerald**  
 Pentler, Glenn and Kathy  
 Perkins, Marcia Cushman  
 Peters, Stefan and Glenna  
 Peterson, Janet  
**Pfeifer, Karen**  
 The JC and Arlene Pfeiffer Fund of the Winona Community Foundation  
 Phipps, Ken and Diane  
 Piehl, Rich and Ann  
 Pierson, Cal and Trish  
**Pintar, Angela**  
**Piotrowski, Constance**  
**Piper, Walter and Catherine**  
**Pirrung, Andrew**  
 Poehlman, Art and Sandra

Polacek, Thomas and Lynn  
 Polzin, Donald and Jacqueline  
 Popiel, Michael and Sharon  
 Popour, Lyle and Nancy  
 Porter, Bill and Anne  
 Porter, Harry  
 Postles, Jeff and Therese  
**Pothner, Jennifer**  
 Potter, Judy  
**Prange, Ashley**  
 Prindle, Peggy  
 Protz, Jane  
 Protz, Janet  
 Quale, Ann  
 Queenen, Allen and Karen  
 Quigley, Mike and Mary  
 Quirsfeld, David and Kathleen  
 Raaths, Jack and Susan  
**Raben, David and Jane**  
 Radandt, Scott and Knippel, Bonnie  
**Radant, Robert**  
**RaeAnn, Shannon**  
 Rafal, Nancy  
 Ralston, Doug and Nancy  
 Rand, Milton and Jane  
**Rawls, Donald and Lisa**  
 Reddin, Jon and Mary  
 Reed, Stephen D  
 Regnier, Paul and Cindy  
**Reinke, Drew and Jess**  
**Reisen, Deborah**  
 Reiser, Dale and Maureen  
 Repp, Pete and Shirley  
 Richards, Jim and Marianne  
**Richrath, Scott**  
 Rieder, John  
 Ries, Jane  
**Rieth, Anthony**  
 Riley, John and Lynn



Risser, Joyce  
**Riva, Dave and DuBois, Amy**  
 Roback, David and Virginia  
 Robinson, Richard and Gail  
 Rogers, Jim and Kitty  
 Rogers, Robert and Laura  
 Romano, Eileen  
**Rose, Molly**  
 Rosenthal, Deborah  
 Rothwell, David and Mary Ellen  
 Rowdon, Noelle  
**Russe, Sarah**  
 Ryan, Bob and Sue  
 Ryan, Caroline  
**Rybak, Alana**  
 Ryder, Ingrid S  
 Sadler, Frank and Annie  
**Sailing, Kara**  
**Saksewski, David and Hagene, Margie**  
**Samson, Steve and Peggy**  
**Samuelson, Lane**  
 Sanford, Lynda  
 Santora, Gery and Jackie  
 Sargent, Nancy  
 Scheckler, Bill and Rolliana  
 Scheil, Steve  
 Schlitz Audubon Nature Center  
 Schluter, Ernest and Betty  
**Schmelzer, Josiah**  
**Schmelzer, Linnea**  
**Schmelzer, Luke and Hatfield, Lucy**  
**Schmelzer, Noah**  
**Schmidt, Fritz**  
 Schneider, Allan and Betty  
 Schneider, Mike and Cindy  
 Schneider, Tom and Sarah  
 Schoof, Tamara Su  
 Schorer, Jim and Kriss  
 Schrader, Jan and Dave  
 Schranz, Ann  
 Schroeder, David and Delores  
**Schroeder, Kelly Ann**  
**Schroeder, Molly**  
 Schudson, Charlie and Karen  
**The Schuelke Family**  
 Schueppert, Tom and Mac  
 Schulte, Joe and Catherine  
**Schultz, Tim**  
 Schumacher, Paul and Logerquist, Deb  
**Schuster, Bill**  
 Schuster, Dorothy  
 Schwengel, Jim and Judy  
 Scott, Carol  
 Scripp, John and Susan  
 Seagren, Warren and Barbara  
 Sedlacek, Warren and Joan  
 Seidl, Dan and Jane Kolstad  
 Selke, Esther  
 Serrahn, Janet  
 Serrahn, Robin

Settles, Bob and Laurel  
**Shanahan, Kathleen**  
**Sharpe, Lindsay**  
 Shea, Larry and Shelley  
 Shelgren, Lois  
 Shellswick, Leon and Betty  
**Sherbert, Chris**  
 Shereikis, Judith  
 Sholem, Tank and Susan  
 Shoreline Charters, LLC  
 Short, Gregory and Joyce  
 Sieker, Fritz and Van Glarik, Janet  
**Sikora, David and Matzelle, James**  
 Silberman, Ann Monteith  
 Silverwood, George and Patricia  
**Simon, Chad**  
 Simpson, Mona B  
 Skaff, Larry and Franie  
 Skahen, Dennis and Marguerite  
 Skoglund, Bob and Janet  
 Skogsbakken, John and Pat  
 Slater, Janet  
 Smith, Babs  
**Smith, Gary and Dianne**  
 Smith, Greg and Alice  
 Smith, Helen K  
 Smith, Jim and Kay  
**Smith, Kate**  
 Smith, Ken and Nolde, Judy  
 Smith, Lee and Sue  
 Smuda, Jerald  
 Snowball, W David  
 Soffa, Marguerite  
 Sokol, George and Chrissy  
 Sorensen, Larry and Kathleen  
 Spangler, Mary S  
 Speerschneider, Marilyn  
 Sperberg, Elizabeth  
 Spoerke, Bob  
 Sprague, Mark  
**Squier, Virginia**  
 St Dennis, Aletha  
 State Farm Insurance  
**Stearney, Jonathon and Lynn**  
**Stefaniak, Heather**  
 Stein, Harry and Heimerl, Kristine  
 Steiner, Bruce and Carol  
 Stenger Riplinger, Cynthia and  
 Riplinger, Mike  
**Stevens, Bill**  
 Stiefel, John  
 Stocking, Trish  
 Stoelting, Paul and Carol  
**Stollenwerk, Dan and Rachel Parr**  
 Stonypath LLC  
**Stordeur, Margie**  
 Stover, Thomas  
 Stowe, Dennis and Kathy  
 Stowell, Janice Y  
 Stelow, Larry

Stricklin, Carol and Glenn  
 Strobel, Jeffrey  
 Strupp, Tom and Linda  
 Studio 768 LLC  
 Stultz, Rich and Jenni  
 Sucharda, Rick and Sue  
 Sullivan, Bob and Rita  
 Swearngin, Sherry  
 Sweeney, Josh and Meredith  
**Swingen, Kelly**  
 Tank, Rick and Kathy  
 Tarczewski, Eugene and JoAnn  
 Taylor, Charles  
**Taylor, Joe**  
**Therrien, Cherie**  
**Theys, Joan**  
**Thompson, Floyd and Eileen**  
 Thompson, Marti  
 Thomson, Cheryl  
 Toney, Mike and Carrol  
 Top O The Thumb Snowmobile Club  
 Toth, Susan and Peirce, Nancy Jane  
 TR Pottery  
 Tranquilli, Bill and Sue  
 Travis, Jack and Morgan, Diane  
 Tuohy, John and Anne  
 Turner, Ron and Millie  
**Tveite, Paul**  
 Tyndall, Jim and Maryann  
**Ulrich, Brooke**  
**Umentum, Steven**  
**Urbanik, Bruce and Denise**  
 Urbanik, Ron and Maggie  
**Valitchka, Luke and Sherri**  
**Van De Carr, Jan**  
 Van de Ven, Anne and Richard  
**Vandenberg, Kathryn**  
 Vanderheyden, Todd and Michele  
 Vass, Joe and Barbara  
 Vervoren, Thora  
 Villagers Snowmobile Club  
 Vincent, John and Annette  
 Vogel, Mary  
 Vuksanovic, Rob and Cathy  
**Wagner, John**  
 Wahi, Bob and Barba  
**Wahlen, Melanie**  
 Waitkus, Phil and Audrey  
 Waldron, Steve and Laura  
 Walesh, Steven  
**Wallace, Carl and Darcy**  
 Waller, Ashton and June  
 Walsh, Bill and Adele  
 Walsh, Jim and Ann  
 Walters, Mark and Diane  
 Walwark, James and Polly  
**Walz, Dennis**  
 Wanda, Nick and Jane  
 Warren, Iver and Kathleen  
 Warth, Robert and Mary

Watson, Al and Maribeth  
 Weber, John  
 Webster, Chuck  
 Welch, Nancy  
 Wellhausen, Donna  
 Welsing, Pat and Jane  
**Wenzel, Erich**  
**Werner, Debbie**  
**Wessels, Bill and Trudy**  
 Westen, Dave and Liz  
 Whipple, Thomas and Christine  
**White, Bill**  
 White, David and Lynn  
 Whitney, Susan  
 Wilde, Greg and Jean  
 Wilder, Nick and Keven  
 Wilkie, Joan  
 Wilkinson, Karen  
 Willer, Mary  
 Williams, Clyde and Marsha  
 Wilner, Gary and Dorry  
**Wilson, Dennis and Jean**  
 Wilson, Mary E  
 Wilson, Todd and Joan  
 Winkler, Lee  
 Wissink, Steve and Janet  
 Wittkowski, A and Salick, L  
 Wittmann, Thomas and Beth  
 Woelfel, Dan and Arlene  
 Woelfel, David and Joy  
 Wolf, Terry and Debbie  
**Wolfe, Brenda**  
 Wolfenberg, Jim and Janet  
 Wolst, Henk and Buttons  
 Wolter, Rich and Cindy  
 Wood, Patricia A  
 Woodruff, Tony and Grace  
 Woodside, Terri Witthuhn  
 Wrede, Jan and McFarlen, Jerry  
 Wulle-Dugan, Kate  
 Wyandt, Dorothy  
 Yeomans, Geoffrey and McKeefry, Bruce  
**Yost, Donna**  
 Young, Larry and Kate  
 Young, Norma  
 Young, Raymond and Jean  
 Yunker, Bill and Virginia  
**Zaeske, Adam and Cathy**  
 Zakry, Dennis and Suzanne  
 Zamora, Margarita  
**Zapotocny, Douglas**  
 Zehner, Diane  
**Zehr, Alison**  
 Zeldenrust, Lucy  
 Zeller, Dwight and Pam  
 Zigler, Ron and Sylvi  
 Zilavy, Jack and Barbara  
 Ziman, Rudy and Shirley  
 Zimmer MD, Michelle

Zwick, Kenneth and Hollar, Carol  
 Zweifelhofer, Peter and Sarah

## MATCHING GIFTS

AmazonSmile Foundation  
 American Family Insurance  
 Benevity Causes  
 GE Foundation  
 Google, Inc  
 IBM  
 Kimberly Clark  
 Legal & General Investment  
 Management America  
 Nordstrom  
 Pfizer Foundation  
 The McKnight Foundation  
 Thrivent Financial/Thrivent Choice

## IN-KIND GIFTS

Blacksmith Inn  
 Blue Horse Cafe  
 Bocek, Rick and Knutson Bocek, Bev  
 Chase, John and Kellie  
 Classic Boat Tours of Door County LLC

Current Designs  
 Ecology  
 Edgewood Orchard Galleries  
 Eggert, Dan  
 Flemming, Lissa  
 Grasse's Grill  
 Island Orchard Cider  
 Keen, Dave and Perkins, Judy  
 Kick Ash Products  
 Larsen, Bob and Sara  
 Lengh, Robert and Carolyn  
 Malone Auto Racks  
 Ottum, Jeff and Barb  
 Peninsula Kayak Co  
 Pettengill, Darnell  
 Ritchie, Rich and Jackie  
 Rutabaga Paddlesports LLC  
 Schrab, Geri  
 Telfer, Lee and Ruth  
 The Lodge Radio Group  
 Werner Paddles  
 Wiltse, Curtis and Roxanne  
 Zanitsch, Tracy



Photos by Dave Hellman

## GIFTS FROM YOUR IRA

If you are more than 70 ½ years old, you are allowed to give up to \$100,000 as a Qualified Charitable Distribution (QCD) from your traditional IRA or Roth IRA with no tax on the transaction. If you are required to make a Required Minimum Distribution (RMD) to yourself that is taxable, you may donate all or a portion of your RMD to Door County Land Trust as a QCD.

To qualify as a charitable donation, it is essential for a QCD to be made directly from your IRA to Door County Land Trust or any other receiving charity. Please consult your financial advisor for more information and to direct your Qualified Charitable Distribution. And, if you do choose to make a gift in this method to the Door County Land Trust, please contact us so we may thank you and correctly acknowledge your gift. (920)746-1359



## 2018 VOLUNTEERS

Alfred, Larry  
Allen, Ross  
Aten, Nancy  
Axelrod, Jon  
Axelrod, Susan  
Arduser, Bruce  
Barnard, Francha  
Barnes, David  
Barrett, Jean  
Beerntsen, Penny  
Bender, Allison  
Bennett, Nancy  
Bennett, Tom  
Benson, Don  
Berger, Mike  
Bicoy, Nalani  
Blackwood, Tom  
Blahnik, Judith  
Blahnik, Mary Ann  
Blanchard, Pam  
Blankenburg, Kathleen  
Blankenburg, Ralph  
Brevard, Mary  
Breving, Bob  
Brumder, Robo  
Burnham, Bonnie  
Burton, Rick  
Cochrane, Carl  
Collins, Dan  
Coulson, Andy  
Cubar, Susan  
D'Abbraccio, Deanna  
Davis, Rob  
DeNardo, Donna  
DeNardo, Tony  
Deschler, Peter  
Desotell, Larry  
Doerr, Bobbi  
Donegan, Sharon  
Eggert, Dan  
Erskine, Holly  
Erskine, Tim  
Feirer, Debbie  
Feirer, Russ  
Finger, Jack  
Fiorato, Cathy  
Fiorato, Tony  
Fitzgerald, Tim  
Fletcher, Bob  
Fitzgerald, Judy  
Fletcher, Suzanne  
Fortin, Guy

Foss, Kirby  
Frank, Barbara  
Frey, Barb  
Frey, Fred  
Friedberg, Gerri  
Gebauer, Tony  
Germain, Chuck  
Georgenson, Tracy  
Gilster, Tad  
Goodner, Dale  
Goodner, Mary  
Gordon, Rick  
Greene, Deb  
Greene, Tad  
Grelck, Carol  
Hagman-Shannon, Deb  
Haig, Barb  
Haig, Laurie(Nari)  
Hake, Donna  
Hanney, Rick  
Hanney, Roxanne  
Hanson, Bonnie  
Hanson, John  
Hansotia, Marilyn  
Hartman, Mary  
Hawley, Bob  
Hein, Marilyn  
Henriksen, Will  
Hermann, John  
Holey, Mark  
Holm, Randall  
Hubbard, Denise  
Hubbard, Kenneth  
Huber, Mark  
Hubing, Dan  
Hunt, Mark  
Hunt, Sue  
Jacobs, Gail  
Jordan, Tom  
Judd, Robert  
Keen, Dave  
Klimaitis, Ron  
Klug, Lucy  
Knox, Julie  
Kokes, Jeannie  
Kriha, Darcy  
Kriha, Rob  
Krumenacher, Jamie  
Kuhns, Roger  
Lauter, Charles  
Lauter, Estella  
Lester, Jim

Lisle, Bev  
Lisle, Tom  
Liss, Paul  
Livengood, Susan  
Lokken, Judy  
Lokken, Ron  
Lueking, Joel  
Lukes, Charlotte  
Mabbott, Tom  
Mahlberg, Paul  
Maloney, Laura  
Maloney, Ron  
Martin, Mark  
McCutcheon, Windsor  
Miller, Diane  
Miller, Sandy  
Minahan, Claire  
Minahan, Thomas  
Morgan, Barbara  
Movall, Ed  
Mullaney, Gail  
Mutchler, Keith  
Myers, Christa  
Naseem, Reza  
Nelson, Bruce  
Nelson, Bryan  
Nielsen, Laura Beck  
Olson, Chris  
Ottum, Barb  
Ottum, Jeff  
Pasquesi, Lou  
Perkins, Judy  
Perry, Jim  
Peters, Glenna  
Peters, Stefan  
Petersen, Sandy  
Petrie, Lucia  
Picken, Judy  
Purinton, Hoyt  
Radtke, Al  
Rintelman, Jim  
Rintelman, Mary Jane  
Rock, Samantha  
Roseman, Jeff  
Rossman, Glen  
Rossman, Grace  
Samida, Judy  
Wilkie Samson, Krista  
Samson, Lydia

Sauve, Bill  
Schley, Dan  
Schmelzer, Gretchen  
Seefeldt, Andy  
Seefeldt, Jillaine  
Seiler, Terrie  
Serrahn, Janet  
Shadle, Neil  
Sherwood, Debra  
Shields, Walt  
Shiels, Joan  
Siebel, Barbara  
Smythe, Dick  
Squier, Robin  
Stewart, Ruth  
Sterrenberg, Paul  
Stillman, Karen  
Stillman, Ken  
Stone, Tim  
Swanson, Gerry  
Swanson, John  
Taylor, Joe  
Thilly, Mary  
Thilly, Roy  
Troutman, Bryan  
Utey, Bill  
Van Gemert, Rob  
Walsh, Melody  
Watson, Rob  
Weber, Chuck  
Weber, Sigrid  
Wehling, John  
Whitney, Jane  
Wick, Cindy  
Wick, Tim  
Widen, Arnold  
Wilcox, Jock  
Wilcox, Karen  
Wilner, Dorry  
Wilson, John  
Wolff, Kathy  
Wolter, Cindy  
Wolter, Rich  
Yancey, John  
Yancey, Karen  
Youngsteadt, Duane  
Youngsteadt, Leslie  
Zuhlke, Dave

*Thank you!*

*Your volunteer service deserves to be acknowledged. If we have made an error or omitted your name, please notify us so we may correct it for future publications.*

## DEDICATED TO DISCOVERY MARILYN HANSOTIA

*Door County Land Trust volunteers bring a breadth of experience, knowledge and creativity. Throughout the history of the Land Trust, volunteers have been integral in the research and discovery leading to a deeper understanding of Door County's protected lands. In our 'Year of 'Discovery' we thank volunteer Marilyn Hansotia, who is a hike leader, citizen scientist, and mentor for fellow volunteers.*

A Land Trust member for twenty-three years (and counting), a hike leader, and a Master Naturalist, Marilyn Hansotia can most often be found out in the field researching and exploring natural areas. After completing her Master Naturalist course, Marilyn connected with citizen scientist programs. About a decade ago, she formed a team and began monitoring the frog and toad populations at ten Door County sites per year. Shortly thereafter, her research expanded to include stream quality monitoring.

"Perhaps the most dramatic experience has been monitoring the bat population at the Three Springs barn," says Marilyn. Marilyn's team was on the forefront of reporting white-nose-syndrome in bats when it was first documented in Door County in 2014. Her team continued monitoring during the decline that followed. Now, they are witnessing the bats' steady recovery. She also partnered with DNR bat biologists to identify the largest known surviving colony of little brown bats (*Myotis lucifugus*) in the state – over 800 – on Plum Island.

Marilyn is passionate about citizen monitoring because it allows her continued curiosity to grow. She says, "Understanding how species adapt to changing circumstances is fascinating and humbling!" Marilyn's work is a testament to the idea that being outdoors sparks curiosity about the natural world and the interdependent nature of all creatures. She is committed to the idea that preserving habitat is the critical element for survival. Door County Land Trust thanks Marilyn for her commitment to discovery and for sharing her passion for nature with fellow leaders and hikers. Thank you, Marilyn!



*Marilyn Hansotia (center) and fellow hike leaders share information during a peer-to-peer training hike held at Bay Shore Blufflands Nature Preserve.*



Let your land ethic live on...  
forever.

You believe in the power of nature.  
So do we.

We need your help to protect  
healthy lands and waters forever.  
Your gift will honor your land ethic  
and inspire the next generation.

Make a gift through your will, trust,  
retirement accounts, or life insurance



#### The Legacy Circle

When you inform the Door County Land Trust of your intent to make a planned gift, you will be welcomed into the Legacy Circle, a group of benefactors who have indicated that the Land Trust has been included in their estate plans.

For more information, contact Development Director Cinnamon Rossman or Executive Director Tom Clay at [giving@doorcountylandtrust.org](mailto:giving@doorcountylandtrust.org) or (920)746-1359.

[DoorCountyLandTrust.org/PlannedGiving](http://DoorCountyLandTrust.org/PlannedGiving)

Join us in thanking our Business Members!



Blue Dolphin House

Brown County Graphics

Dave's Tree Services, Inc

Door County Eye Associates

Door County Ice Cream Factory

Door Landscape & Nursery

Eagle Harbor Inn

EcoDoor, LLC

Ecology

The Garden Lady

Gills Rock Stoneware

Grasse's Grille

Pinkert Law Firm, LLP

RentShadowLawn.com

Ross Estate Planning

Sunnypoint Landscape

Terra Cottages

Dr Timothy Tishler DDS

True North Real Estate

Washington Island Ferry Line

To learn more about business and corporate giving, please contact Development Director Cinnamon Rossman at (920) 746-1359 or [giving@doorcountylandtrust.org](mailto:giving@doorcountylandtrust.org).





# Door County Land Trust

*Protecting Door County's Exceptional Lands and Waters...Forever*

(920) 746-1359 • [www.DoorCountyLandTrust.org](http://www.DoorCountyLandTrust.org)

PO Box 65, Sturgeon Bay, WI 54235



- Sound Finances
- Ethical Conduct
- Responsible Governance
- Lasting Stewardship



Following our Trails?

Follow us on Facebook & Instagram!

Find links at [DoorCountyLandTrust.org](http://DoorCountyLandTrust.org)

# Door Peninsula Coastal Wetlands



# BIOBLITZ

[DoorCountyLandTrust.org/BioBlitz](http://DoorCountyLandTrust.org/BioBlitz)

## June 21, 2019— Science all day! *Three Springs Nature Preserve*

Become a citizen scientist for a day! Discover and document the variety of species found at the Three Springs Nature Preserve—one of three sites in the 2019 BioBlitz!

Conservation partners from Door County Land Trust, UW-Green Bay Cofrin Center for Biodiversity, Friends of Toft Point, and The Ridges Sanctuary are working together to study the **Door Peninsula Coastal Wetlands**, lands designated by the *Ramsar Convention of Wetlands of International Importance*. One of only 38 sites in the US with this designation, more than 11,000 acres have been protected through the work of many conservation partners.

You can be a part of the fun—the science—and the research to better understand our place on this planet...A place like no other!

The **Door Peninsula Coastal Wetlands BioBlitz** is a partnership project brought to you by:

