



Door County Land Trust

Protecting Door County's Exceptional Lands and Waters...Forever

# Hiking Trail Map

## 13. Sturgeon Bay Ship Canal Nature Preserve

5340 Lake Lane & 5200 Lake Lane

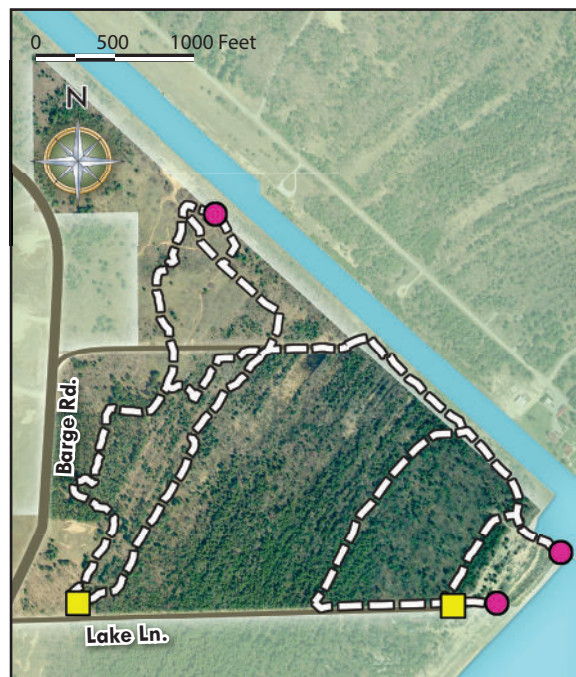
**Preserve Acres:** 445    **Miles of Hiking Trail:** 2.5

**Trail Rating:** Easy-to-moderate on rolling and often sandy terrain

**Trail and Preserve Features:** This trail system features a variety of habitats and landscapes including Lake Michigan beach, sand dunes, ancient ridge and swale shorelines, old-growth stands of hemlock and white pine, and open fields. The trail also provides outstanding views of the ship canal and two historic lighthouses.

### ***Along the Lake Michigan Flyway...***

Due to its proximity to Lake Michigan, the land here is an important site for rare and threatened bird species such as the bald eagle, Caspian tern and osprey. It's also one of the region's most critical resting spots for migrating neotropical birds. Walk quietly through the canopy and see if you can hear or see some of Door County's most unique visitors. From the shoreline, watch for Caspian and common terns diving into the waters to catch small fish. Stay off the sand dunes: this is prime habitat for the federally endangered Pitcher's dune thistle.



Door County Land Trust

PO Box 65 • Sturgeon Bay, WI 54235

920.746.1359

[www.DoorCountyLandTrust.org](http://www.DoorCountyLandTrust.org)