



Door County Land Trust

Protecting Door County's Exceptional Lands and Waters...Forever

# Hiking Trail Map

## 6. Ephraim Nature Preserve at Anderson Pond 10118 Moravia Street

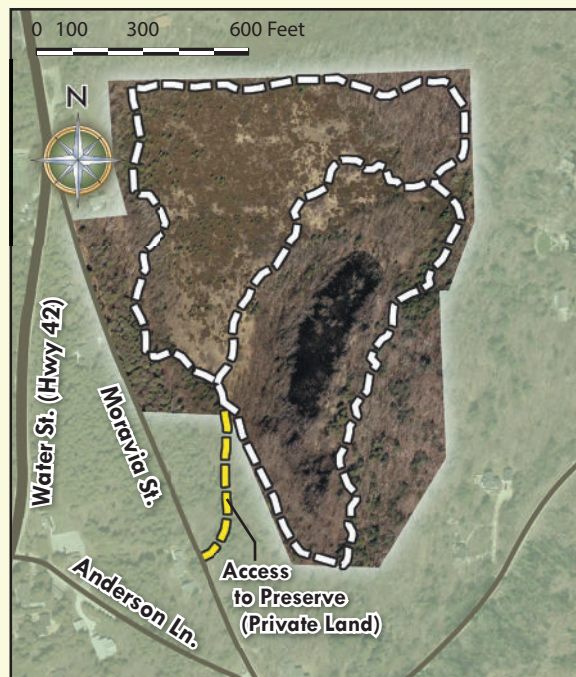
Preserve Acres: 26      Miles of Hiking Trail: 1.0

**Trail Rating:** Easy on even or rocky terrain

**Trail and Preserve Features:** Trail begins on top of an ancient cobblestone beach ridge on Moravia Street and descends into juniper fields and forest that surround the centerpiece of this preserve, Anderson Pond. The trail passes by remnants of the historic Anderson farmstead and also traverses the base of the Niagara Escarpment. The preserve is home to an impressive diversity of waterfowl and other bird species, particularly in springtime.

**Parking:** Please park only on the east side of Moravia Street. Additional parking may be found at public lots on Highway 42.

**Historic Home...** The land that this preserve protects has been in the Anderson family since 1858. Remnants of the historic farm that Aslag Anderson built that year can still be seen while hiking around the pond.



Door County Land Trust

PO Box 65 • Sturgeon Bay, WI 54235

920.746.1359

[www.DoorCountyLandTrust.org](http://www.DoorCountyLandTrust.org)