



Door County Land Trust

Protecting Door County's Exceptional Lands and Waters...Forever

# Hiking Trail Map

## 2. Domer-Neff Nature Preserve and Bird Sanctuary

1800 Townline Line Road, Washington Island

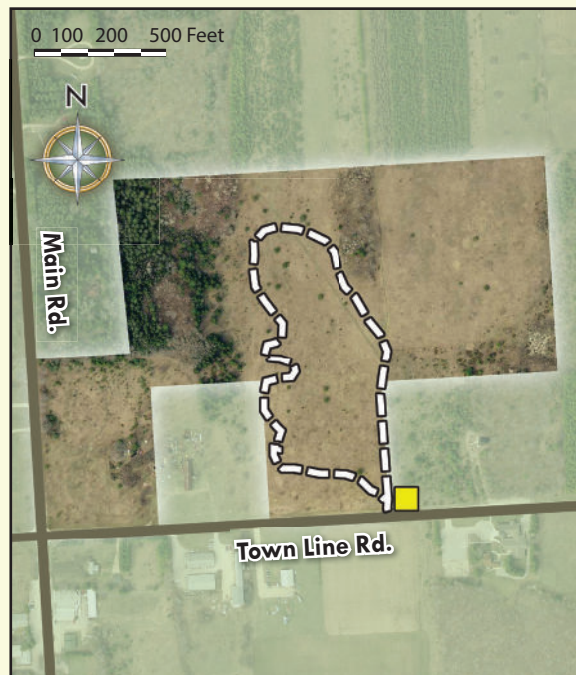
Preserve Acres: 43

Miles of Hiking Trail: 0.6

**Trail Rating:** Easy on level terrain

**Trail and Preserve Features:** Trail loop passes through fields filled with shrubs and small trees where visitors may encounter some of the 218 recorded species of birds found on Washington Island. Aviary visitors include Eastern kingbird, field sparrow, meadowlark and bluebird. Kestrels, Northern harriers and other birds of prey may be seen hunting in these open meadows. The trail connects to the meditation trail of a neighboring Scandinavian chapel, the Stavkirke.

**For the birds...** The open fields at Domer-Neff offer a perfect habitat for grassland loving birds. Ground-nesting birds and those that rely on open meadows are among the species most threatened by habitat loss. Bird conservationist Thomas Lovejoy says, "If you take care of birds, you take care of most of the environmental problems in the world."



Door County Land Trust

PO Box 65 • Sturgeon Bay, WI 54235

920.746.1359

[www.DoorCountyLandTrust.org](http://www.DoorCountyLandTrust.org)