

DCLT Official Hunting Map:

Sturgeon Bay
Ship Canal
Nature Preserve

Property Address

5340 Lake Lane
5200 Lake Lane

Map Legend

■ Parking Lot

Trail Type

— Rustic Hiking Trail

Hunting Status

Deer bow, Deer gun,
fall Turkey bow, spring
Turkey bow and gun

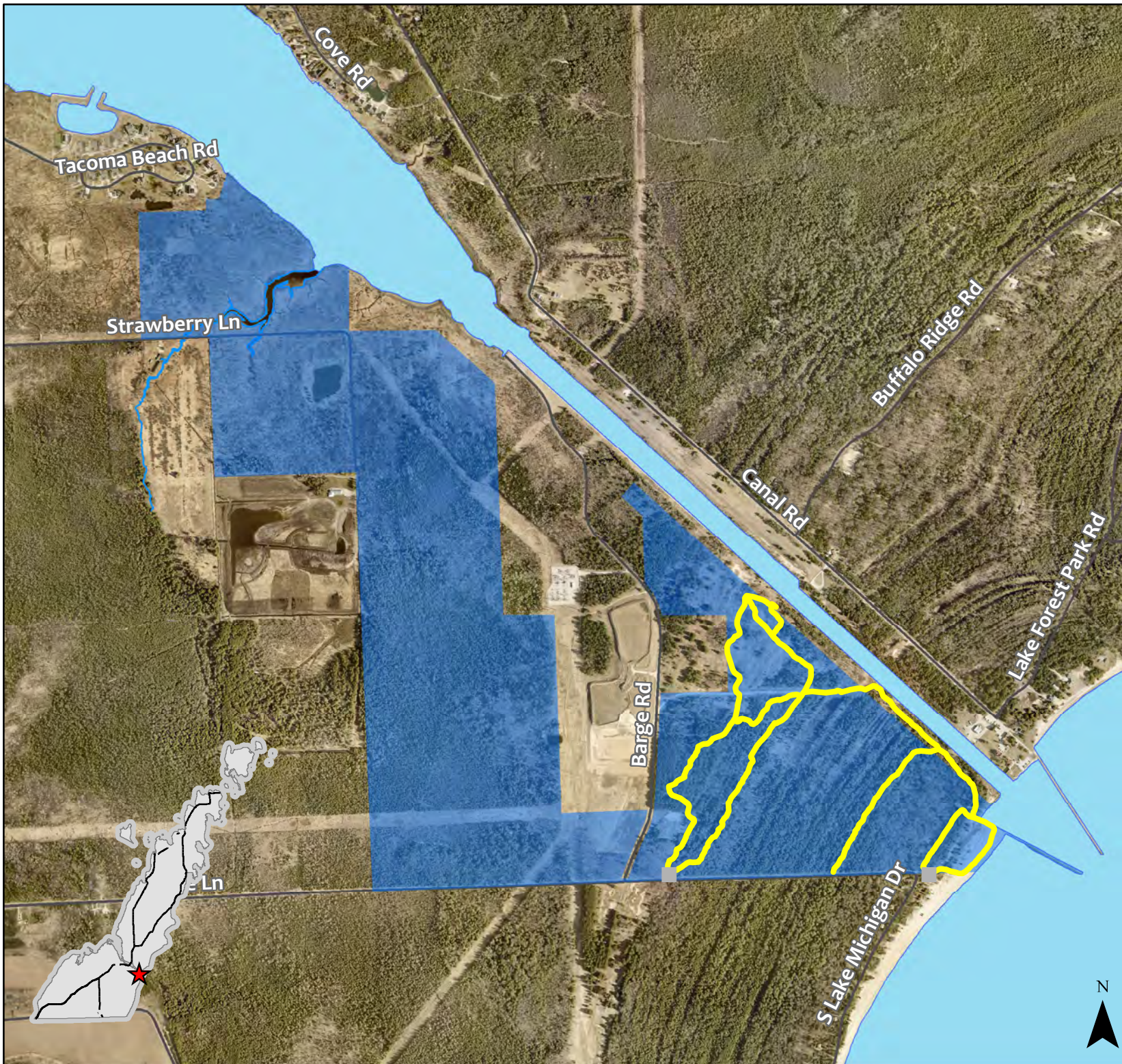
■ (Gun hunting limited to
shotgun and
muzzledloader. Rifles
are not allowed)

1. Special rules apply due to City of Sturgeon Bay ordinances
2. Gun hunters must show hunter safety permit to Sturgeon Bay Police Department
3. Bow hunters must shoot from a tree stand & stands must be removed each night
4. Gun hunting is limited to shotgun and muzzledloader. Rifles are not allowed.

For more Hunting information pertaining to Door County Land Trust Properties visit our website:

<https://www.doorcountylantrust.org/how-we-save-land/hunting-program/>

0 800 1,600 Feet



Rules for Hunting at Door County Land Trust Preserves

(Updated February 2018)

- Prior to the hunt, hunters are requested to contact the Land Trust by completing the Hunter Information Form on our website (www.doorcountylandtrust.org/how-we-save-land/hunting-program)
- Use of Door County Land Trust Preserves is a privilege extended to all legally-permitted hunters who abide by the rules and regulations of the WI-DNR and the Door County Land Trust. Failure to do so may result in loss of hunting privilege and if warranted, referral to the WI-DNR and/or Door County Sheriff for possible enforcement action.
- Portable hunting stands and structures (including trail cameras) are permitted for day use only and must be removed each night. All stands and structures must contain ownership information (name, address and phone number). If a stand or other structure is left overnight it will be dismantled and removed by staff or preserve stewards.
- The following activities are not allowed:
 - cutting trees or vegetation or removing brush from properties
 - baiting
 - motorized vehicles of any kind
- Hunters must respect adjacent private property. If a hunter needs to follow a wounded animal onto private lands, prior permission must be obtained from the landowner.
- Dogs actively engaged in hunting may be off leash, except that all dogs must be kept on leash from April 15 to July 31 to protect ground-nesting birds.
- Hunters are asked to help “keep an eye” on things when hunting and to inform the Land Trust if there are any activities taking place on the property of which we should be aware.

