



# Door County Land Trust Hiking Trail Map

## 10. Lautenbach Woods Nature Preserve 6749 County G

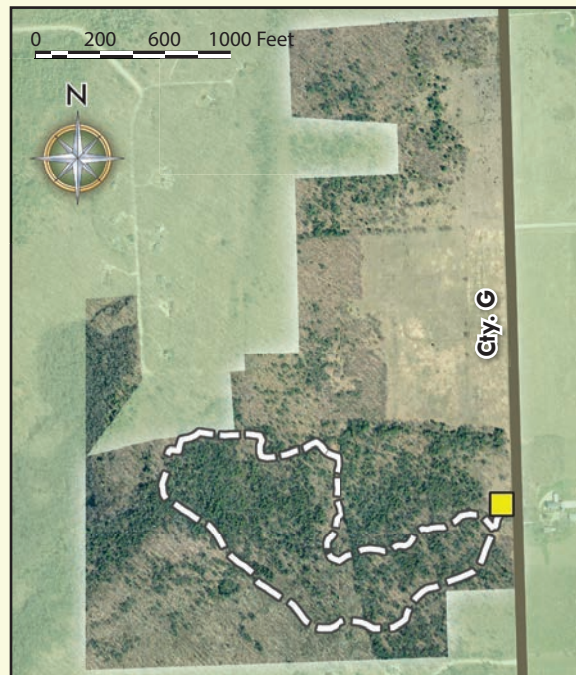
**Preserve Acres:** 160      **Miles of Hiking Trail:** 1.25

**Trail Rating:** Easy-to-moderate with incline along bluff slope

**Trail and Preserve Features:** Loop trail passes through a northern hardwood forest of beech, maple and ash and eventually descends the rocky slope of the Niagara Escarpment. The trail then traverses the escarpment, dominated by conifers, and passes an impressive stand of hemlock trees before gradually ascending back through the hardwood forest. A wonderful variety of wildflowers carpet the forest floor in springtime. This preserve is home to many songbirds and visitors may also encounter raptors, such as the northern goshawk.

### ***Where Glacial Relics Survive...***

The Lautenbach Woods Preserve is situated on and below the Niagara Escarpment. From the trail, you'll see fractures in the dolomite rock that underlies much of Door County. This crumbling rock provides habitat for rare species, including terrestrial land snails that have survived here since glaciers covered the region 10,000 years ago.



**Door County Land Trust**  
PO Box 65 • Sturgeon Bay, WI 54235  
920.746.1359  
[www.DoorCountyLandTrust.org](http://www.DoorCountyLandTrust.org)