



Door County Land Trust Hiking Trail Map

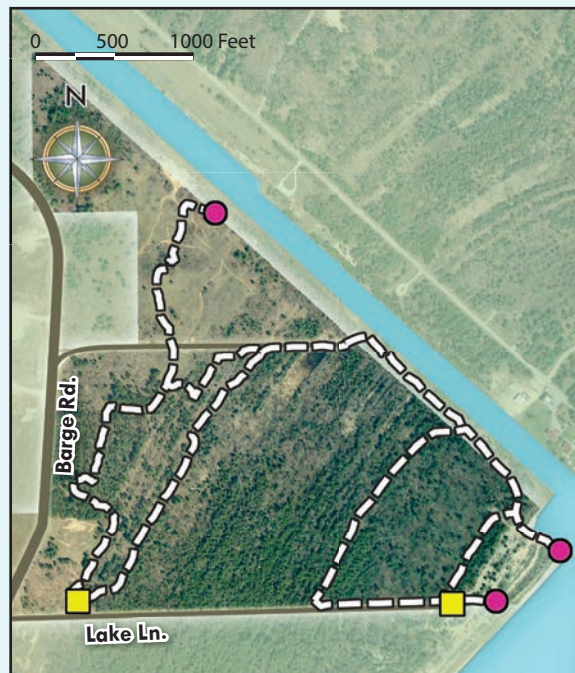
13. Sturgeon Bay Ship Canal Nature Preserve 5340 Lake Lane & 5200 Lake Lane

Preserve Acres: 445 **Miles of Hiking Trail:** 2.5

Trail Rating: Easy-to-moderate on rolling and often sandy terrain

Trail and Preserve Features: This trail system features a variety of habitats and landscapes including Lake Michigan beach, sand dunes, ancient ridge and swale shorelines, old-growth stands of hemlock and white pine, and open fields. The trail also provides outstanding views of the ship canal and two historic lighthouses.

Directions to the Preserve: From Highway 42/57 in Sturgeon Bay about 0.4 miles south of the Highway 42/57 (Bay View) Bridge, turn south onto County U (Clay Banks Road). Travel 2 miles and turn left onto Lake Lane. The first preserve parking area is 1.5 miles ahead on the left-hand side of the road at 5340 Lake Lane, just east of Barge Road. The second is located 0.5 miles farther east at 5200 Lake Lane where the road ends at the junction with South Lake Michigan Drive.



Door County Land Trust
PO Box 65 • Sturgeon Bay, WI 54235
920.746.1359
www.DoorCountyLandTrust.org