



# Door County Land Trust Hiking Trail Map

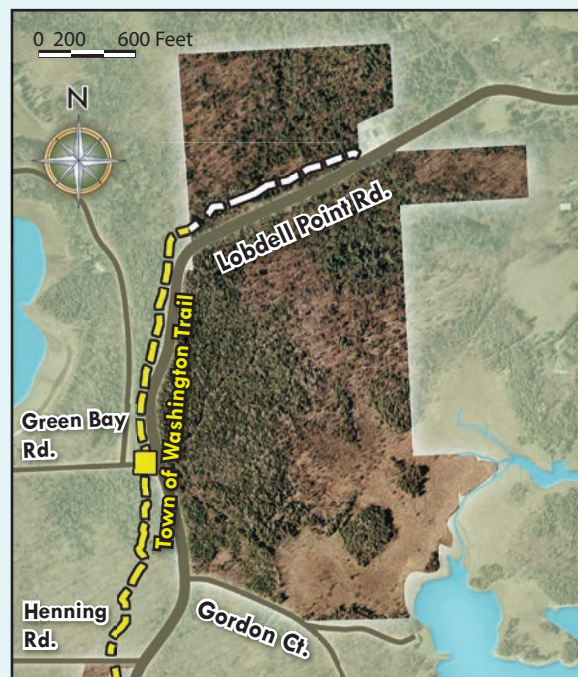
## 3. Detroit Harbor Nature Preserve Intersection of Lobdell Point Road and Green Bay Road, Washington Island

**Preserve Acres:** 148      **Miles of Hiking Trail:** 0.5

**Trail Rating:** Easy on level terrain

**Trail and Preserve Features:** The Town of Washington and Door County Land Trust are partnering on a new interconnected trail system that will connect the Land Trust's Richter Community Forest and Detroit Harbor Nature Preserves via a Town of Washington trail. Check trailhead signs for current information. The trail leads through an impressive ridge and swale habitat dominated by old growth hemlock, some of the largest yellow birch found in Door County, sugar maple and white cedar.

**Directions to the Preserve:** From the ferry dock, take Lobdell Point Road north 1 mile to the intersection of Green Bay Road. Turn left and park along the side of Green Bay Road. Take Town of Washington trail north to access Detroit Harbor Nature Preserve.



**Door County Land Trust**  
PO Box 65 • Sturgeon Bay, WI 54235  
920.746.1359  
[www.DoorCountyLandTrust.org](http://www.DoorCountyLandTrust.org)