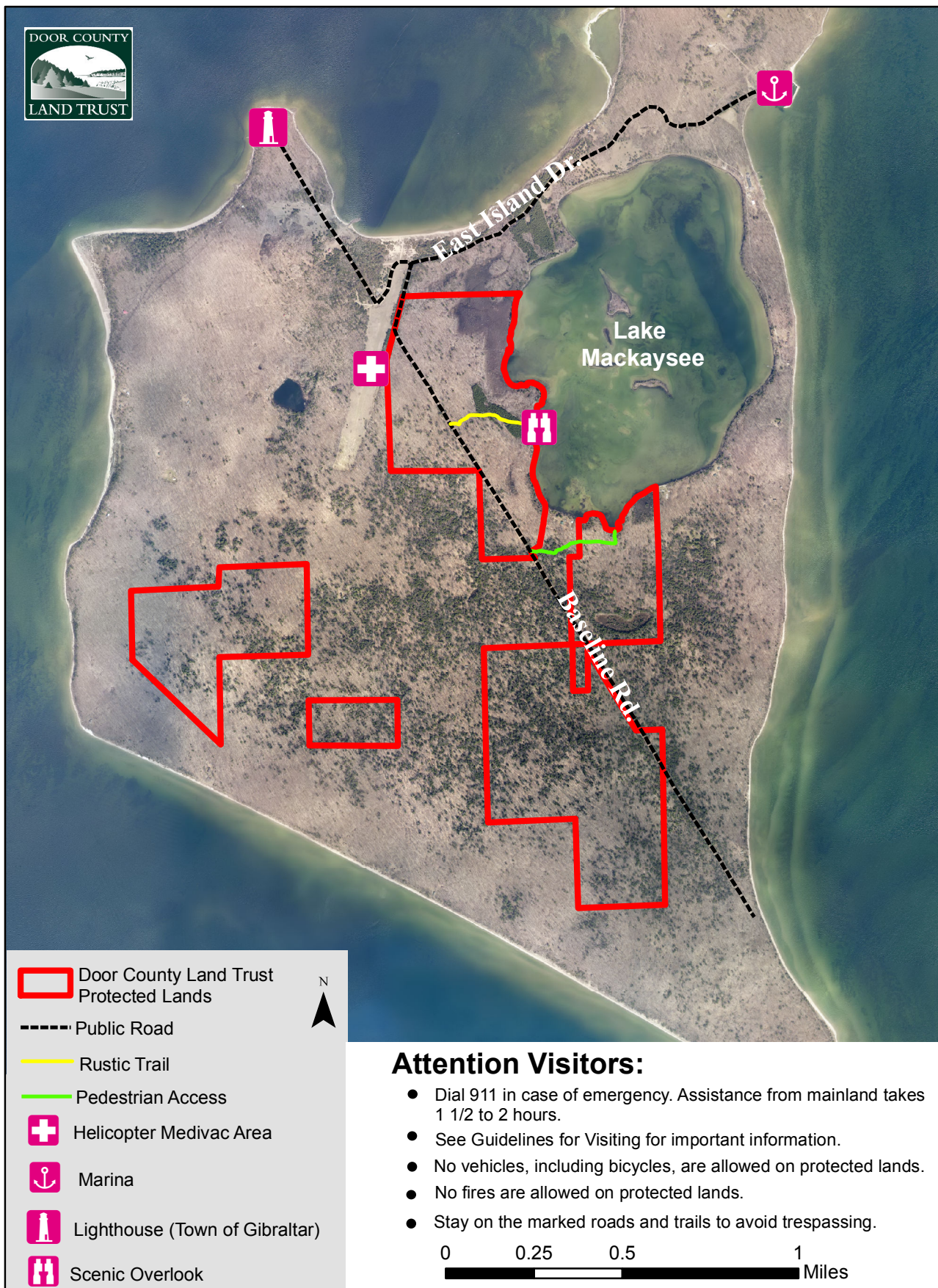


Door County Land Trust: Chambers Island Protected Lands as of 6/29/2017



Attention Visitors:

- Dial 911 in case of emergency. Assistance from mainland takes 1 1/2 to 2 hours.
- See Guidelines for Visiting for important information.
- No vehicles, including bicycles, are allowed on protected lands.
- No fires are allowed on protected lands.
- Stay on the marked roads and trails to avoid trespassing.

0 0.25 0.5 1
Miles



Guidelines for Visiting Door County Land Trust Protected Lands on Chambers Island

Door County Land Trust protected lands are managed to protect fragile ecological resources and provide habitat for plants and wildlife. For your safety and enjoyment, as well as the health of our forests, meadows and wetlands, we ask that you please observe the following rules when visiting Door County Land Trust protected lands:

- Door County Land Trust protected lands are for day use only.
- Stay on the trails.
- If you pack it in, pack it out.
- The following are not permitted: motorized vehicles of any type, bicycles, horses, camping, fires, geocaching or disturbance of natural materials.
- Dogs are allowed but must be kept on leash at all times. Dogs actively engaged in hunting may be off leash, except that all dogs must be kept on leash from April 15 to July 31 to protect ground-nesting birds.
- Visit www.doorcountylandtrust.org for information about hunting seasons and rules.
- Commercial use of preserves is prohibited.

Special Considerations for Visiting Chambers Island

There are no amenities on Chambers Island. This includes no ground transportation, no trash cans, no drinking water, no stores or restaurants, no public telephone, no emergency personnel, no Land Trust staff on-site, no temporary shelter in case of bad weather, etc. There are no restrooms on protected lands.

Be prepared in case of emergency. Bring a cell phone. In case of emergency, dial 911. Expect long delays before receiving assistance. Consider an alternate plan in case area phone reception is poor.

Do not trespass on private land or private roads. Review the *Chambers Island Protected Lands* map for the location of Door County Land Trust protected lands and the roads to access them. If it is not outlined in red on the map, assume it is privately owned.

Hike safely. Trails are minimally maintained. Be aware of hazards such as passing vehicles on public roads, poison ivy or ticks. Pay attention to the scale of the map and be prepared to walk long distances.

Other Chambers Island Information

The lighthouse. Managed by the Town of Gibraltar, the lighthouse grounds and restroom are open to visitors for day use during the summer. The lighthouse itself has limited hours and is generally open on weekends from Memorial Day to Labor Day. Please follow all posted rules.