

Door County Land Trust
White Cliff Fen & Forest Preserve



100 0 100 200 300 400 500 600 Feet



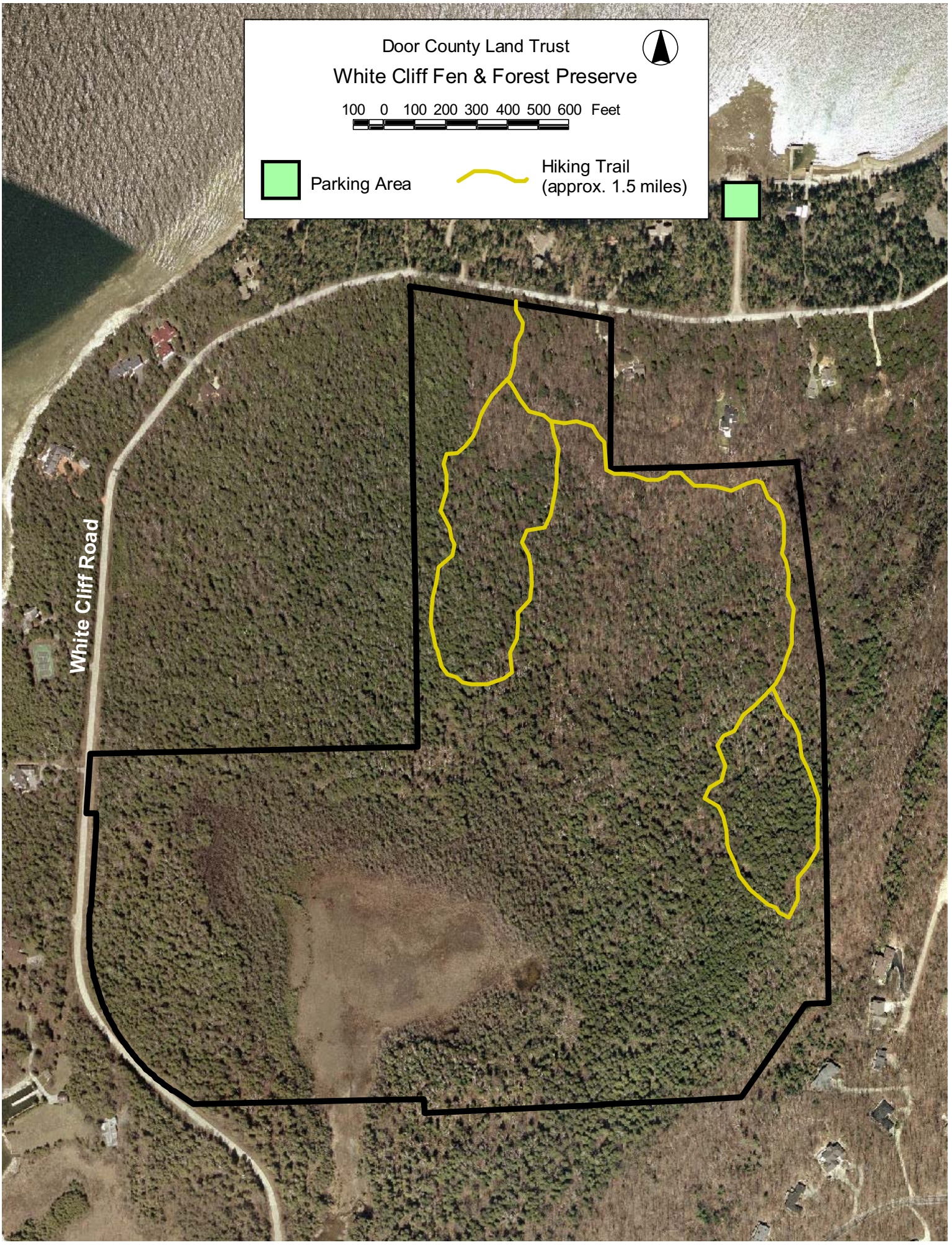
Parking Area



Hiking Trail
(approx. 1.5 miles)



White Cliff Road



Welcome to Door County Land Trust's White Cliff Fen & Forest Preserve

Directions: White Cliff Fen & Forest Preserve is located near the shores of Green Bay approximately 1 mile north of the village of Egg Harbor. The trailhead is on the south side of White Cliff Road between the intersections with Harbor Heights Road and Juddville Road. Parking is available at the public boat launch on White Cliff Road immediately east of the trailhead.

Preserve Guidelines

For the safety and enjoyment of our visitors as well as the health of our forests, meadows and wetlands, we ask that you please observe the following rules:

1. Please stay on the trails at all times. Pedestrians off-trail cause disturbance to vegetation and wildlife and may encounter poison ivy or other natural hazards. Also, portions of the trail are in close proximity to neighboring private lands.
2. Please use the boot brush station at the trailhead to clean your footwear before you begin your hike. By removing invasive plant seeds that cling to hikers' shoes, you can help us prevent the spread of invasive species which are one of the greatest threats to the native plant and animal communities on our preserves.
3. Dogs are welcome on the trails, but must be kept on a leash at all times.
4. Please take out everything you bring with you, including garbage.
5. For information on hunting rules and opportunities, please visit the Hunting Program section of our website at www.doorcountylandtrust.org.
6. Remember to wear blaze orange or brightly colored clothing during open bow hunting seasons when visiting one of our preserves where we allow hunting. We do not recommend hiking on Land Trust Preserves during hunting seasons that involve firearms and visiting preserves during this time is at your own risk.
7. Please stay within the preserve boundaries and do not trespass on neighboring private lands.

Prohibited Activities

The following activities are not permitted on Door County Land Trust Preserves:

- Use of vehicles, including bicycles, ATVs, snowmobiles, and aircraft
- Camping
- Cooking or camp fires
- Caving or rock climbing
- Horseback riding
- Geocaching
- Pets off-leash
- Collection or disturbance of any natural material, alive or dead. This includes fruits, nuts, other edible plant parts, animals, fungi, rocks, minerals, fossils, archaeological artifacts, soil, downed wood, wildflowers and other plants, etc.
- Collection for scientific research requires permission from the Door County Land Trust and the WI Department of Natural Resources.
- Use of firearms or other weapons, except where allowed for permissible hunting activities as described on our Hunting Program webpage.

Thank you for respecting these rules as you enjoy visiting Door County Land Trust Preserves. We appreciate your help in keeping these special places a safe and serene environment for visitors and wildlife alike!



*Door County Land Trust * PO Box 65 * Sturgeon Bay, WI 54235*
*Phone: (920)746-1359 * Email: info@doorcountylandtrust.org*